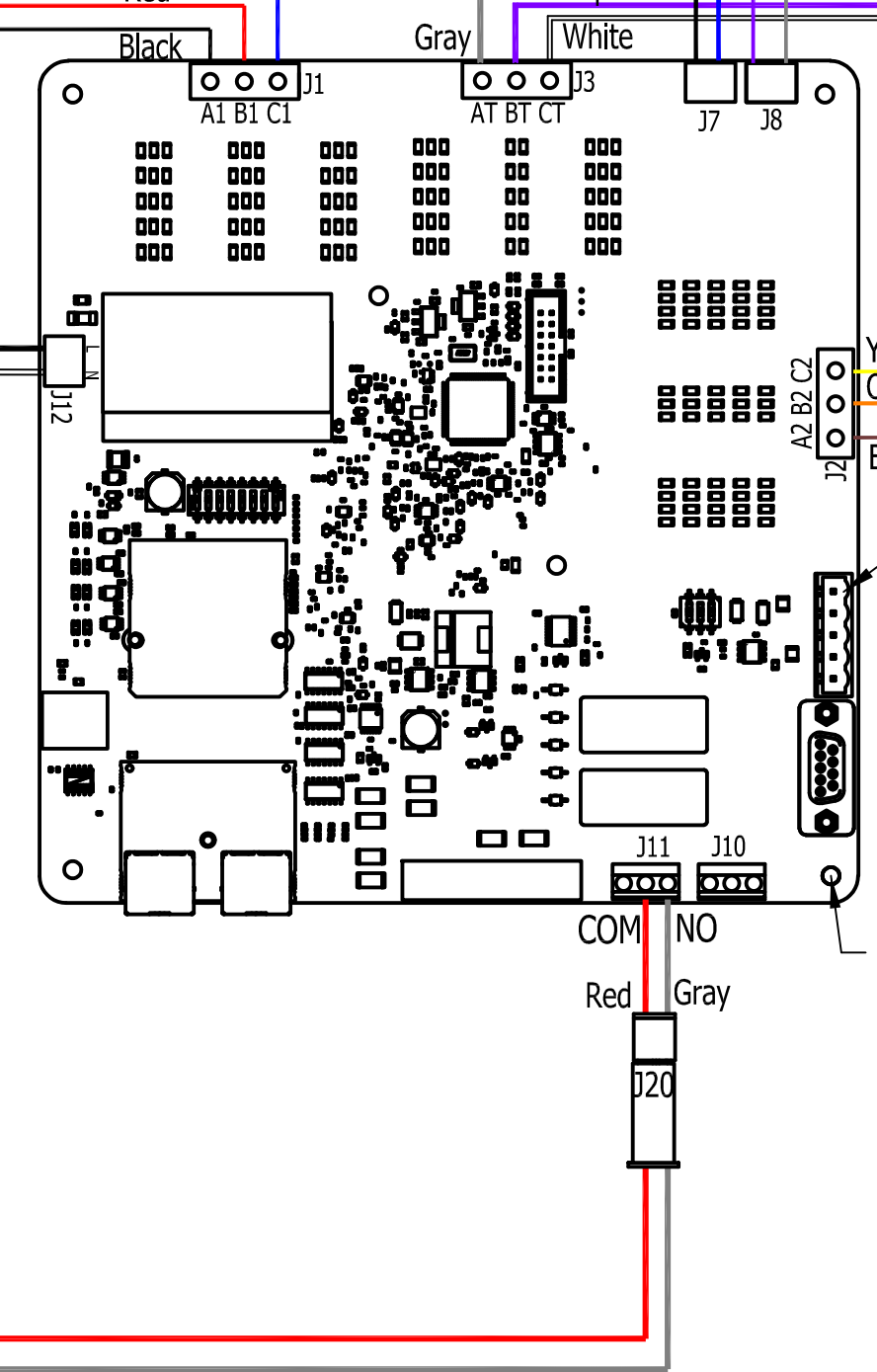
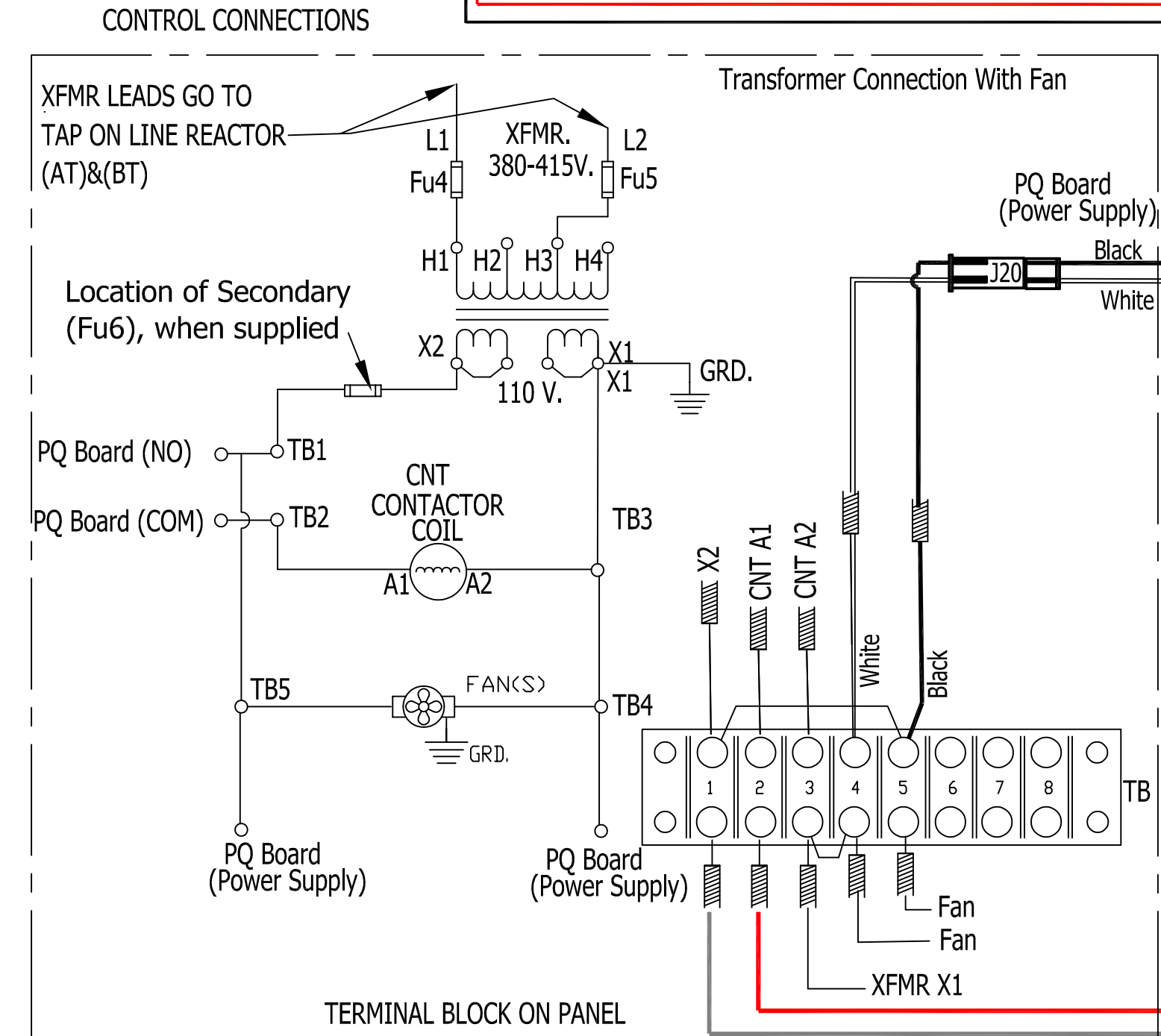
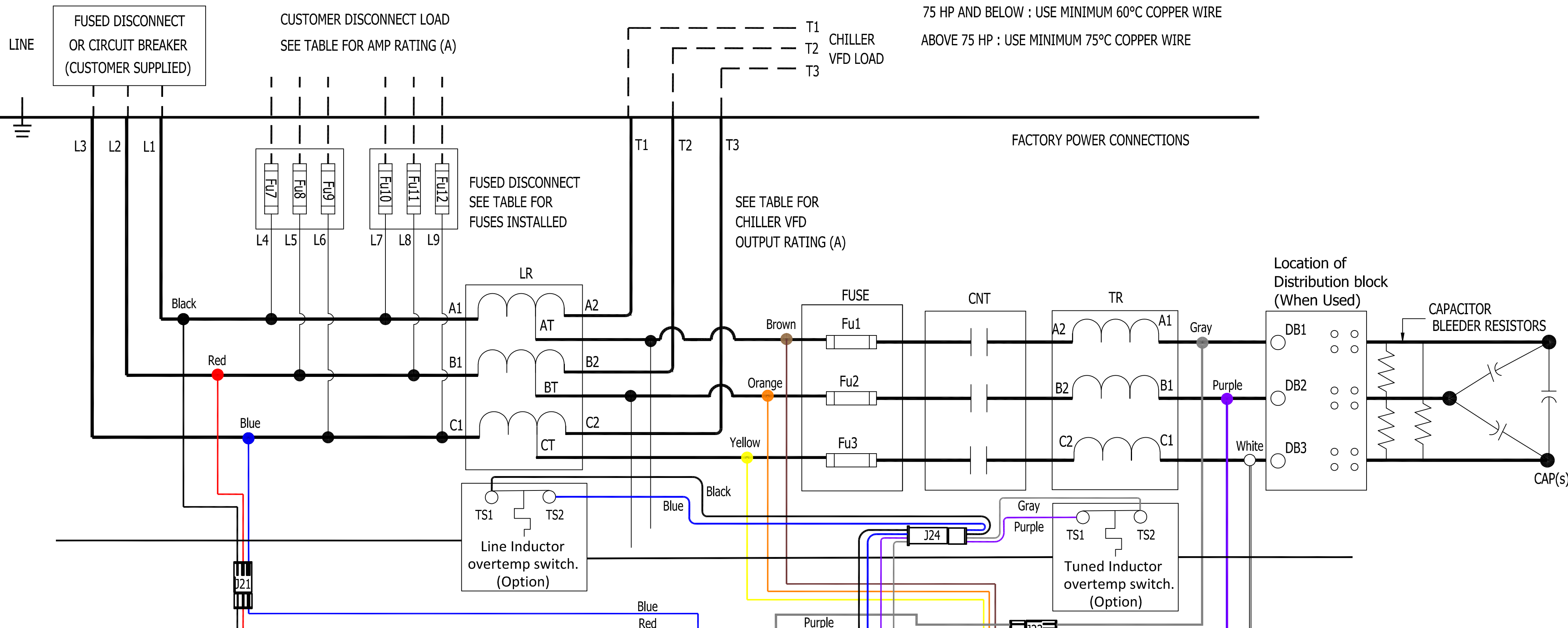


ALL CUSTOMER CONNECTIONS, 380-415V, 50hz

75 HP AND BELOW : USE MINIMUM 60°C COPPER WIRE

ABOVE 75 HP : USE MINIMUM 75°C COPPER WIRE



HGP/HGL Part Number	Panel Amp Rating (A)	Chiller VFD Amp Rating (A)	Fused Disconnect Switch Size Fu7, Fu8, Fu9	Fused Disconnect Switch Size Fu10, Fu11, Fu12	Installed Fuse Size Fu7, Fu8, Fu9	Installed Fuse Size Fu10, Fu11, Fu12	Customer Disconnect Amp Rating (A)
108792-02	850	710	100	100	70	70	70/70

DIMENSIONS IN INCHES (EXCEPT AS NOTED) TOLERANCES EXCEPT AS NOTED: DECIMAL .XX ± .01 FRACTIONAL ± 1/32 ANGULAR ± 1/2°	THE INFORMATION AND DESIGNS CONTAINED IN THIS DRAWING ARE CONFIDENTIAL AND THE PROPRIETARY PROPERTY OF ALLIANT INC. AND ITS SUBSIDIARIES. NEITHER THIS DESIGN NOR ANY INFORMATION CONTAINED IN THIS DRAWING MAY BE REPRODUCED OR DISCLOSED TO OTHERS WITHOUT THE EXPRESS WRITTEN CONSENT OF ALLIANT INC. AND ITS SUBSIDIARIES.	DRAWN BY: JRN DATE: 04/24/26		W132 N10611 Grant Drive Germantown, WI 53022 ©Alliant Inc. 2025
		HGP/HGL 380-415V Schematic 2 Unfiltered Fused Disconnect		
As Designed REVISION: NA	DATE: 04/24/26 BY: JRN	SCALE: NA	DWG. NO: 31462-LXL2	SHT. 1 OF 1