

CUSTOMER CONNECTIONS

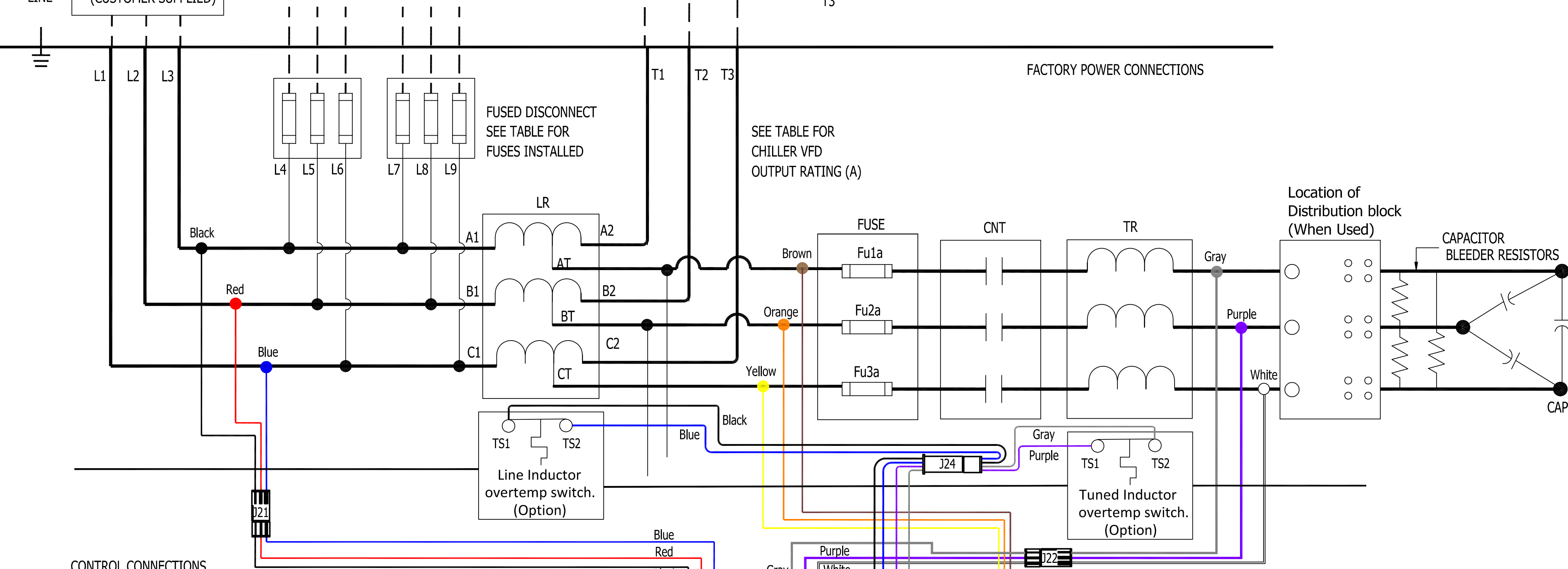
75 HP AND BELOW : USE MINIMUM 60°C COPPER WIRE
 ABOVE 75 HP : USE MINIMUM 75°C COPPER WIRE

480V.
 60 HZ.
 LINE

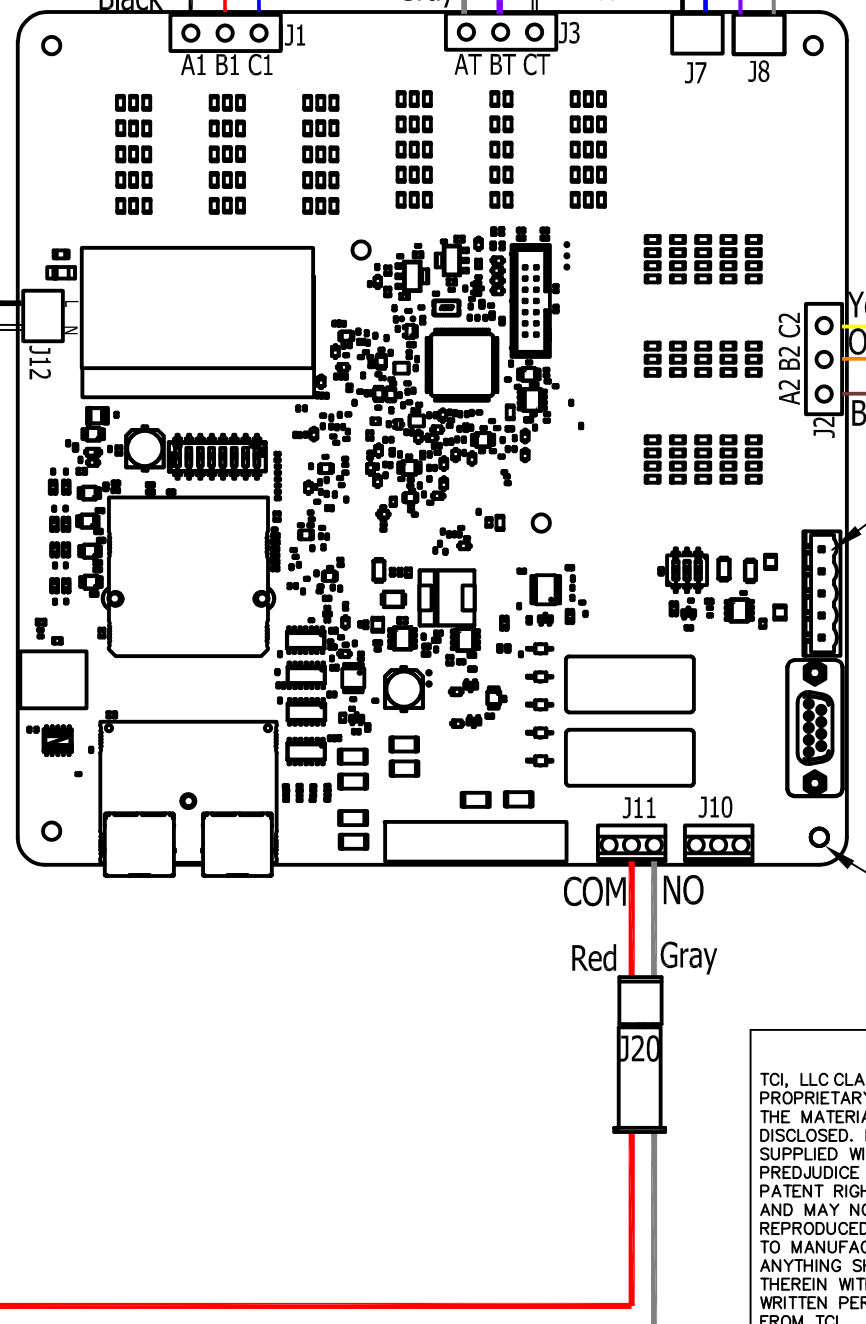
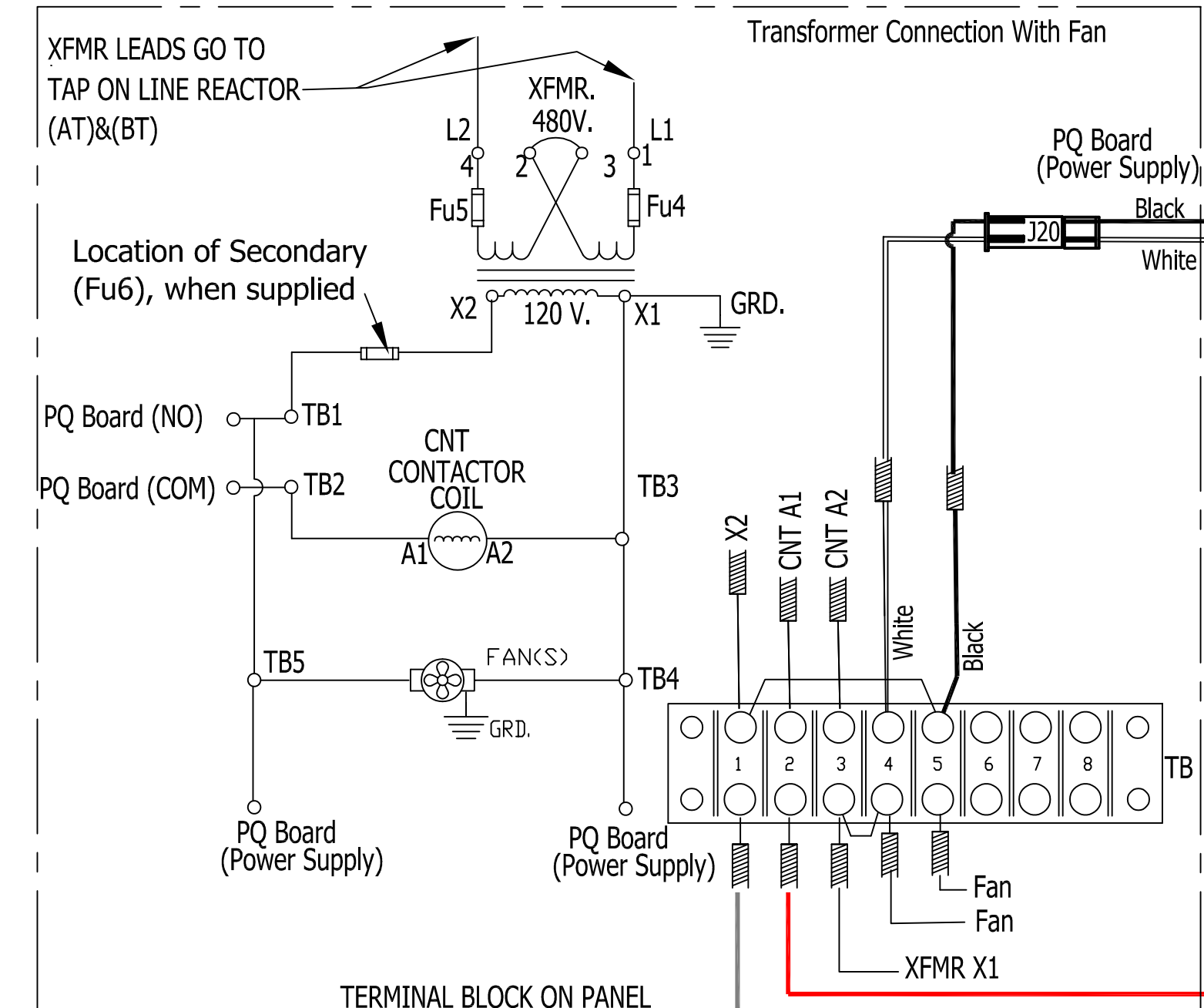
FUSED DISCONNECT
 OR CIRCUIT BREAKER
 (CUSTOMER SUPPLIED)

CUSTOMER LOAD

FACTORY POWER CONNECTIONS



CONTROL CONNECTIONS



HGP/HGL Part Number	Input Amp Rating (A)	Chiller VFD Output Amp Rating (A)	Fused Disconnect Switch Size L4, L5, L6	Fused Disconnect Switch Size L7, L8, L9	Installed Fuse Fuse Size L4, L5, L6	Installed Fuse Fuse Size L7, L8, L9
108196-03	670	590	60	60	40	40
108144-02	820	720	60	60	50	50

TOLERANCES (EXCEPT AS NOTED)
 DECIMAL
 .XX ± N/A
 .XXX ± N/A
 FRACTIONAL
 ± N/A
 ANGULAR
 ± N/A

TCI, LLC CLAIMS PROPRIETARY RIGHTS IN THE MATERIAL HEREIN DISCLOSED. IT IS SUPPLIED WITHOUT PREJUDICE TO ANY PATENT RIGHTS OF TCI AND MAY NOT BE REPRODUCED OR USED TO MANUFACTURE ANYTHING SHOWN THEREIN WITHOUT WRITTEN PERMISSION FROM TCI.

AS DESIGNED 11/13/23 JRN
 REVISION DATE BY

SCALE NONE SIZE

TOLERANCES (EXCEPT AS NOTED)
 DECIMAL
 .XX ± N/A
 .XXX ± N/A
 FRACTIONAL
 ± N/A
 ANGULAR
 ± N/A

TCI® W132 N10611 Grant Drive
 Germantown, WI 53022

HGP/HGL, 480V SCHEMATIC
 2 UNFILTERED FUSED DISCONNECTS

DRN BY JRN DATE 11/13/23 DWG. NO. 31462-L2
 SCALE NONE SIZE SHT. 1 OF 1