

CUSTOMER CONNECTIONS

75 HP AND BELOW : USE MINIMUM 60°C COPPER WIRE  
 ABOVE 75 HP : USE MINIMUM 75°C COPPER WIRE

480V.  
 60 HZ.  
 LINE

FUSED DISCONNECT  
 OR CIRCUIT BREAKER  
 (CUSTOMER SUPPLIED)

CUSTOMER LOAD

FACTORY POWER CONNECTIONS

Location of  
 Distribution block  
 (When Used)

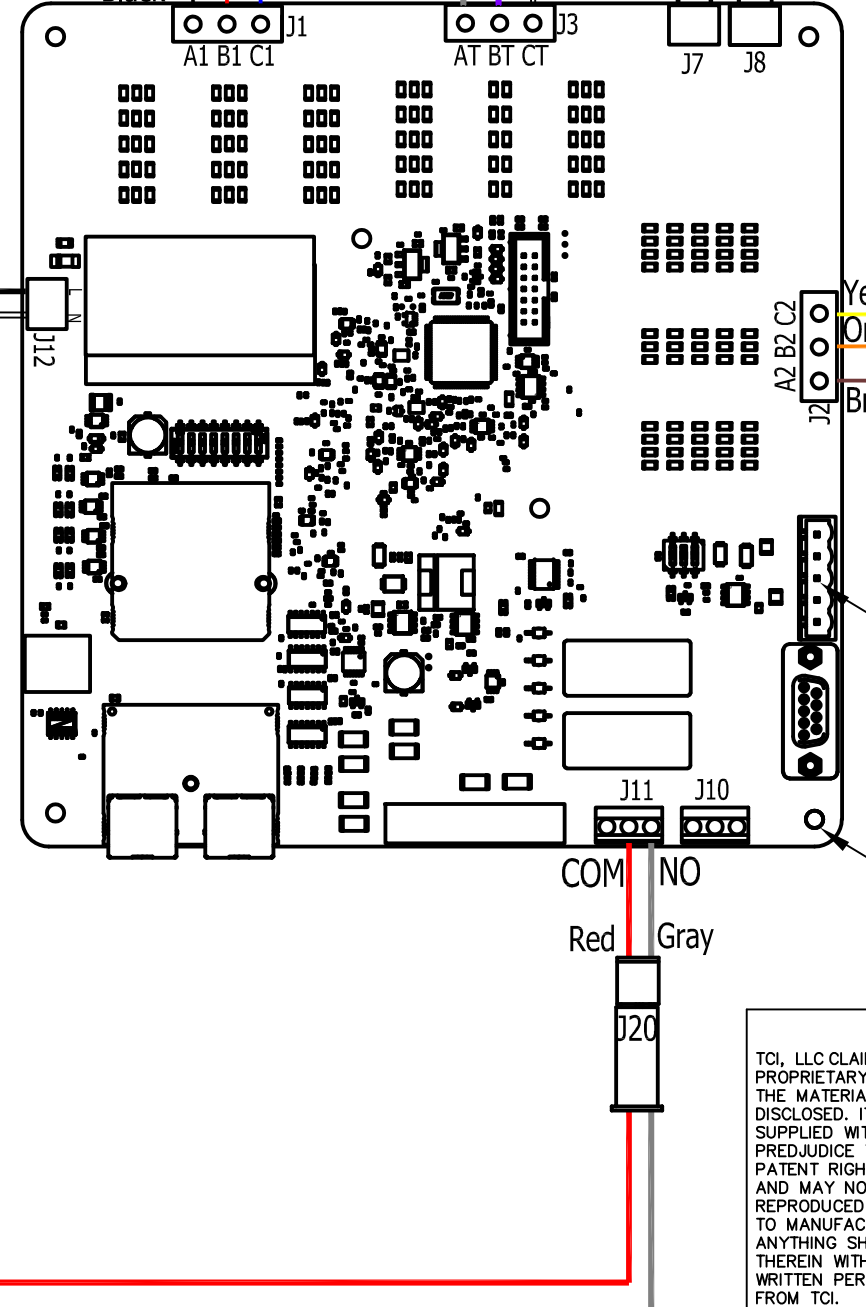
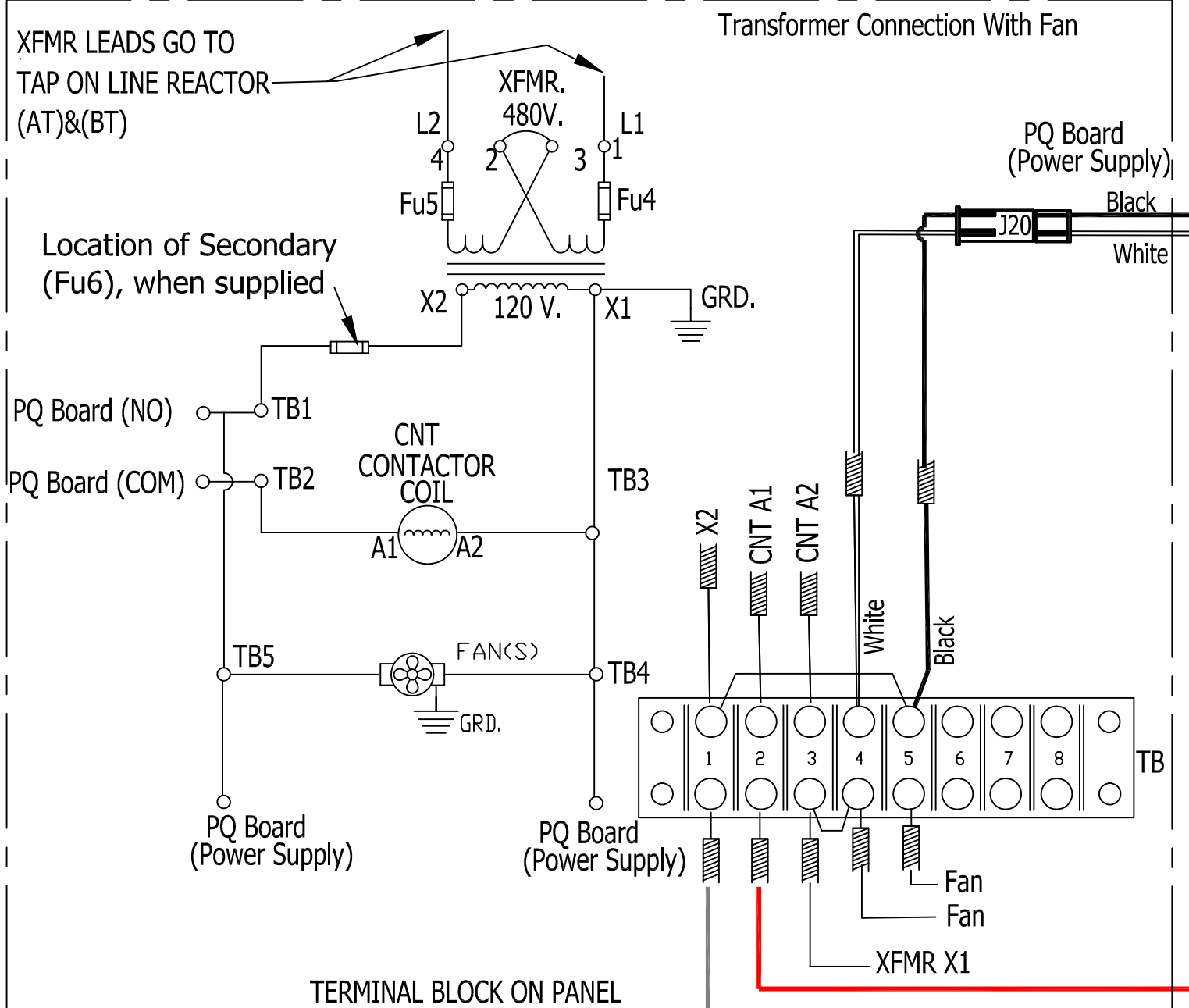
CAPACITOR  
 BLEEDER RESISTORS

CAP(s)

CONTROL CONNECTIONS

TS1 TS2  
 Line Inductor  
 overtemp switch.  
 (Option)

TS1 TS2  
 Tuned Inductor  
 overtemp switch.  
 (Option)



TCI, LLC CLAIMS  
 PROPRIETARY RIGHTS IN  
 THE MATERIAL HEREIN  
 DISCLOSED. IT IS  
 SUPPLIED WITHOUT  
 PREJUDICE TO ANY  
 PATENT RIGHTS OF TCI  
 AND MAY NOT BE  
 REPRODUCED OR USED  
 TO MANUFACTURE  
 ANYTHING SHOWN  
 THEREIN WITHOUT  
 WRITTEN PERMISSION  
 FROM TCI.

NO	REVISION	DATE	BY	TOLERANCES (EXCEPT AS NOTED)
AS DESIGNED		02/18/21	JRN	DECIMAL
				.XX ± N/A
				.XXX ± N/A
				FRACTIONAL ± N/A
				ANGULAR ± N/A

**TCI**® W132 N10611 Grant Drive  
 Germantown, WI 53022

**HARMONICGUARD PASSIVE**  
 480V SCHEMATIC

2X FUSED DISCONNECT, CONTACTOR CONTROL VERSION

DRN. BY	JRN	DATE	02/18/22	DWG. NO.	31462-50-50
SCALE	NONE	SIZE			

SHT. 1 of 1