

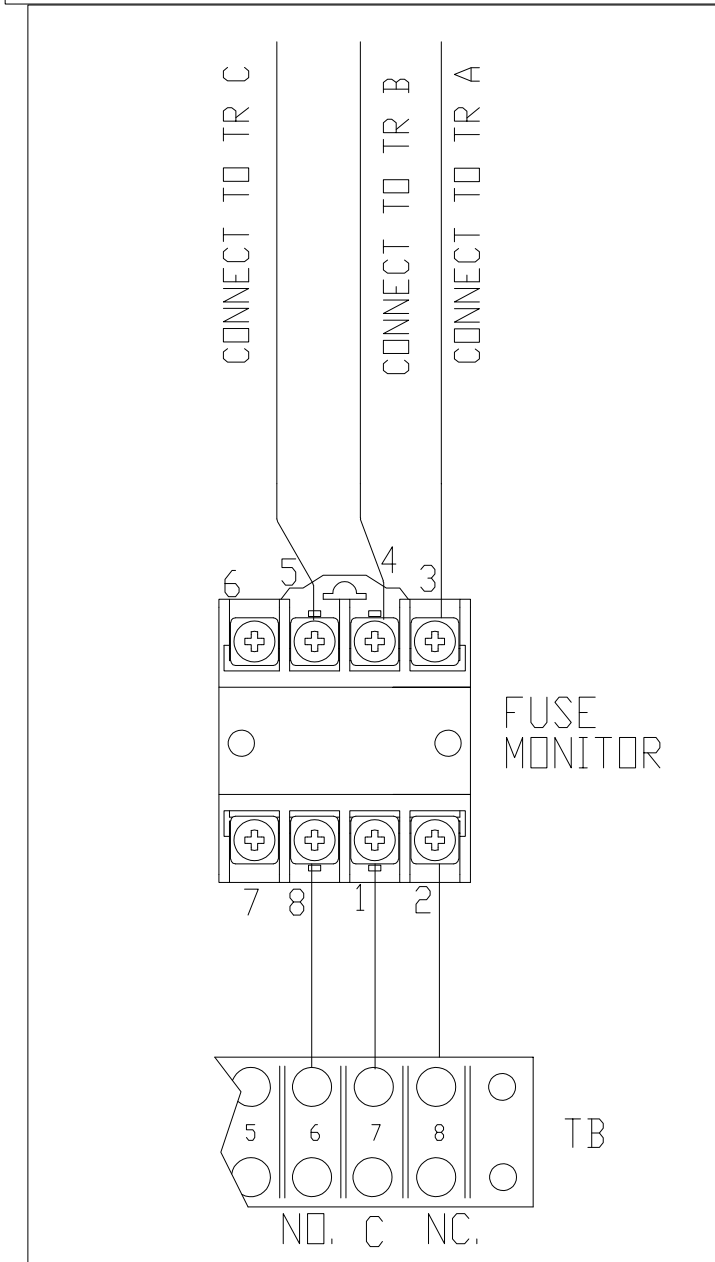
CUSTOMER CONNECTIONS

75 HP AND BELOW : USE MINIMUM 60°C COPPER WIRE  
ABOVE 75 HP : USE MINIMUM 75°C COPPER WIRE

FACTORY POWER CONNECTIONS

CONNECTIONS FOR FUSE MONITOR OPTION

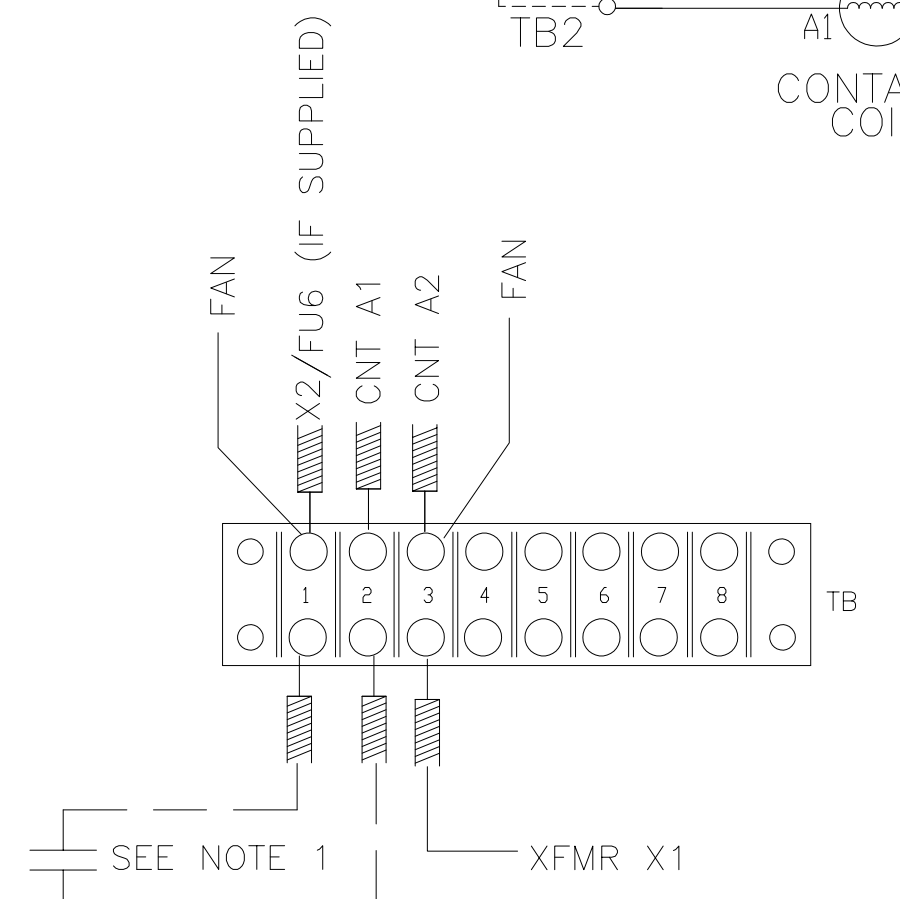
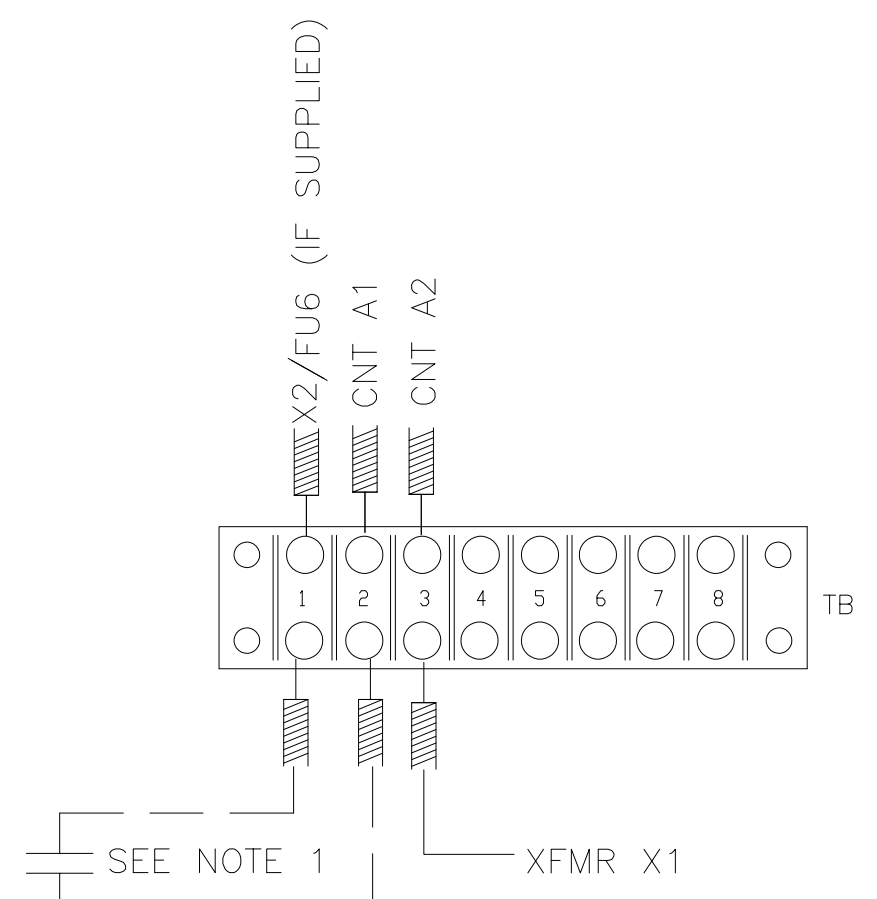
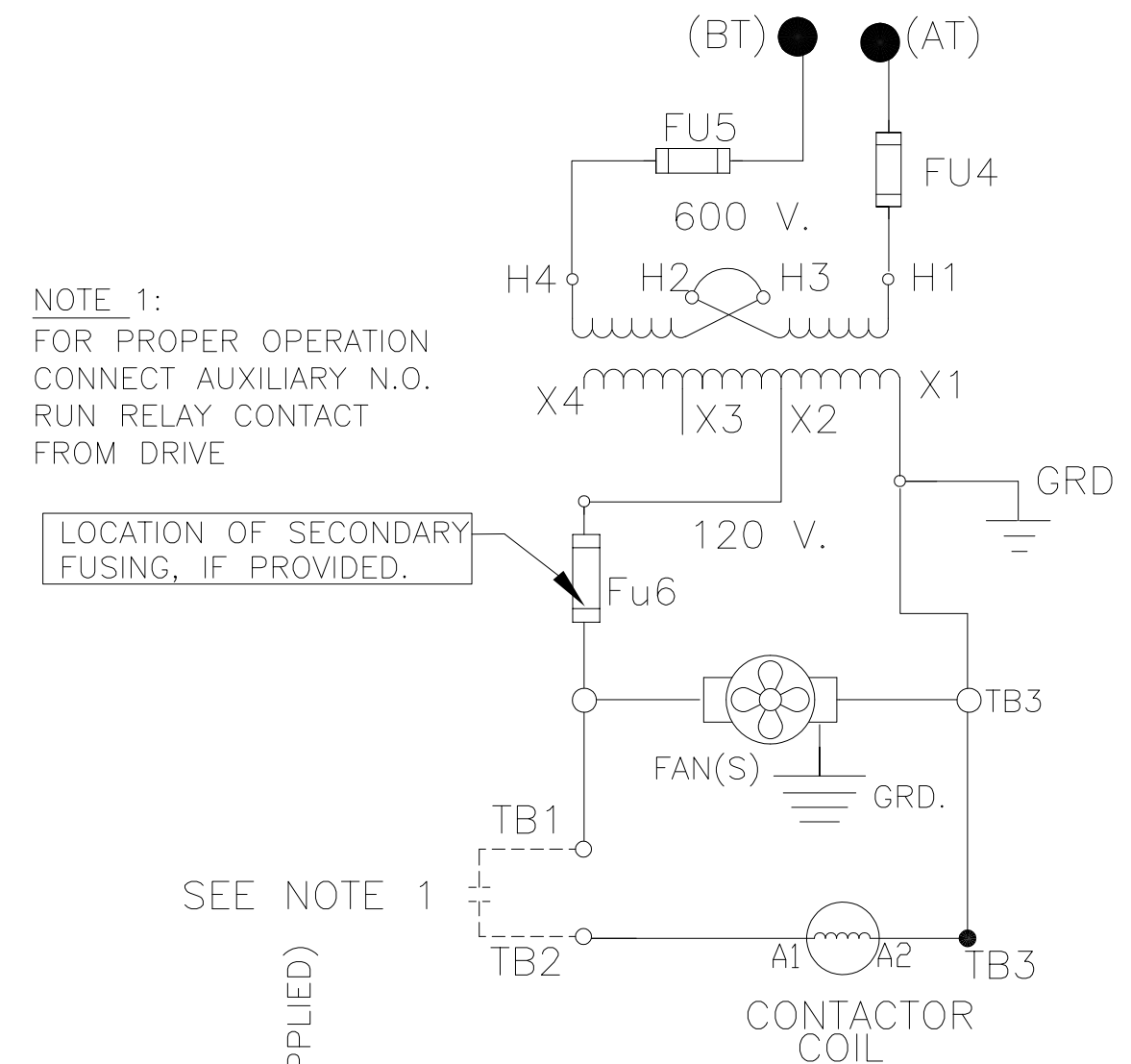
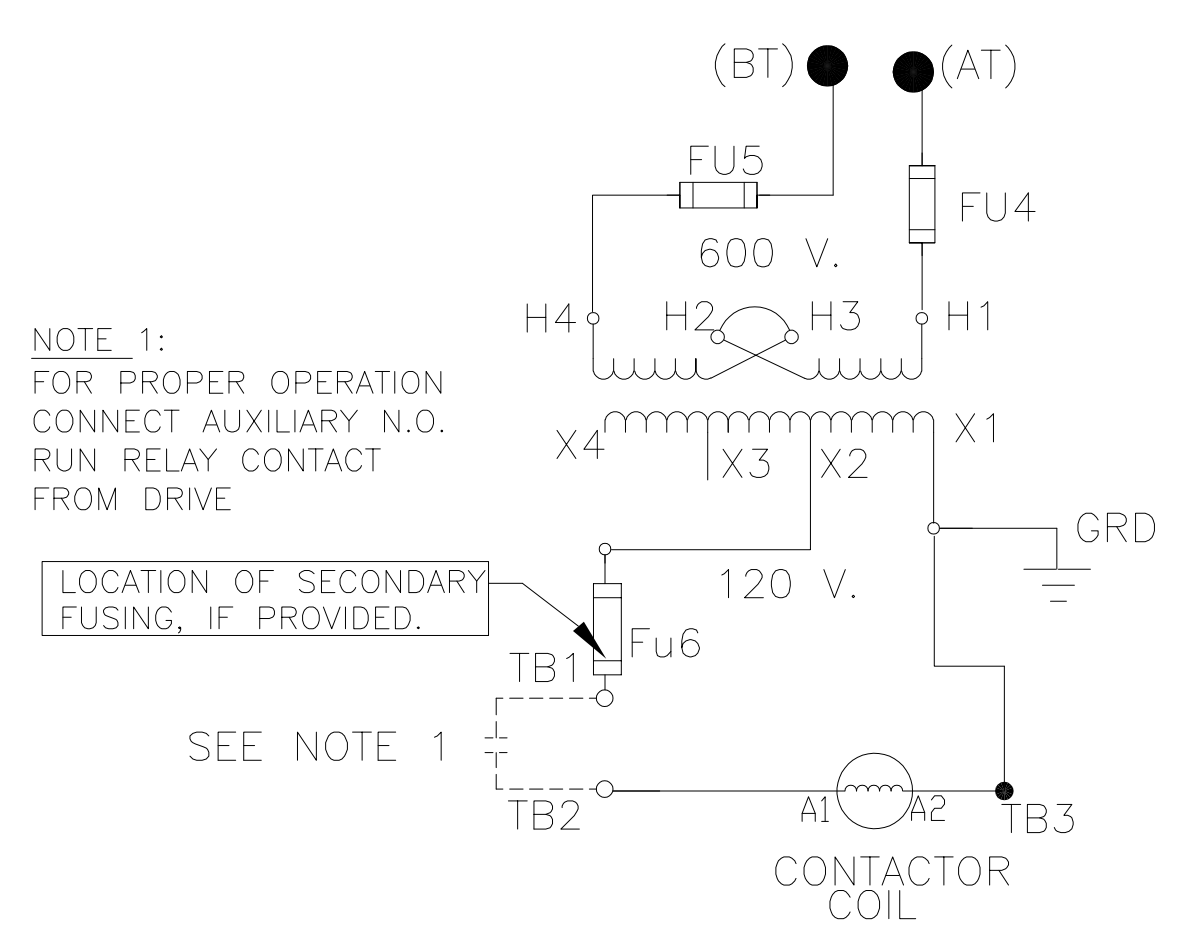
SCHMATIC FOR FUSE MONITOR, OPTION



TERMINAL BLOCK ON PANEL

CONTROL CONNECTIONS WITHOUT FAN(S)

CONTROL CONNECTIONS WITH FAN(S)



TCI, LLC CLAIMS PROPRIETARY RIGHTS IN THE MATERIAL HEREIN DISCLOSED. IT IS SUPPLIED WITHOUT PREJUDICE TO ANY PATENT RIGHTS OF TCI AND MAY NOT BE REPRODUCED OR USED TO MANUFACTURE ANYTHING SHOWN THEREIN WITHOUT WRITTEN PERMISSION FROM TCI.

NO	REVISION	DATE	BY

TOLERANCES (EXCEPT AS NOTED):  
DECIMAL  
.XX ± NA  
.XXX ± NA  
FRACTIONAL  
± NA  
ANGULAR  
± NA

**TCI** W132 N10611 GRANT DRIVE  
GERMANTOWN, WI 53022

HGL PASSIVE  
20HP, 600V SCHEMATIC  
CONTACTOR VERSION

DRN. BY DSW DATE 10/10/17 DWG. NO. 30807-25C  
SCALE NONE SIZE C

SHT. 1 OF 1