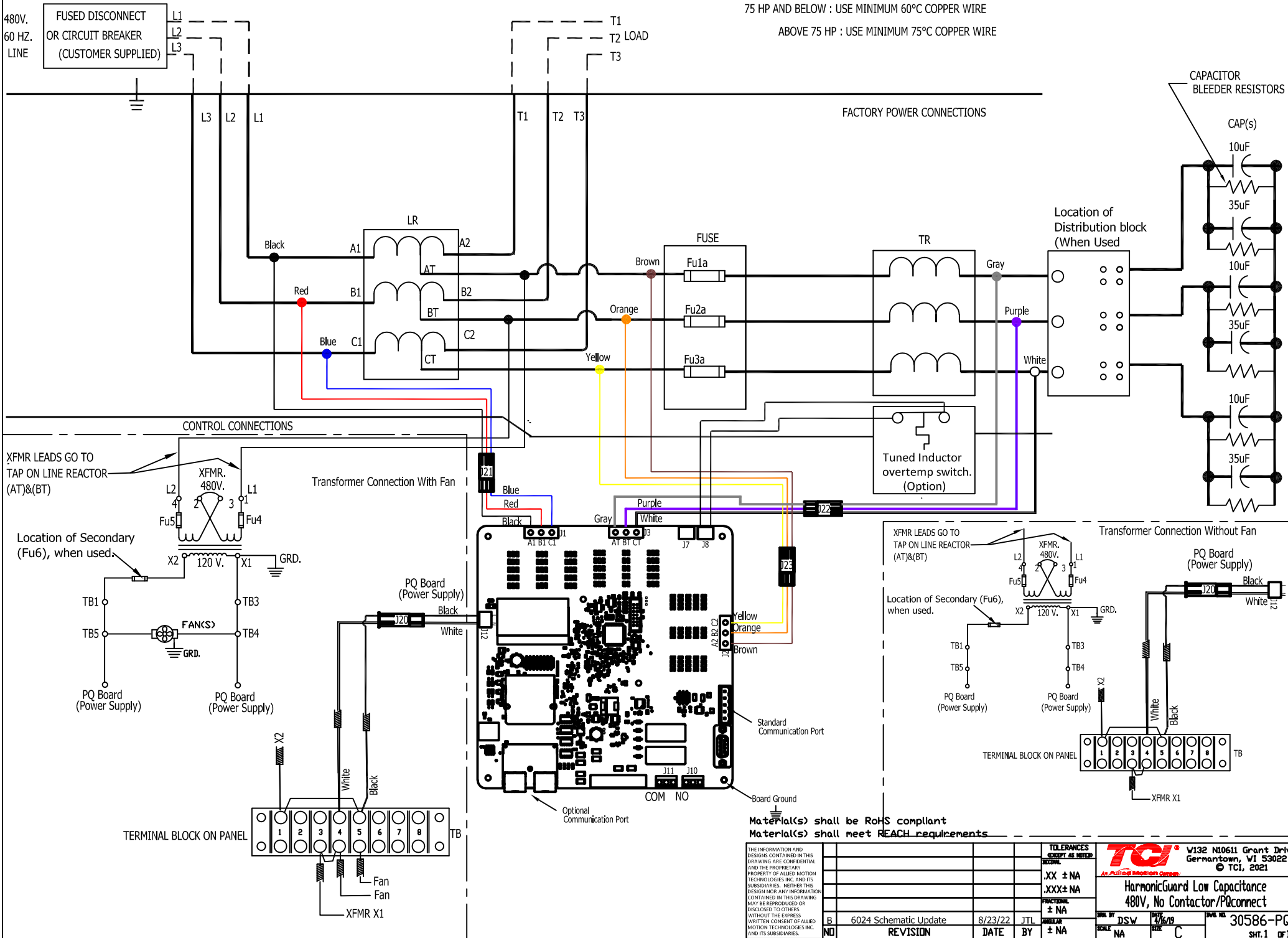


CUSTOMER CONNECTIONS

75 HP AND BELOW : USE MINIMUM 60°C COPPER WIRE

ABOVE 75 HP : USE MINIMUM 75°C COPPER WIRE



Material(s) shall be RoHS compliant
Material(s) shall meet REACH requirements

THE INFORMATION AND DESIGNS CONTAINED IN THIS DRAWING ARE CONFIDENTIAL AND THE PROPRIETARY PROPERTY OF ALLIED MOTION TECHNOLOGIES INC. AND ITS SUBSIDIARIES. NEITHER THIS DESIGN NOR ANY INFORMATION CONTAINED IN THIS DRAWING MAY BE REPRODUCED OR DISCLOSED TO OTHERS WITHOUT THE EXPRESS WRITTEN CONSENT OF ALLIED MOTION TECHNOLOGIES INC. AND ITS SUBSIDIARIES.

NO	REVISION	DATE	BY	SCALE	SIZE
B	6024 Schematic Update	8/23/22	JTL	1:1	A
ND					

TOLERANCES EXCEPT AS NOTED	<p>W132 N10611 Grant Drive Germantown, WI 53022 © TCI, 2021</p>
RESISTORS	
.XX ± NA .XXX ± NA RESISTORS ± NA	
HarmonicGuard Low Capacitance 480V, No Contactor/PQconnect	
DRAWN BY: DSW SCALE: NA	DATE: 4/6/19 SIZE: C
30586-PQ3	
SHT. 1 OF 1	