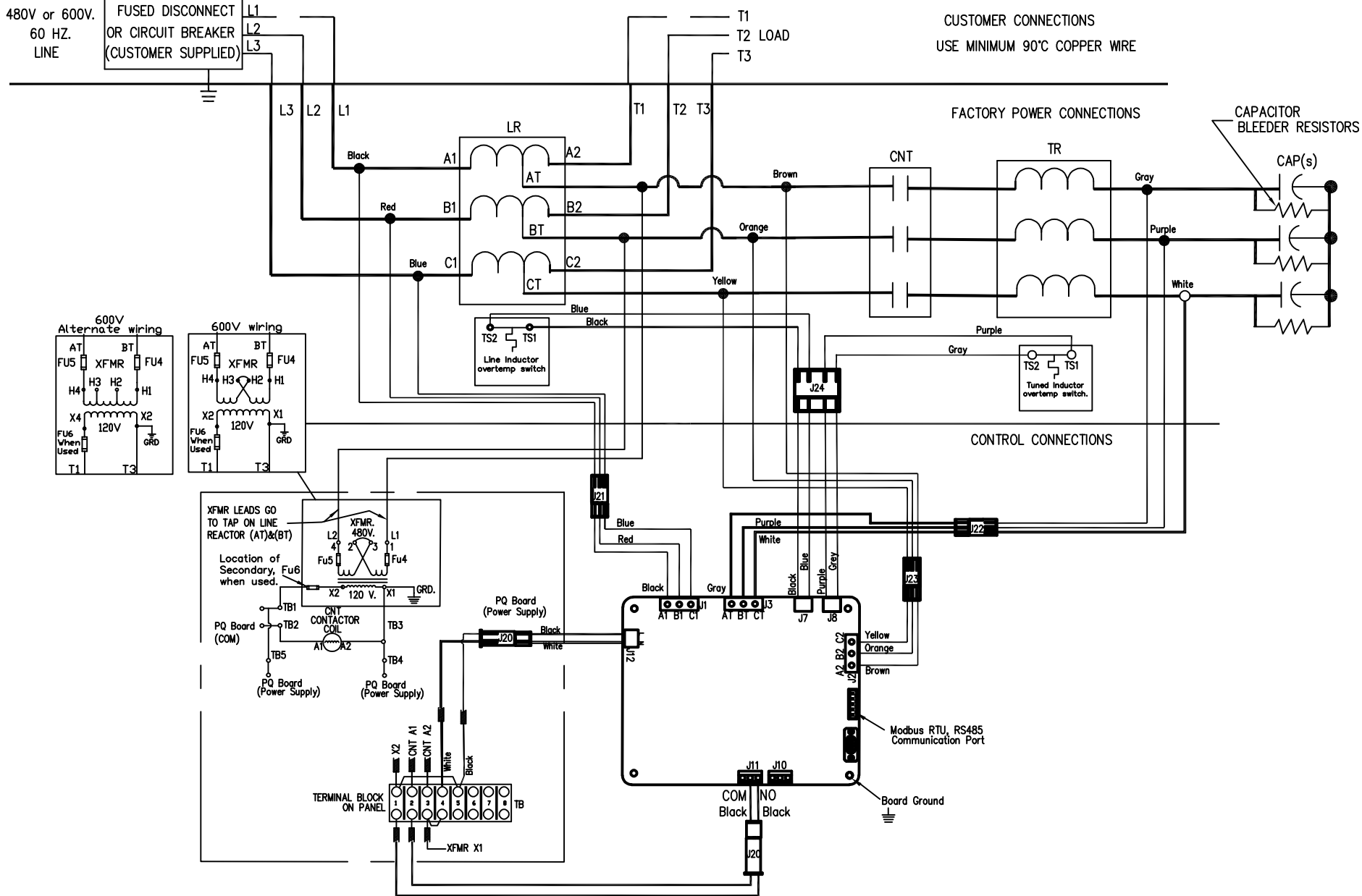


480V or 600V.
60 HZ.
LINE

FUSED DISCONNECT
OR CIRCUIT BREAKER
(CUSTOMER SUPPLIED)

L1
L2
L3

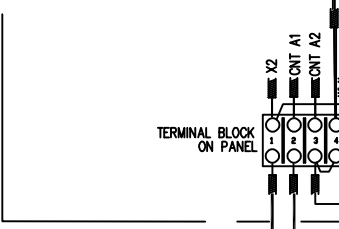
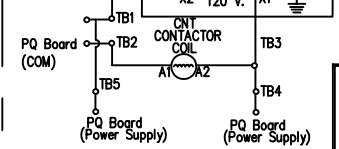
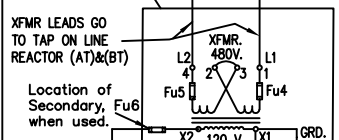
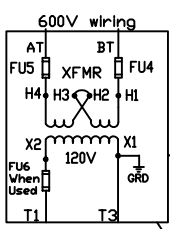
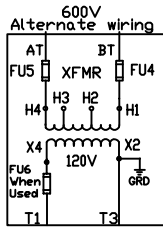


CUSTOMER CONNECTIONS
USE MINIMUM 90°C COPPER WIRE

FACTORY POWER CONNECTIONS

CAPACITOR BLEEDER RESISTORS

CAP(s)



THE INFORMATION AND DESIGNS CONTAINED IN THIS DRAWING ARE CONFIDENTIAL AND THE PROPRIETARY PROPERTY OF ALLIED MOTION TECHNOLOGIES INC. AND ITS SUBSIDIARIES. NEITHER THIS DESIGN NOR ANY INFORMATION CONTAINED IN THIS DRAWING MAY BE REPRODUCED OR DISCLOSED TO OTHERS WITHOUT THE EXPRESS WRITTEN CONSENT OF ALLIED MOTION TECHNOLOGIES INC. AND ITS SUBSIDIARIES.

| NO | REVISION | DATE | BY | TOLERANCES (EXCEPT AS NOTED) |
|----|--------------------------------------|------------|-----|-------------------------------------|
| C | 5888 TS wire harness graphics update | 3/11/22 | MJS | DECIMAL .XX ± .03 .XXX ± .010 |
| B | | 11/17/2021 | MJS | FRACTIONAL ± 1/32 |
| A | As Released | 11/15/2021 | DSW | ANGULAR ± 1° |

TCL® W132 N10611 Grant Drive
Germantown, WI 53022
© TCI, 2021

An Allied Motion Company

HarmonicShield Passive
3HP-10HP, 480/600V, Contactor/PQconnect

| | | |
|---------|-----------|------------|
| DRN. BY | DATE | DWG. NO. |
| DSW | 7/28/2021 | 30047-1PQ |
| SCALE | SIZE | |
| NA | A | SHT.1 OF 1 |