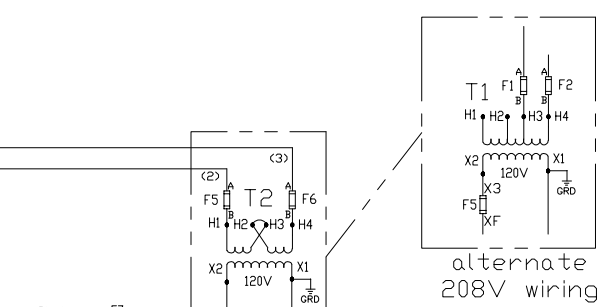
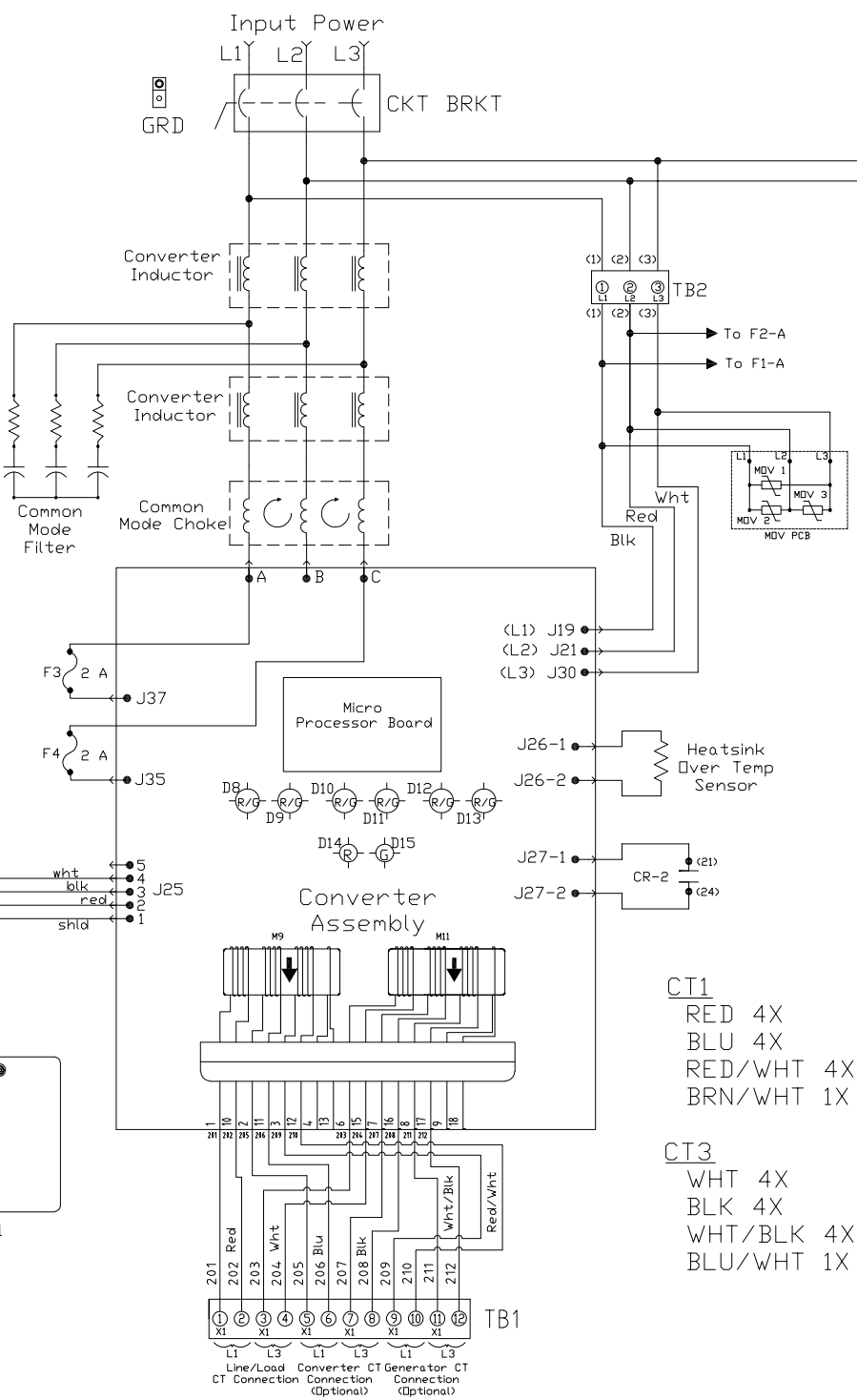
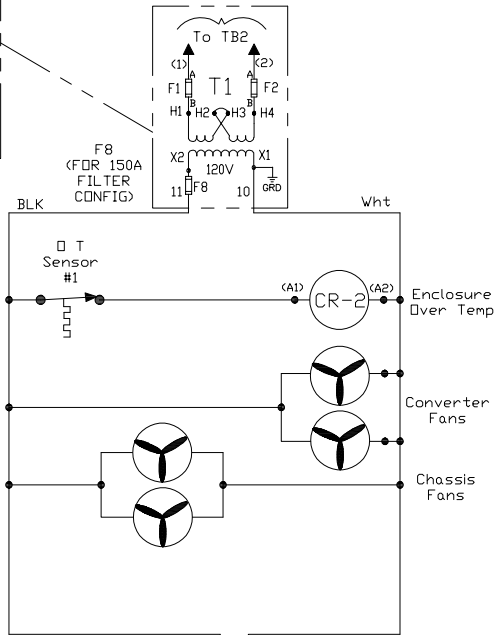
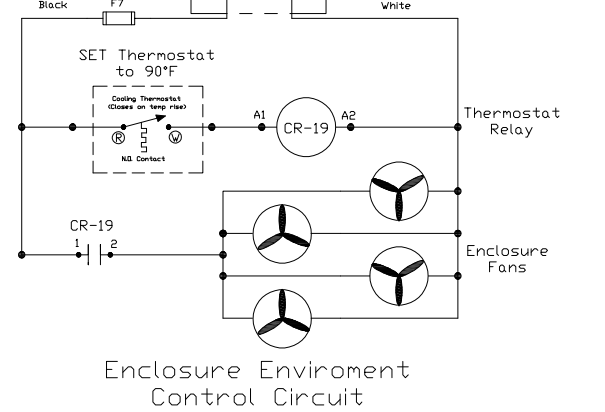


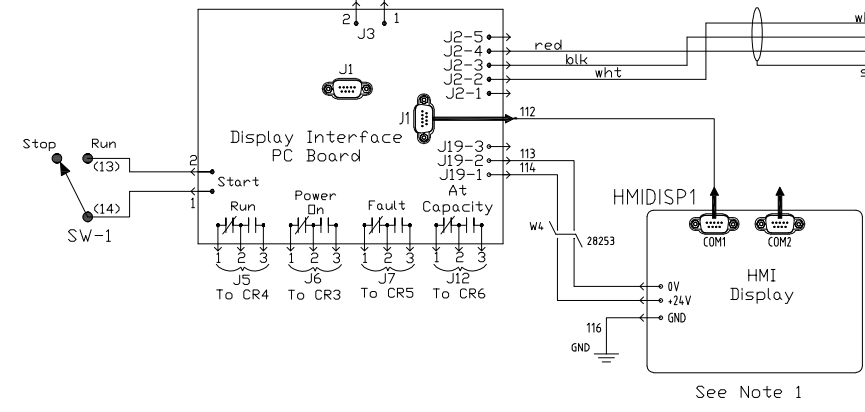
alternate 208V wiring
(connect to X3 when fuse is mounted in fuse block, connect to XF with Fuseclip)



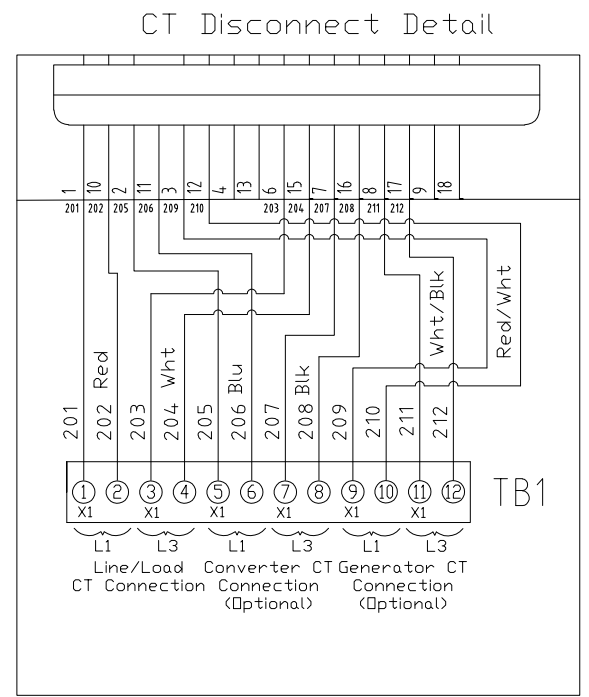
alternate 208V wiring



Enclosure Environment Control Circuit



See Note 1



CT Disconnect Detail

- CT1
RED 4X
BLU 4X
RED/WHT 4X
BRN/WHT 1X
- CT3
WHT 4X
BLK 4X
WHT/BLK 4X
BLU/WHT 1X

Notes:
1) Refer to schematic #28283-1 on units with network gateways.
2) DT1 is located in the exhaust area of the inductor tunnel.

H	add thermostat setting note	3/12/19	MJS	TOLERANCES (EXCEPT AS NOTED)	W132 N10611 Grant Drive Germantown, WI 53022
G	Change Thermo Contacts	4/16/18	RHW	DECIMAL	
E	added 208V wiring	7/31/17	MJS	.XX ± .02	
D	CR19 UPDATE NEW PIN #'S	9/19/16	MJS	.XXX ± .010	
C	Vibration Proof CR2 update	9/2/16	MJS	FRACTIONAL ± 1/32	
B	CR2 UPDATE FOR NEW MB	6/28/16	MJS	ANGULAR ± 1/2°	DRN. BY MJS DATE 1/17/14 DWG. NO. B 28789 SCALE N/A APRVD. SHT. 1 OF 1
NO	REVISION	DATE	BY		