

480 VOLTS  
80Hz MAX

FROM  
DRIVE

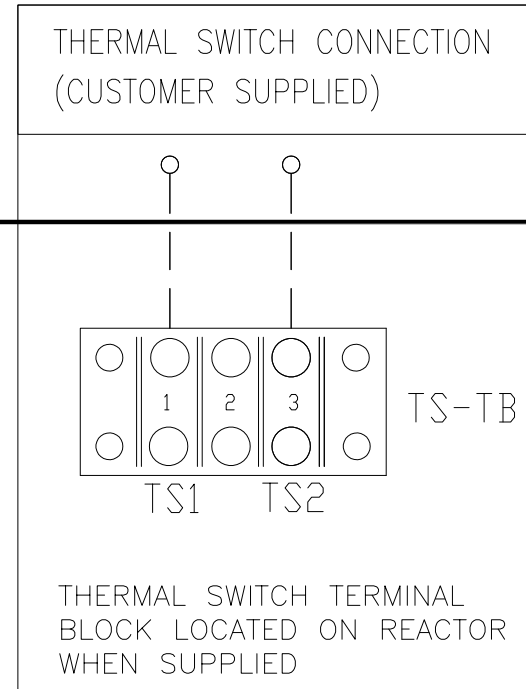
FUSED DISCONNECT  
OR CIRCUIT BREAKER  
(CUSTOMER SUPPLIED)

U  
V  
W

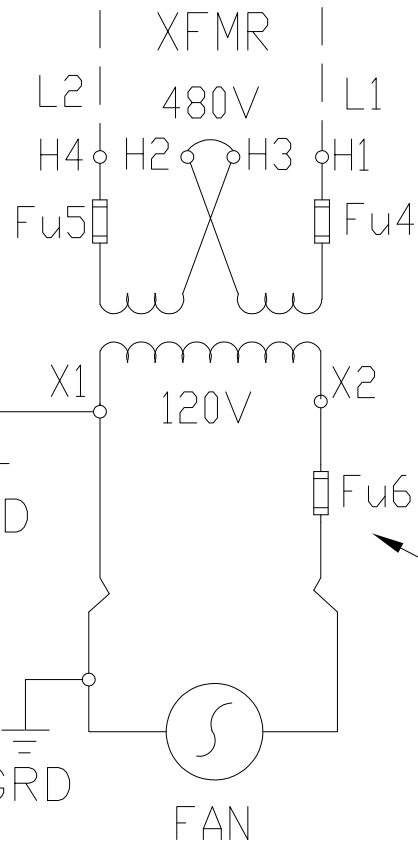
CUSTOMER CONNECTIONS  
INTO SINEWAVE FILTER

CUSTOMER  
CONNECTIONS

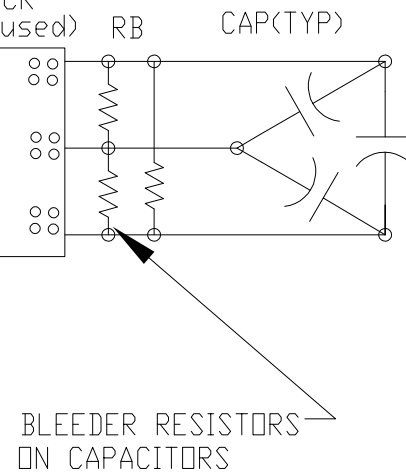
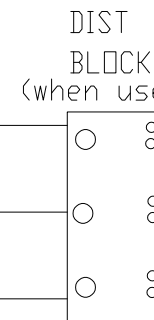
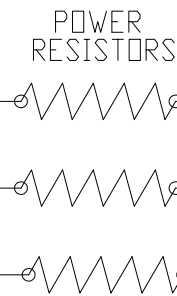
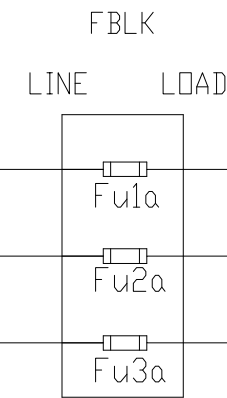
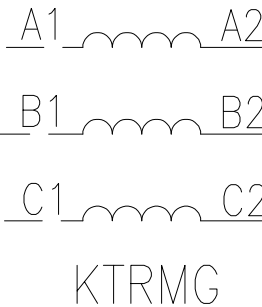
USE COPPER WIRE  
60°C MIN <100 A.  
75°C MIN ≥100 A.



Customer To Supply  
480V, Single Phase  
Power For fans



GRD



**DO NOT:**  
Connect Transformer  
To VFD Output Or Any  
Filter Terminals

LOCATION OF SECONDARY FUSE  
WHEN SUPPLIED

CONTROL SCHEMATIC

CUSTOMER IS RESPONSIBLE FOR INSTALLATION  
TO MEET ALL NATIONAL AND LOCAL ELECTRICAL CODES

				TOLERANCES (EXCEPT AS NOTED)	<b>TCL</b> W132 N10611 GRANT DRIVE GERMANTOWN, WI. 53022
				DECIMAL	
				.XX ± NA	Standard SineWave Filter 65AMPS TO 750AMPS.
				.XXX ± NA	
				FRACTIONAL ± NA	DRN. BY DSW DATE 10/07/2010 DWG. NO. 24281-3A
△	4896 ADD THERMAL SWITCH	09/23/19	JRN	ANGULAR ± NA	SCALE TO FIT APRVD. B
NO	REVISION	DATE	BY		SHT. 1 of 1