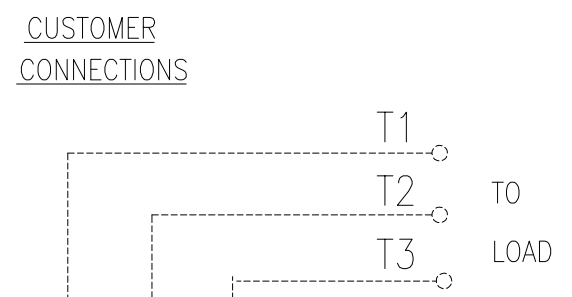
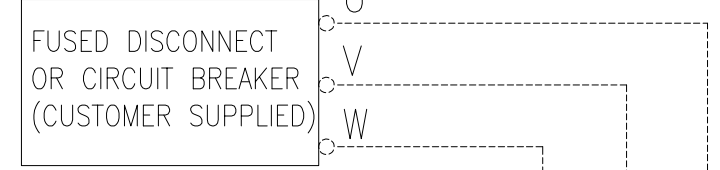
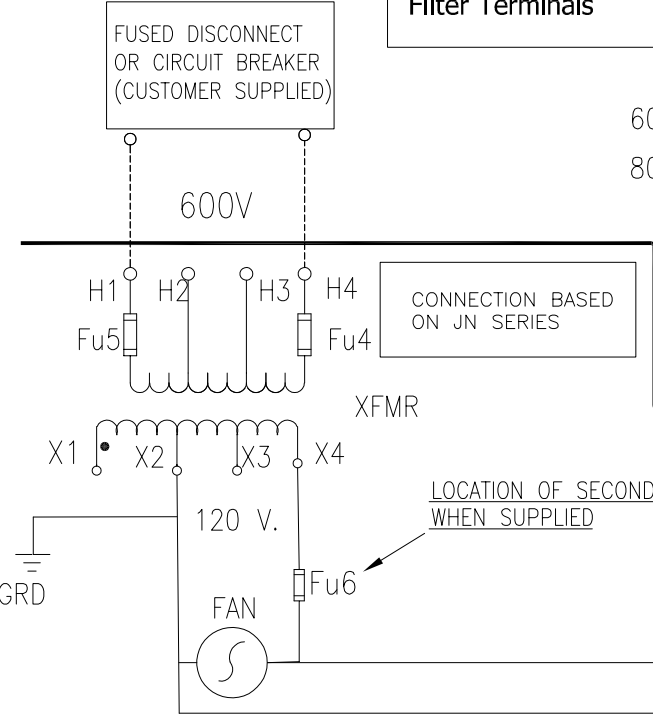


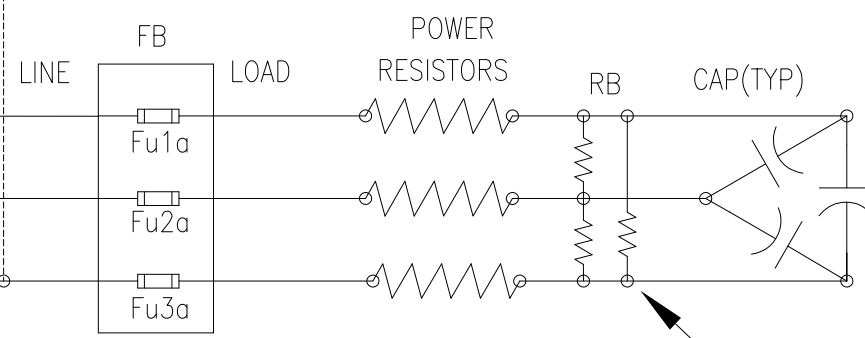
DO NOT:
Connect Transformer
To VFD Output Or Any
Filter Terminals

CUSTOMER CONNECTIONS
INTO SINEWAVE FILTER

USE COPPER WIRE
60°C MIN <100 A.
75°C MIN >100 A.

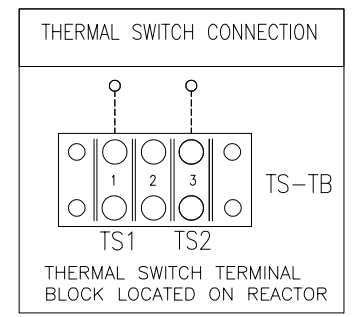
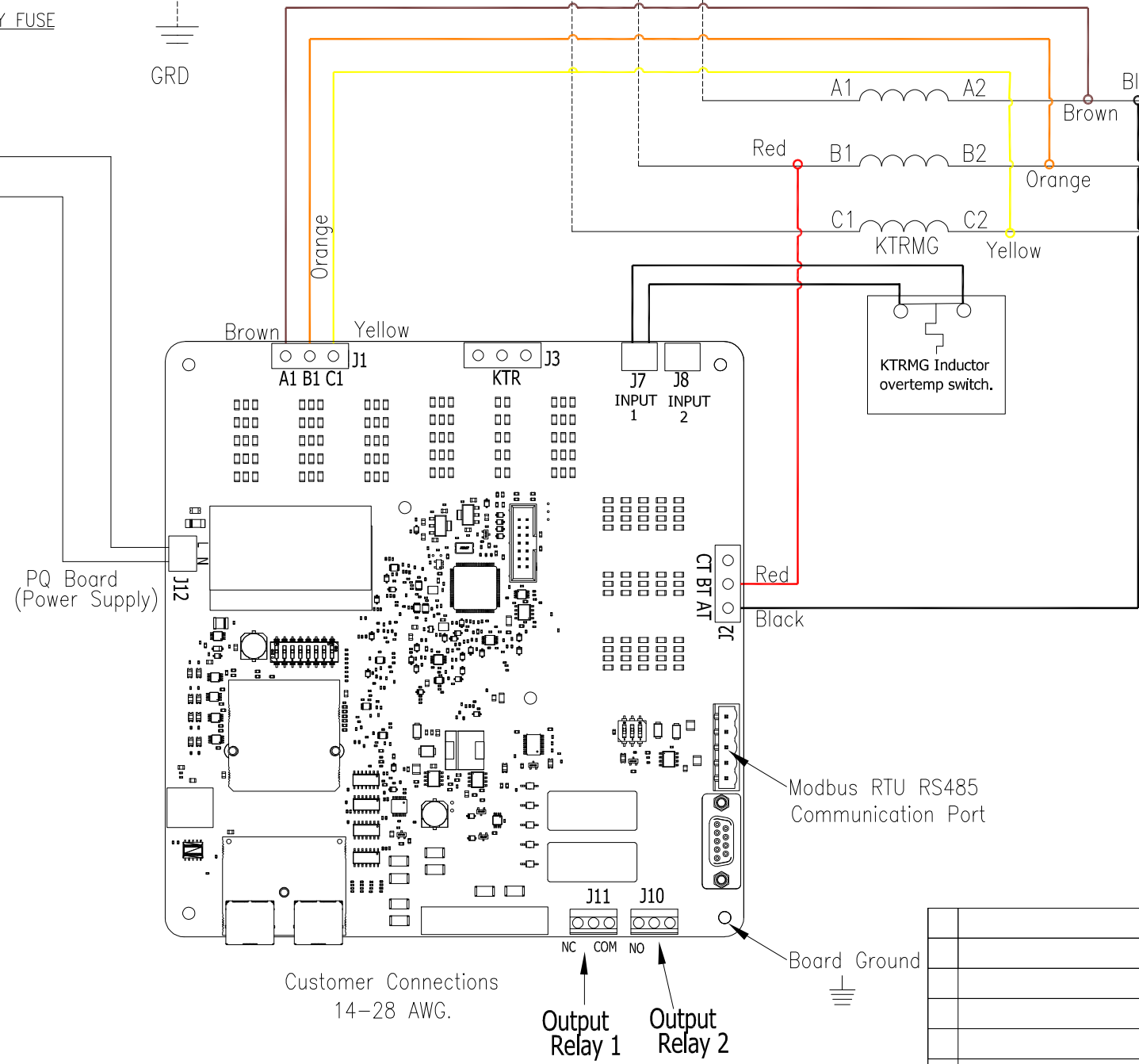
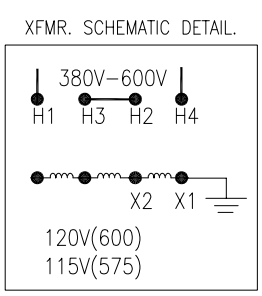
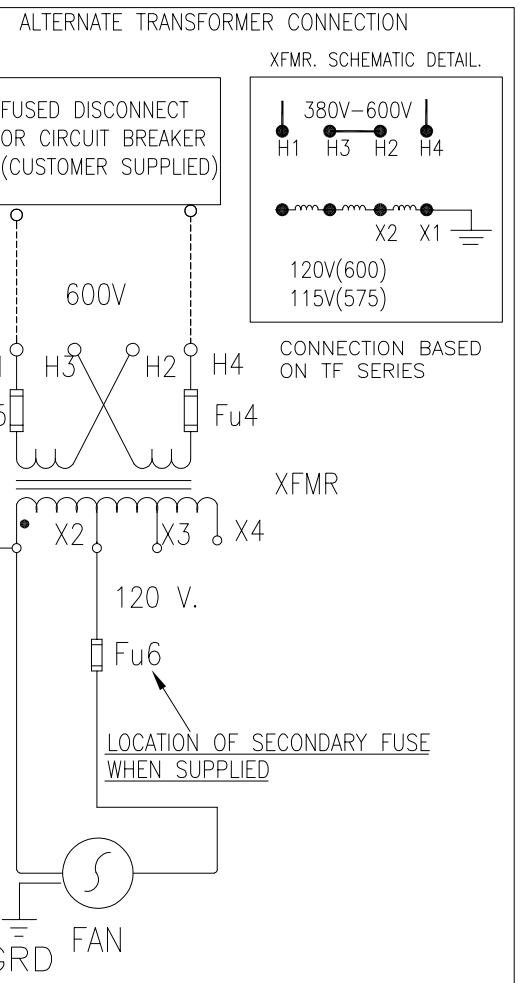


POWER SCHEMATIC



BLEEDER RESISTORS
ON CAPACITORS

CONTROL SCHEMATIC



CUSTOMER IS RESPONSIBLE FOR INSTALLATION
TO MEET ALL NATIONAL AND LOCAL ELECTRICAL CODES

| | | | | | | | |
|----|----------|------|----|------------------------------|--|---|--|
| | | | | TOLERANCES (EXCEPT AS NOTED) | | W132 N10611 Grant Drive Germantown, WI 53022 | |
| | | | | DECIMAL | | | |
| | | | | .XX ±NA | | SineWave Filter, PQConnect 65AMPS TO 750AMPS, 600V | |
| | | | | .XXX±NA | | | |
| | | | | FRACTIONAL | | DRN. BY DSW DATE 6/30/2020 DWG. NO. 24281-23P SCALE TO FIT APRVD. B SHT. 1 OF 1 | |
| | | | | ± 1/32 | | | |
| | | | | ANGULAR | | | |
| | | | | ± 1/2" | | | |
| NO | REVISION | DATE | BY | | | | |