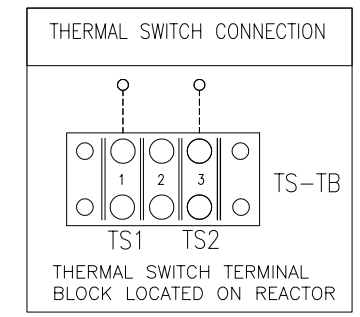
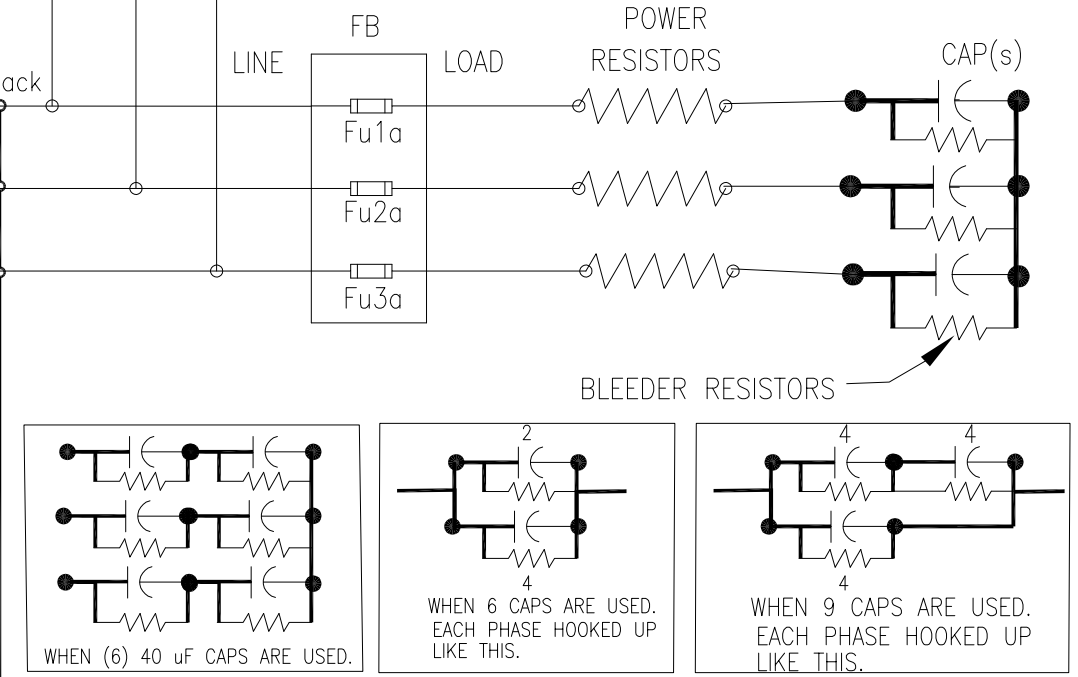
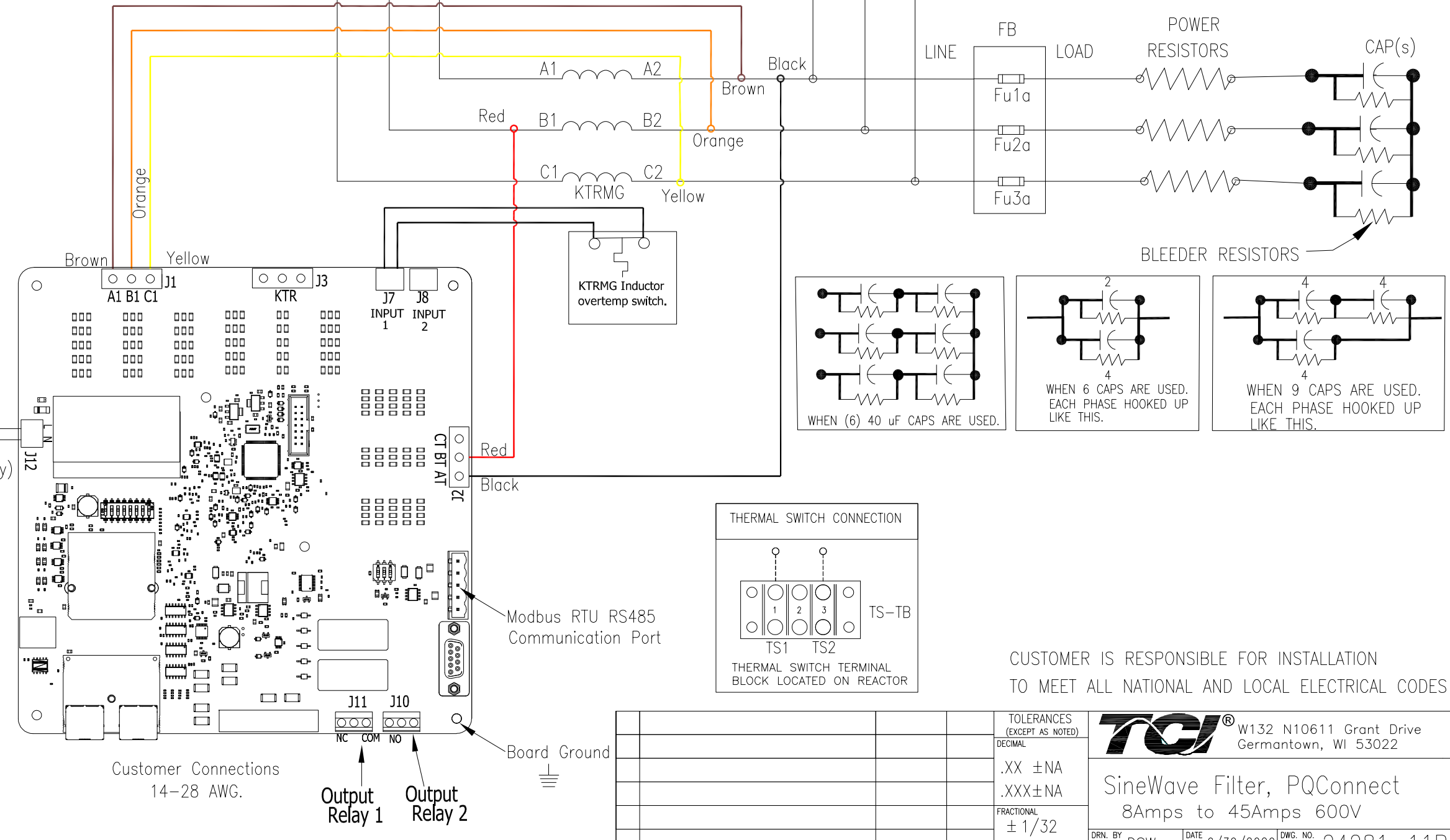
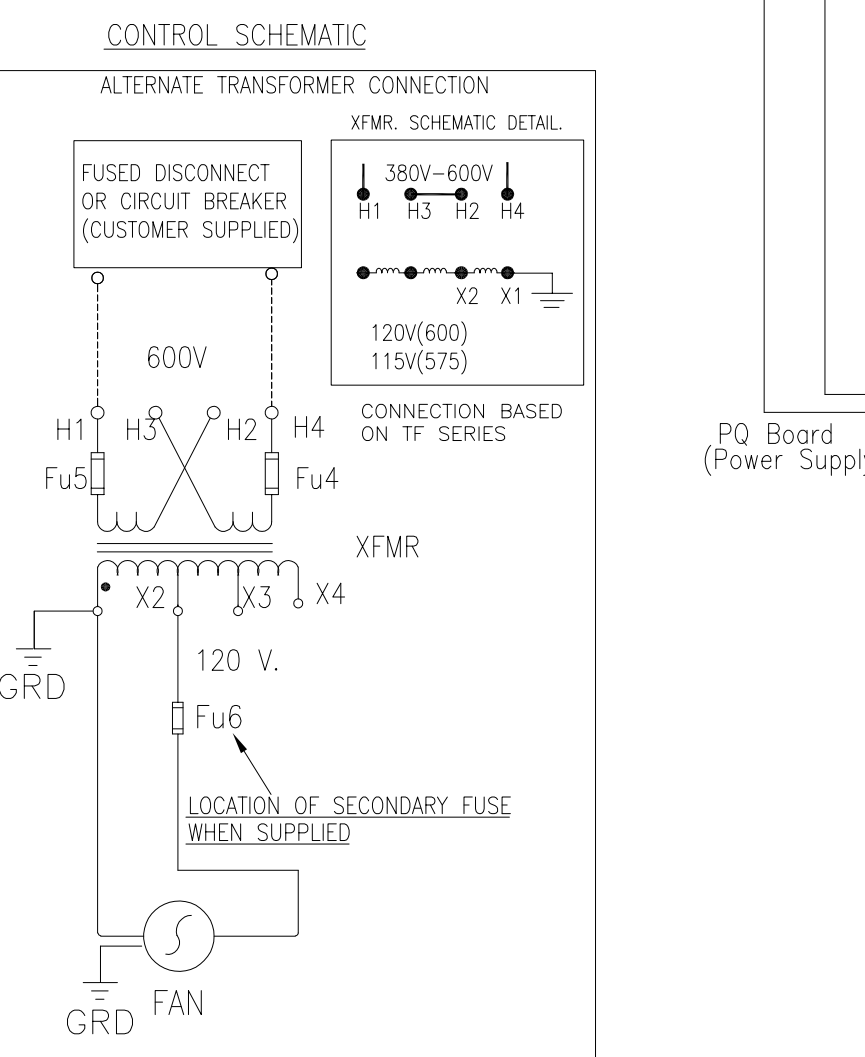
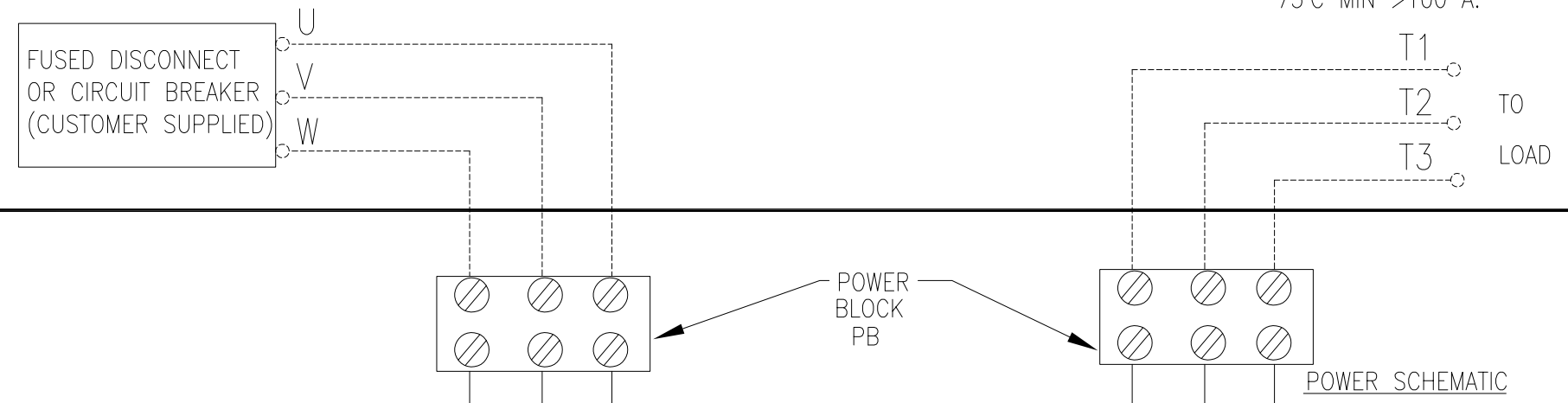
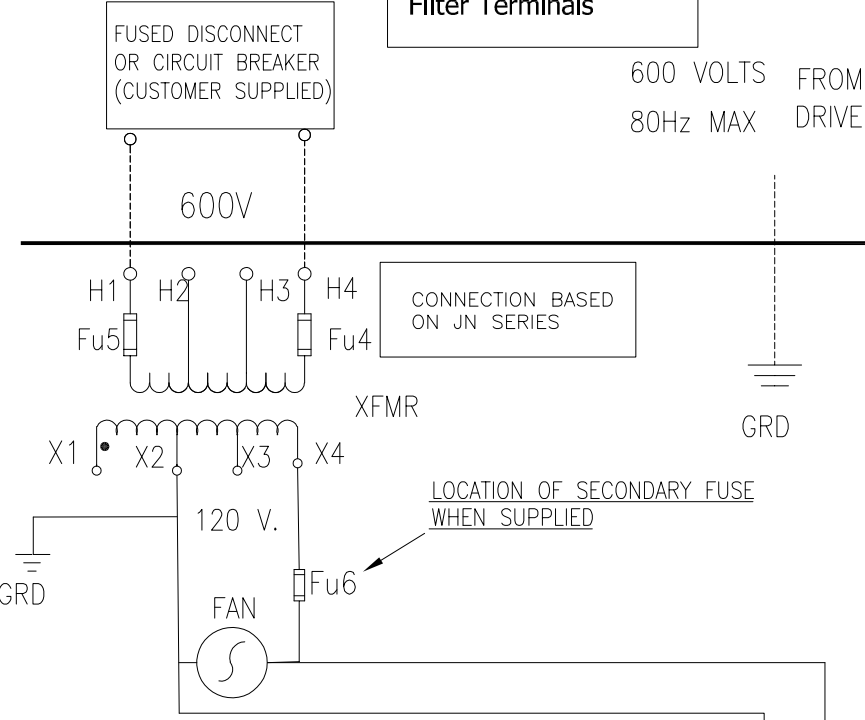


DO NOT:
Connect Transformer
To VFD Output Or Any
Filter Terminals

CUSTOMER CONNECTIONS
INTO SINEWAVE FILTER

CUSTOMER
CONNECTIONS

USE COPPER WIRE
60°C MIN <100 A.
75°C MIN >100 A.



CUSTOMER IS RESPONSIBLE FOR INSTALLATION
TO MEET ALL NATIONAL AND LOCAL ELECTRICAL CODES

				TOLERANCES (EXCEPT AS NOTED)		W132 N10611 Grant Drive Germantown, WI 53022	
				DECIMAL			
				.XX ±NA		SineWave Filter, PQConnect 8Amps to 45Amps 600V	
				.XXX±NA			
				FRACTIONAL		DRN. BY DSW DATE 6/30/2020 DWG. NO. 24281-11P SCALE TO FIT APRVD. B SHT. 1 OF 1	
				± 1/32			
				ANGULAR			
				± 1/2'			
NO	REVISION	DATE	BY				