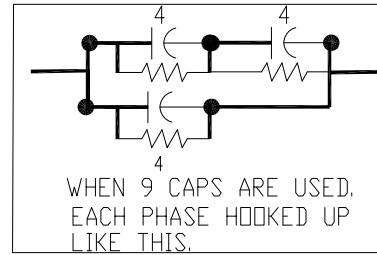
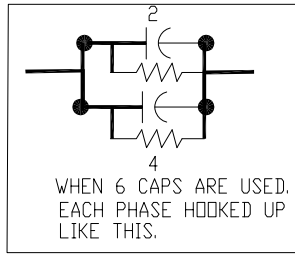
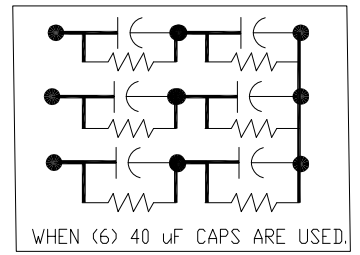
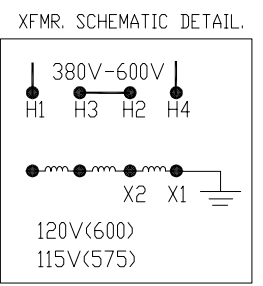
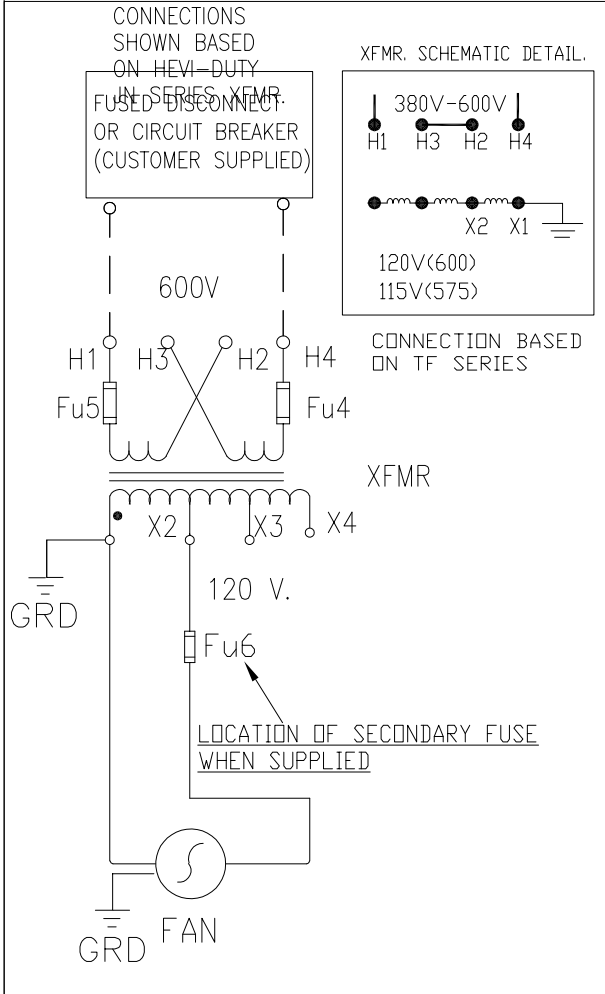
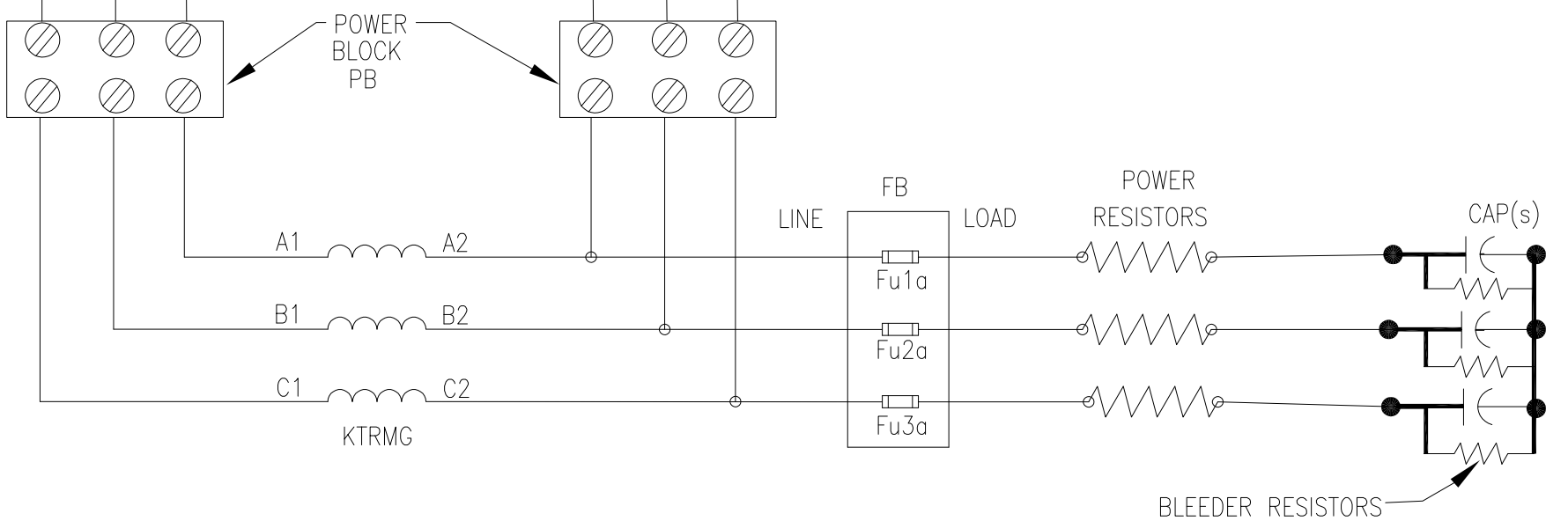
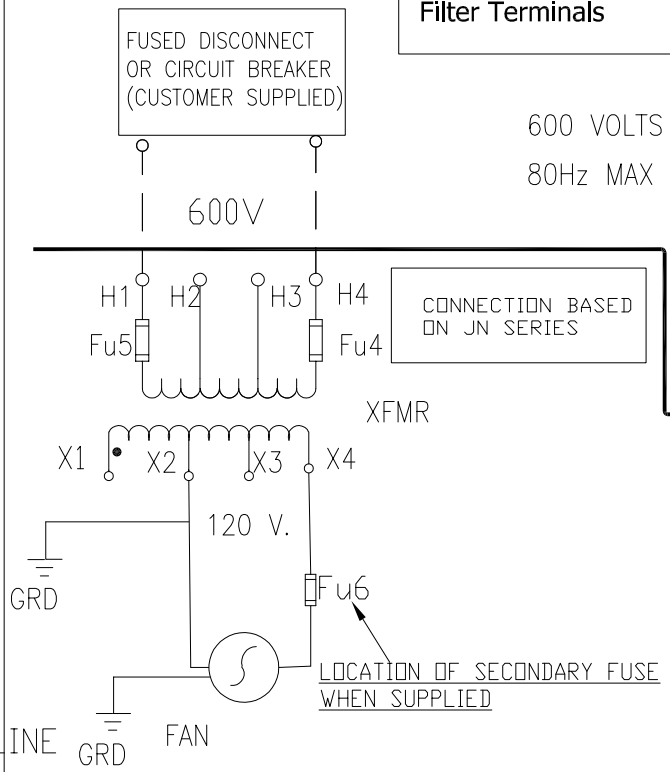
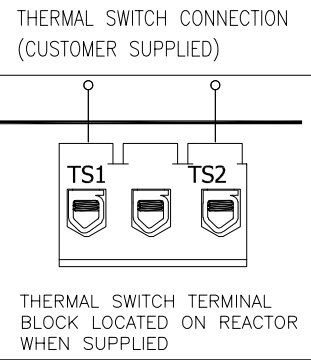


DO NOT:
Connect Transformer
To VFD Output Or Any
Filter Terminals

CUSTOMER CONNECTIONS
INTO SINEWAVE FILTER

USE COPPER WIRE
60°C MIN <100 A.
75°C MIN >100 A.



CUSTOMER IS RESPONSIBLE FOR INSTALLATION
TO MEET ALL NATIONAL AND LOCAL ELECTRICAL CODES

				TOLERANCES (EXCEPT AS NOTED)
				DECIMAL
				.XX ± NA
				.XXX ± NA
				FRACTIONAL
				± 1/32
				ANGULAR
				± 1/2°
⊖	SECONDARY FUSING NOTE	3/21/16	BWM	
NO	REVISION	DATE	BY	

TCL® W132 N10611 GRANT DRIVE
GERMANTOWN, WI. 53022

SineWave Filter
8Amps To 45Amps, 600V

DRN. BY DSW DATE 10/12/2010 DWG. NO. 24281-11A
SCALE TO FIT APRVD. B SHT. 1 of 1