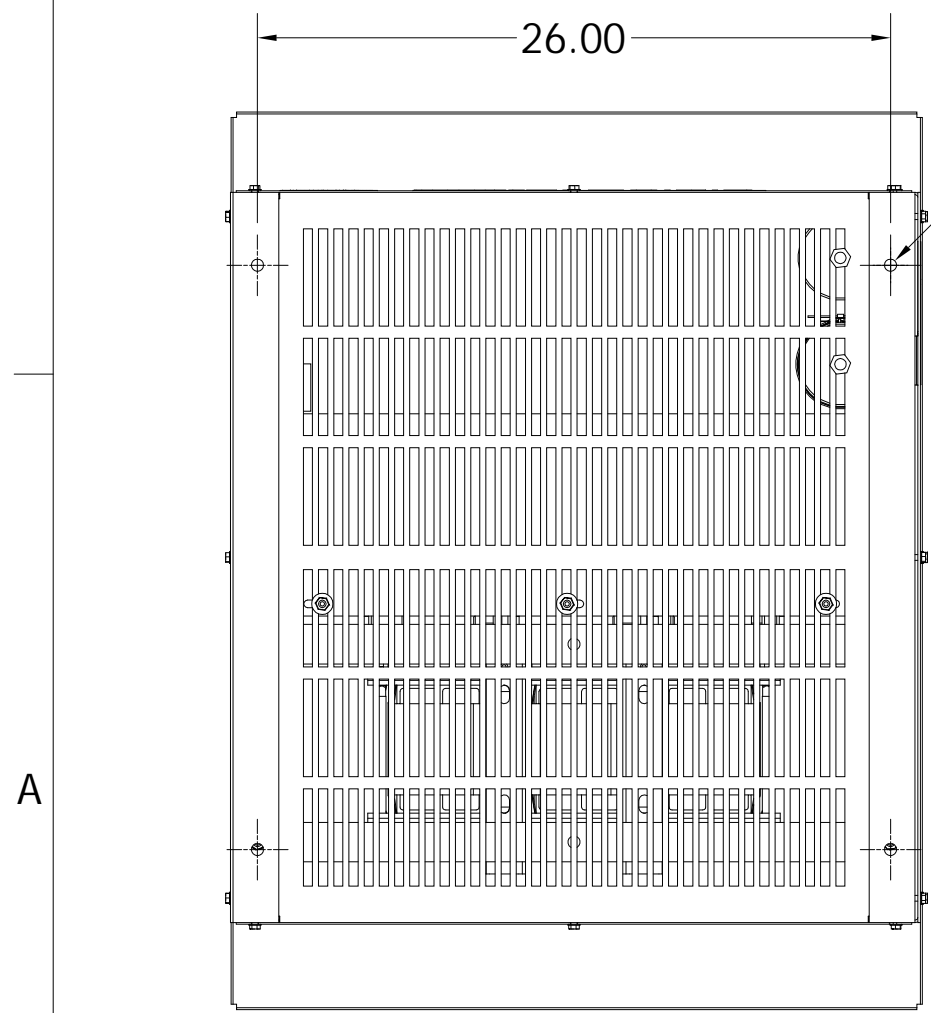
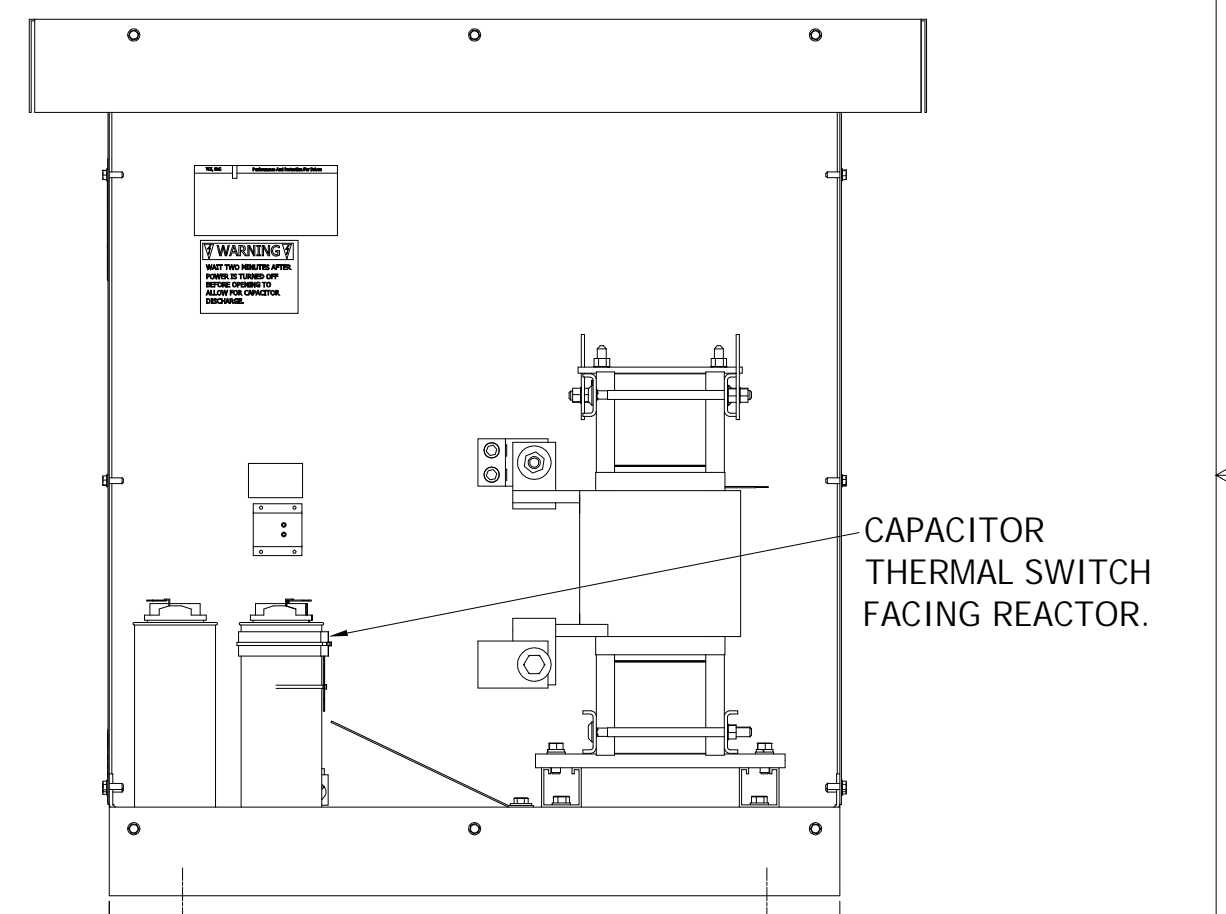
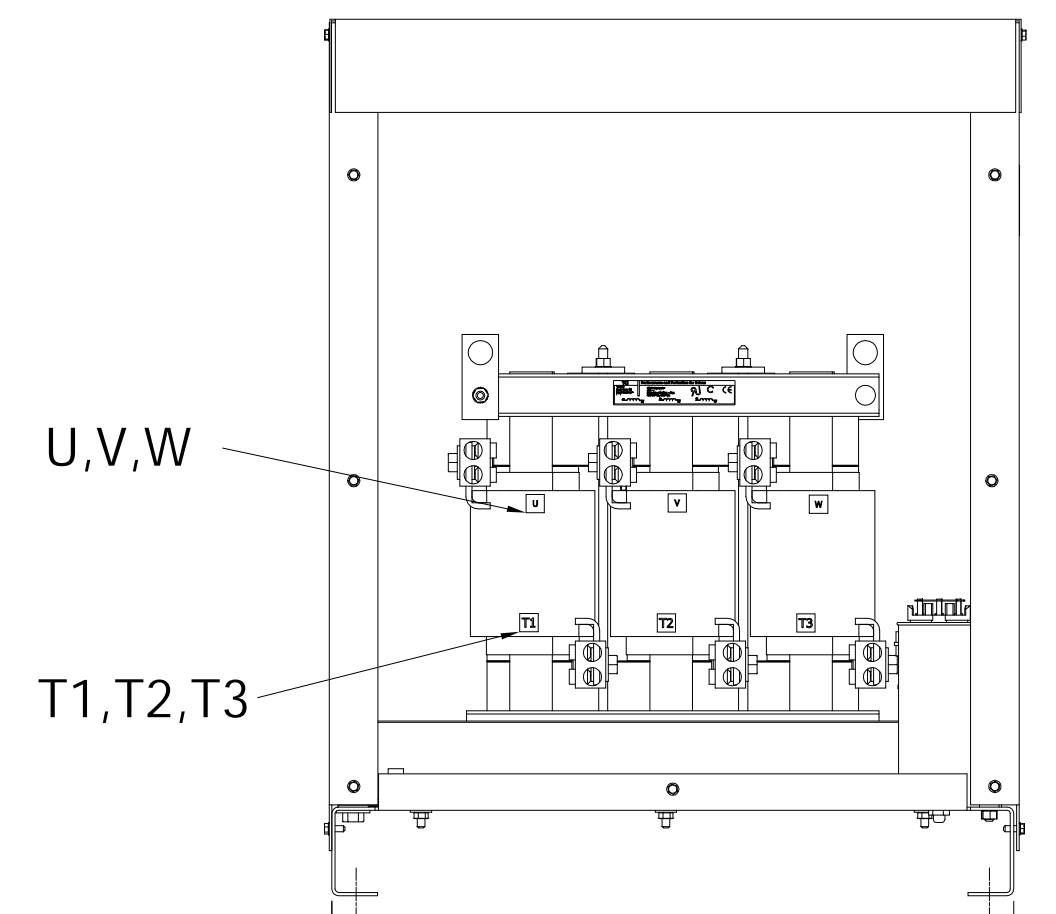
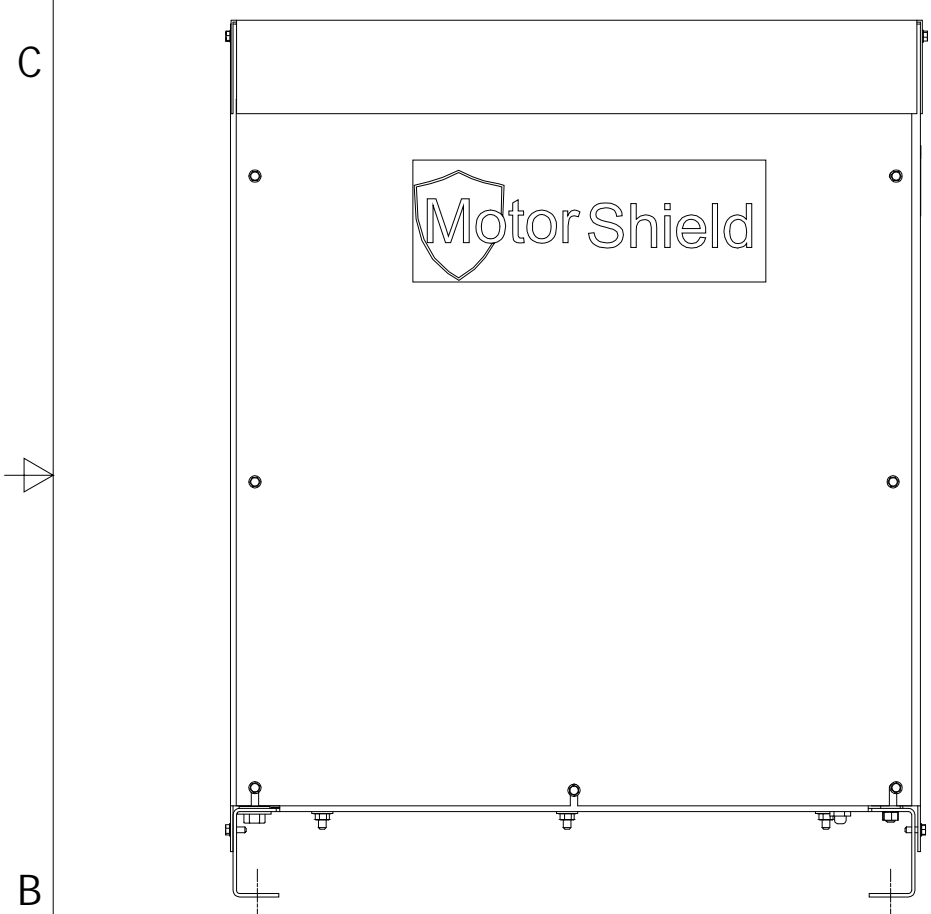


NOTE: NUMBER OF CAPACITORS VARY ON HORSEPOWER.



0.50 DIA HOLES  
4 PLACES.

NOTE: FOR TERMINAL TORQUE  
SEE IOM MANUAL.

MSD PART NUMBER	HP	VOLTAGE	CURRENT	WEIGHT	PRESSURE	TERMINAL WIRE RANGE
MSD0160A300	125	480V	160 AMPS	340LBS		250MCM-1AWG
MSD0200A300	150	480V	200 AMPS	425LBS	(2)	350MCM-6AWG
MSD0250A300	200	480V	250 AMPS	450LBS	(2)	350MCM-6AWG
MSD0305A300	250	480V	305 AMPS	460LBS	(2)	350MCM-6AWG

CUSTOMER IS RESPONSIBLE FOR INSTALLATION  
TO MEET ALL NATIONAL AND LOCAL ELECTRICAL CODES.

NO	REVISION	DATE	BY	TOLERANCES (EXCEPT AS NOTED)
E	3696 ADD DISCHARGE LABEL	7/29/16	DSW	DECIMAL
D	3508, FT LBS TO IN LBS	4/12/16	DSW	.XX +/- .25
D	3364, 75°C TO 90°C MIN	6/30/2015	DSW	.XXX +/- .10
C	3308 ADD CUSTOMER ENTRANCE	5/19/15	DSW	FRACTIONAL
B	AS RELEASED	4/23/15	DSW	+/- 1/16
A	AS BUILT	1/20/15	DSW	ANGULAR
NO				+/- 1°

**TCL**® W132 N10611 Grant Drive  
Germantown, WI 53022

**MSD 160AMPS TO 305AMPS**  
MotorShield Sinewave Filter  
480/3/60, Type 1/3R.

DRN BY: DSW DATE: 1/20/15 DWG. No: 105798DG  
SCALE: 1/8 APRVD. SHEET 1 OF 1