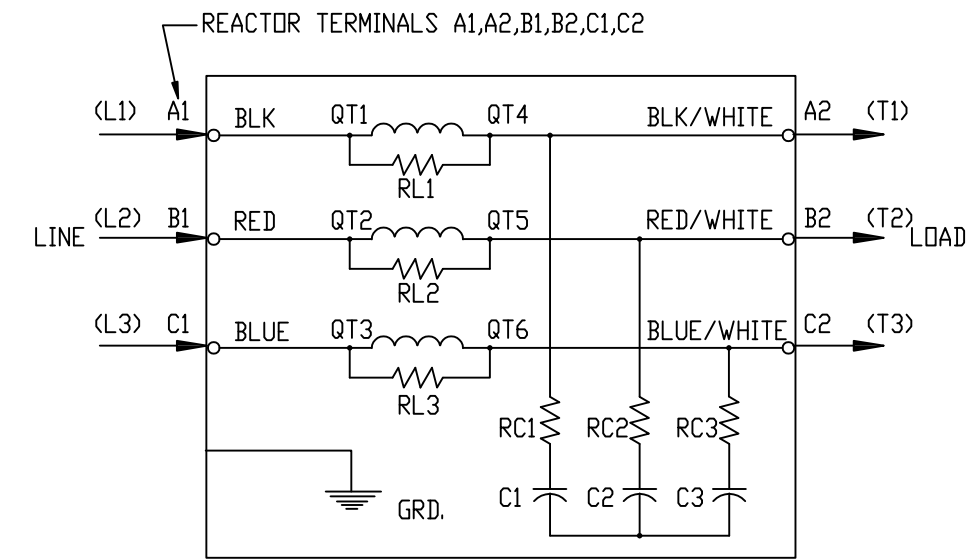


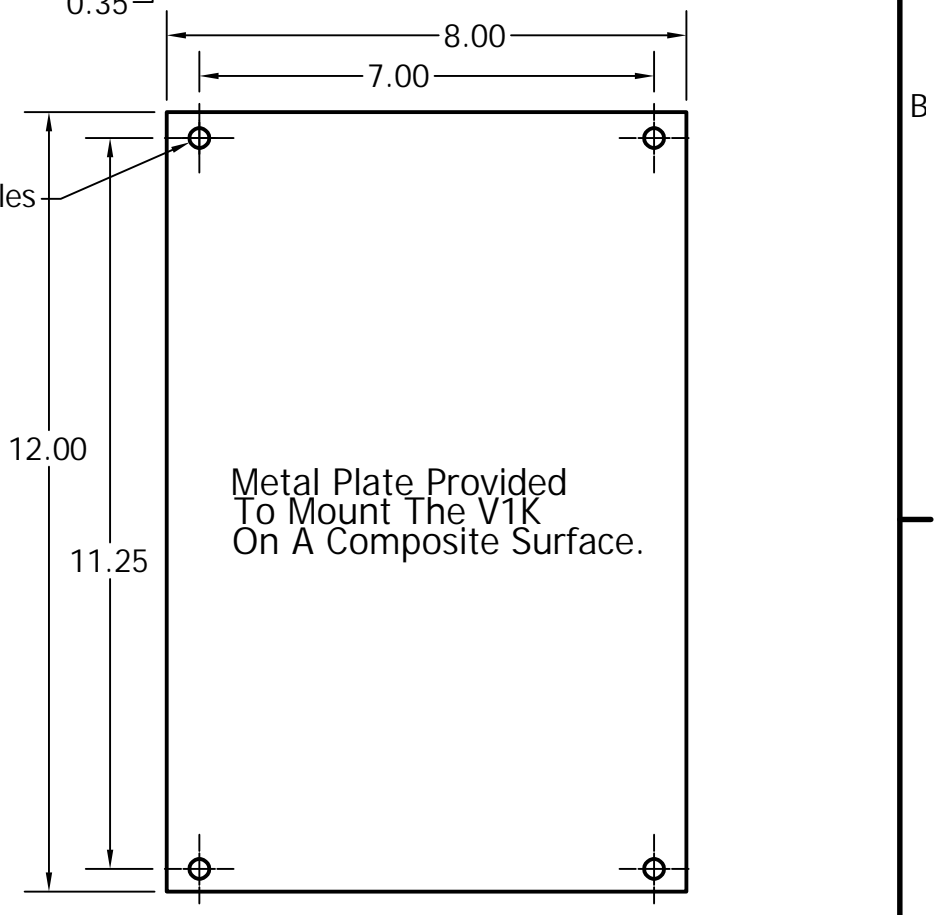
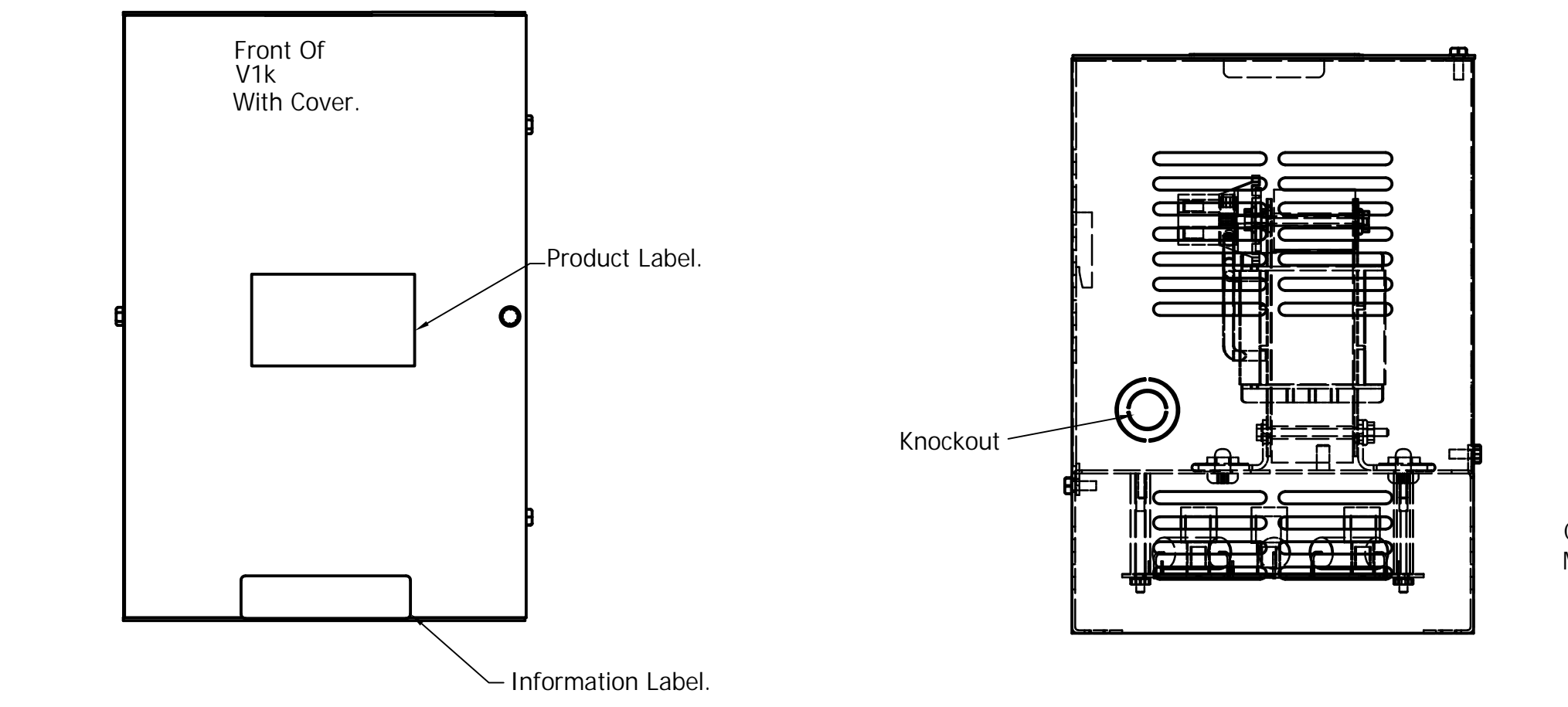
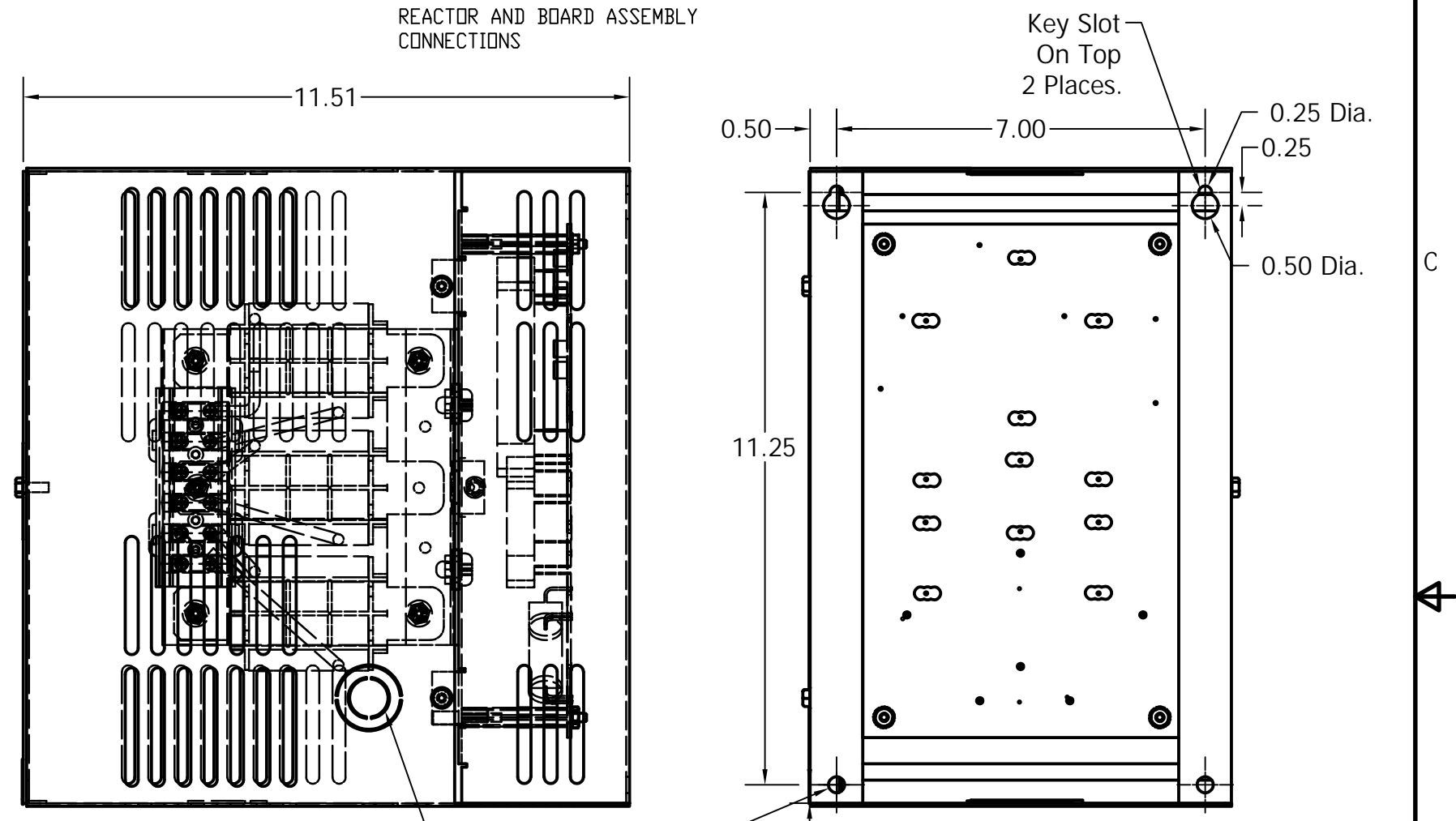
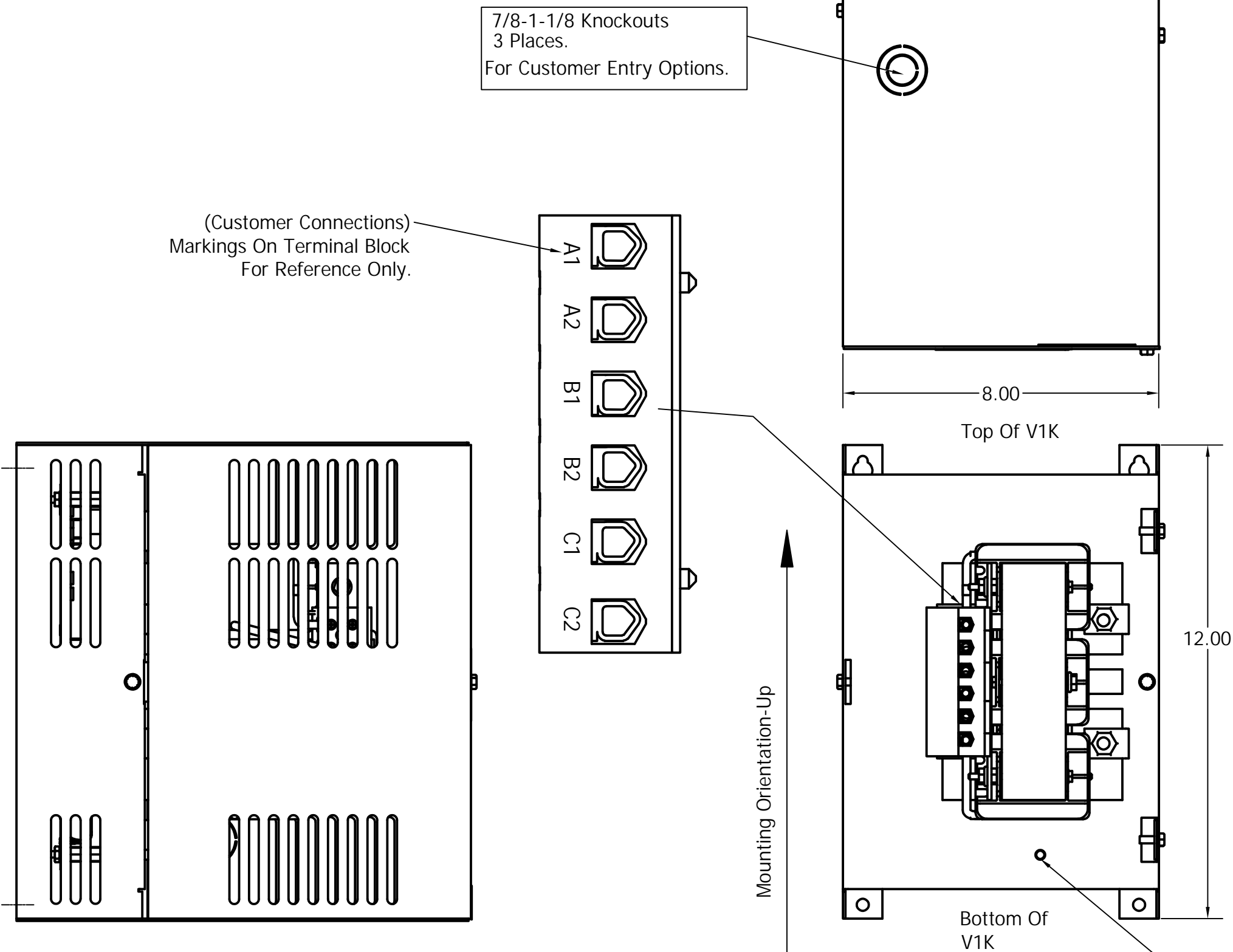
See V1K Installation Guide For Terminal Wire Size And Torque Information.

Note: Maintain Clearance of 3 Inches On All Sides To Other Equipment.

V1K Part Number	Rated Voltage	Amps	Phase	Weight (LBS)
V1K80A01	600	80	3	29
V1K80A01EX	600	80	3	29



REACTOR AND BOARD ASSEMBLY CONNECTIONS



Customer Is Responsible For Installation to Meet All National And Local Electrical Codes.
Material(s) Shall be RoHS Compliant

<p>TCL, LLC CLAIMS PROPRIETARY RIGHTS IN THE MATERIAL HEREIN DISCLOSED. IT IS SUPPLIED WITHOUT PREJUDICE TO ANY PATENT RIGHTS OF TCL AND MAY NOT BE REPRODUCED OR USED TO MANUFACTURE ANYTHING SHOWN THEREIN WITHOUT WRITTEN PERMISSION FROM TCL.</p>	TOLERANCES (EXCEPT AS NOTED)		W132 N10611 Grant Drive Germantown, WI 53022
	DECIMAL		
	.XX ± .25 .XXX ± .10		
	FRACTIONAL		
± 1/16		<p>DRN BY: DSW DATE: 4/26/17</p> <p>SCALE: TO FIT APRVD: SIZE: 102406DG</p>	<p>V1K, Enclosed, TYPE 1 80 Amps</p>
ANGULAR ± 1°		<p>NO REVISION DATE BY</p>	