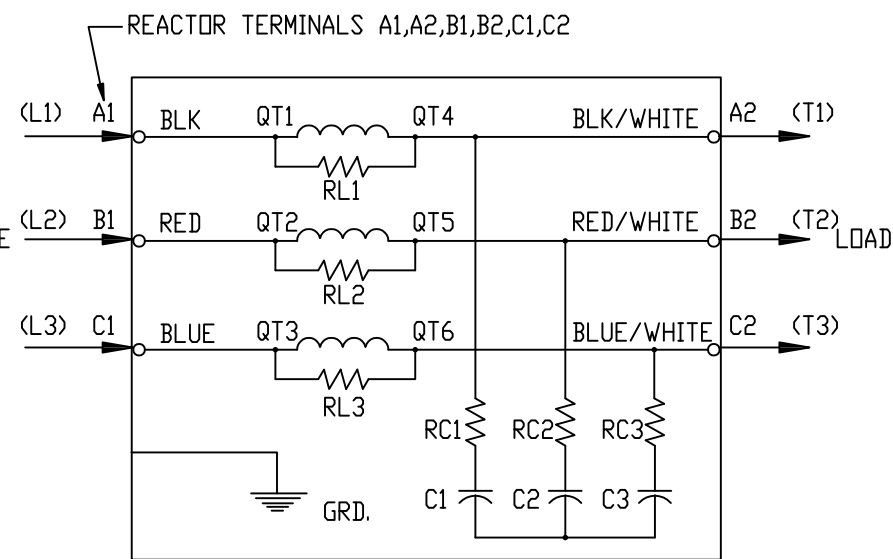


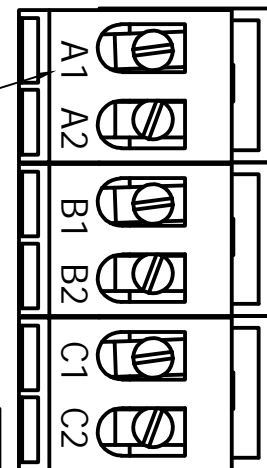
See V1K Installation Guide For Terminal Wire Size And Torque Information.

Note: Maintain Clearance of 3 Inches On All Sides To Other Equipment.

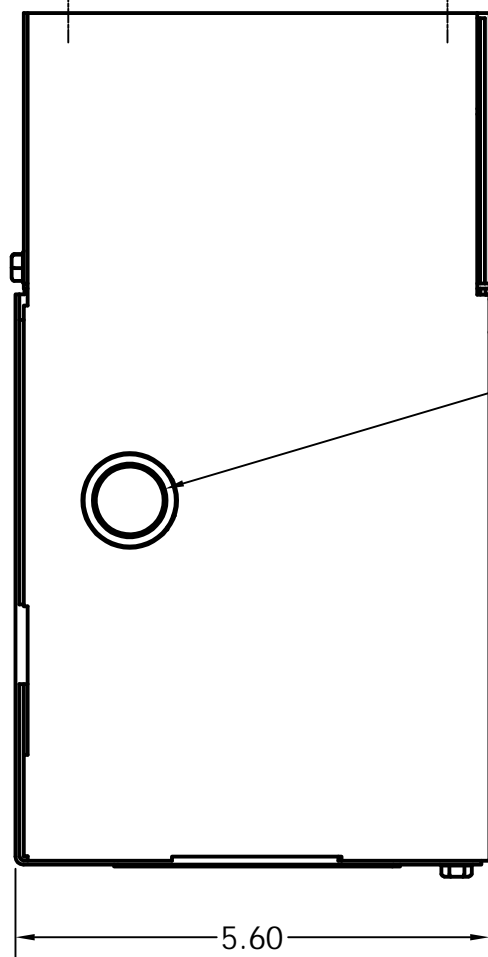


REACTOR AND BOARD ASSEMBLY CONNECTIONS

(Customer Connections) Markings On Terminal Block For Reference Only.

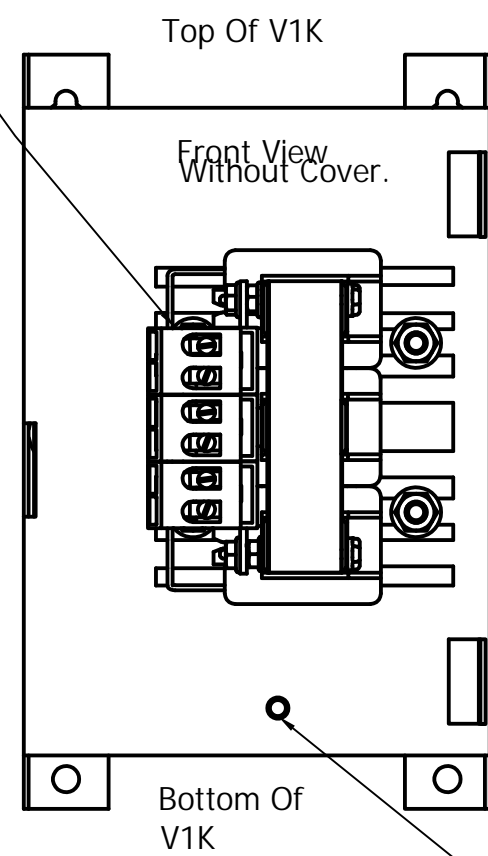
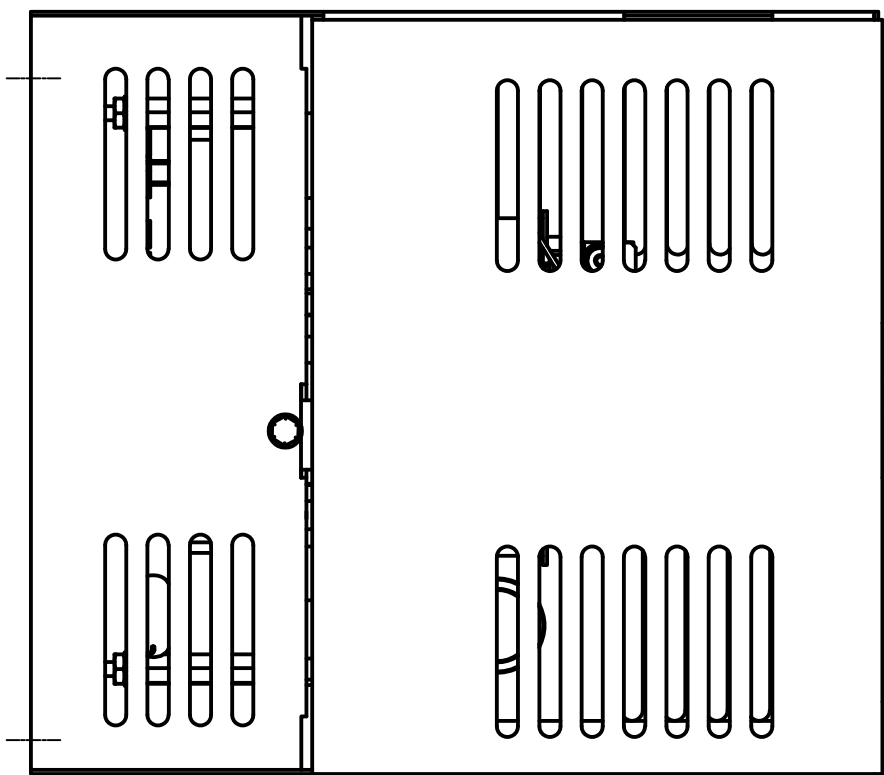


Back Of V1K Mounted Against Wall



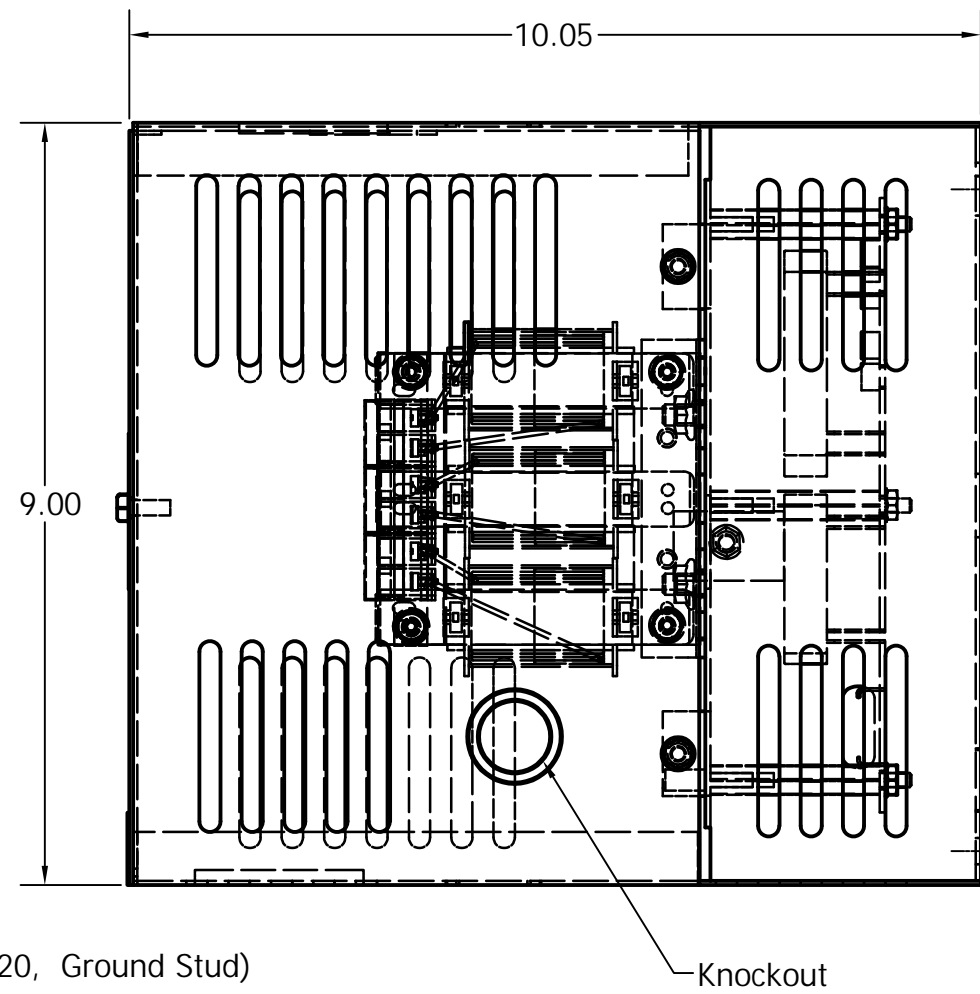
7/8-1-1/8 Knockouts 3 Places. For Customer Entry Options.

V1K Part Number	Rated Voltage	Amps	Phase	Weight (LBS)
V1K2A01	600	2	3	11
V1K2A01EX	600	2	3	11
V1K3A01	600	3	3	11
V1K3A01EX	600	3	3	11
V1K4A01	600	4	3	11
V1K4A01EX	600	4	3	11
V1K6A01	600	6	3	11
V1K6A01EX	600	6	3	11
V1K8A01	600	8	3	11
V1K8A01EX	600	8	3	11
V1K12A01	600	12	3	11
V1K12A01EX	600	12	3	11

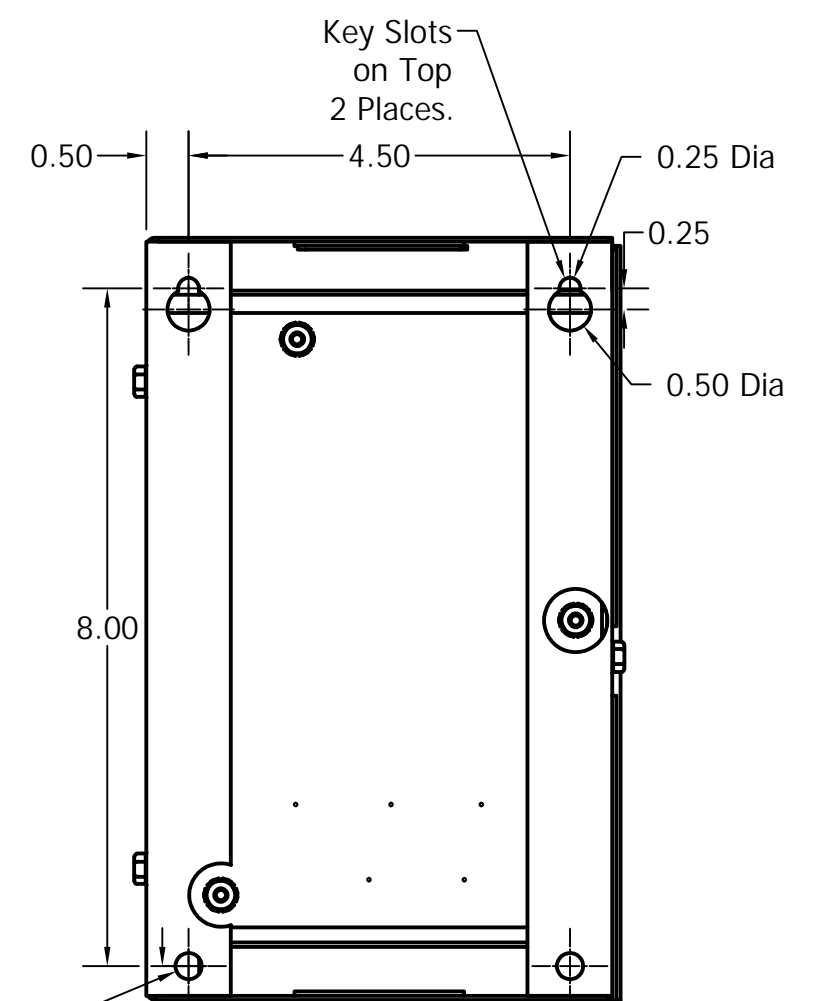


Mounting Orientation-Up

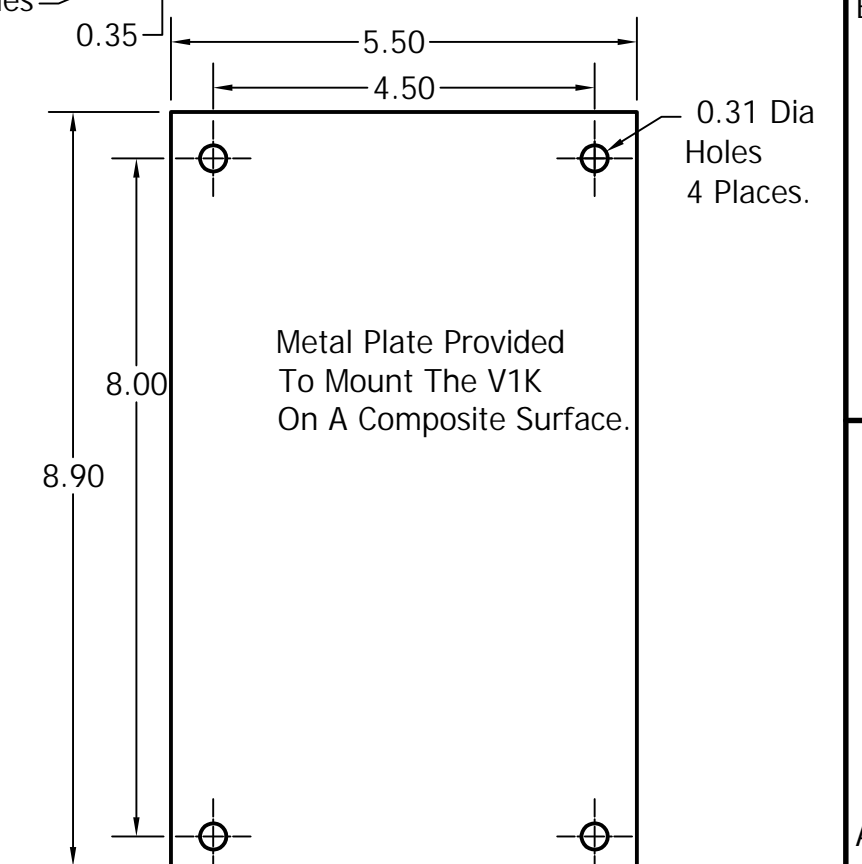
(0.25-20, Ground Stud)



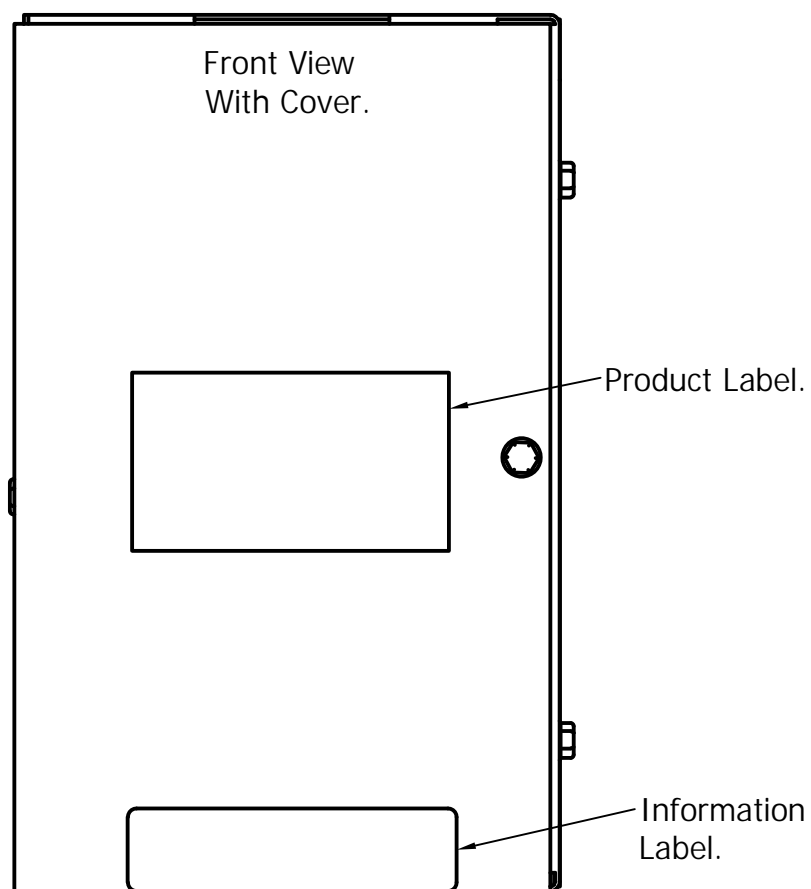
0.31 Dia Holes 2 Places



0.31 Dia Holes 2 Places



Metal Plate Provided To Mount The V1K On A Composite Surface.



Product Label.

Information Label.

Customer Is Responsible For Installation to Meet All National And Local Electrical Codes.

Material(s) Shall be RoHS Compliant

TCL, LLC CLAIMS PROPRIETARY RIGHTS IN THE MATERIAL HEREIN DISCLOSED. IT IS SUPPLIED WITHOUT PREJUDICE TO ANY PATENT RIGHTS OF TCL AND MAY NOT BE REPRODUCED OR USED TO MANUFACTURE ANYTHING SHOWN THEREIN WITHOUT WRITTEN PERMISSION FROM TCL.				TOLERANCES (EXCEPT AS NOTED) DECIMAL .XX ± .25 .XXX ± .10 FRACTIONAL ± 1/16 ANGULAR ± 1°		W132 N10611 Grant Drive Germantown, WI 53022 V1K, Enclosed, TYPE 1 2 Amps to 12 Amps	
G	4030, Combine V1K Drawings	6/22/17	DSW	DRN BY DSW	DATE 4/26/17	SCALE TO FIT	SIZE 102318DG
NO	REVISION	DATE	BY	APRVD:	DATE	SCALE	SIZE