

4

3

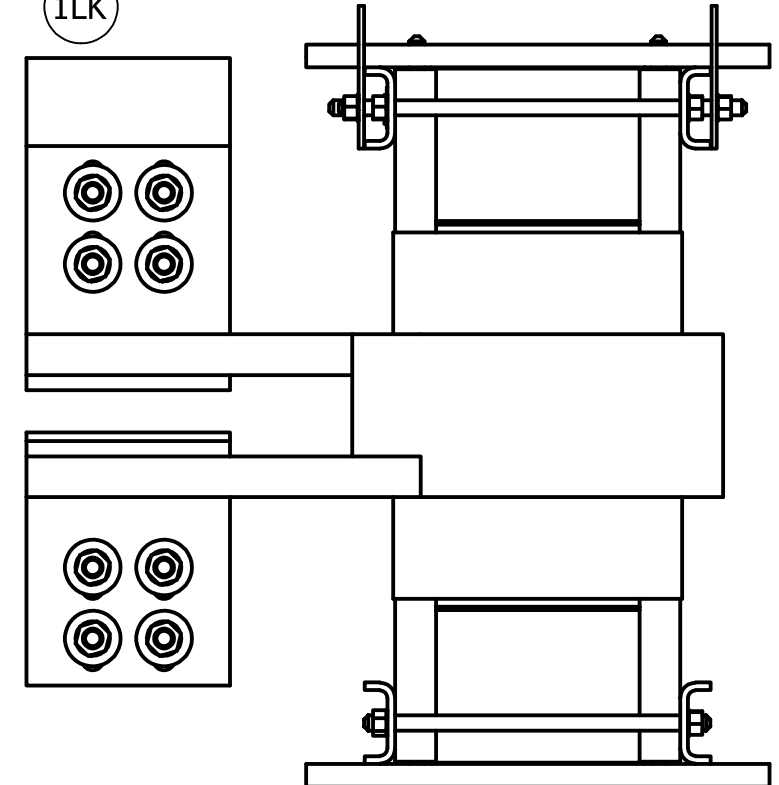
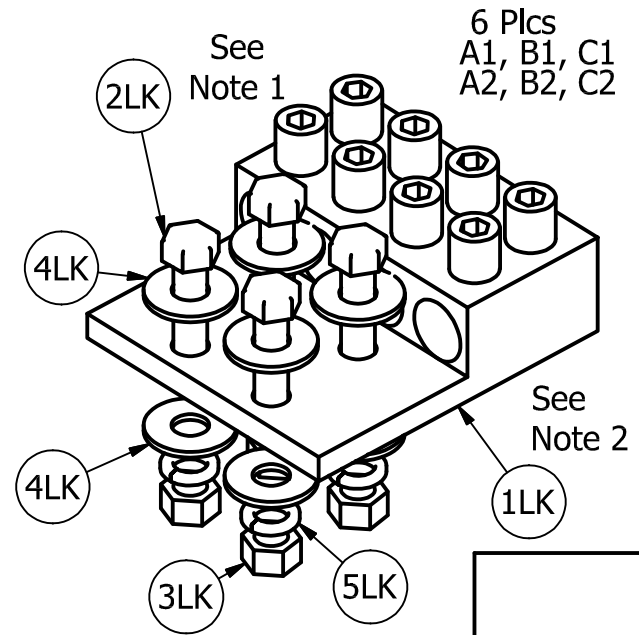
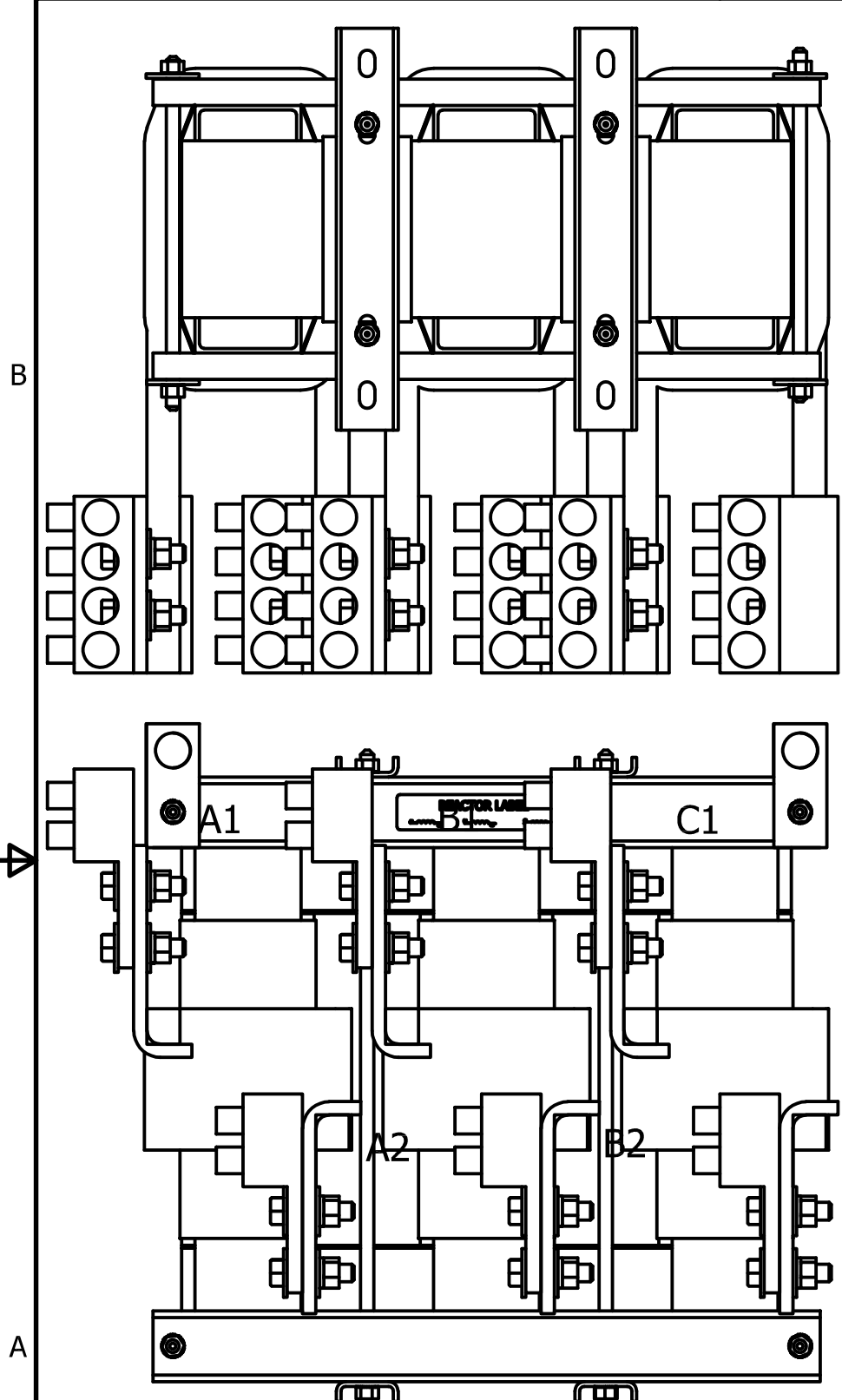
2

1

Parts List			
TCI Part #	Description	Quantity	Item #
24874	Lug Four 600 kcmil	6	1LK
10251	Hex Hd Bolt 1/2-13 X 2 In	24	2LK
1610	Nut 1/2-13	24	3LK
1512	Flat Washer 1/2"	48	4LK
1511	Split Lock Washer	24	5LK

Table T4A4-600N				
Item ID	Conductor Range	Bolt/Stud Size	Hex Size	Tightening Torque
T4A4-600N	600kcmil-2AWG	1/2	1/2	500 in-lb (56.5 N-m)

* T4A4-600N
 * CSA Certified.
 * UL 486A/B Listed, UL File E6207
 * Must be mounted with a minimum of 4 bolts



Follow NEC guidelines to determine acceptable wire ampacity requirements.

Notes:
 1.) Torque bolt (Item #2LK) to 450 in-lb (50.8 N-m).
 2.) To prevent lug from rotating place lug on underside of tab as shown.

				TOLERANCES (EXCEPT AS NOTED)		TCI W132 N10611 Grant Drive Germantown, WI 53022
				DECIMAL		
				.XX ± .25		Lug Kit, 4-600MCM-2
				.XXX ± .10		
				FRACTIONAL		DRN. BY: JRN
				± 1/16		DATE: 9/01/17
				ANGULAR		LK17-Dwg
				± 1°		SCALE:
NO	REVISION	DATE	BY			APRVD:
						SIZE: B
						SHT.1 OF 1

4

3

2

1