

4

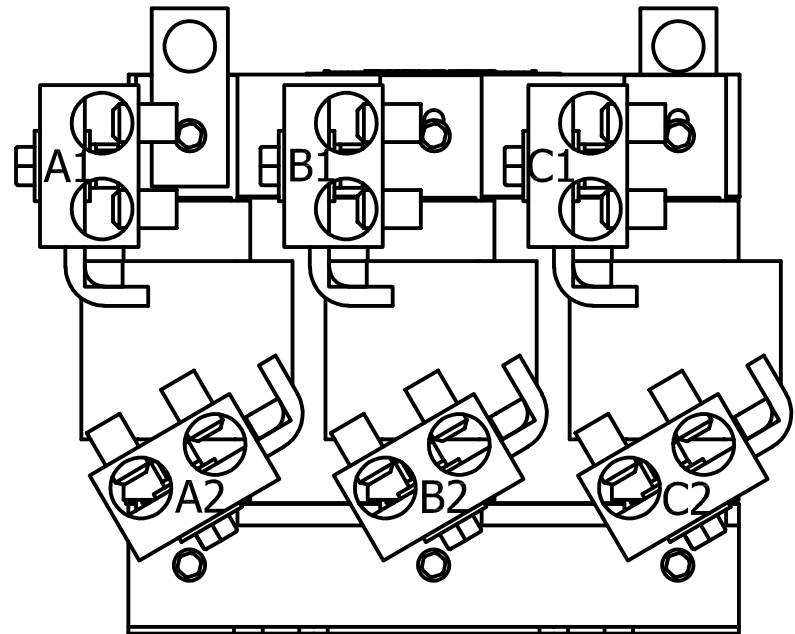
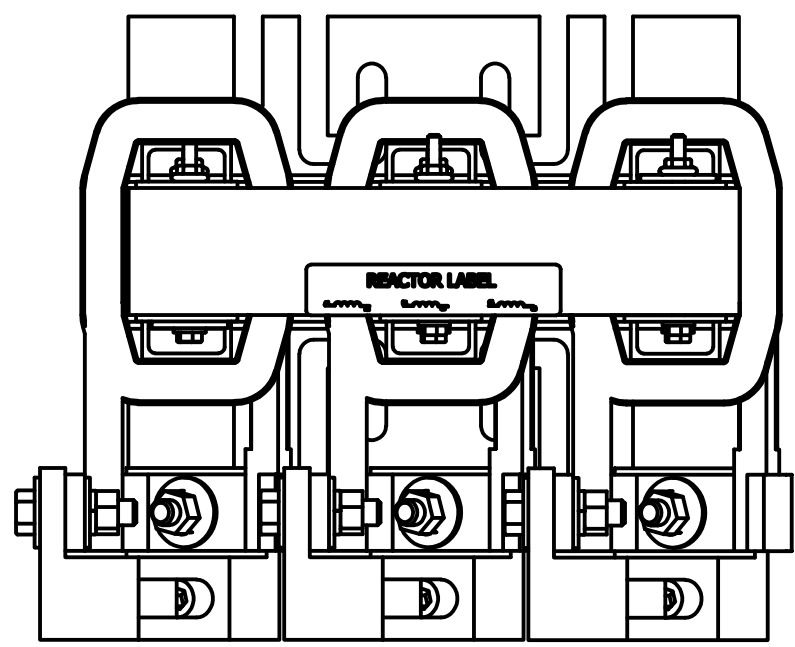
3

2

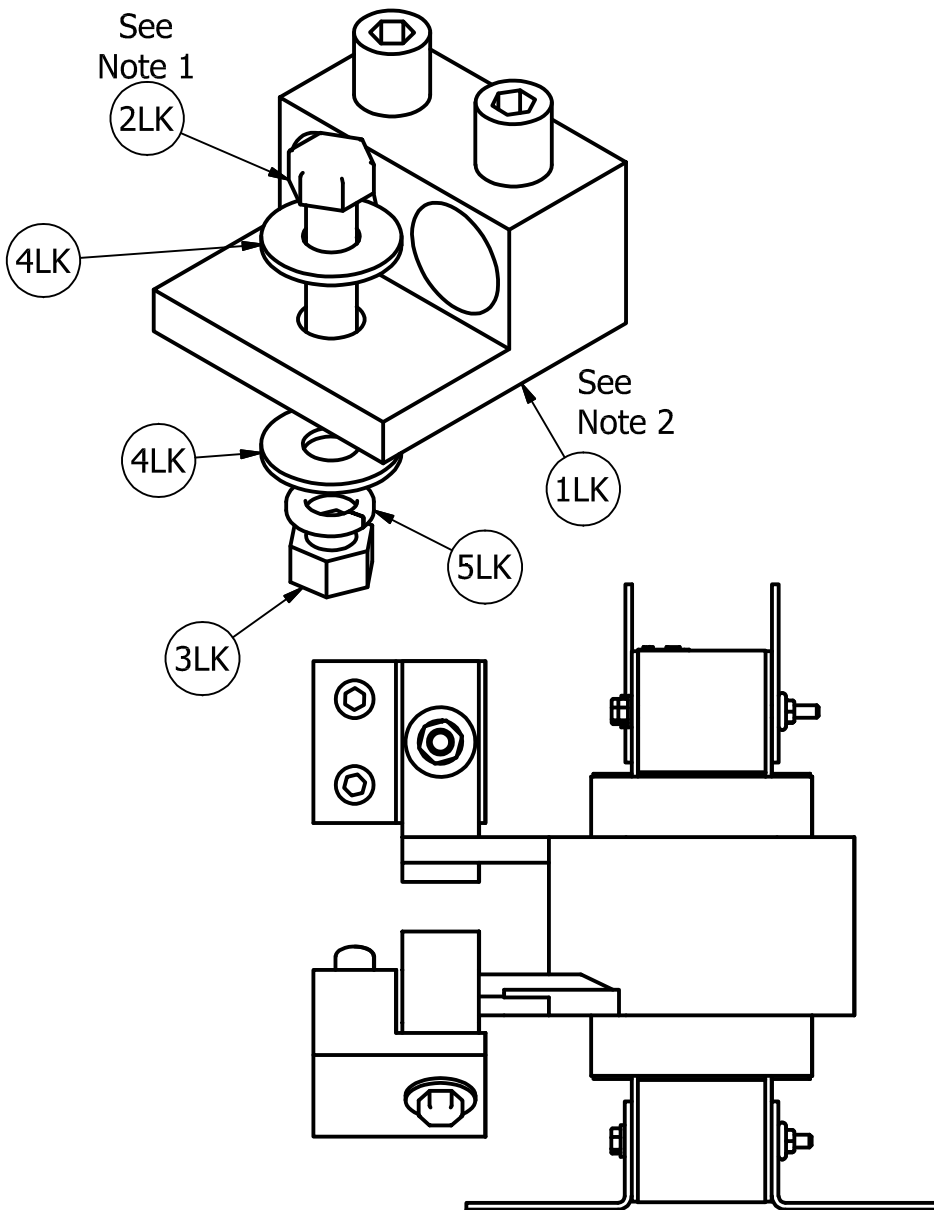
1

Parts List			
TCI Part #	Description	Quantity	Item #
21295	Lug Two 800 kcmil	6	1LK
10251	Hex Hd Bolt 1/2-13 X 2 In	6	2LK
1610	Nut 1/2-13	6	3LK
1512	Flat Washer 1/2"	12	4LK
1511	Split Lock Washer	6	5LK

Table AU-800				
Item ID	Conductor Range	Bolt/Stud Size	Hex Size	Tightening Torque
AU-800	800kcmil-300kcmil	1/2	1/2	500 in-lb (56.5 N-m)



6 Plcs  
A1, B1, C1  
A2, B2, C2



\* AU-800  
\* CSA Certified.  
\* UL 486A/B Listed, UL File E6207

Notes:  
1.) Torque bolt (Item #2LK) to 450 in-lb (50.8 N-m).  
2.) To prevent lug from rotating place lug on underside of tab as shown.

Follow NEC guidelines to determine acceptable wire ampacity requirements.

				TOLERANCES (EXCEPT AS NOTED)	<b>TCI</b> W132 N10611 Grant Drive Germantown, WI 53022
				DECIMAL	
				.XX ± .25 .XXX ± .10	Lug Kit, 2-800MCM-300
				FRACTIONAL ± 1/16	
				ANGULAR ± 1°	DRN. BY: JRN
NO	REVISION	DATE	BY	SCALE:	DATE: 8/31/17
					APRVD:
					SIZE: B
					LK15-Dwg
					SHT.1 OF 1

4

3

2

1