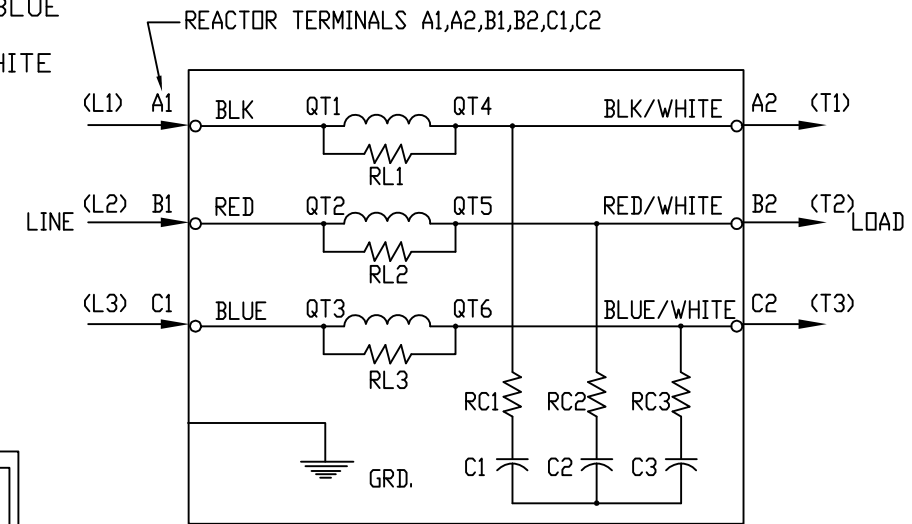
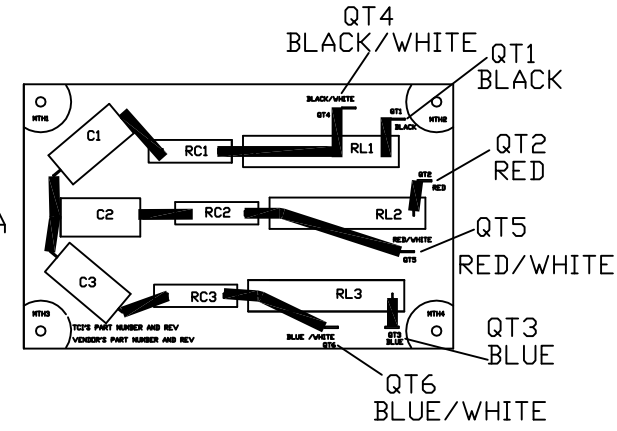
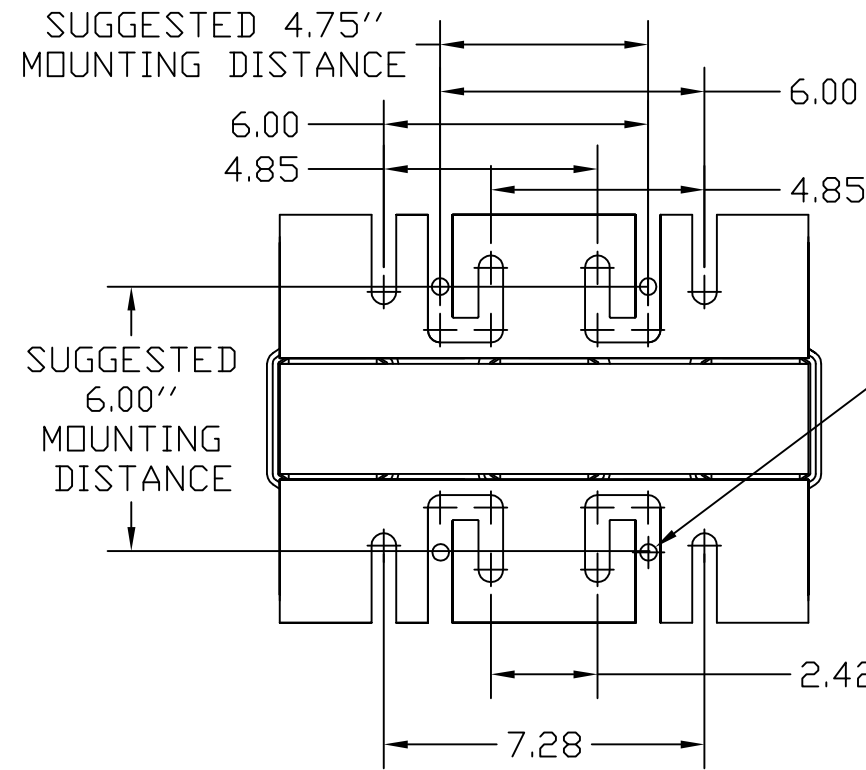
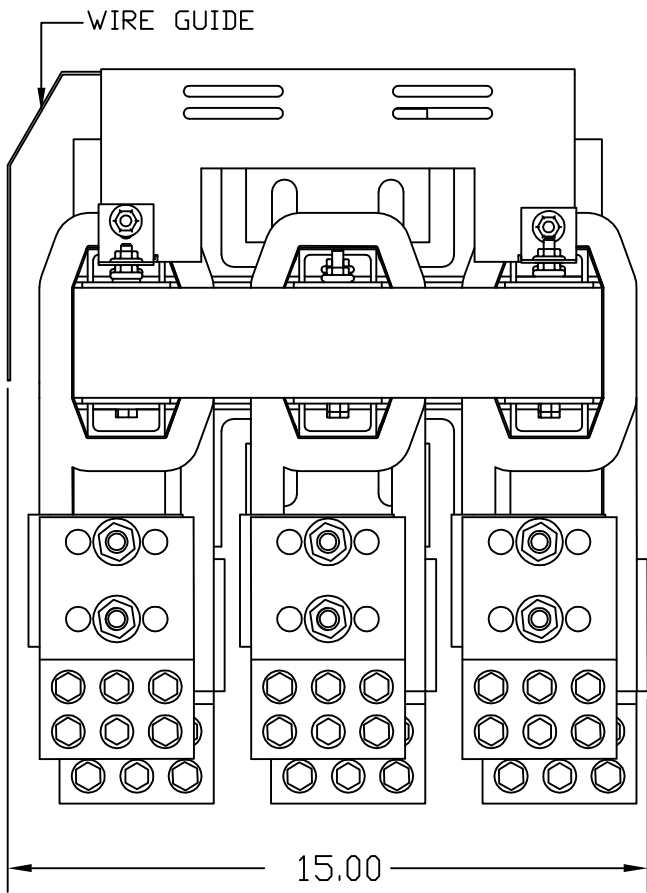
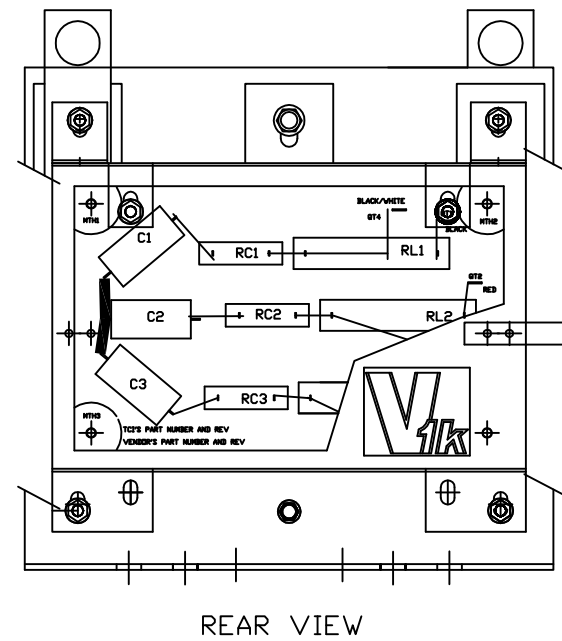
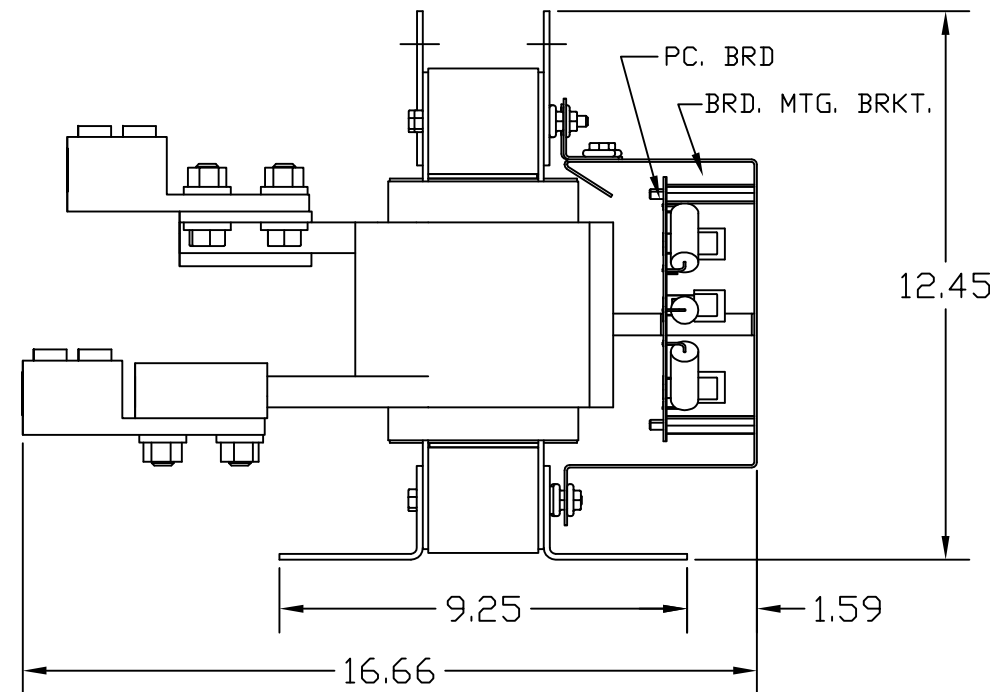
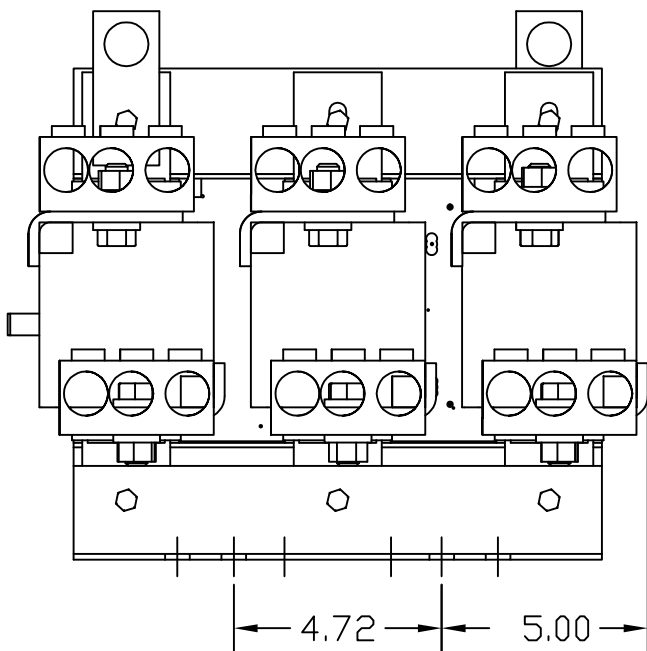


"SEE V1K INSTALLATION GUIDE FOR TERMINAL WIRE SIZE AND TORQUE"

SPECIFICATIONS:	
AMP.	750
VOLT	240-600
PHASE	3
HZ	60
WEIGHT, LBS.	135
OPEN VERSION	



REACTOR AND BOARD ASSEMBLY CONNECTIONS



REAR VIEW

TOLERANCE UNLESS OTHERWISE NOTED:	
MOUNTING	+/- .06
OVERALL	+/- .12

CUSTOMER IS RESPONSIBLE FOR INSTALLATION TO MEET ALL NATIONAL AND LOCAL ELECTRICAL CODES.

TCl, LLC CLAIMS PROPRIETARY RIGHTS IN THE MATERIAL HEREIN DISCLOSED. IT IS SUPPLIED WITHOUT PREJUDICE TO ANY PATENT RIGHTS OF TCl AND MAY NOT BE REPRODUCED OR USED TO MANUFACTURE ANYTHING SHOWN THEREIN WITHOUT WRITTEN PERMISSION FROM TCl.

NO	REVISION	DATE	BY
G	3216 ADD SEE GUIDE	11/4/14	DSW

TCl W132 N10611 GRANT DRIVE
GERMANTOWN, WI 53022

V1K750A00EX, OUTPUT FILTER
750 AMP, OPEN VERSION

EXTENDED LENGTH APPLICATIONS

DRN. BY	RJC	DATE	5/20/05	DWG. NO.	102720DG
SCALE	NONE	SIZE	B	SHT. 1 OF 1	

TOLERANCES (EXCEPT AS NOTED)	
DECIMAL	.XX ± .03 .XXX ± .01
FRACTIONAL	± 1/32
ANGULAR	± 1/2°