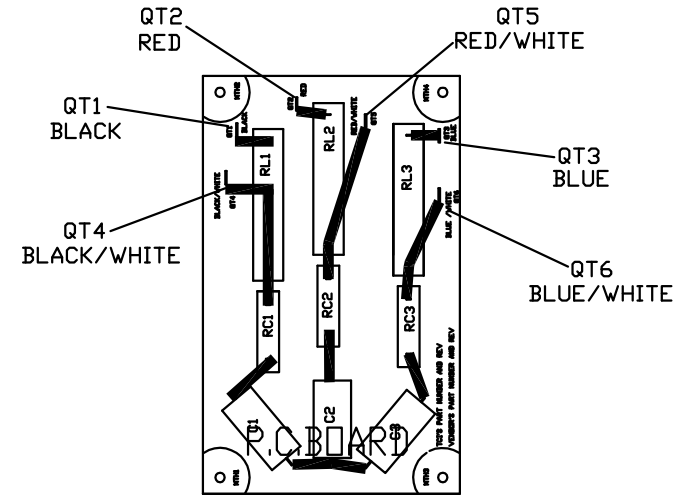
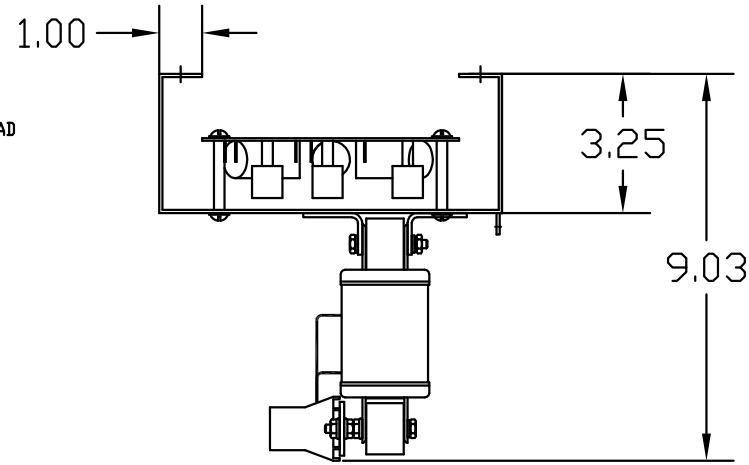
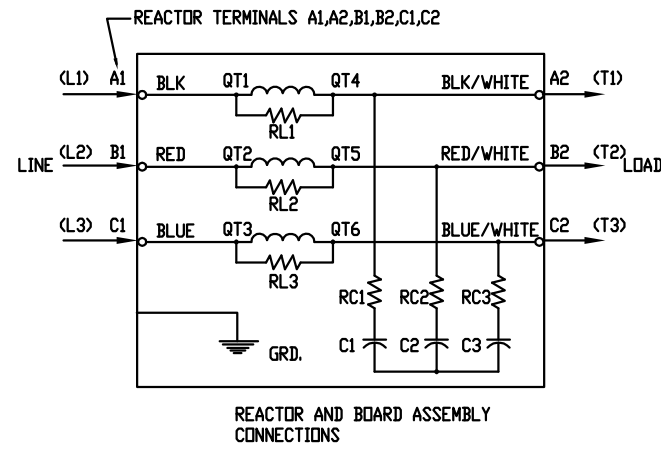
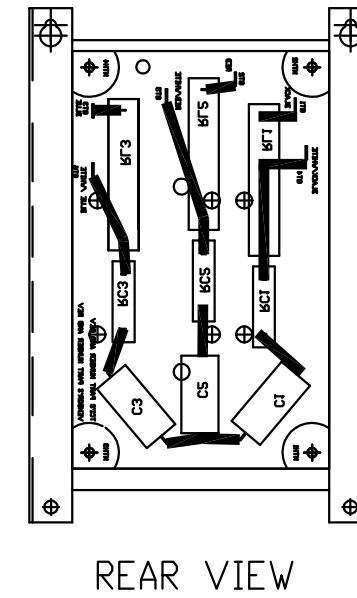
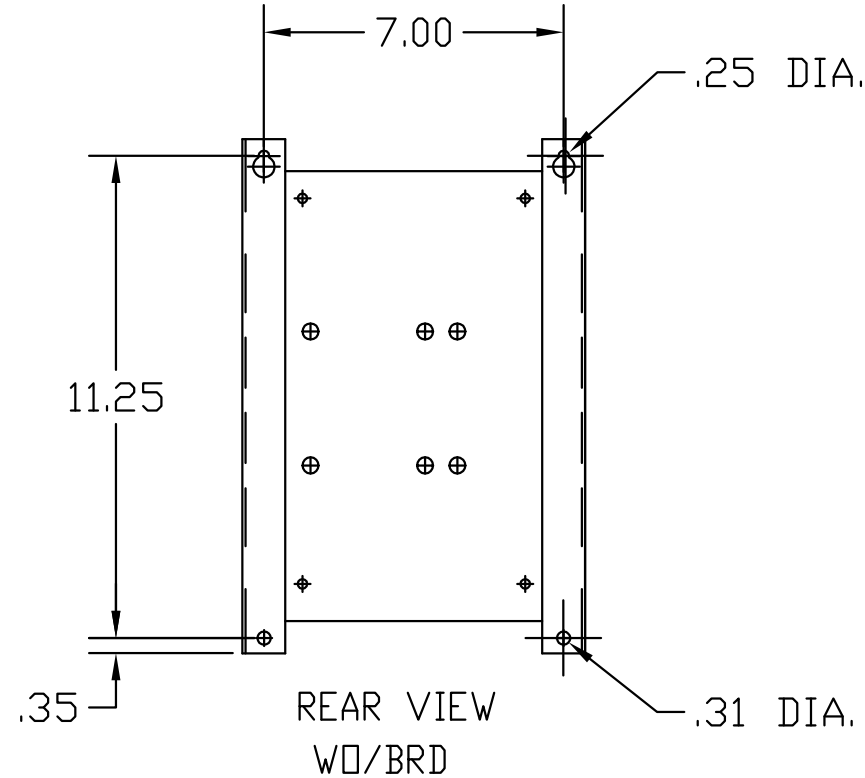
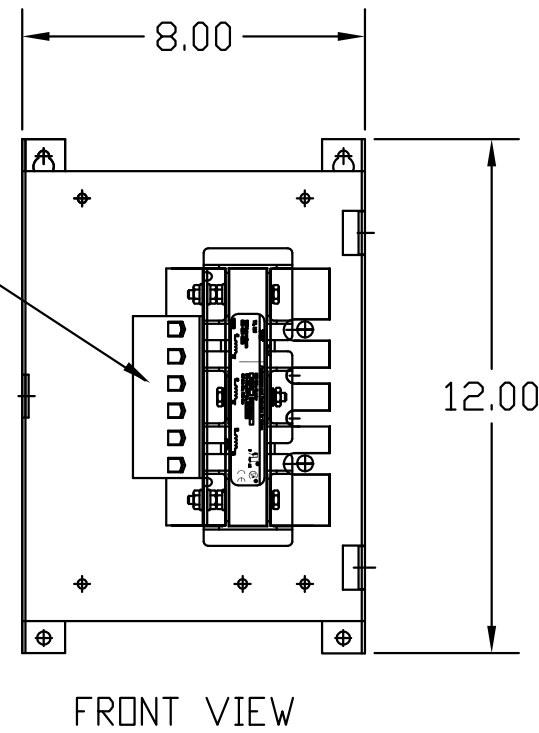
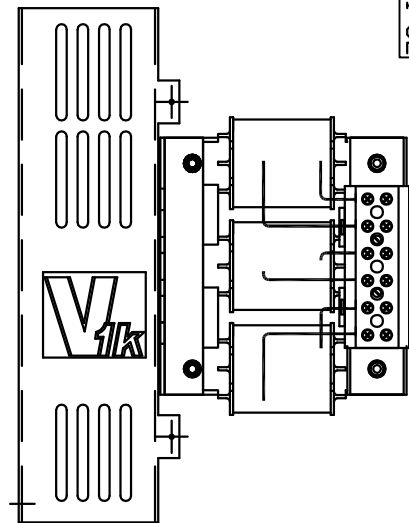


"SEE V1K INSTALLATION GUIDE FOR TERMINAL WIRE SIZE AND TORQUE"



SPECIFICATIONS:	
AMP.	55
VOLT	480
PHASE	3
HZ	60
WEIGHT, LBS.	16
OPEN VERSION	

MARKINGS ON TERMINAL BLOCK  
A1,A2,B1,B2,C1,C2 FOR REFERENCE ONLY.



TOLERANCE UNLESS OTHERWISE NOTED:	
MOUNTING	+/- .06
OVERALL	+/- .12

CUSTOMER IS RESPONSIBLE FOR INSTALLATION TO MEET ALL NATIONAL AND LOCAL ELECTRICAL CODES.

TCL, LLC CLAIMS PROPRIETARY RIGHTS IN THE MATERIAL HEREIN DISCLOSED. IT IS SUPPLIED WITHOUT PREJUDICE TO ANY PATENT RIGHTS OF TCL AND MAY NOT BE REPRODUCED OR USED TO MANUFACTURE ANYTHING SHOWN THEREIN WITHOUT WRITTEN PERMISSION FROM TCL.

				TOLERANCES (EXCEPT AS NOTED)
				DECIMAL
				.XX ± .03
				.XXX ± .01
				FRACTIONAL
				± 1/32
				ANGULAR
				± 1/2°
F	3216 ADD SEE GUIDE	12/9/14	DSW	
NO	REVISION	DATE	BY	



W132 N10611 GRANT DRIVE  
GERMANTOWN, WI 53022

V1K55A00EX, OUTPUT FILTER

55 AMP, OPEN VERSION  
EXTENDED LGTH. APPLICATIONS

DRN. BY	RJC	DATE	4/12/05
SCALE	NONE	SIZE	B

DWG. NO.	102610DG
SHT. 1	OF 1