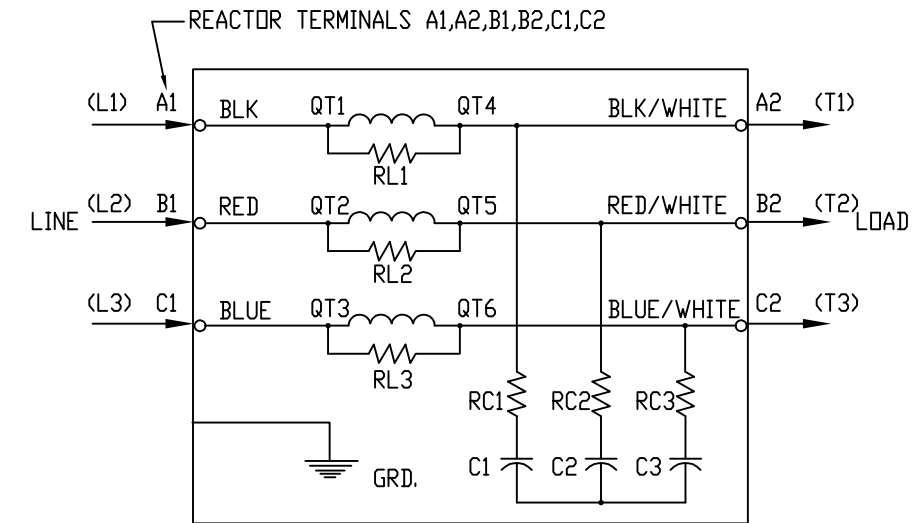
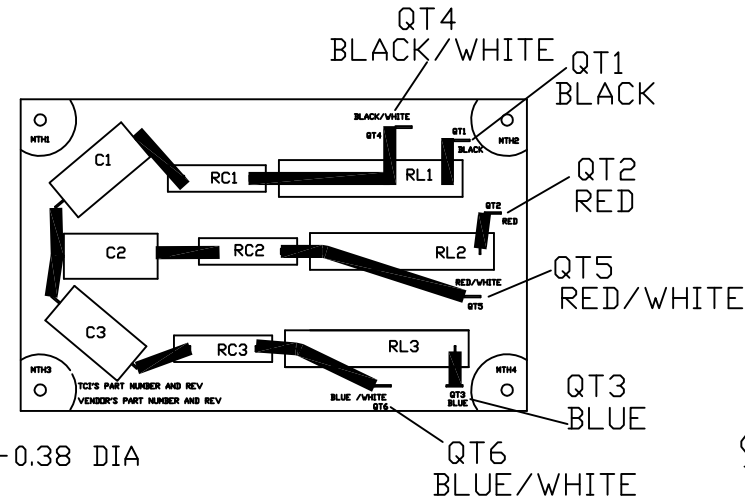
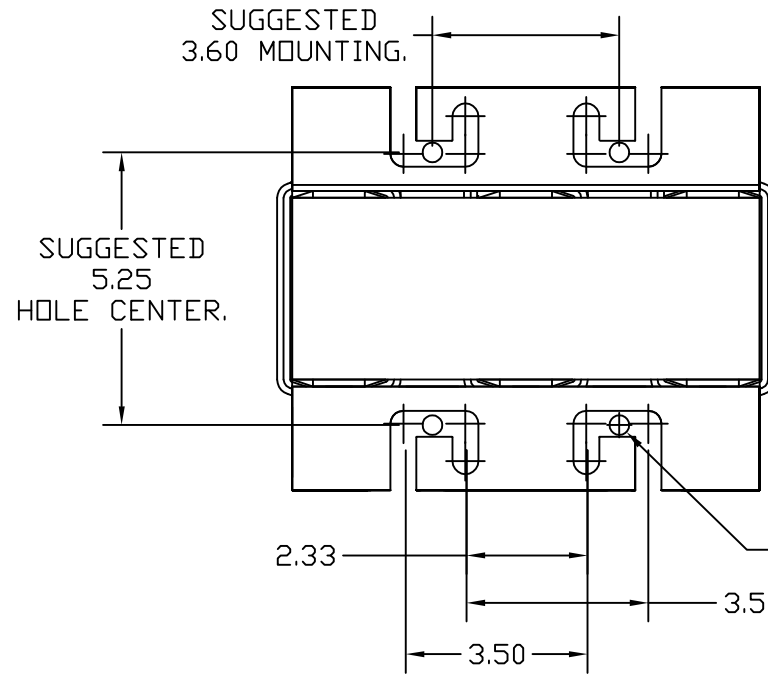
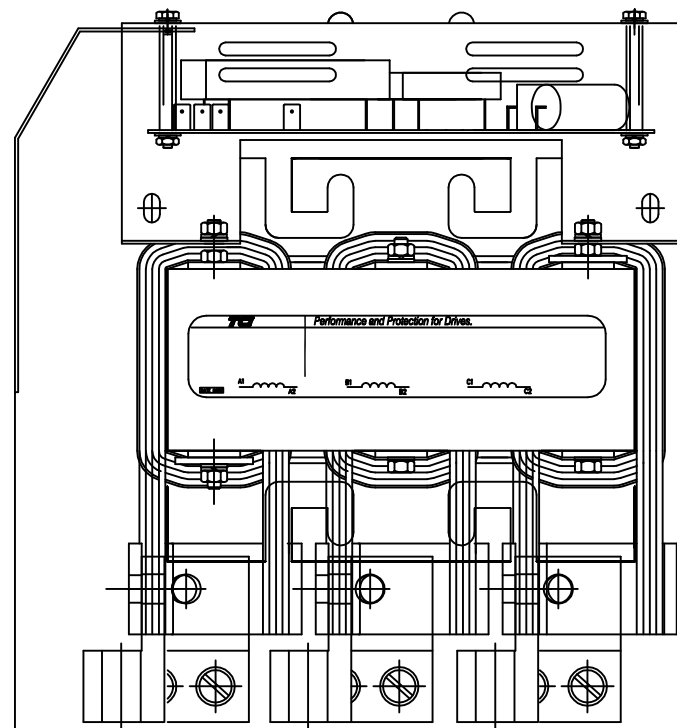
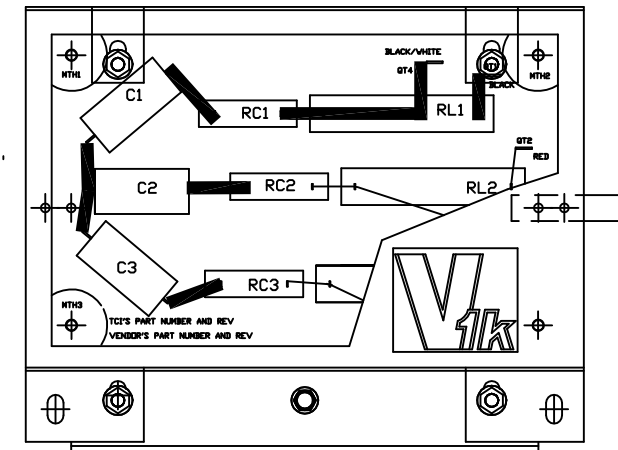
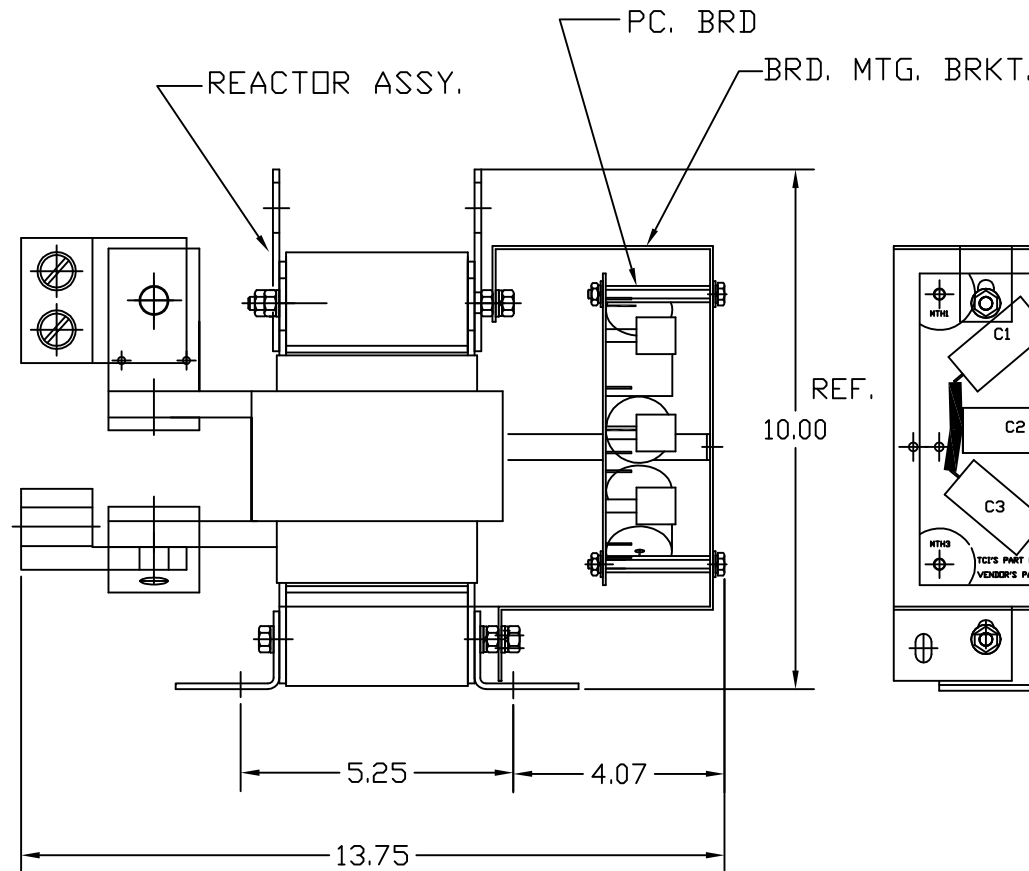
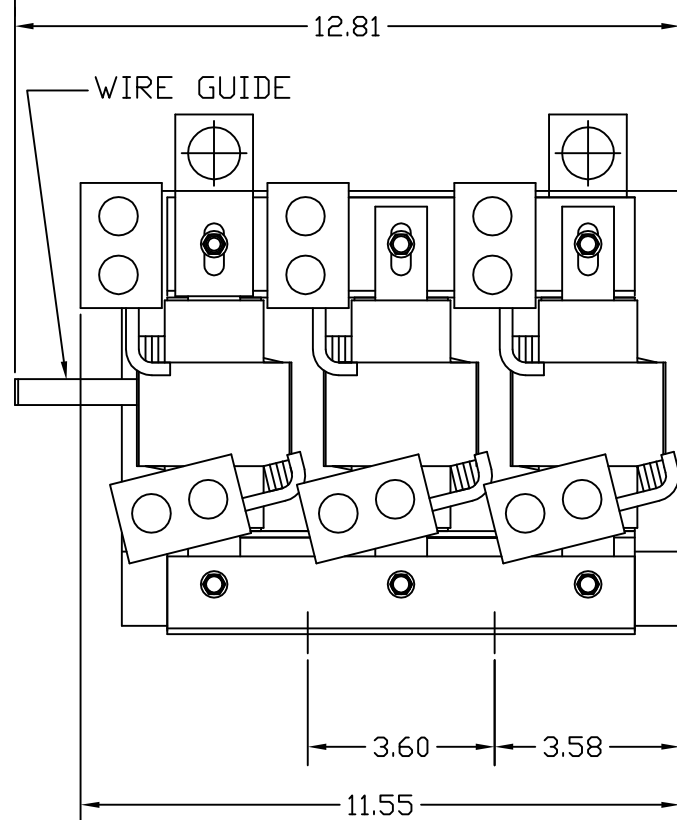


"SEE V1K INSTALLATION GUIDE FOR TERMINAL WIRE SIZE AND TORQUE"

SPECIFICATIONS:	
AMP.	480
VOLT	240-600
PHASE	3
HZ	60
WEIGHT, LBS.	100
OPEN VERSION	



REACTOR AND BOARD ASSEMBLY CONNECTIONS



REAR VIEW

TOLERANCE UNLESS OTHERWISE NOTED:
 MOUNTING +/- .06
 OVERALL +/- .12

CUSTOMER IS RESPONSIBLE FOR INSTALLATION TO MEET ALL NATIONAL AND LOCAL ELECTRICAL CODES.

TCl, LLC CLAIMS PROPRIETARY RIGHTS IN THE MATERIAL HEREIN DISCLOSED. IT IS SUPPLIED WITHOUT PREJUDICE TO ANY PATENT RIGHTS OF TCl AND MAY NOT BE REPRODUCED OR USED TO MANUFACTURE ANYTHING SHOWN THEREIN WITHOUT WRITTEN PERMISSION FROM TCl.

				TOLERANCES (EXCEPT AS NOTED)
				DECIMAL
				.XX ± .03
				.XXX ± .01
				FRACTIONAL
				± 1/32
				ANGULAR
				± 1/2°
3216	ADD SEE GUIDE	11/4/14	DSW	
NO	REVISION	DATE	BY	

TCl W132 N10611 GRANT DRIVE GERMANTOWN, WI 53022

V1K480A00EX, OUTPUT FILTER
 480 AMP, OPEN VERSION

EXTENDED LENGTH APPLICATIONS

DRN. BY	RJC	DATE	5/20/05	DWG. NO.	102718DG
SCALE	NONE	SIZE	B		SHT. 1 OF 1