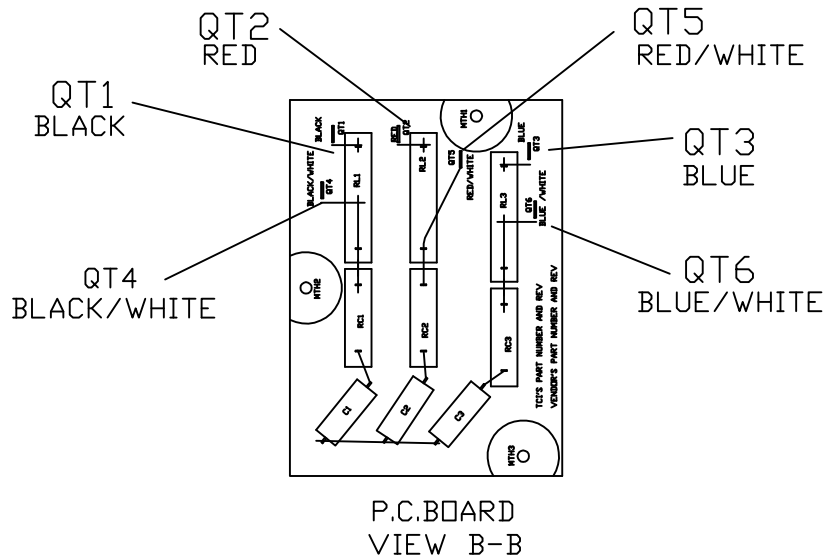
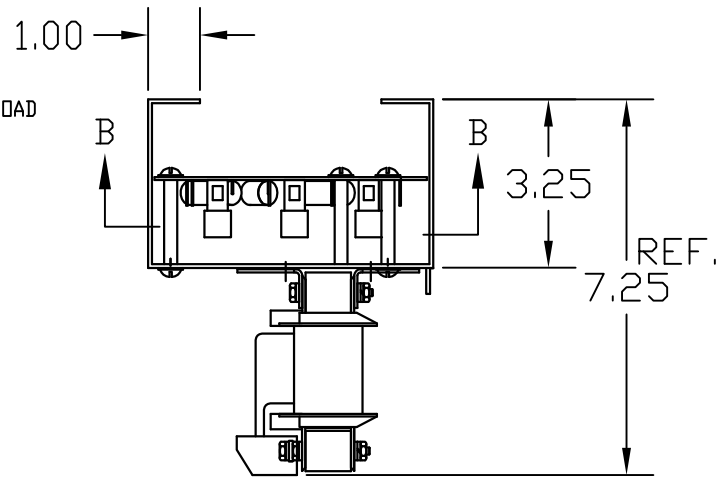
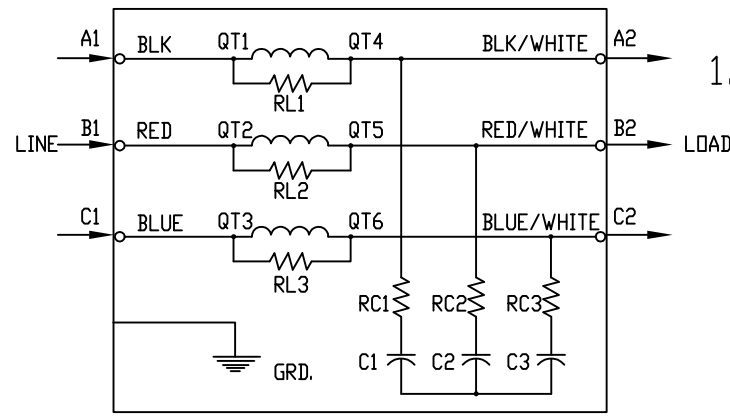
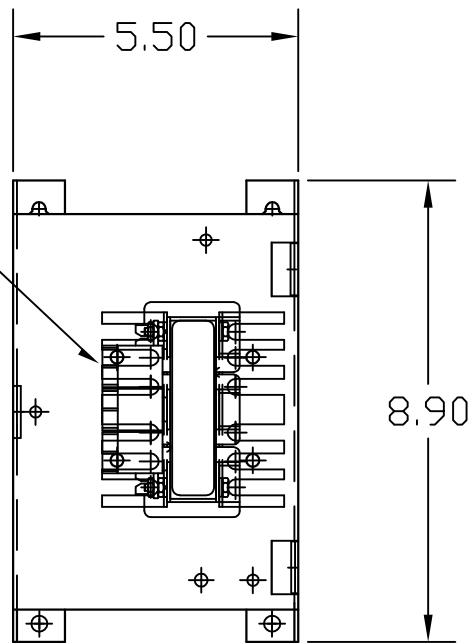
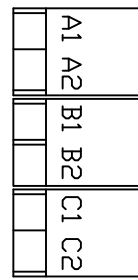
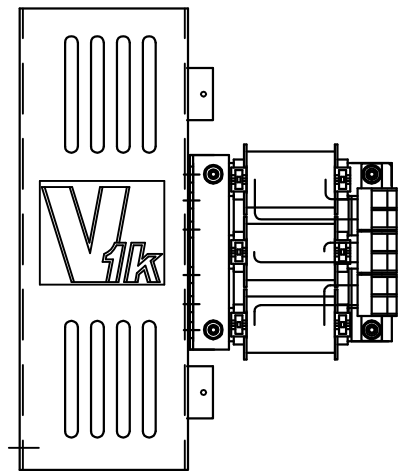


"SEE V1K INSTALLATION GUIDE FOR TERMINAL WIRE SIZE AND TORQUE"

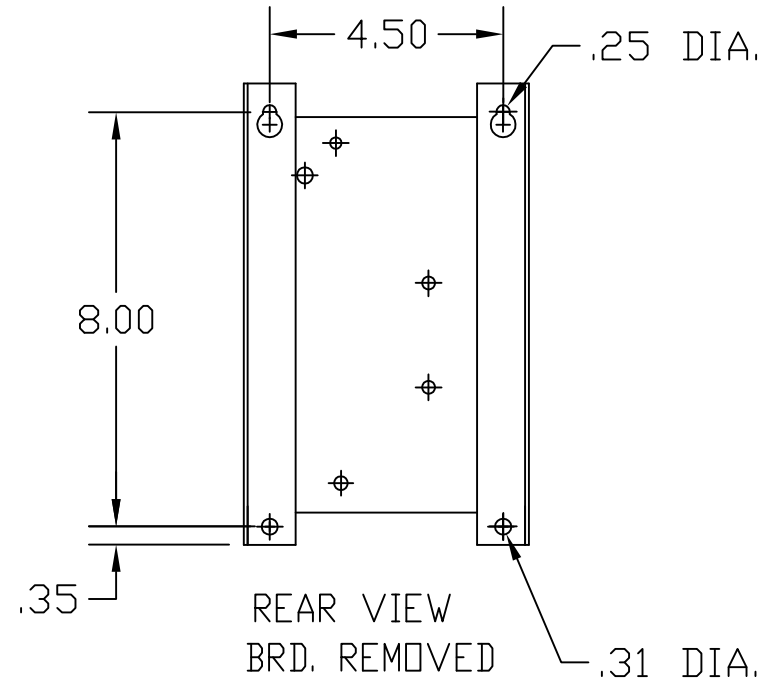
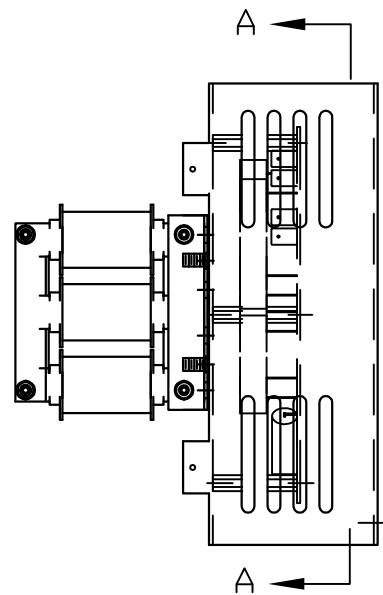


| SPECIFICATIONS: | |
|-----------------|---------|
| AMP. | 3 |
| VOLT | 240-600 |
| PHASE | 3 |
| HZ | 60 |
| WEIGHT, LBS. | 8 |
| OPEN VERSION | |

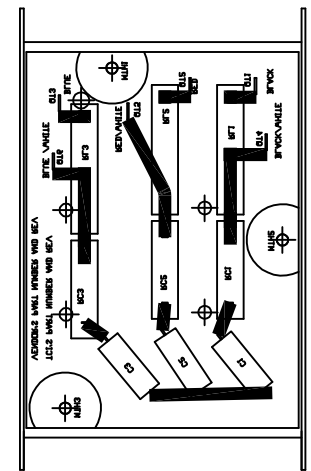
MARKINGS ON TERMINAL BLOCK
A1,A2,B1,B2,C1,C2 FOR REFERENCE ONLY.



FRONT VIEW



REAR VIEW
BRD. REMOVED



SECTION A-A

| | |
|-----------------------------------|---------|
| TOLERANCE UNLESS OTHERWISE NOTED: | |
| MOUNTING | +/- .06 |
| OVERALL | +/- .12 |

CUSTOMER IS RESPONSIBLE FOR INSTALLATION TO MEET ALL NATIONAL AND LOCAL ELECTRICAL CODES.

TCl, LLC CLAIMS PROPRIETARY RIGHTS IN THE MATERIAL HEREIN DISCLOSED. IT IS SUPPLIED WITHOUT PREJUDICE TO ANY PATENT RIGHTS OF TCl AND MAY NOT BE REPRODUCED OR USED TO MANUFACTURE ANYTHING SHOWN THEREIN WITHOUT WRITTEN PERMISSION FROM TCl.

| | | | | |
|----|--------------------|---------|-----|------------------------------|
| | | | | TOLERANCES (EXCEPT AS NOTED) |
| | | | | DECIMAL |
| | | | | .XX ± .03 |
| | | | | .XXX ± .01 |
| | | | | FRACTIONAL |
| | | | | ± 1/32 |
| | | | | ANGULAR |
| | | | | ± 1/2° |
| E | 3216 ADD SEE GUIDE | 12/9/14 | DSW | |
| NO | REVISION | DATE | BY | |

TCl W132 N10611 GRANT DRIVE
GERMANTOWN, WI 53022

V1K3A00EX, OUTPUT FILTER
3 AMP, OPEN VERSION
EXTENDED LGTH. APPLICATIONS

| | | | | | |
|---------|------|------|---------|-------------|----------|
| DRN. BY | RJC | DATE | 2/01/05 | DWG. NO. | 102601DG |
| SCALE | NONE | SIZE | B | SHT. 1 OF 1 | |