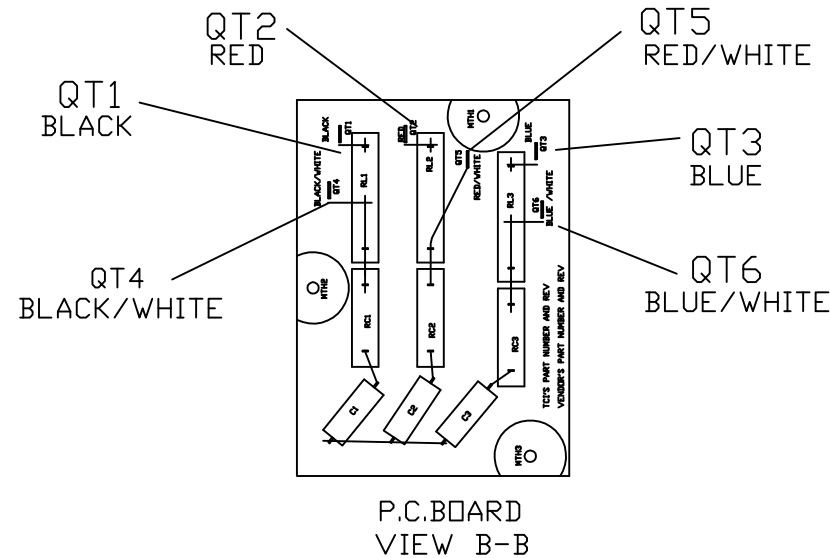
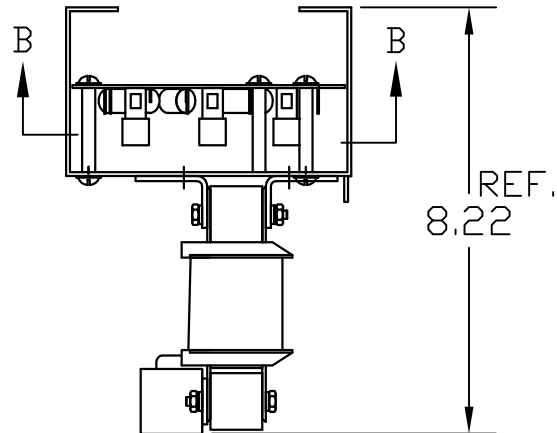
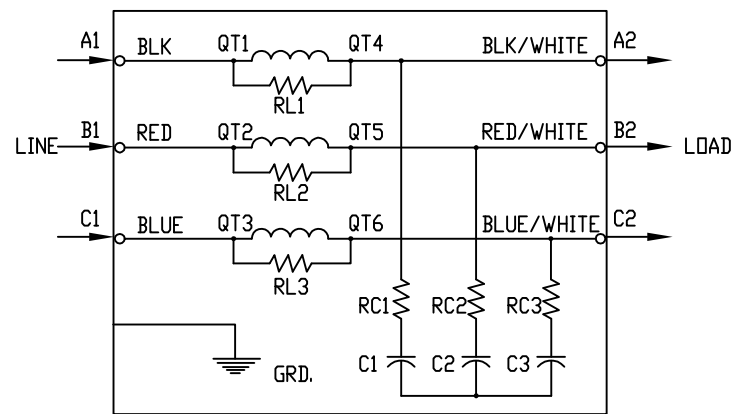
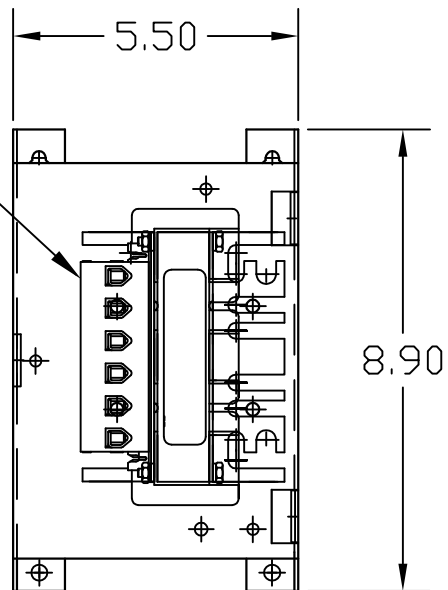
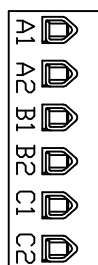
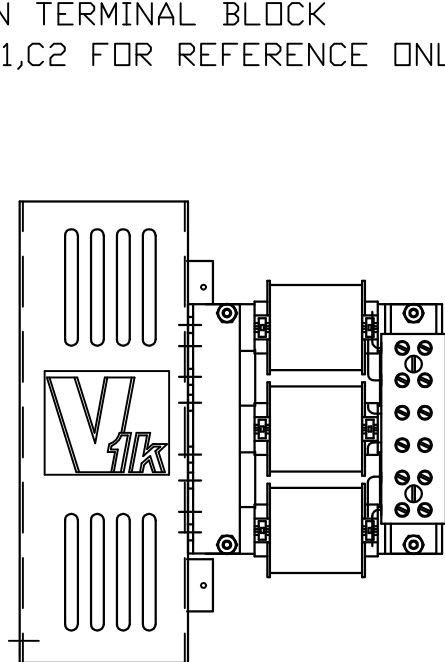


"SEE V1K INSTALLATION GUIDE FOR TERMINAL WIRE SIZE AND TORQUE"

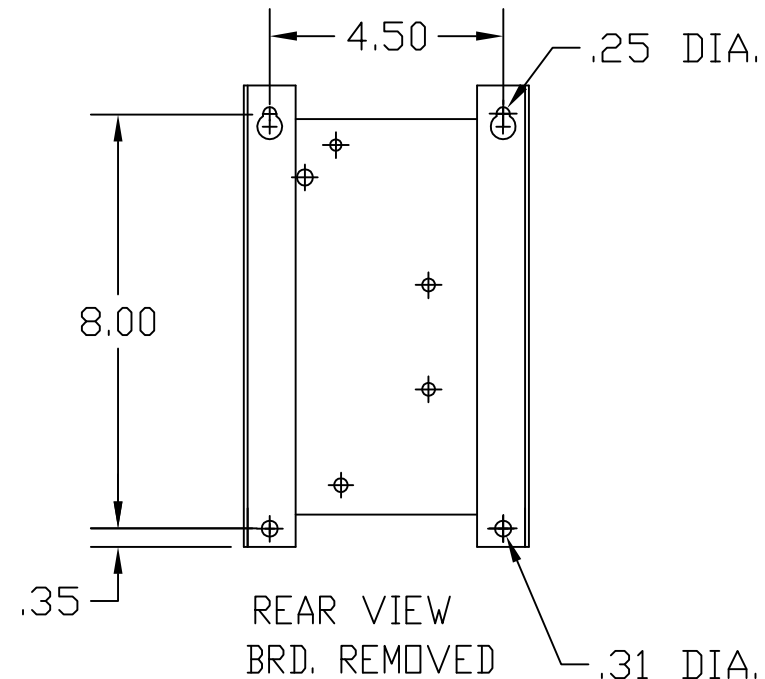
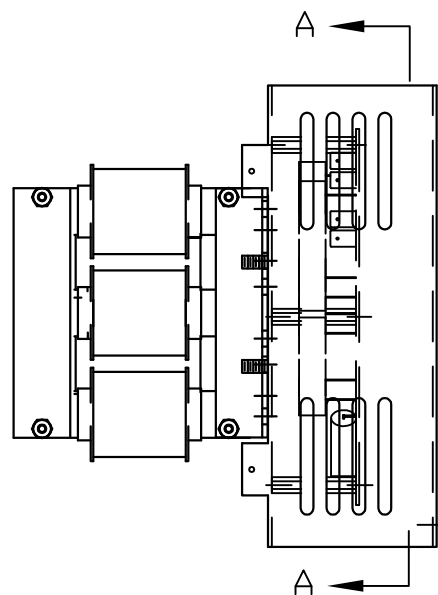


SPECIFICATIONS:	
AMP.	25
VOLT	240-600
PHASE	3
HZ	60
WEIGHT, LBS.	12
OPEN VERSION	

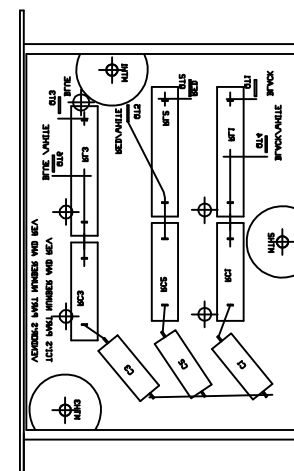
MARKINGS ON TERMINAL BLOCK
A1,A2,B1,B2,C1,C2 FOR REFERENCE ONLY.



FRONT VIEW



REAR VIEW
BRD. REMOVED



SECTION A-A

TOLERANCE UNLESS OTHERWISE NOTED:	
MOUNTING	+/- .06
OVERALL	+/- .12

CUSTOMER IS RESPONSIBLE FOR INSTALLATION TO MEET ALL NATIONAL AND LOCAL ELECTRICAL CODES.

TCI, LLC CLAIMS PROPRIETARY RIGHTS IN THE MATERIAL HEREIN DISCLOSED. IT IS SUPPLIED WITHOUT PREJUDICE TO ANY PATENT RIGHTS OF TCI AND MAY NOT BE REPRODUCED OR USED TO MANUFACTURE ANYTHING SHOWN THEREIN WITHOUT WRITTEN PERMISSION FROM TCI.				TOLERANCES (EXCEPT AS NOTED)
				DECIMAL
				.XX ± .03
				.XXX ± .01
				FRACTIONAL
				± 1/32
				ANGULAR
				± 1/2°
	3216 ADD SEE GUIDE	12/9/14	DSW	
NO	REVISION	DATE	BY	

TCI W132 N10611 GRANT DRIVE GERMANTOWN, WI 53022	
V1K25A00EX, OUTPUT FILTER 25 AMP, OPEN VERSION	
EXTENDED LGTH. APPLICATIONS	
DRN. BY RJC	DATE 2/01/05
SCALE NONE	SIZE B
DWG. NO. 102607DG	SHT. 1 OF 1