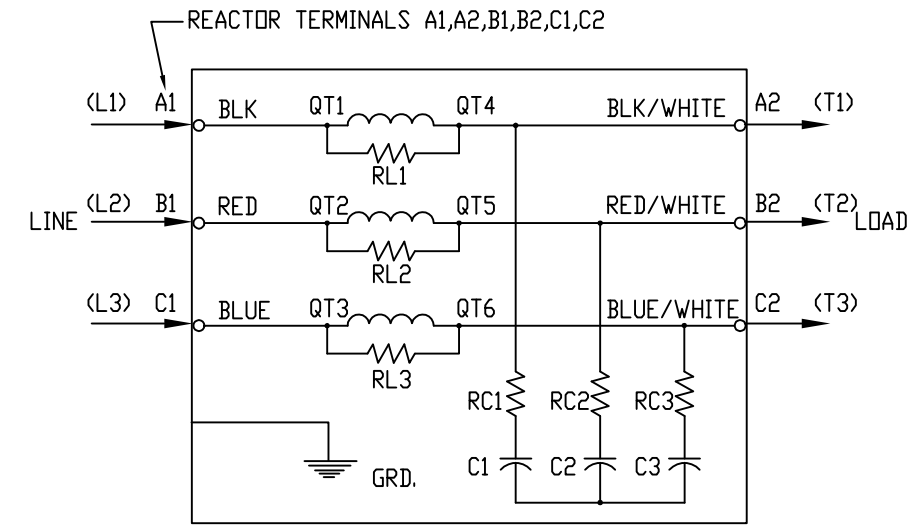
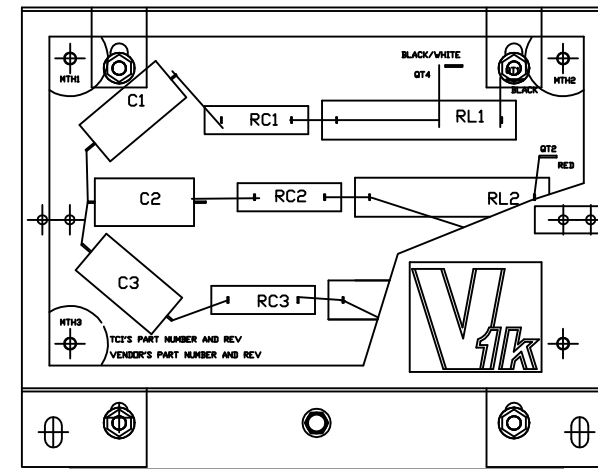
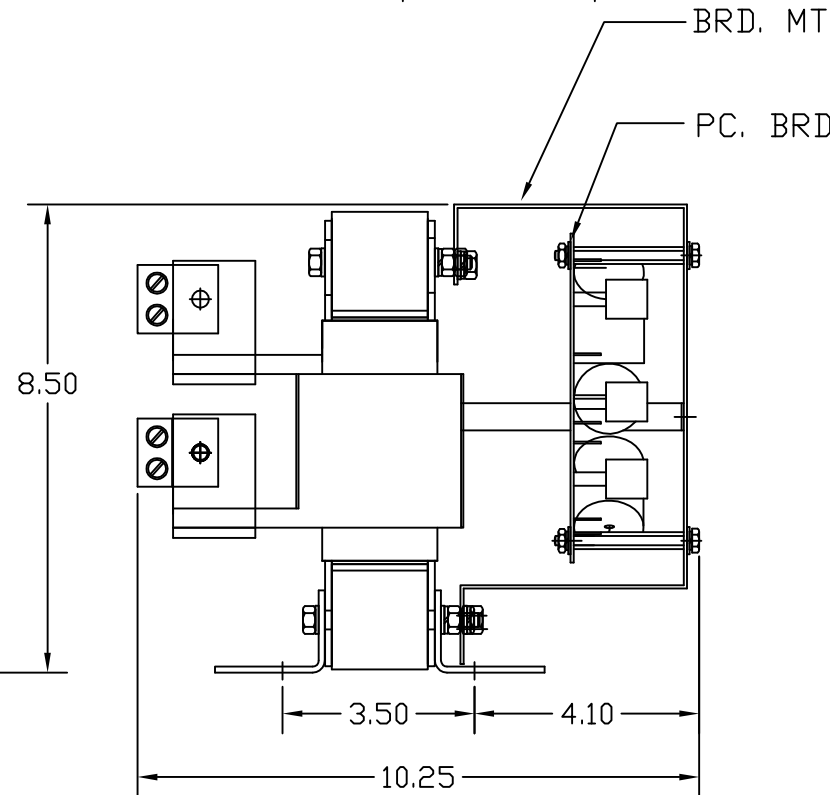
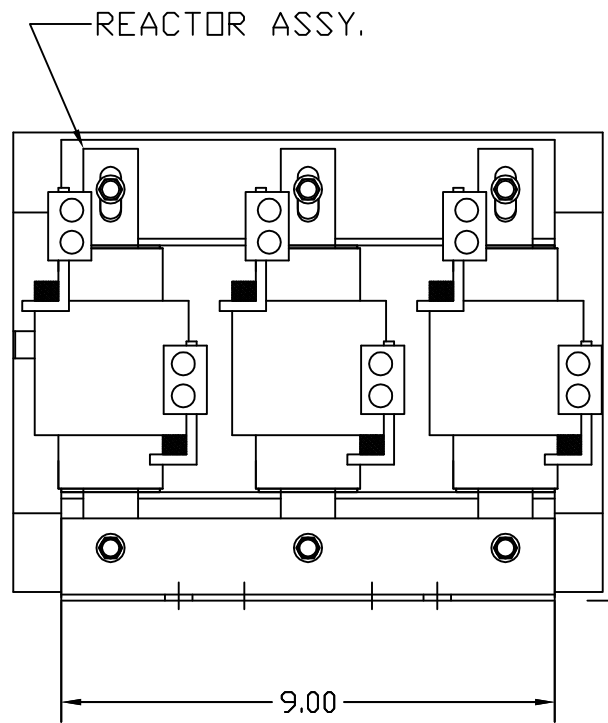
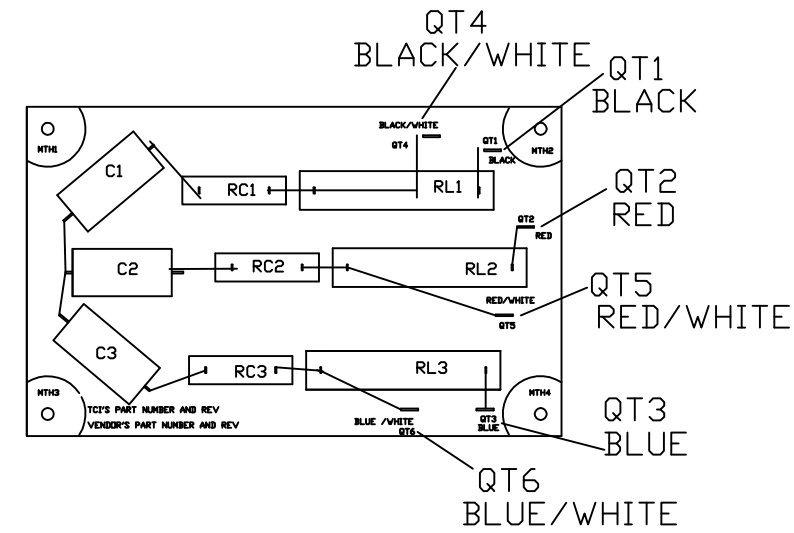
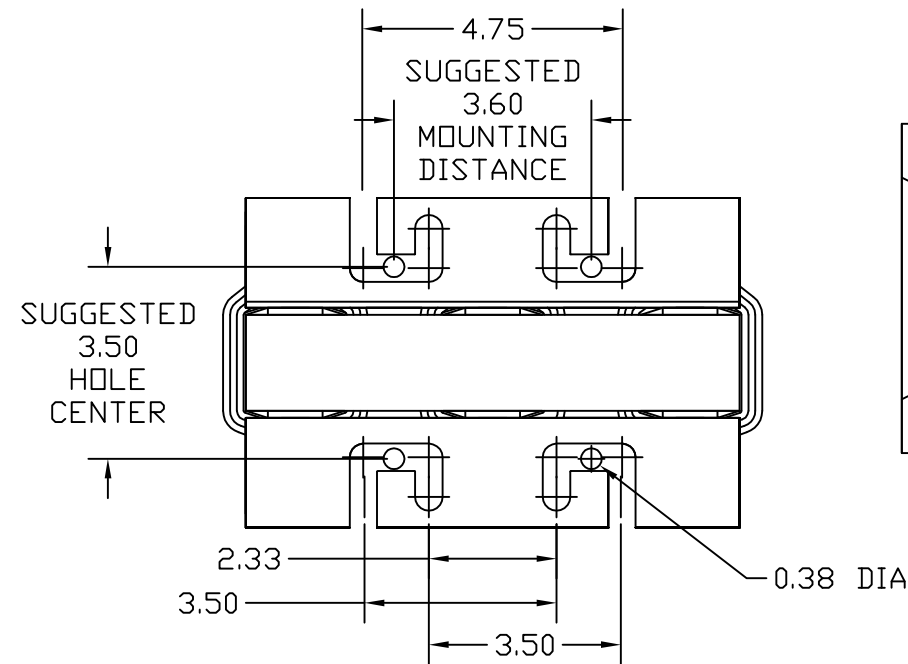
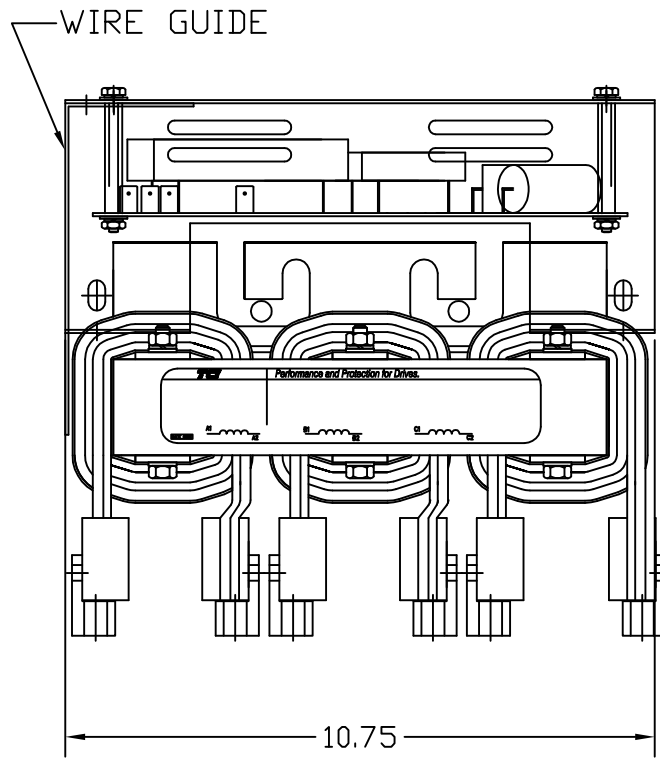


"SEE V1K INSTALLATION GUIDE FOR TERMINAL WIRE SIZE AND TORQUE"

SPECIFICATIONS:	
AMP.	250
VOLT	240-600
PHASE	3
HZ	60
WEIGHT, LBS.	65
OPEN VERSION	



REACTOR AND BOARD ASSEMBLY CONNECTIONS

TOLERANCE UNLESS OTHERWISE NOTED:	
MOUNTING	+/- .06
OVERALL	+/- .12

CUSTOMER IS RESPONSIBLE FOR INSTALLATION TO MEET ALL NATIONAL AND LOCAL ELECTRICAL CODES.

TCI, LLC CLAIMS PROPRIETARY RIGHTS IN THE MATERIAL HEREIN DISCLOSED. IT IS SUPPLIED WITHOUT PREJUDICE TO ANY PATENT RIGHTS OF TCI AND MAY NOT BE REPRODUCED OR USED TO MANUFACTURE ANYTHING SHOWN THEREIN WITHOUT WRITTEN PERMISSION FROM TCI.

				TOLERANCES (EXCEPT AS NOTED)
				DECIMAL
				.XX ± .03
				.XXX ± .01
				FRACTIONAL ± 1/32
				ANGULAR ± 1/2°
G	3216 ADD SEE GUIDE	10/31/14	DSW	
NO	REVISION	DATE	BY	

**TCI** W132 N10611 GRANT DRIVE GERMANTOWN, WI 53022

V1K250A00EX, OUTPUT FILTER  
250 AMP, OPEN VERSION

EXTENDED LENGTH APPLICATIONS

DRN. BY	RJC	DATE	5/20/05	DWG. NO.	102714DG
SCALE	NONE	SIZE	B		SHT. 1 OF 1