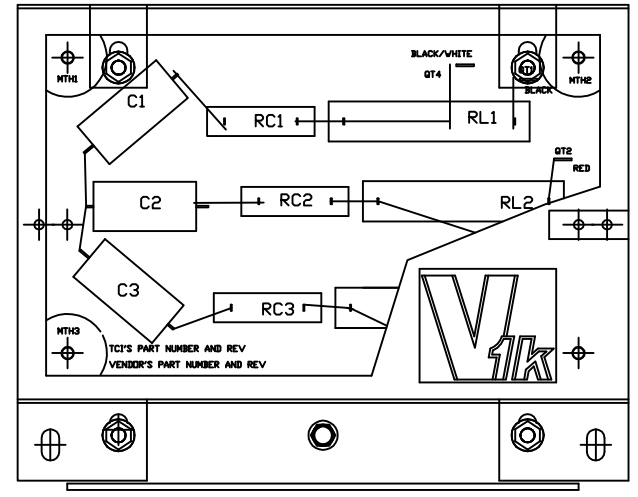
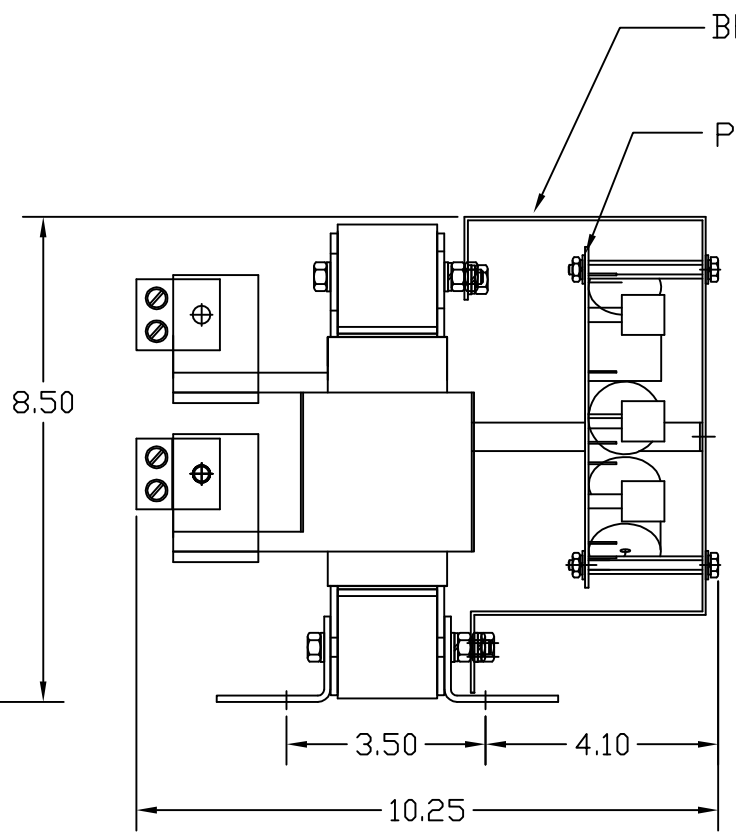
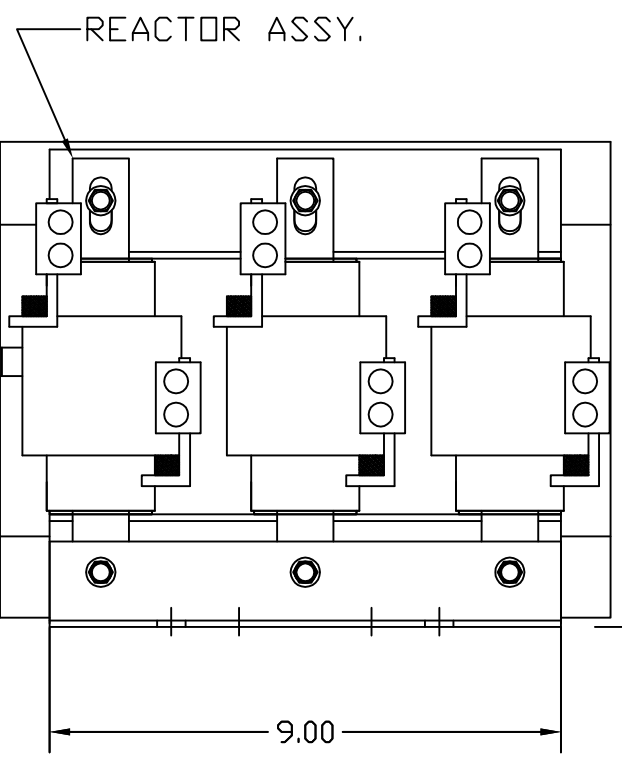
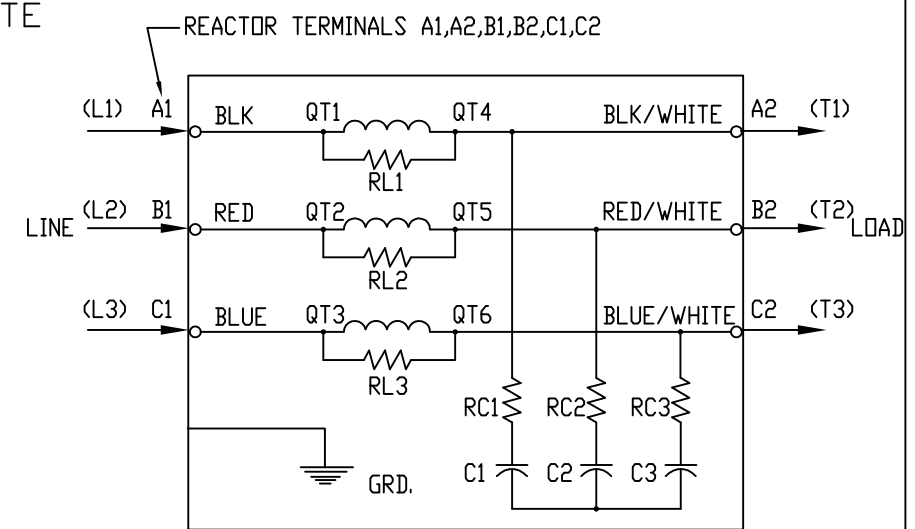
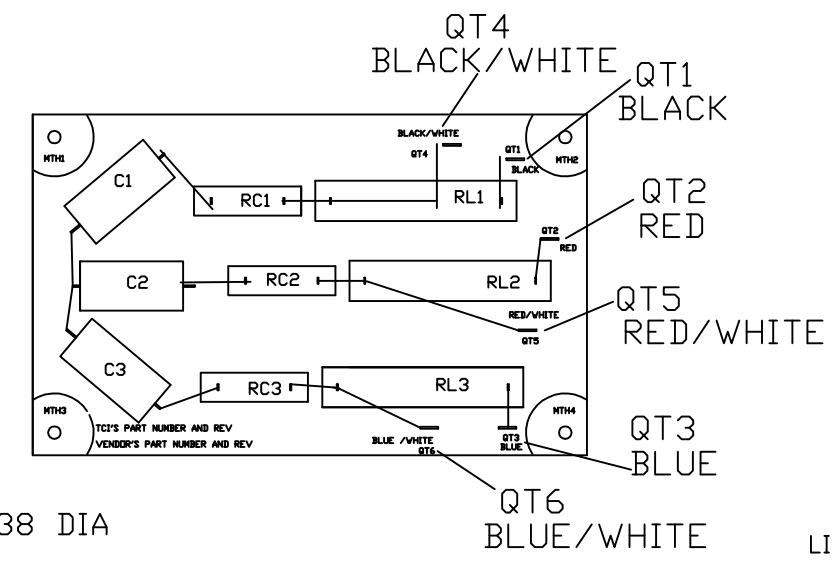
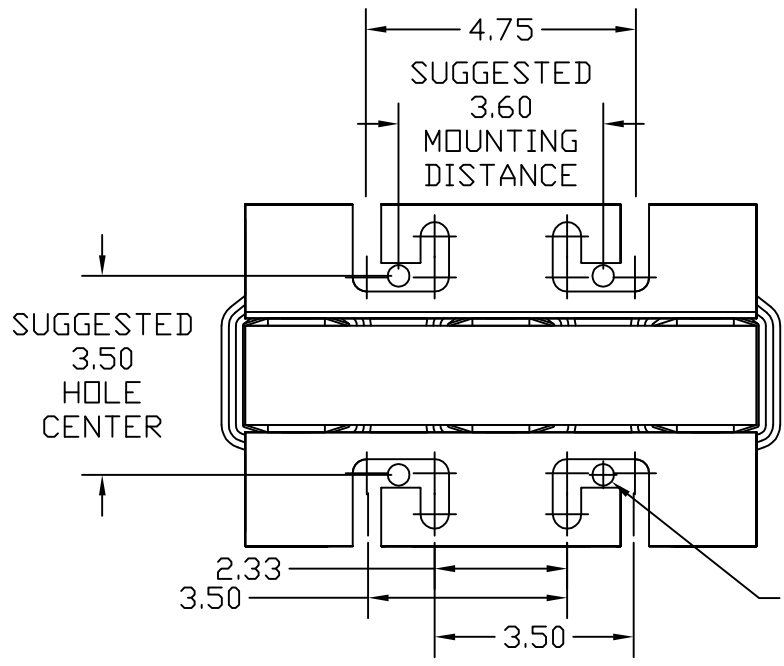
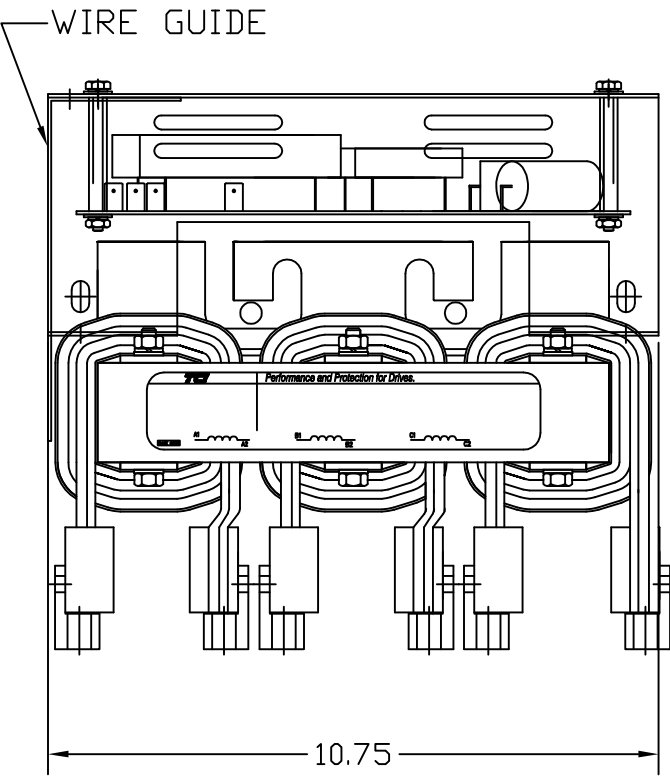


"SEE V1K INSTALLATION GUIDE FOR TERMINAL WIRE SIZE AND TORQUE"

SPECIFICATIONS:	
AMP.	200
VOLT	240-600
PHASE	3
HZ	60
WEIGHT, LBS.	60
OPEN VERSION	



REAR VIEW

REACTOR AND BOARD ASSEMBLY CONNECTIONS

TOLERANCE UNLESS OTHERWISE NOTED:	
MOUNTING	+/- .06
OVERALL	+/- .12

CUSTOMER IS RESPONSIBLE FOR INSTALLATION TO MEET ALL NATIONAL AND LOCAL ELECTRICAL CODES.

TCl, LLC CLAIMS PROPRIETARY RIGHTS IN THE MATERIAL HEREIN DISCLOSED. IT IS SUPPLIED WITHOUT PREJUDICE TO ANY PATENT RIGHTS OF TCl AND MAY NOT BE REPRODUCED OR USED TO MANUFACTURE ANYTHING SHOWN THEREIN WITHOUT WRITTEN PERMISSION FROM TCl.

				TOLERANCES (EXCEPT AS NOTED)
				DECIMAL
				.XX ± .03
				.XXX ± .01
				FRACTIONAL
				± 1/32
				ANGULAR
				± 1/2°
F	3216	ADD SEE GUIDE	10/31/14	DSW
NO		REVISION	DATE	BY

TCl W132 N10611 GRANT DRIVE GERMANTOWN, WI 53022

V1K200A00EX, OUTPUT FILTER
200 AMP, OPEN VERSION

EXTENDED LENGTH APPLICATIONS

DRN. BY	RJC	DATE	5/20/05	DWG. NO.	102713DG
SCALE	NONE	SIZE	B		SHT. 1 OF 1