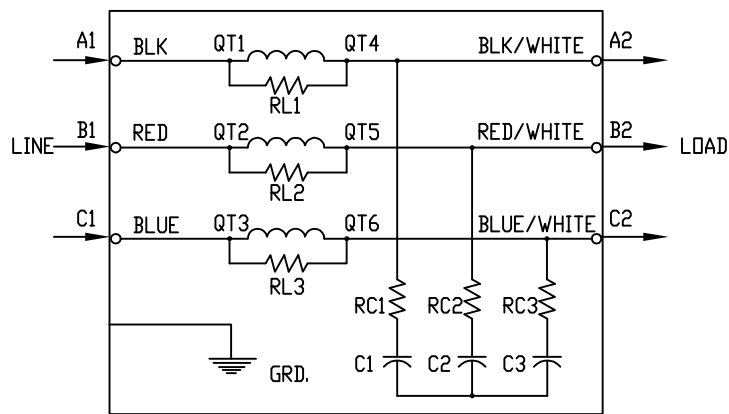
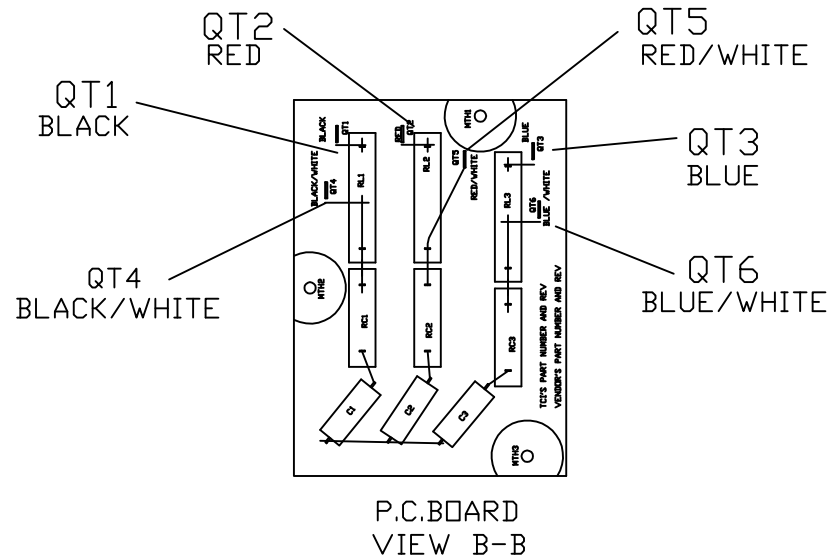
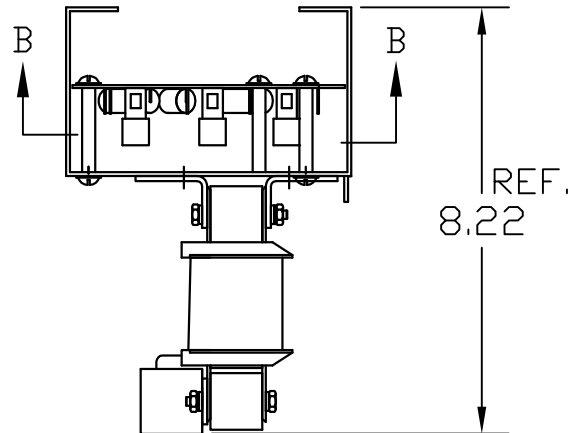


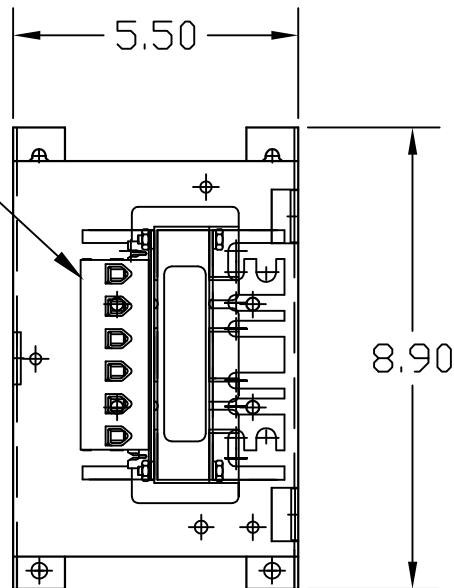
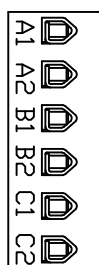
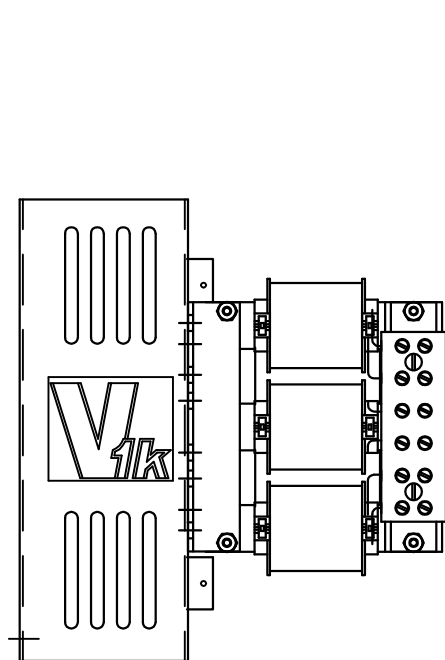
"SEE V1K INSTALLATION GUIDE FOR TERMINAL WIRE SIZE AND TORQUE"



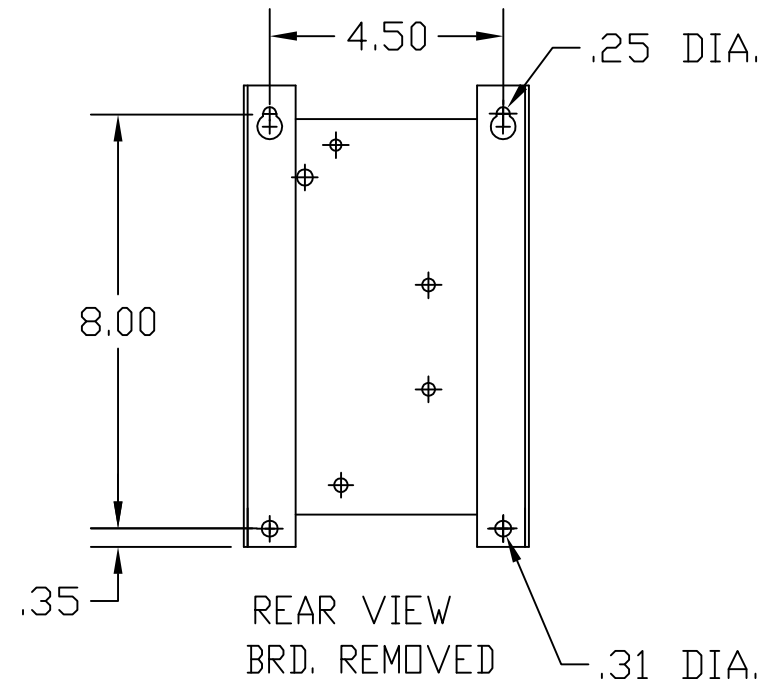
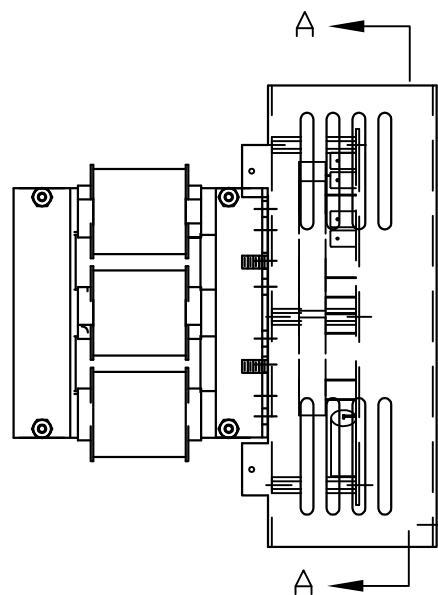
MARKINGS ON TERMINAL BLOCK
A1,A2,B1,B2,C1,C2 FOR REFERENCE ONLY.



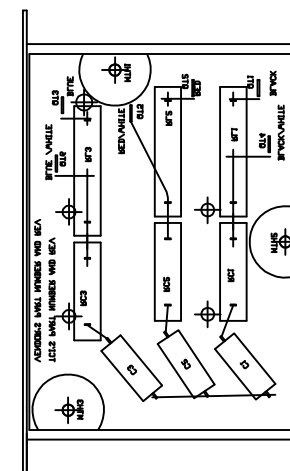
SPECIFICATIONS:	
AMP.	18
VOLT	240-600
PHASE	3
HZ	60
WEIGHT, LBS.	12
OPEN VERSION	



FRONT VIEW



REAR VIEW
BRD. REMOVED



SECTION A-A

TOLERANCE UNLESS OTHERWISE NOTED:	
MOUNTING	+/- .06
OVERALL	+/- .12

CUSTOMER IS RESPONSIBLE FOR INSTALLATION TO MEET ALL NATIONAL AND LOCAL ELECTRICAL CODES.

TCI, LLC CLAIMS PROPRIETARY RIGHTS IN THE MATERIAL HEREIN DISCLOSED. IT IS SUPPLIED WITHOUT PREJUDICE TO ANY PATENT RIGHTS OF TCI AND MAY NOT BE REPRODUCED OR USED TO MANUFACTURE ANYTHING SHOWN THEREIN WITHOUT WRITTEN PERMISSION FROM TCI.

NO	3216 ADD SEE GUIDE	12/9/14	DSW
NO	REVISION	DATE	BY

TOLERANCES (EXCEPT AS NOTED)
DECIMAL
.XX ± .03
.XXX ± .01
FRACTIONAL
± 1/32
ANGULAR
± 1/2°

TCI W132 N10611 GRANT DRIVE
GERMANTOWN, WI 53022

V1K18A00EX, OUTPUT FILTER

18 AMP, OPEN VERSION
EXTENDED LGTH. APPLICATIONS

DRN. BY	RJC	DATE	6/20/05	DWG. NO.	102730DG
SCALE	NONE	SIZE	B	SHT. 1 OF 1	