

Parts List			
TCI Part #	Description	Quantity	Item #
11632	Lug 600 kcmil	6	1LK
3556	Hex Hd Bolt 3/8-16 X 1 1/4 In	6	2LK
11626	Nut 3/8-16	6	3LK
1509	Flat Washer 3/8"	12	4LK

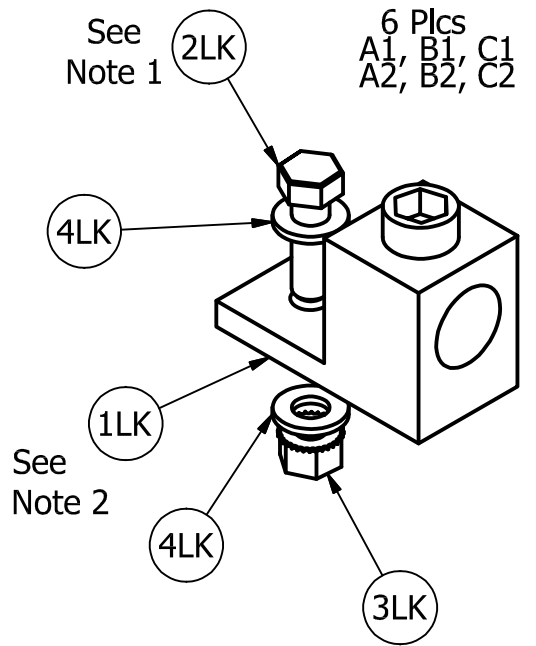


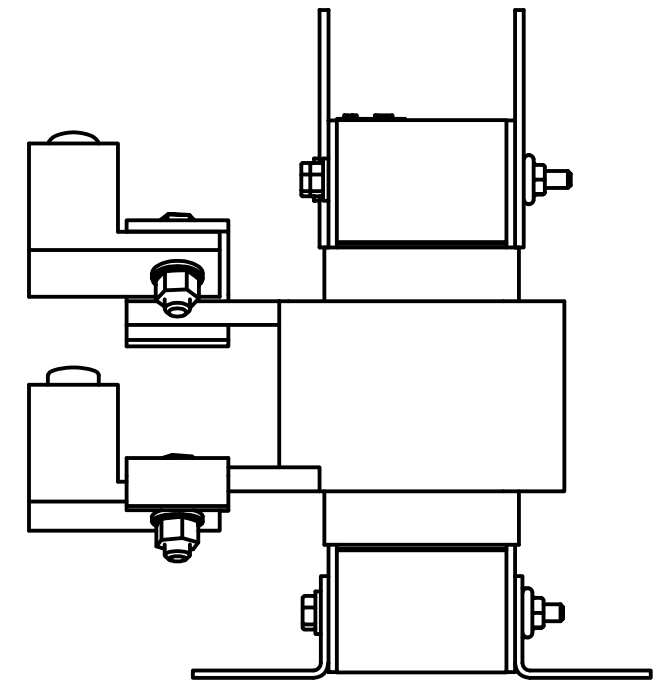
Table S600		IHI Connectors		
Wire Size Copper (solid to semi-rigid stranded and metric mm ² , ##)	Rating C	Wire Size FLEX Copper (#)	Wire Size Aluminum	Torque (all drive means)
600kcmil-4	90	444-2	600-4	500 in-lb (56.5 N-m)

IHI Connectors
International Hydraulics Inc.
ihiconnectors.com™

SA 200116 **UL** Listed 84JM ZMVV E129884

Pressure Terminal Connectors
NRTL Cat. No. **S600**

600kcmil-4 AL9CU



- Notes:
- 1.) Torque bolt (Item #2LK) to 200 in-lb (22.6 N-m).
 - 2.) To prevent lug from rotating place lug on underside of tab as shown.

Follow NEC guidelines to determine acceptable wire ampacity requirements.

				TOLERANCES (EXCEPT AS NOTED)	TCI W132 N10611 Grant Drive Germantown, WI 53022
				DECIMAL	
				.XX ± .25	Lug Kit, 600MCM-4
				.XXX ± .10	
				FRACTIONAL	DRN. BY: JRN
				± 1/16	DATE: 8/30/17
				ANGULAR	APRVD:
				± 1°	SCALE:
NO	REVISION	DATE	BY		LK12-Dwg
					SIZE: B
					SHT.1 OF 1