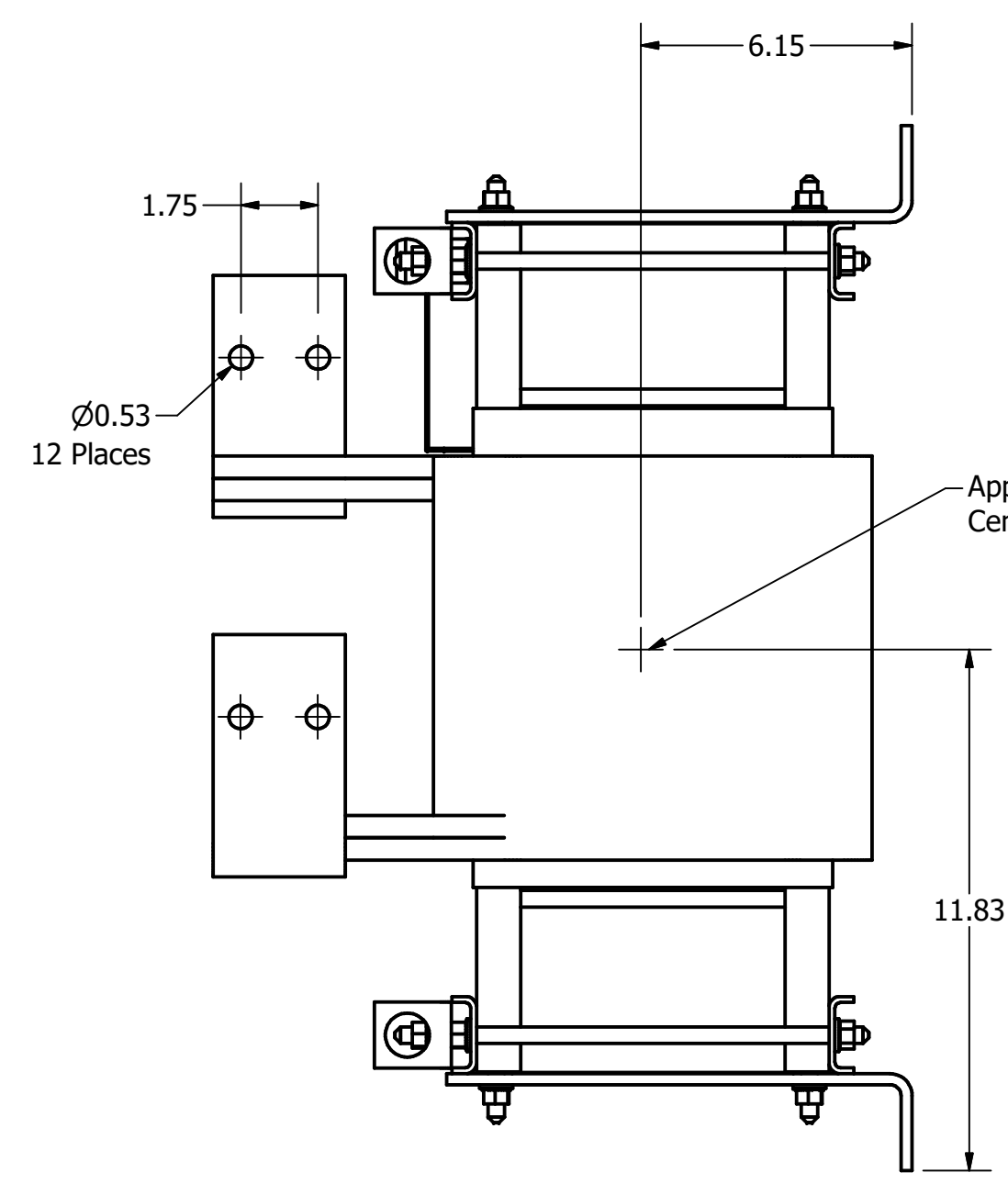
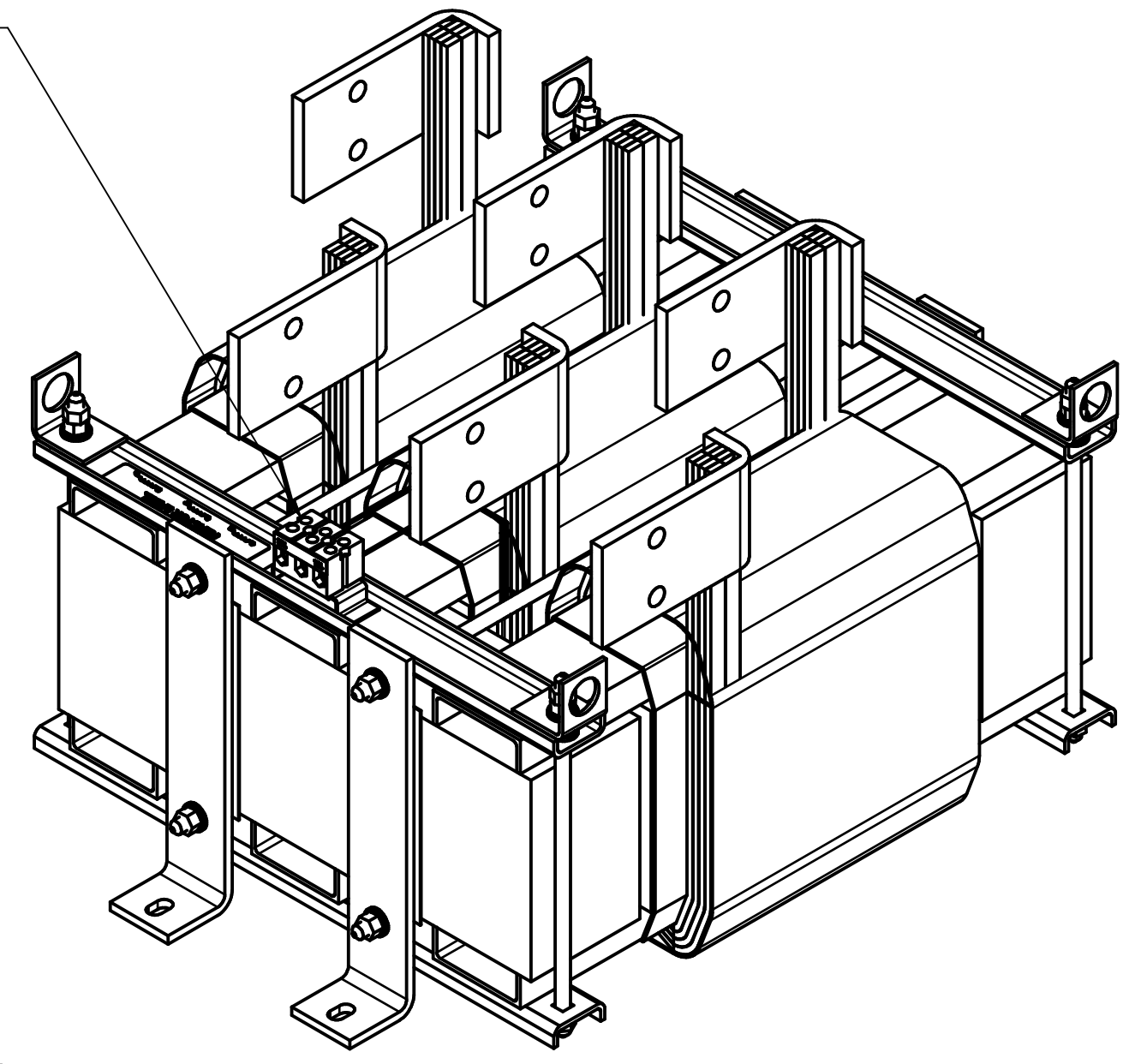
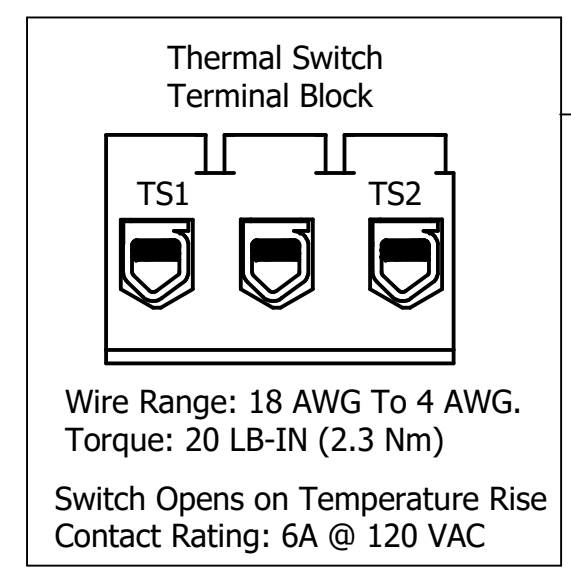
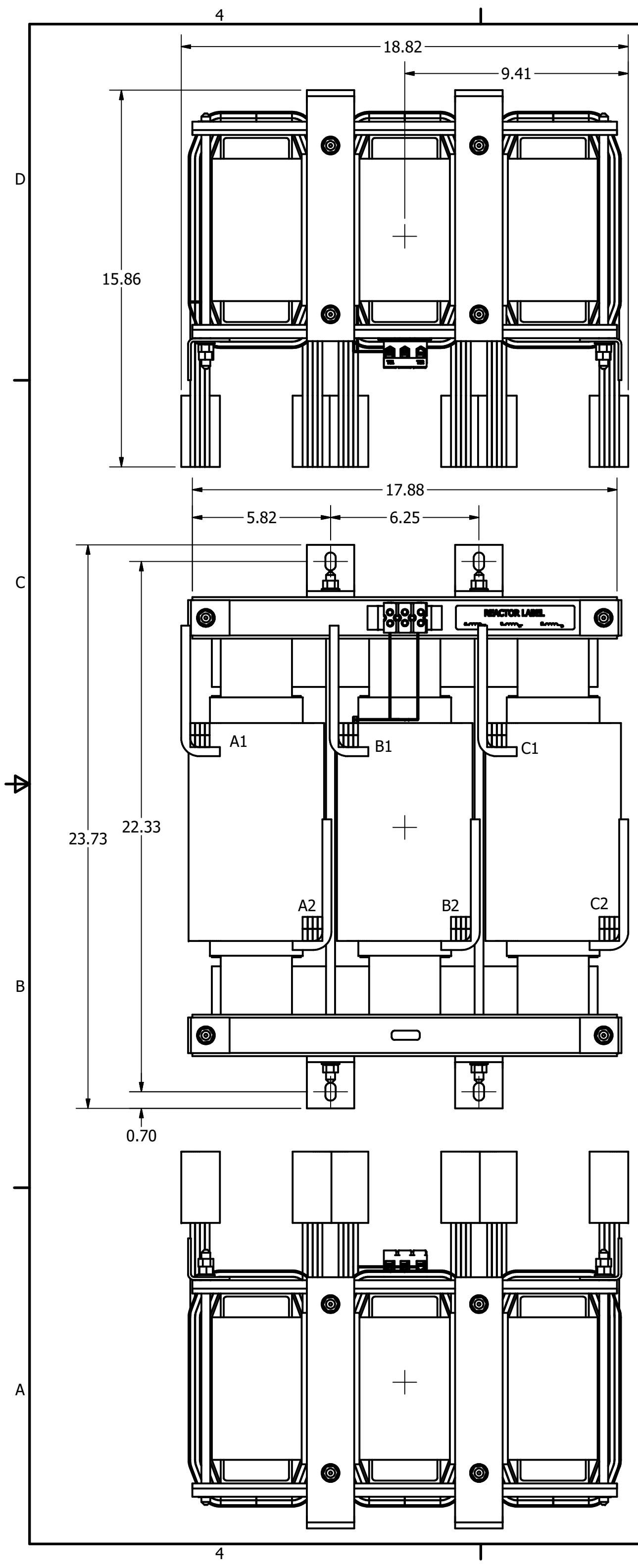


TCI Part Number	Rated Amps (A)	Rated Voltage (V)	Hz	---uH ±5%	Approx Weight (LBS)
KTRMG850AX2	850	480	60	57	575



**TCI, LLC**  
 Germantown, WI  
 www.transcoll.com  
 800-824-8282

**KDR Drive Reactor**  
 KTRMG— (Motor Amps) Or (Rating Amps)  
 3 PH, 50/60Hz, 600V Max. —Max.  
 40C Amb Max, 155C Rise.

(800) 824-8282 • transcoll.com

TCI, LLC CLAIMS PROPRIETARY RIGHTS IN THE MATERIAL HEREIN DISCLOSED. IT IS SUPPLIED WITHOUT PREJUDICE TO ANY PATENT RIGHTS OF TCI AND MAY NOT BE REPRODUCED OR USED TO MANUFACTURE ANYTHING SHOWN THEREIN WITHOUT WRITTEN PERMISSION FROM TCI.				TOLERANCES (EXCEPT AS NOTED)		Material(s) Shall be RoHS Compliant	
				DECIMAL		<b>TCI</b> W132 N10611 Grant Drive Germantown, WI 53022	
				.XX ± .25		Sinewave Reactor, Wall Mounted	
				.XXX ± .10		KTRMG850AX2, 480V, 700HP	
				FRACTIONAL		DRN BY: JRN DATE: 06/17/20 108671DG	
				± 1/16		SCALE: 1/4	
				ANGULAR		SIZE: C	
				± 1°		SHT. 1 OF 1	
A	As Designed	06/17/20	JRN	NO	REVISION	DATE	BY

Customer Is Responsible For Installation to Meet All National And Local Electrical Codes.