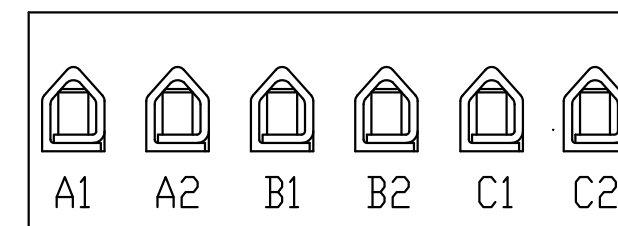
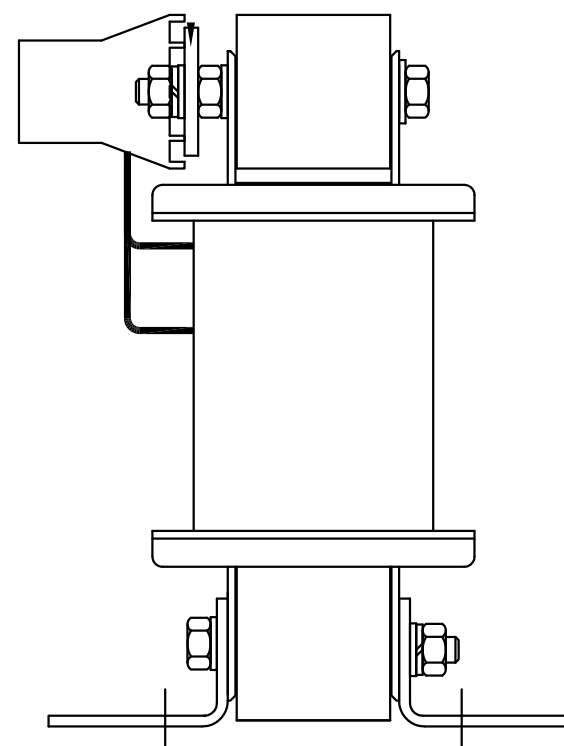
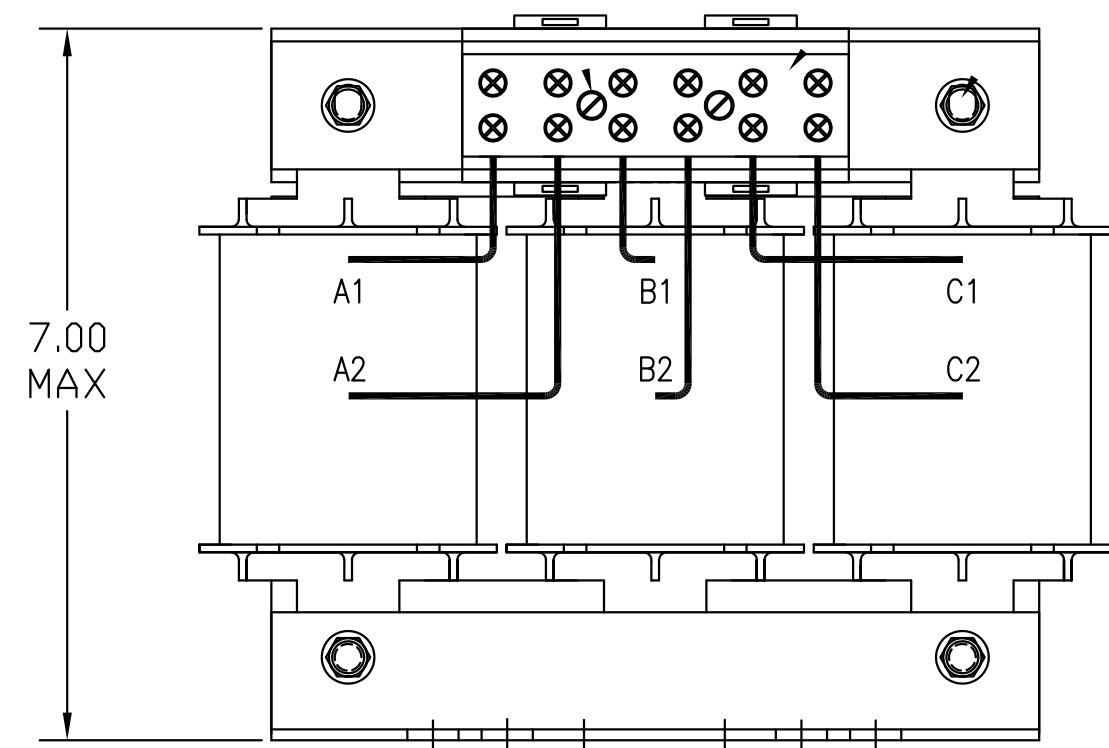


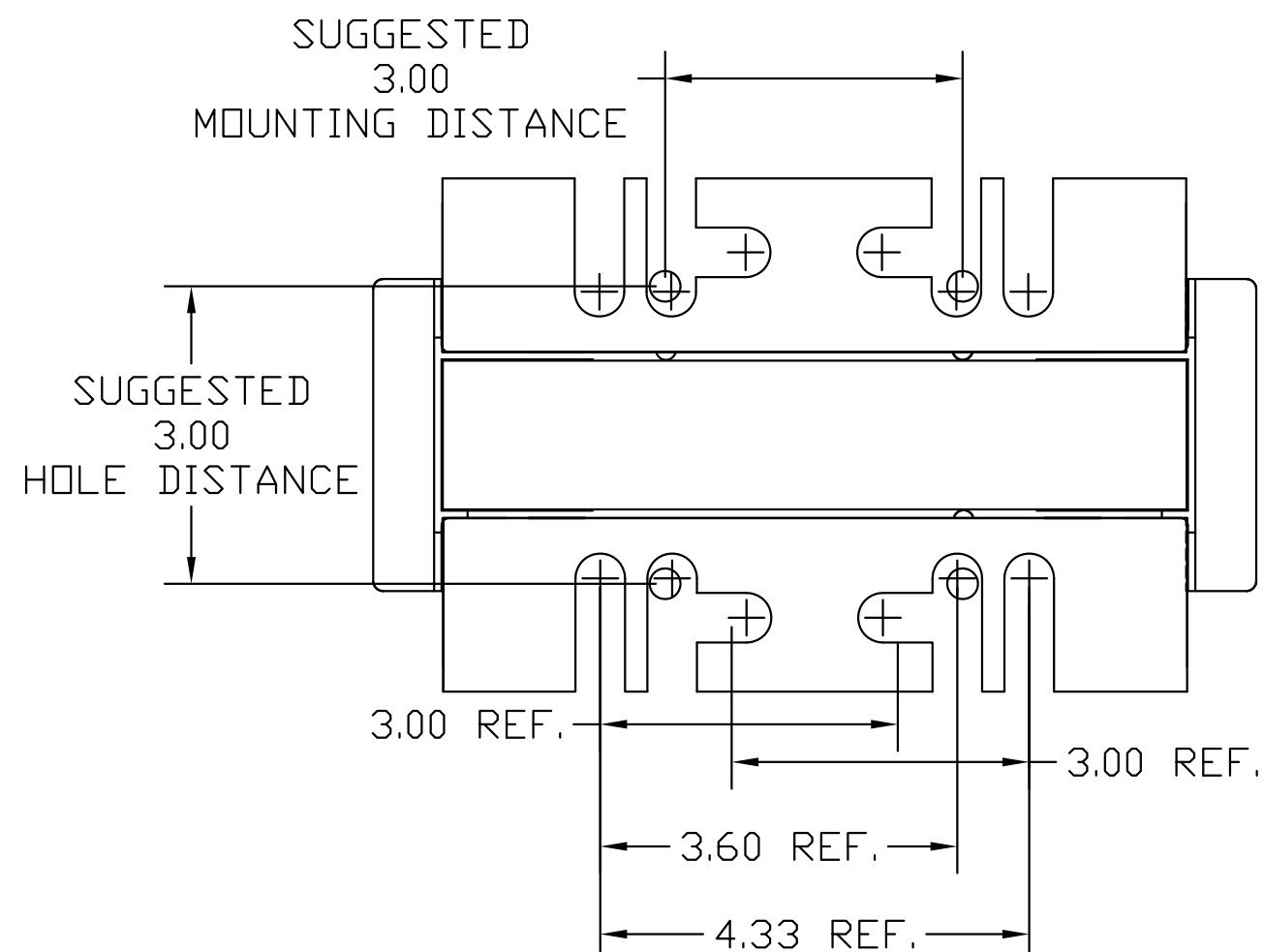
CATALOG NO	__mH $\begin{matrix} +8\% \\ -2\% \end{matrix}$	__AMPS(A)	APPROX WT-LBS
KTR9L55HG	2.86	20.0	21

TCI TRANS-COIL, INC MILWAUKEE WI WWW.transcoil.com 800-824-8282 <small>DATE CODE</small>	Performance and Protection for Drives. KTR Tuning Reactor CATALOG# _____ 3PH, 50Hz, 600V Max, --- Amps 40C Amb Max, 115C Rise		



NOTE: A1, A2, B1, B2, C1, C2, MARKINGS ON COIL AND TERMINAL BLOCK FOR REFERENCE ONLY.

TERMINAL BLOCK TORQUE(LB-IN)=CUSTOMER WIRE 35 = 1 AWG THRU 4 AWG 30 = 6 AWG THRU 14 AWG 25 = 16 AWG THRU 20 AWG 22 = 22 AWG
--



TCI, LLC CLAIMS PROPRIETARY RIGHTS IN THE MATERIAL HEREIN DISCLOSED. IT IS SUPPLIED WITHOUT PREJUDICE TO ANY PATENT RIGHTS OF TCI AND MAY NOT BE REPRODUCED OR USED TO MANUFACTURE ANYTHING SHOWN THEREIN WITHOUT WRITTEN PERMISSION FROM TCI.				TOLERANCES (EXCEPT AS NOTED):	W132 N10611 Grant Drive Germantown, WI 53022 KTR9L55HG TRAP FILTER 18kW, 400V, 50/60 HZ. DRN. BY RJC DATE 10/12/10 DWG. NO. 104390DG SCALE TO FIT SIZE C SHT.1 OF 1
				DECIMAL	
				.XX ±.03	
				.XXX ±.01	
				FRACTIONAL	
				± 1/32	
				ANGULAR	
				± 1/2°	