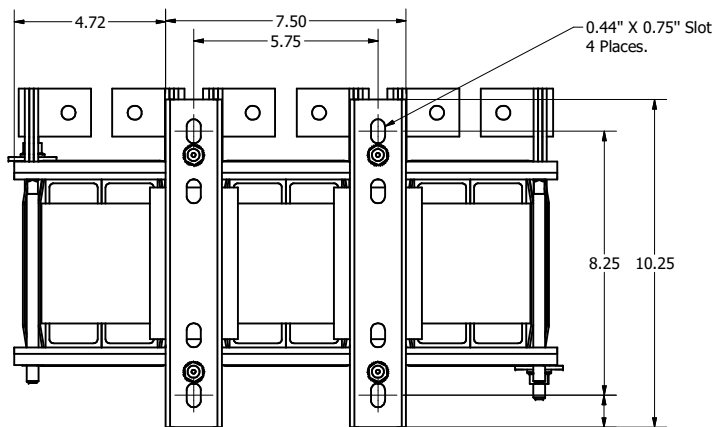
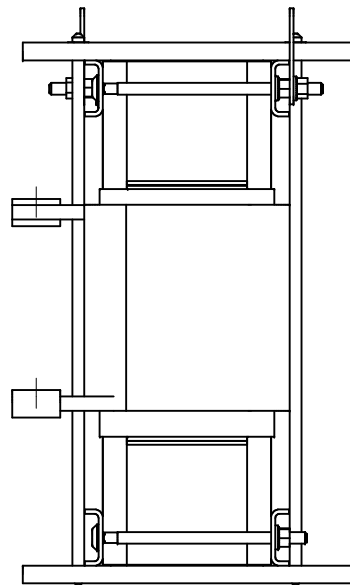
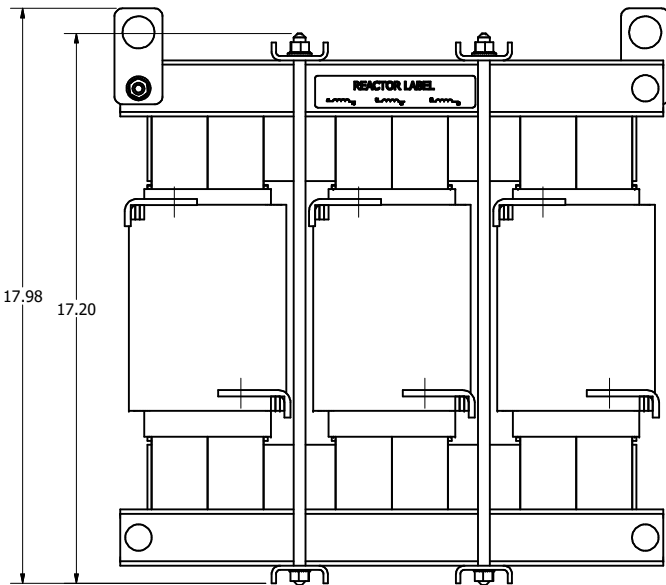
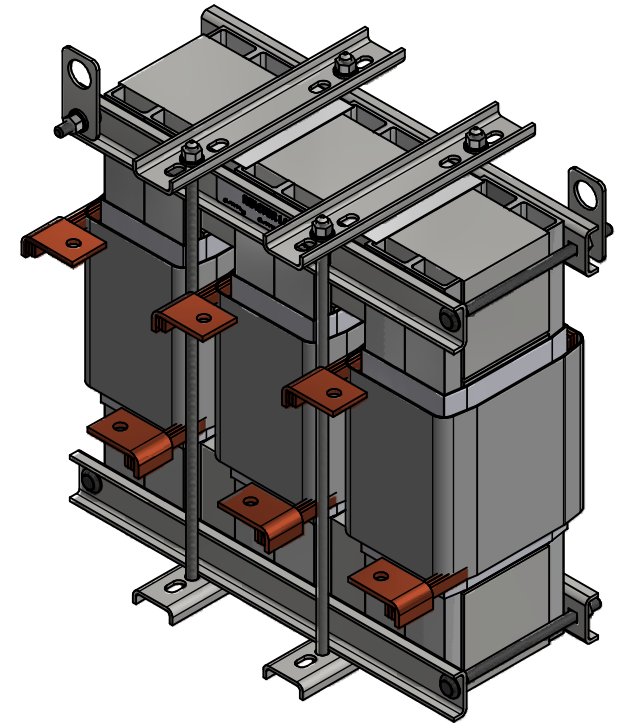


0.44 Dia Holes
6 Places



0.44" X 0.75" Slot
4 Places.


TCI Part Number	Rated Amps (A)	Volts (V)	---uH +8%/-2%	Approx Weight (LBS)
KTR90A65HL	228	42.73	287	250



TCI, LLC CLAIMS PROPRIETARY RIGHTS IN THE MATERIAL HEREIN DISCLOSED. IT IS SUPPLIED WITHOUT PREJUDICE TO ANY PATENT RIGHTS OF TCI AND MAY NOT BE REPRODUCED OR USED TO MANUFACTURE ANYTHING SHOWN THEREIN WITHOUT WRITTEN PERMISSION FROM TCI.

NO	REVISION	DATE	BY	TOLERANCES (EXCEPT AS NOTED)
C	5248, Coil redesigned	5/7/2020	DSW	DECIMAL .XX +/- .25 .XXX +/- .1
B	4250, L CHG.	1/2/18	DSW	FRACTIONAL +/- 1/16
A	AS DESIGNED	10/2/17	DSW	ANGULAR +/- 1 °
NO	REVISION	DATE	BY	+/- 1 °

Material(s) Shall be RoHS Compliant



W132 N11061 Grant Drive
Germantown, WI 53022

KTR90A65HL Tuning Reactor (600HP)
228 Amps, 480 Volts

DRN. BY DSW	DATE 10/2/17	DWG. No. 107325DG
SCALE 1/3	APPRVD.	SHEET 1 OF 1