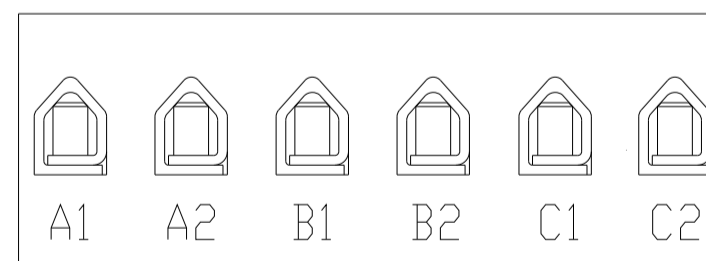
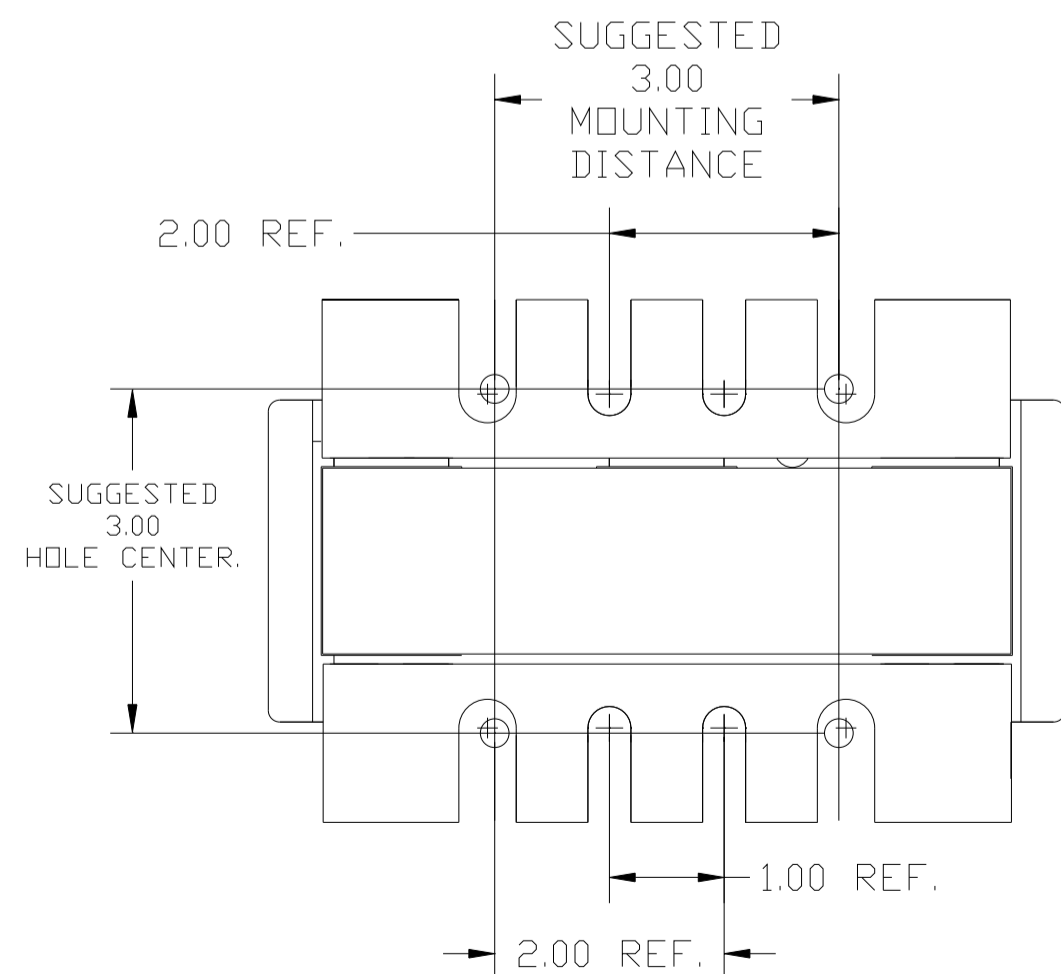
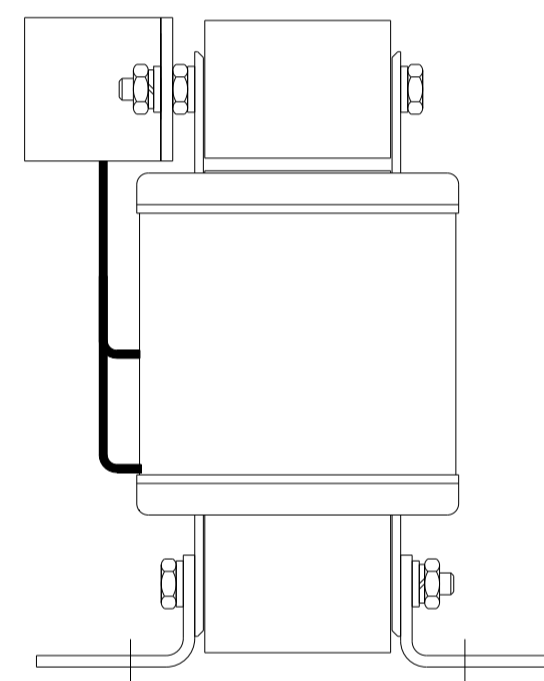
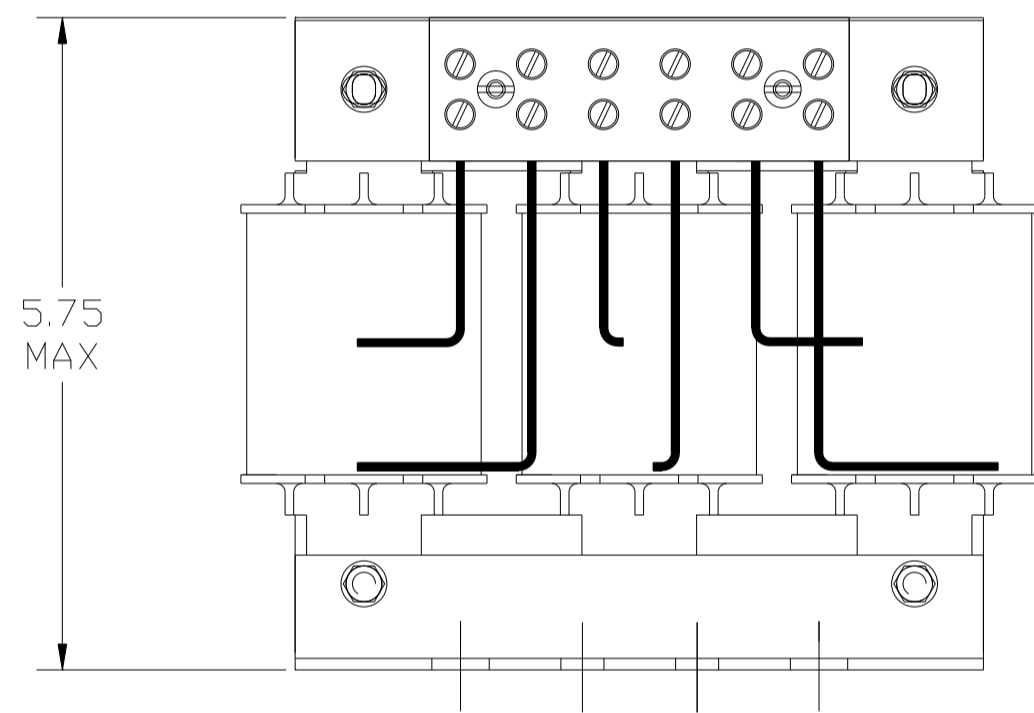


CATALOG NO	__mH $\begin{matrix} +8\% \\ -2\% \end{matrix}$	__AMPS(A)	APPROX WT-LBS	TERMINAL BLOCK TORQUE (LB-IN)
KTR8A65HG	3.458	15.31	16	20

TCI
 TRANS-COIL, INC
 MILWAUKEE WI
 WWW.transcoil.com
 800-824-8282

Performance and Protection for Drives.
 KTR Tuning Reactor
 CATALOG# _____
 3PH, 60Hz, 600V Max, --- Amps
 40C Amb Max, 155C Rise



NOTE: A1, A2, B1, B2, C1, C2,
 MARKINGS ON TERMINAL BLOCK
 FOR REFERENCE ONLY.

				TOLERANCES (EXCEPT AS NOTED)		7878 N. 86th STREET MILWAUKEE, WI 53224	
				DECIMAL			
				.XX ± .03		KTR8A65HG TRAP REACTOR 15.31 AMPS, 480V, 25HP	
				.XXX ± .01			
				FRACTIONAL		DRN BY DSW DATE 01/31/05 DWG. NO. 102291DG SCALE TO FIT APRVD. C	
				± 1/32			
B	2661 ADD CE TO LABEL	3/10/10	DSW	ANGULAR			
NO	REVISION	DATE	BY	± 1/2°			