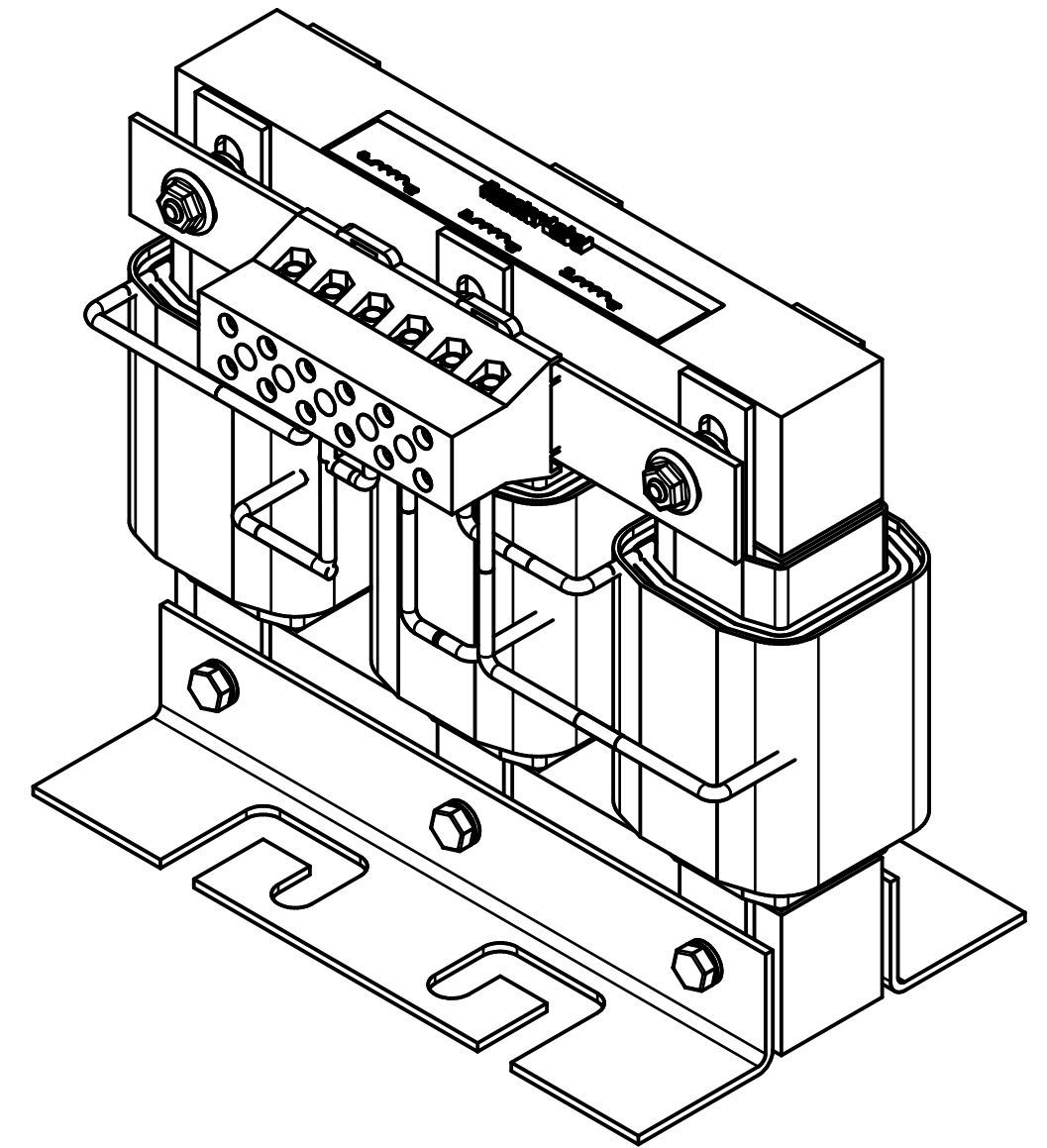
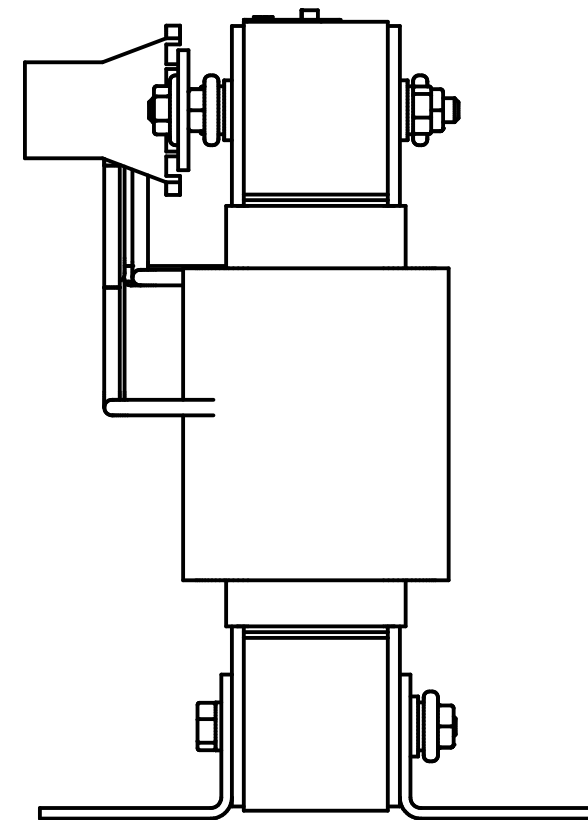
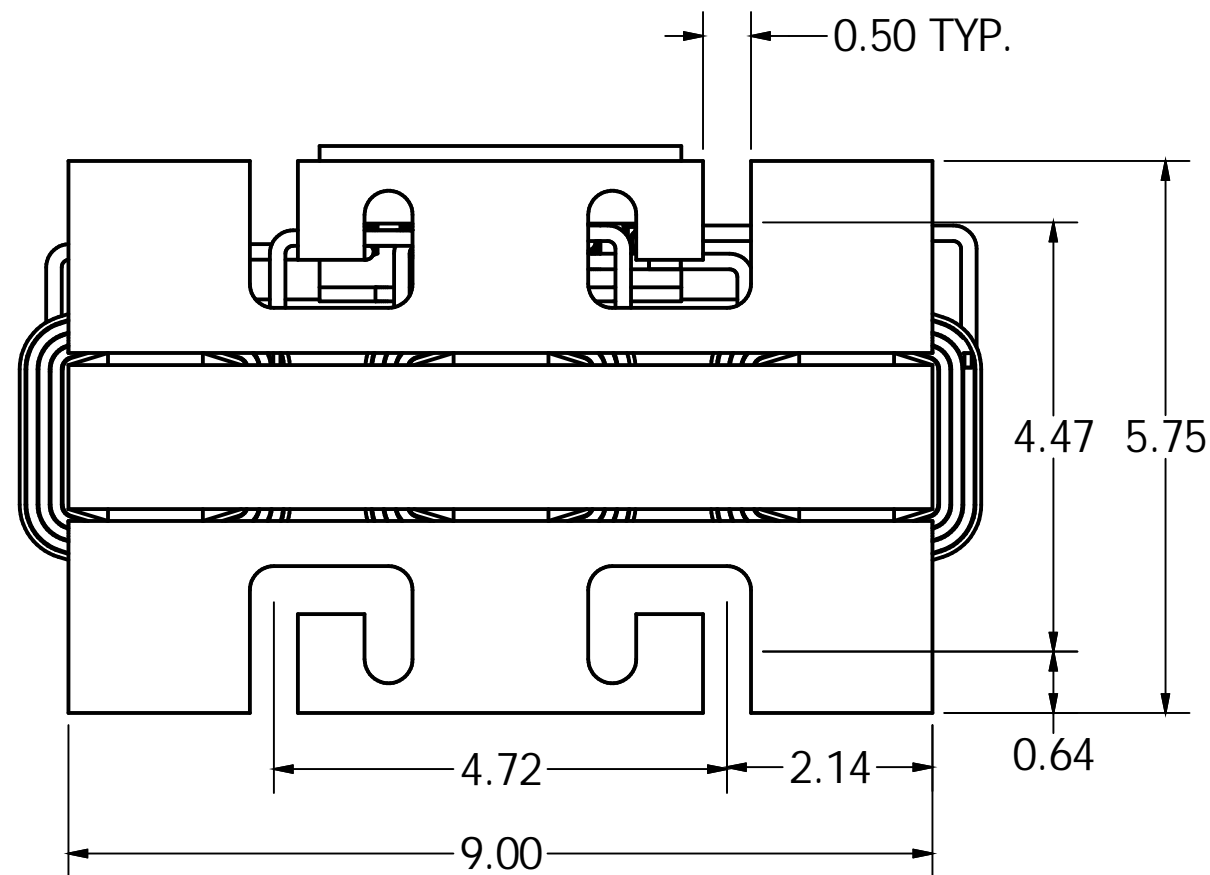
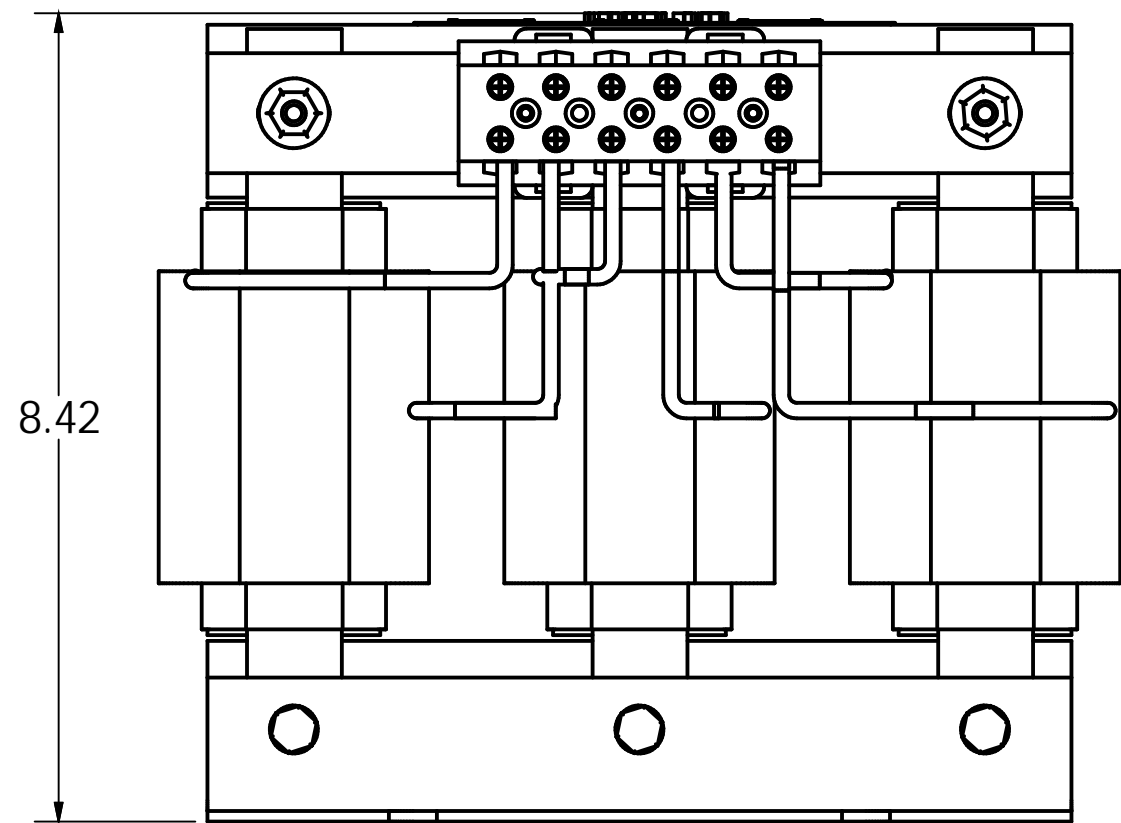
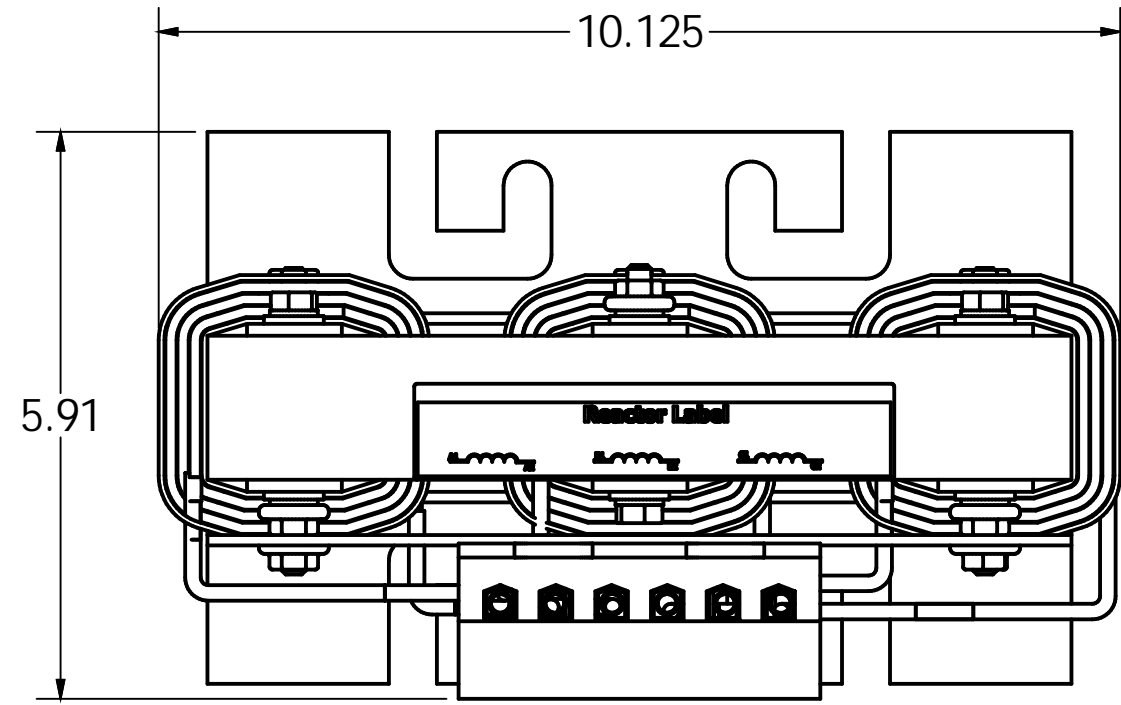


TCI PART#	RATED AMPS (A)	--mH ^{+8%} _{-2%}	APPROX WT-LBS
KTR6A65HL	15	4.33	31

System Voltage 480V, 291Hz.



Wire Range:
1AWG (7 & 19 strand only), 2 AWG to 22AWG

Tightening Torque:
1AWG thru 4AWG 35 in.-lb. max
6AWG thru 14AWG 30 in.-lb. max
16AWG thru 22AWG 25 in.-lb. max

Material(s) Shall be RoHS Compliant

TCI, LLC CLAIMS PROPRIETARY RIGHTS IN THE MATERIAL HEREIN DISCLOSED. IT IS SUPPLIED WITHOUT PREJUDICE TO ANY PATENT RIGHTS OF TCI AND MAY NOT BE REPRODUCED OR USED TO MANUFACTURE ANYTHING SHOWN THEREIN WITHOUT WRITTEN PERMISSION FROM TCI.

TOLERANCES (EXCEPT AS NOTED)			
	DECIMAL		
	.XX	+/-	.25
	.XXX	+/-	.1
	FRACTIONAL		
	+/-	1/16	
	ANGULAR		
	+/-	1°	

	W132 N10611 Grant Drive Germantown, WI. 53022	
	KTR TUNING REACTOR (40HP) KTR6A65HL, 15 AMPS 480 VOLTS	
DRN. BY DSW	DATE 3/22/17	DWG. No. 106238DG
SCALE 1/2	APPRVD.	SHEET 1 OF 1