

CATALOG NO	--uH $\begin{matrix} +8\% \\ -2\% \end{matrix}$	--AMPS(A)	APPROX WT-LBS
KTR64L55HG	361	146.6	112

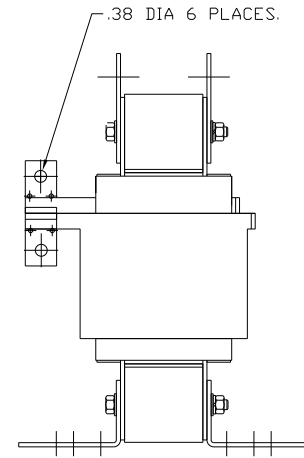
**TCI** Performance and Protection for Drives.

TRANS-COIL, INC  
MILWAUKEE WI  
WWW.transcoil.com  
800-824-8282

KTR Tuning Reactor  
CATALOG#  
3PH, 60Hz, 600V Max, --- Amps  
40C Amb Max, 155C Rise

RU<sup>®</sup> US SA<sup>®</sup> CE

DATE CODE A1 A2 B1 B2 C1 C2



			TOLERANCES (EXCEPT AS NOTED):	<b>TCI</b> 7878 N. 86th STREET MILWAUKEE, WI 53224					
			DECIMAL	KTR64L55HG, TRAP REACTOR 400V, 160kW.					
			.XX ± .03						
			.XXX ± .01						
			FRACTIONAL						
			± 1/32						
A	AS RELEASED	10/25/10	DSW	DRN BY	DSW	DATE	10/25/10	DWG. NO.	104496DG
NO	REVISION	DATE	BY	SCALE	TO FIT	APPRVD			SHT. 1 OF 1