

CATALOG NO	--mH $\begin{matrix} +8\% \\ -2\% \end{matrix}$	--AMPS(A)	APPROX WT-LBS	TERMINAL BLOCK TORQUE (LB-IN)
KTR5L55HG	4.29	13.4	16	20

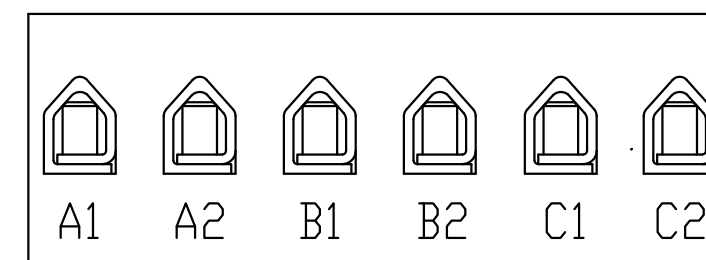
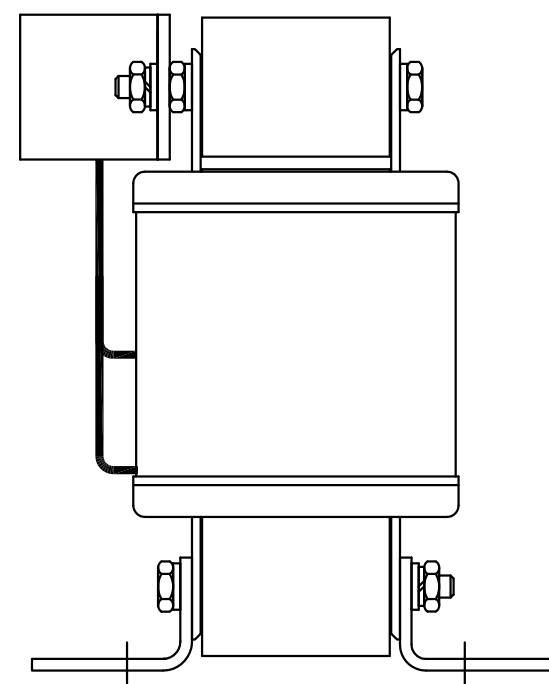
TCI Performance and Protection for Drives.

TRANS-COIL, INC
MILWAUKEE WI
WWW.transcoil.com
800-824-8282

KTR Tuning Reactor
CATALOG# []
3PH, 50Hz, 600V Max, [] Amps
40C Amb Max, 115C Rise

RU[®] US SA[®] CE

DATE CODE A1 A2 B1 B2 C1 C2



NOTE: A1, A2, B1, B2, C1, C2,
MARKINGS ON COIL AND TERMINAL BLOCK
FOR REFERENCE ONLY.

TCI, LLC CLAIMS PROPRIETARY RIGHTS IN THE MATERIAL HEREIN DISCLOSED. IT IS SUPPLIED WITHOUT PREJUDICE TO ANY PATENT RIGHTS OF TCI AND MAY NOT BE REPRODUCED OR USED TO MANUFACTURE ANYTHING SHOWN THEREIN WITHOUT WRITTEN PERMISSION FROM TCI.				TOLERANCES (EXCEPT AS NOTED):	W132 N10611 Grant Drive Germentown, WI 53022
				DECIMAL	
				.XX ±.03 .XXX ±.01	
				FRACTIONAL ± 1/32	
	AS BUILT	10/21/10	DSW	ANGULAR ± 1/2°	DRN. BY DSW DATE 10/26/10 DWG. NO. 104487DG
	REVISION	DATE	BY	SCALE TO FIT	SIZE C SHT.1 OF 1