

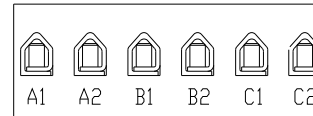
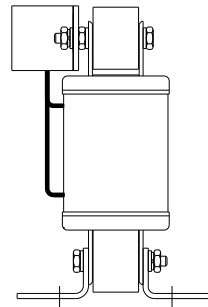
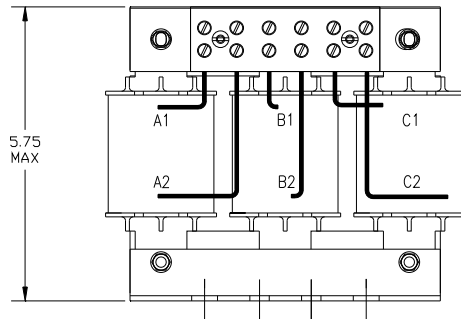
| CATALOG NO | __mH $\pm 8\%$ / $-2\%$ | __AMPS(A) | APPROX WT-LBS | TERMINAL BLOCK TORQUE (LB-IN) |
|------------|-------------------------|-----------|---------------|-------------------------------|
| KTR5C65HG  | 8.646                   | 7.65      | 10            | 20                            |

**TCL** Performance and Protection for Drives.

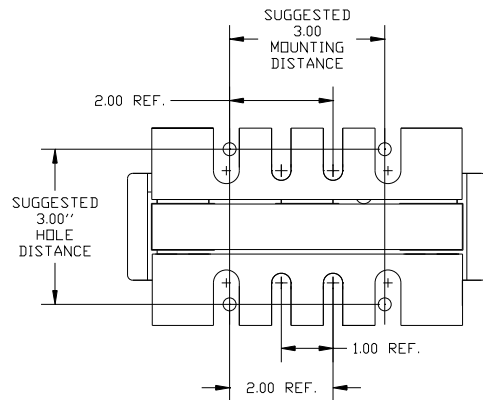
TRANS-COIL, INC  
MILWAUKEE WI  
WWW.transcoil.com  
800-824-8282

KTR Tuning Reactor  
CATALOG #  
3PH, 60Hz, 600V Max, \_\_\_ Amps  
40C Amb. Max, 115C Rise

UL US CE



NOTE: A1, A2, B1, B2, C1, C2,  
MARKINGS ON COIL AND TERMINAL BLOCK  
FOR REFERENCE ONLY.



TCL, LLC CLAIMS PROPRIETARY RIGHTS IN THE MATERIAL HEREIN DISCLOSED. IT IS SUPPLIED WITHOUT PREJUDICE TO ANY PATENT RIGHTS OF TCL AND MAY NOT BE REPRODUCED OR USED TO MANUFACTURE ANYTHING SHOWN THEREIN WITHOUT WRITTEN PERMISSION FROM TCL.

| NO | REVISION    | DATE    | BY  |
|----|-------------|---------|-----|
|    | 2661 ADD CE | 3/15/10 | DSW |

TOLERANCES (EXCEPT AS NOTED):  
DECIMAL  
.XX ± .03  
.XXX ± .01  
FRACTIONAL  
± 1/32  
ANGULAR  
± 1/2°

**TCL**® W132 N10611 Grant Drive  
Germanstown, WI 53022

TRAP REACTOR  
KTR5C65HG, 600V, 15HP

DRN BY: DSW DATE: 02/22/05 DWG. NO: 102374DG  
SCALE: TO FIT SIZE: B

SHT. 1 OF 1