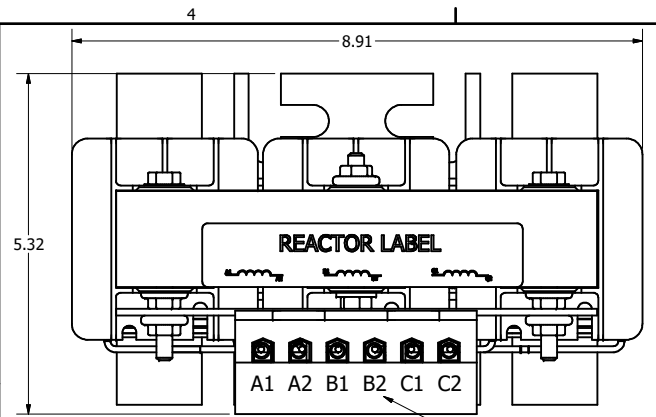
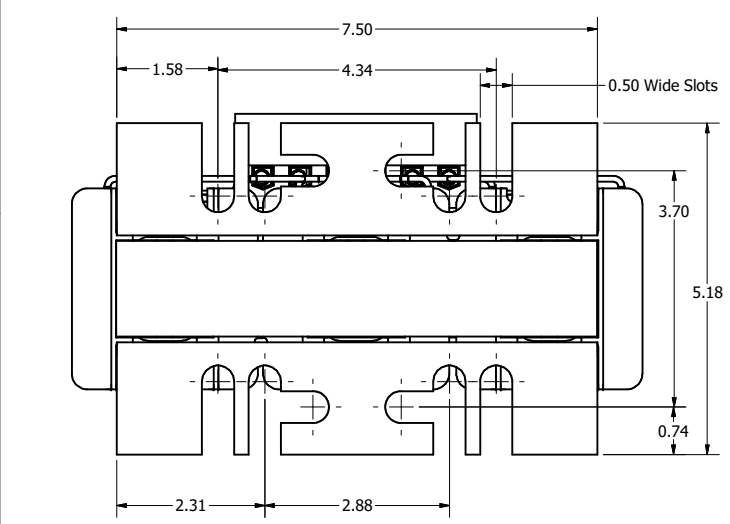
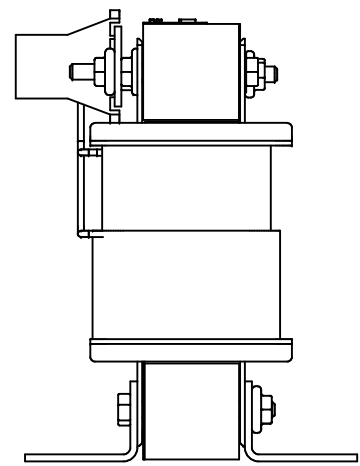
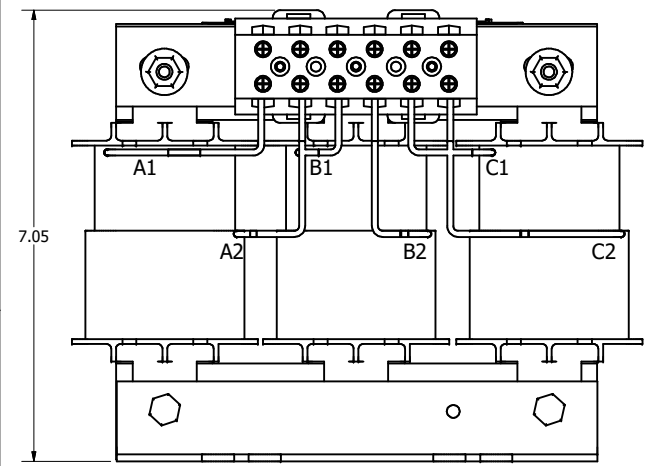
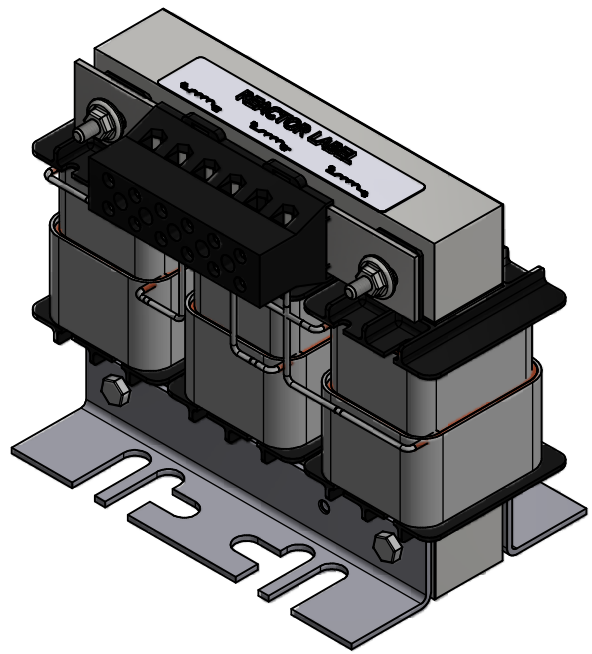


TCI Part Number	Horsepower (HP)	Rated Amps (A)	---uH +8%/-2%	Weight (LBS)
KTR5A65HL	30	12.6	5221	25



Markings On Terminal Block  
And Coil For Reference Only.

**Wire Range:**  
1AWG (7 & 19 strand only), 2 AWG to 22AWG  
**Tightening Torque:**  
1AWG thru 4AWG 35 in.-lb. max  
6AWG thru 14AWG 30 in.-lb. max  
16AWG thru 22AWG 25 in.-lb. max



Customer Is Responsible For Installation to  
Meet All National And Local Electrical Codes.

Material(s) Shall be RoHS Compliant

TCI, LLC CLAIMS PROPRIETARY RIGHTS IN THE MATERIAL HEREIN DISCLOSED. IT IS SUPPLIED WITHOUT PREJUDICE TO ANY PATENT RIGHTS OF TCI AND MAY NOT BE REPRODUCED OR USED TO MANUFACTURE ANYTHING SHOWN THEREIN WITHOUT WRITTEN PERMISSION FROM TCI.				TOLERANCES (EXCEPT AS NOTED)		W132 N10611 Grant Drive Germantown, WI 53022	
				DECIMAL		.XX ± .25 .XXX ± .10	
				FRACTIONAL		1/16	
B	5264, Coil Redesigned	5/14/2020	DSW	ANGULAR		DRN BY: DSW	DATE: 7/13/17
A	As Designed	7/13/17	DSW			SCALE:	107173DG
NO	REVISION	DATE	BY	± 1°		FILE	SHT 1 OF 1