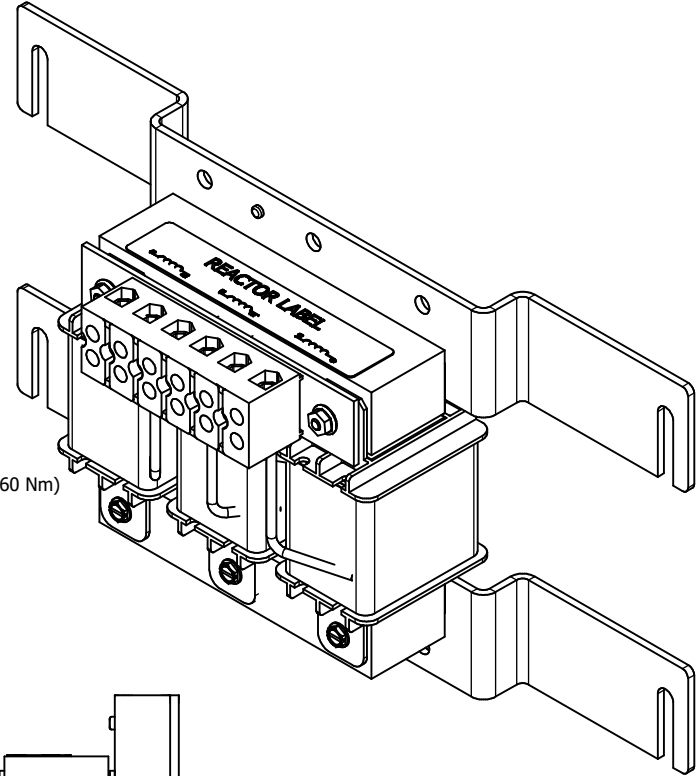
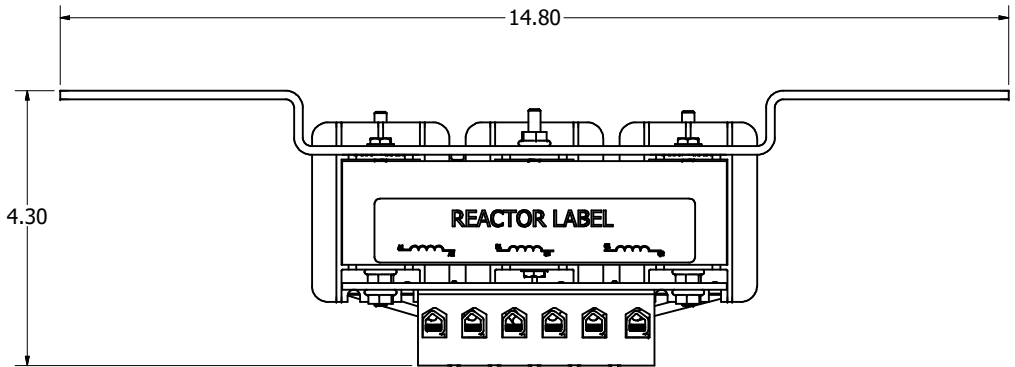
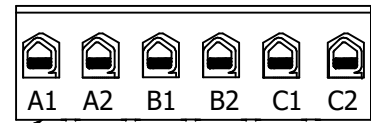


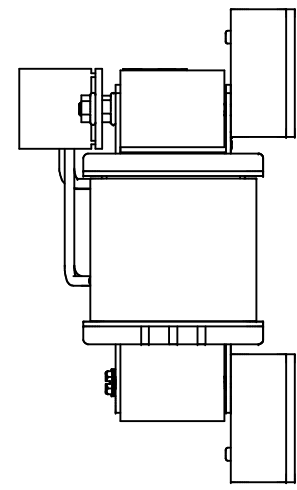
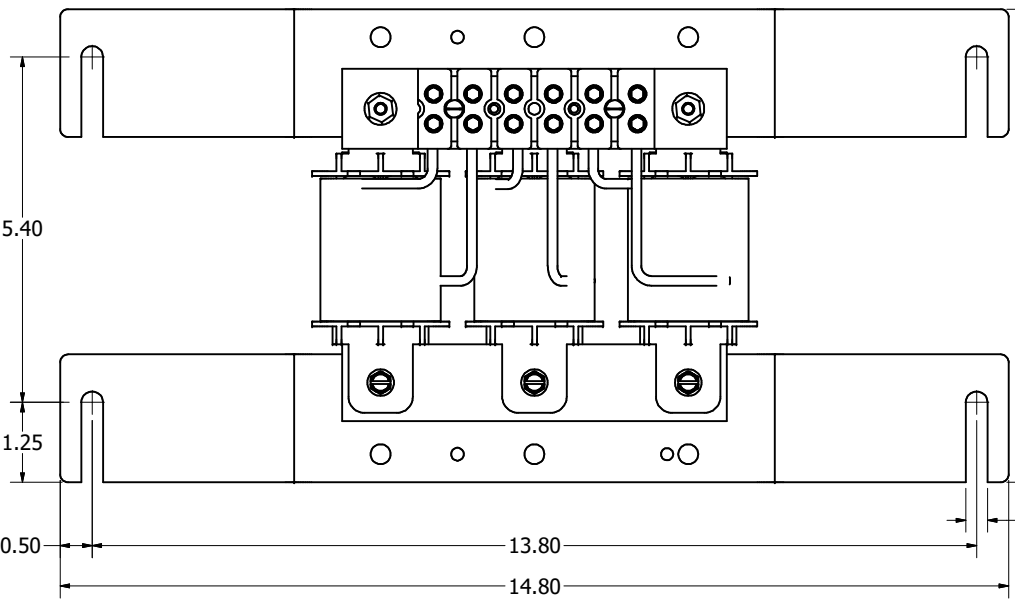
TCI Part Number	Horsepower (HP)	Amps	---uH +8%/-2%	Weight (LBS)
KTR5A55HGX1	15	9.6	6550	24



Wire Range: 4- 18 AWG. Torque : 20 IN-LBS (2.60 Nm)



(Customer Connections)
Markings On Terminal Block
For Reference Only.



Customer Is Responsible For Installation to
Meet All National And Local Electrical Codes.

Material(s) Shall be RoHS Compliant

TCI, LLC CLAIMS PROPRIETARY RIGHTS IN THE MATERIAL HEREIN DISCLOSED. IT IS SUPPLIED WITHOUT PREJUDICE TO ANY PATENT RIGHTS OF TCI AND MAY NOT BE REPRODUCED OR USED TO MANUFACTURE ANYTHING SHOWN THEREIN WITHOUT WRITTEN PERMISSION FROM TCI.

NO	REVISION	DATE	BY	TOLERANCES (EXCEPT AS NOTED)
B	4751 Updated Mounting	05/23/19	JRN	DECIMAL .XX ± .25 .XXX ± .10
A	AS DESIGNED	04/10/19	JRN	FRACTIONAL ± 1/16
				ANGULAR ± 1°

TCI W132 N10611 Grant Drive
Germantown, WI 53022

KTR5A55HGX1, Wall Mounted,
9.6A, 3 Phase, 5th Tuning Inductor,

DRN BY: JRN DATE: 04/10/19 108086DG
SCALE: 1/2 DRAWN BY: JRN

SHT 1 OF 1