

CATALOG NO	--uH $\begin{matrix} +8\% \\ -2\% \end{matrix}$	--AMPS(A)	APPROX WT-LBS
KTR53L55HG	418	126.6	105

TCI Performance and Protection for Drives.

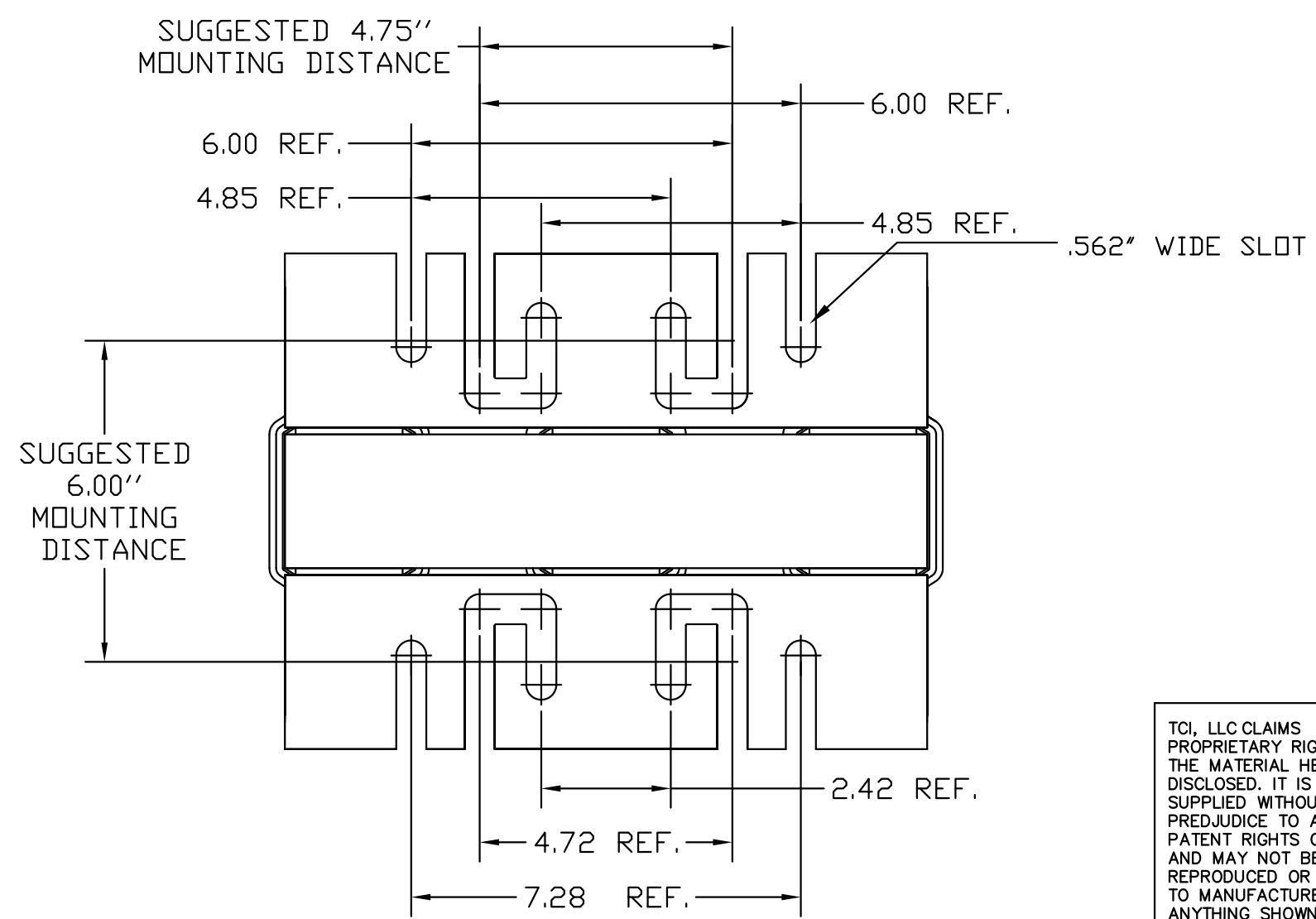
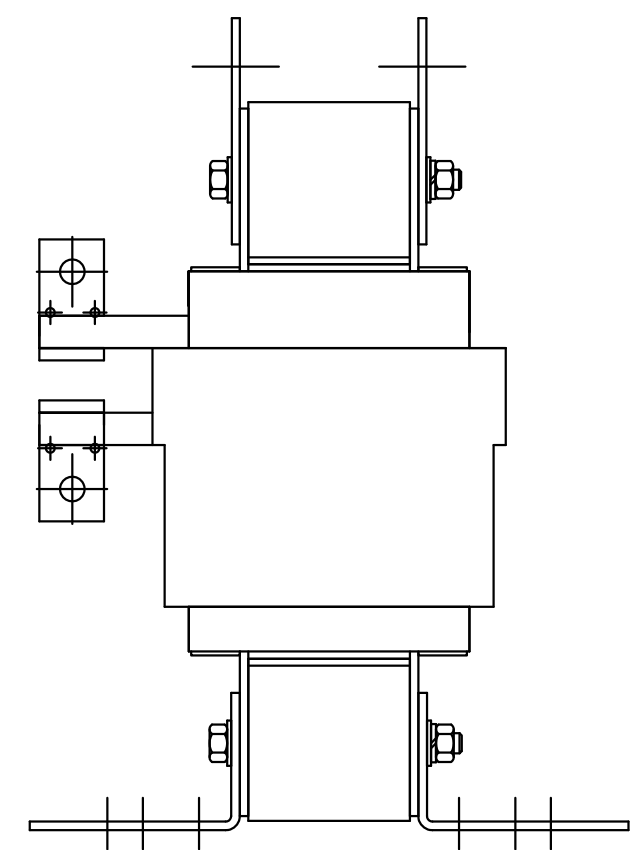
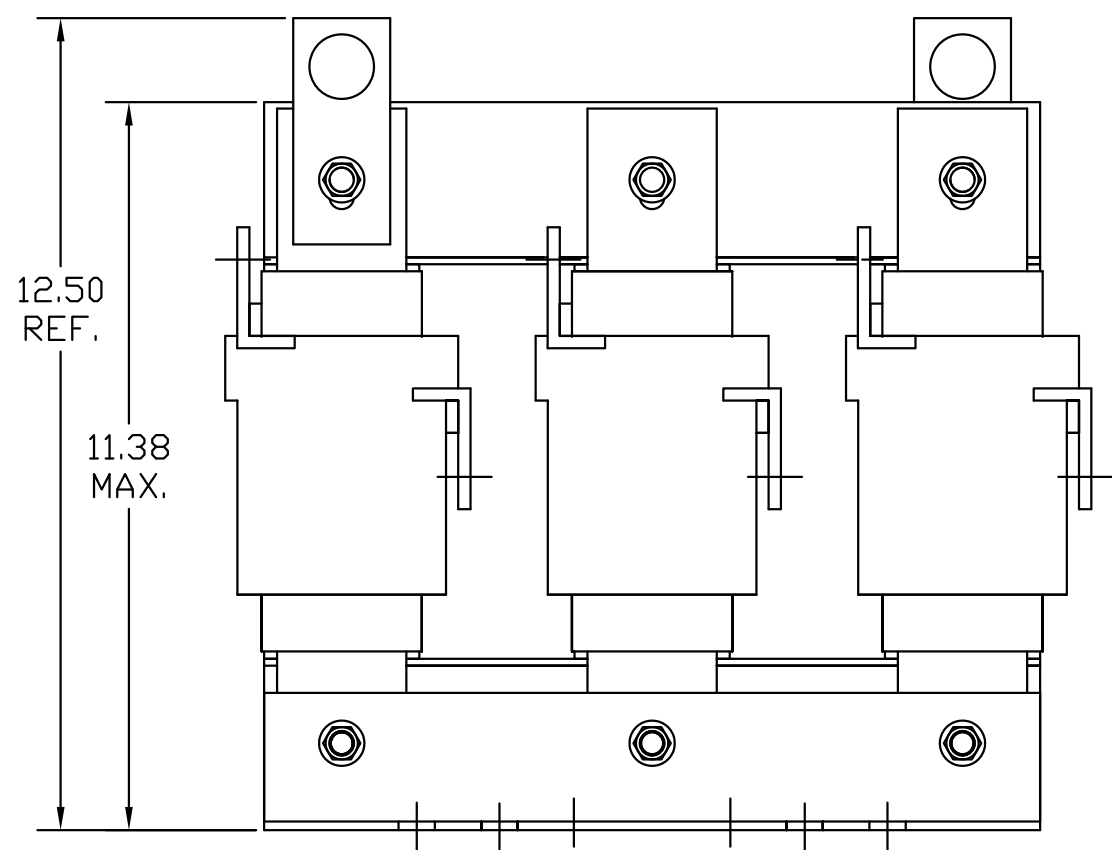
TRANS-COIL, INC
MILWAUKEE WI
WWW.transcoil.com
800-824-8282

KTR Tuning Reactor
CATALOG#
3PH, 60Hz, 600V Max, --- Amps
40C Amb Max, 155C Rise

UL[®] US[®] SA[®] CE

DATE 6/20/10

A1 A2 B1 B2 C1 C2



TCI, LLC CLAIMS PROPRIETARY RIGHTS IN THE MATERIAL HEREIN DISCLOSED. IT IS SUPPLIED WITHOUT PREJUDICE TO ANY PATENT RIGHTS OF TCI AND MAY NOT BE REPRODUCED OR USED TO MANUFACTURE ANYTHING SHOWN THEREIN WITHOUT WRITTEN PERMISSION FROM TCI.

NO	AS RELEASED	10/25/10	DSW	TOLERANCES (EXCEPT AS NOTED)
NO	REVISION	DATE	BY	DECIMAL
				.XX ± .03
				.XXX ± .01
				FRACTIONAL ± 1/32
				ANGULAR ± 1/2°

TCI W132 N10611 Grant Drive
Germanstown, WI 53022

KTR53L55HG, TRAP REACTOR
400V, 132kW.

DRN. BY DSW DATE 10/25/10 DWG. NO. 104495DG
SCALE TO FIT SIZE C SHT.1 OF 1