

CATALOG NO	__uH $\begin{matrix} +8\% \\ -2\% \end{matrix}$	__AMPS(A)	APPROX WT-LBS
KTR30L55HG	722	73.3	72

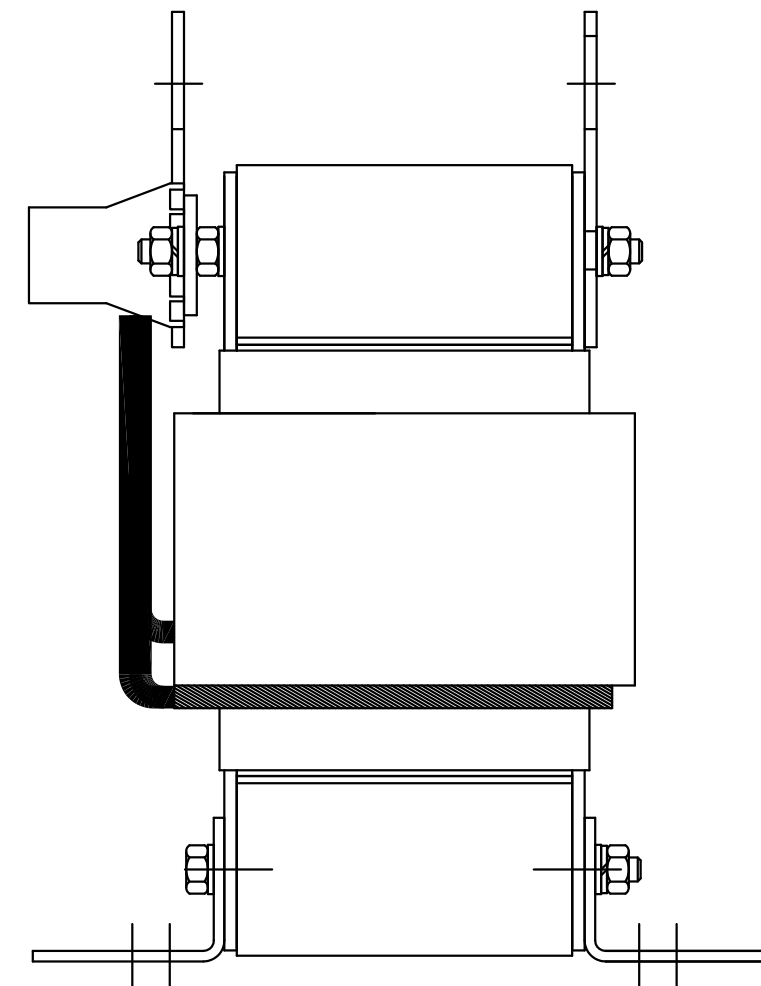
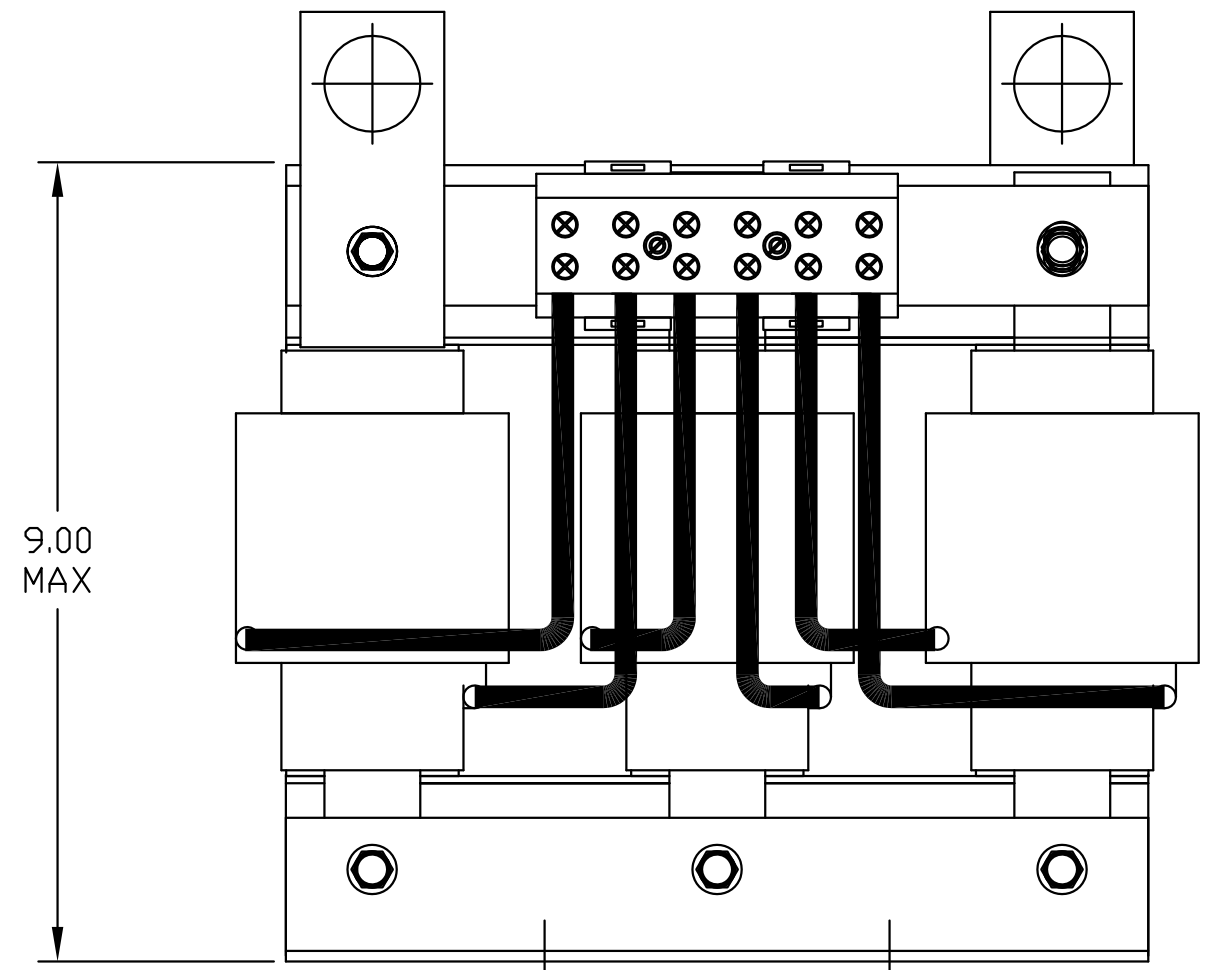
TCI Performance and Protection for Drives.

TRANS-COIL, INC
MILWAUKEE WI
WWW.transcoil.com
800-824-8282

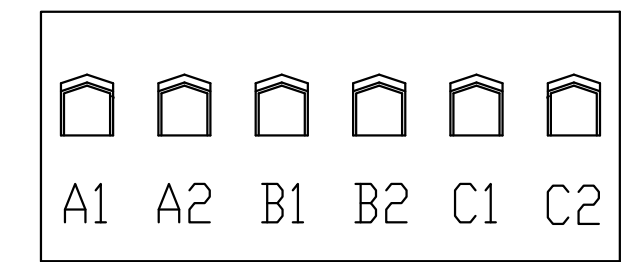
KTR Tuning Reactor
CATALOG#
3PH, 60Hz, 600V Max, --- Amps
40C Amb Max, 155C Rise

RU[®] US SA[®] CE

DATE CODE A1 A2 B1 B2 C1 C2

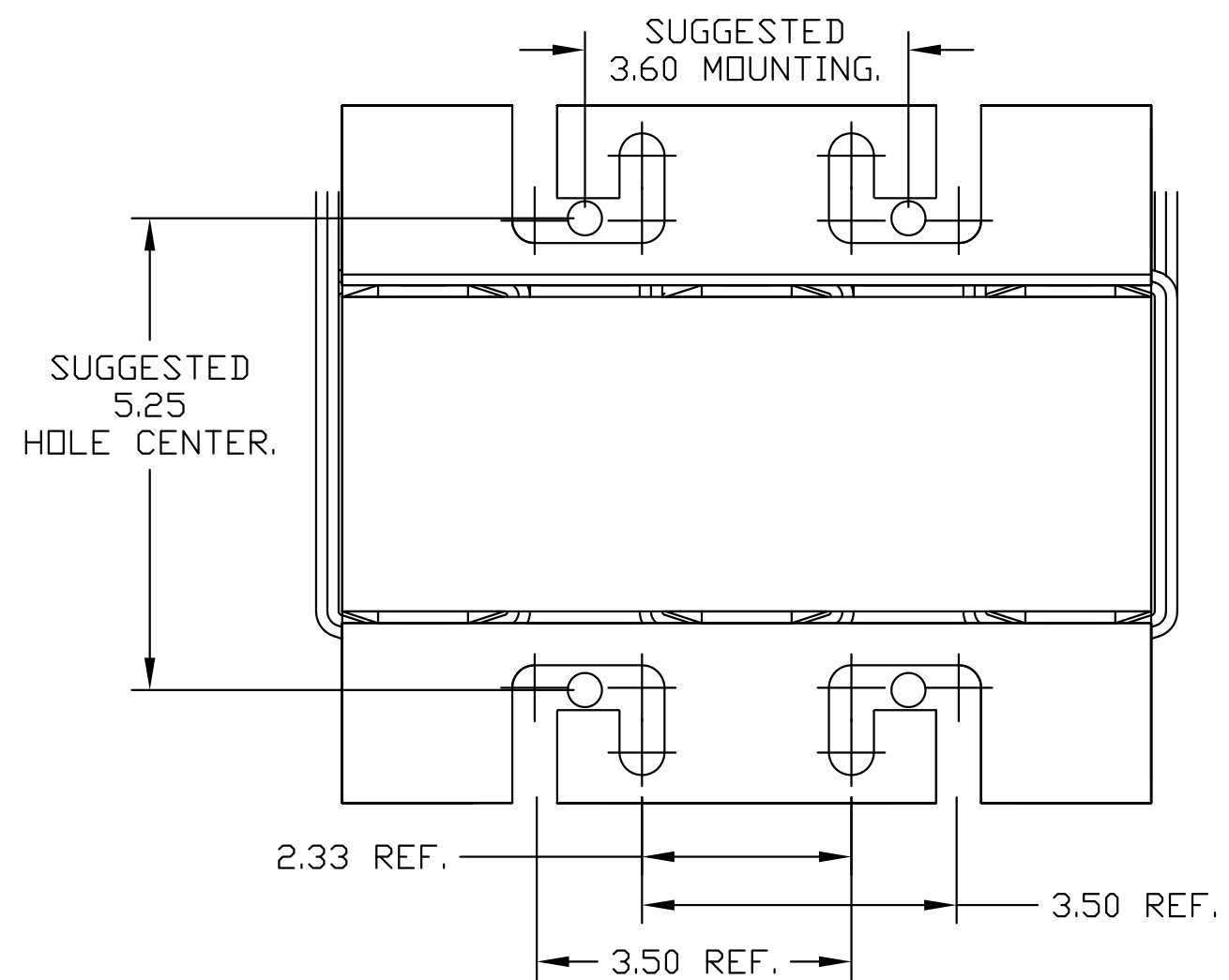


NOTE: A1, A2, B1, B2, C1, C2, TERMINAL BLOCK FOR REFERENCE ONLY.



TERMINAL BLOCK
TORQUE(LB-IN)=CUSTOMER WIRE

35	= 1 AWG THRU 4 AWG
30	= 6 AWG THRU 14 AWG
25	= 16 AWG THRU 20 AWG
20	= 22 AWG



TCI, LLC CLAIMS PROPRIETARY RIGHTS IN THE MATERIAL HEREIN DISCLOSED. IT IS SUPPLIED WITHOUT PREJUDICE TO ANY PATENT RIGHTS OF TCI AND MAY NOT BE REPRODUCED OR USED TO MANUFACTURE ANYTHING SHOWN THEREIN WITHOUT WRITTEN PERMISSION FROM TCI.

AS RELEASED	10/25/10	DSW	TOLERANCES (EXCEPT AS NOTED): DECIMAL .XX ±.03 .XXX ±.01 FRACTIONAL ± 1/32 ANGULAR ± 1/2°	W132 N10611 Grant Drive Germanstown, WI 53022 KTR30L55HG, TRAP REACTOR 400V, 75kW. DRN. BY DSW DATE 10/25/10 DWG. NO. 104492DG SCALE TO FIT SIZE C SHT.1 OF 1
REVISION	DATE	BY		