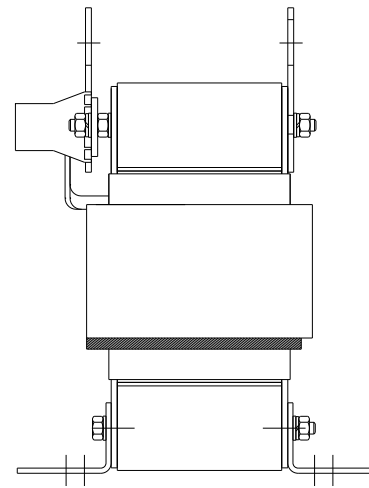
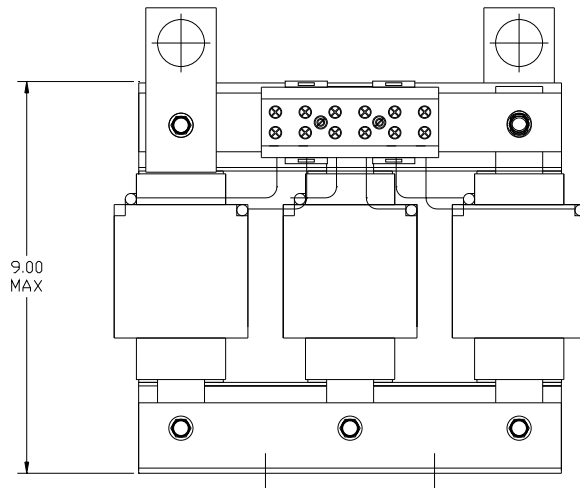
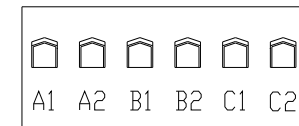


CATALOG NO	__mH $\begin{matrix} +8\% \\ -2\% \end{matrix}$	__AMPS(A)	APPROX WT-LBS
KTR30C65HG	1.441	45.92	85

TRANS-COIL, INC WWW.transcoil.com 800-824-8282	<b>Performance and Protection for Drives.</b> KTR Tuning Reactor CATALOG# _____ 3PH, 60Hz, 600V Max, _____ Amps 40C Amb Max, 155C Rise	

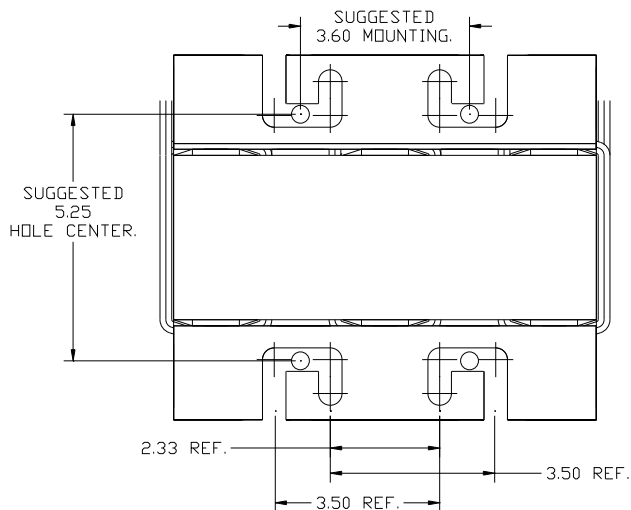


NOTE: A1, A2, B1, B2, C1, C2,  
TERMINAL BLOCK  
FOR REFERENCE ONLY.



TERMINAL BLOCK  
TORQUE(LB-IN)=CUSTOMER WIRE

35 = 1 AWG THRU 4 AWG  
 30 = 6 AWG THRU 14 AWG  
 25 = 16 AWG THRU 20 AWG  
 20 = 22 AWG



TCI, LLC CLAIMS PROPRIETARY RIGHTS IN THE MATERIAL HEREIN DISCLOSED. IT IS SUPPLIED WITHOUT PREJUDICE TO ANY PATENT RIGHTS OF TCI AND MAY NOT BE REPRODUCED OR USED TO MANUFACTURE ANYTHING SHOWN THEREIN WITHOUT WRITTEN PERMISSION FROM TCI.				TOLERANCES (EXCEPT AS NOTED):	W132 N10611 Grant Drive Germantown, WI 53022
				DECIMAL	
				.XX ± .03	
				.XXX ± .01	
				FRACTIONAL	
				± 1/32	
				ANGULAR	
				± 1/2°	
B	2661 ADD CE	3/11/10	DSW		DRN BY DSW DATE 2/24/05 DWG NO 102379DG
NO	REVISION	DATE	BY	SCALE TO FIT	SIZE C SHT. 1 OF 1