

CATALOG NO	__mH ^{+8%} / _{-2%}	__AMPS(A)	APPROX WT-LBS
KTR30A65HG	.922	57.40	80

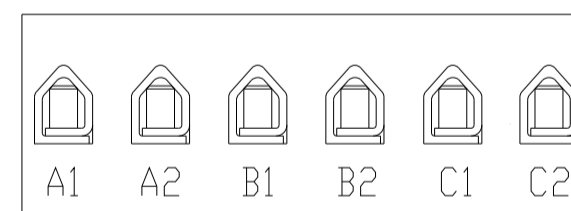
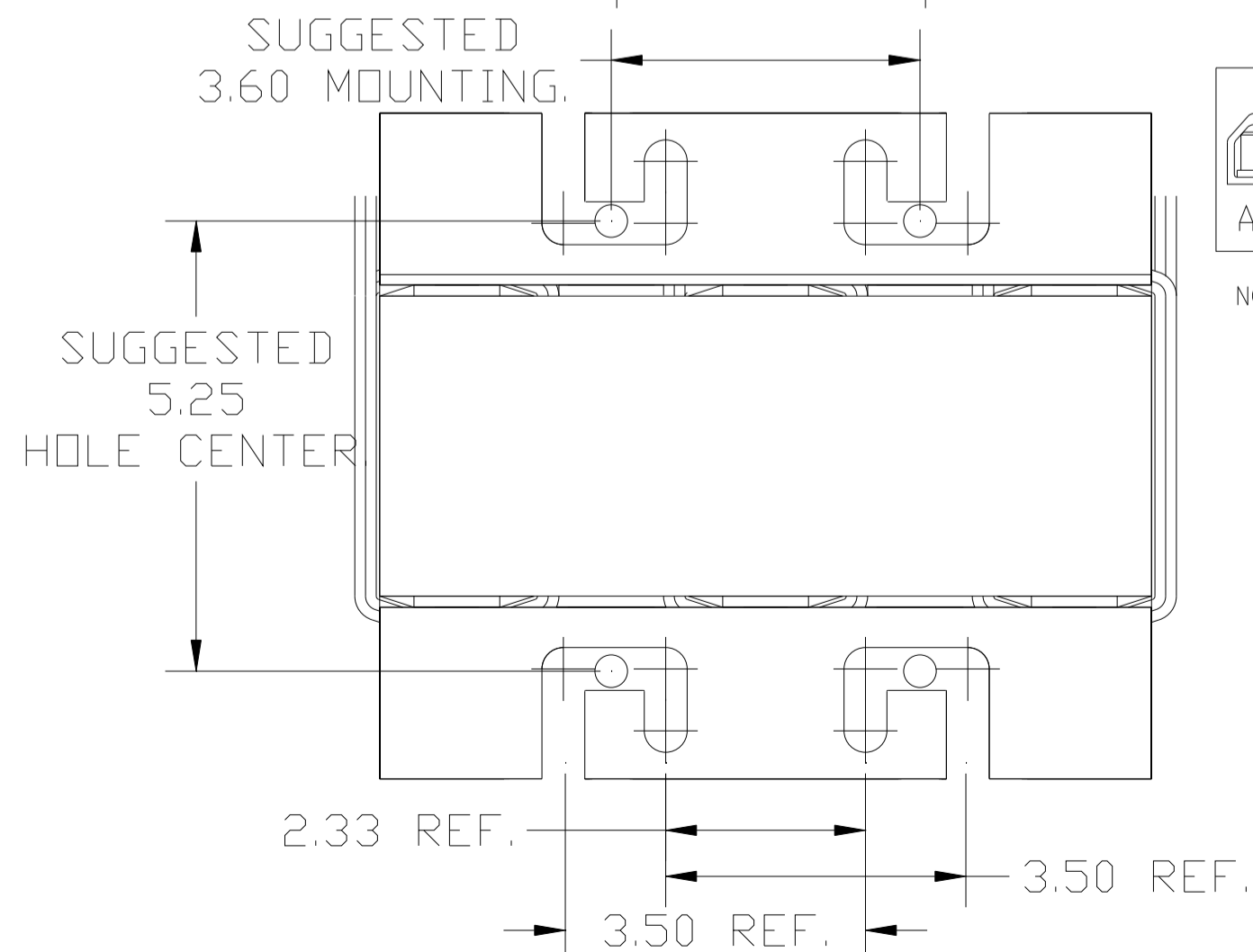
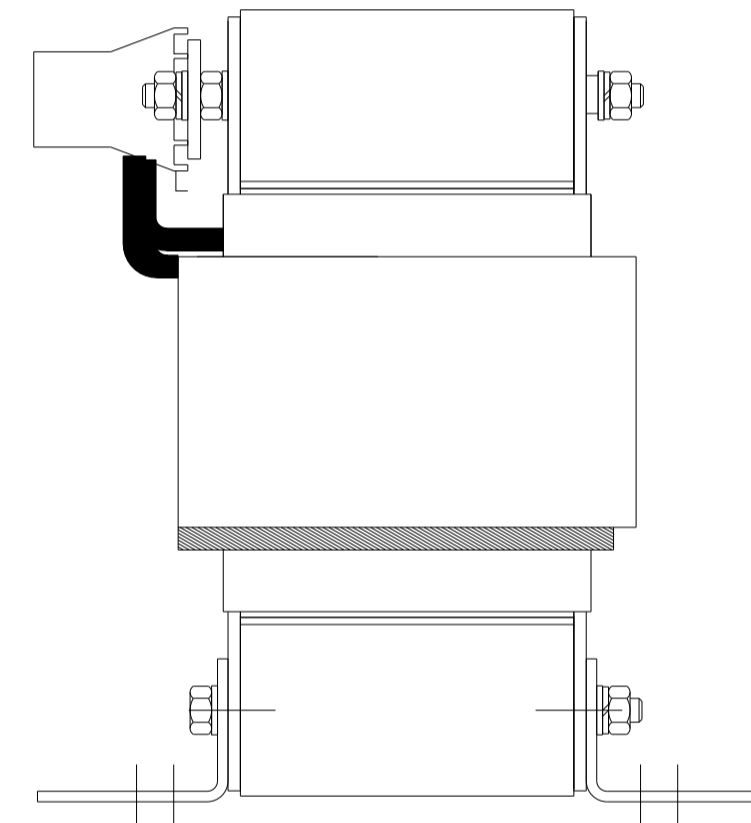
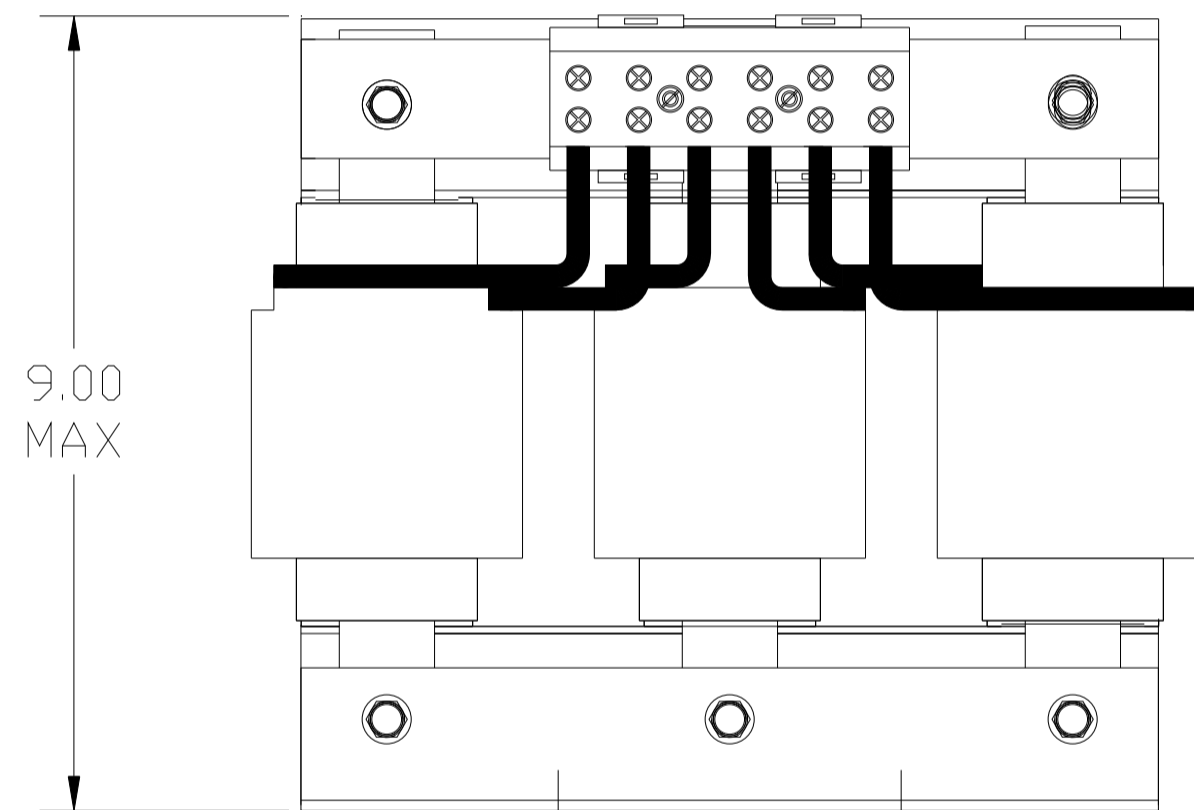
TCI Performance and Protection for Drives.

TRANS-COIL, INC
MILWAUKEE WI
WWW.transcoil.com
800-824-8282

KTR Tuning Reactor
CATALOG#
3PH, 60Hz, 600V Max, --- Amps
40C Amb Max, 155C Rise

UL[®] US SA[®] CE

DATE CODE A1 A2 B1 B2 C1 C2



NOTE: A1, A2, B1, B2, C1, C2, MARKINGS ON TERMINAL BLOCK FOR REFERENCE ONLY.

TERMINAL BLOCK
TORQUE(LB-IN)=CUSTOMER WIRE

35	= 1 AWG THRU 4 AWG
30	= 6 AWG THRU 14 AWG
25	= 16 AWG THRU 20 AWG
20	= 22 AWG

		TOLERANCES (EXCEPT AS NOTED)		TCI 7878 N. 86th STREET MILWAUKEE, WI 53224	
		DECIMAL			
		.XX ± .03		KTR30A65HG TRAP REACTOR 57.40 AMPS, 480V, 100 HP	
		.XXX ± .01			
		FRACTIONAL		DRN BY DSW DATE 02/02/05 DWG. NO. 102297DG	
		± 1/32			
C 2661 ADD CE TO LABEL		3/11/10	DSW	SCALE TO FIT APRVD. C	
NO REVISION		DATE	BY		
		ANGULAR ± 1/2°		SHT. 1 OF 1	