

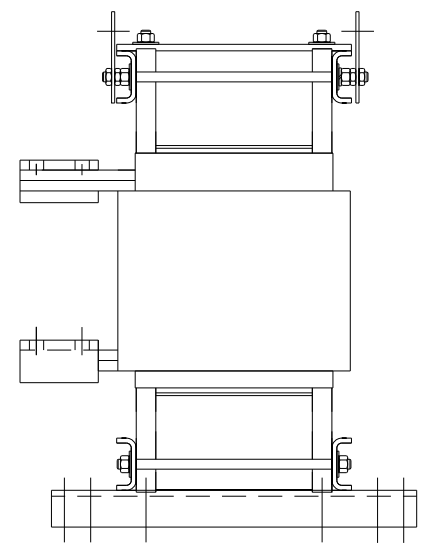
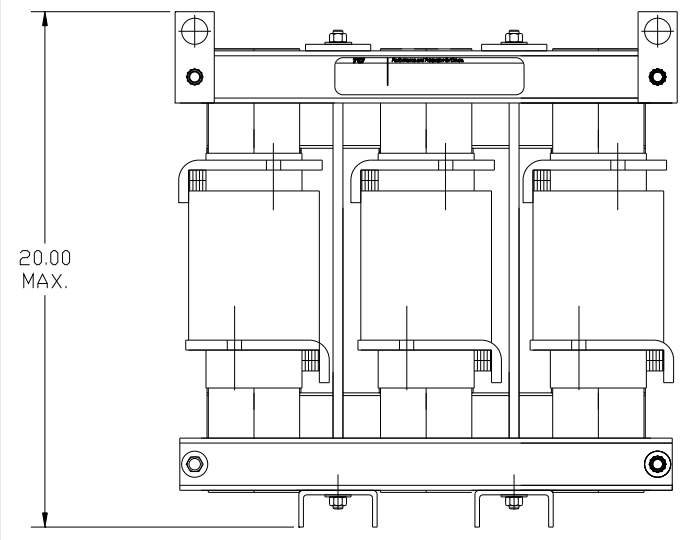
CATALOG NO	__mH ^{+8%} / _{-2%}	__AMPS(A)	APPROX WT-LBS
KTR270C65HG	.160	413.3	520


TRANS-COIL, INC
 WWW.transcoil.com
 800-824-8282

Performance and Protection for Drives.
 KTR Tuning Reactor
 CATALOG#
 3PH, 60Hz, 600V Max, --- Amps
 40C Amb Max, 155C Rise

RU[®] US[®] CE

DATE CODE A1 A2 B1 B2 C1 C2



<p>TCL, LLC CLAIMS PROPRIETARY RIGHTS IN THE MATERIAL HEREIN DISCLOSED. IT IS SUPPLIED WITHOUT PREJUDICE TO ANY PATENT RIGHTS OF TCL AND MAY NOT BE REPRODUCED OR USED TO MANUFACTURE ANYTHING SHOWN THEREIN WITHOUT WRITTEN PERMISSION FROM TCL.</p>				TOLERANCES (EXCEPT AS NOTED)	 <p>w132 N10611 Grant Drive Germantown, WI 53022</p> <p>TRAP REACTOR KTR270C65HG, 600V, 900HP</p> <p>DRN BY DSW DATE 05/05/05 DWG NO. B 102673DG</p> <p>SCALE TO FIT SIZE B SHT. 1 OF 1</p>
				DECIMAL	
				.XX ± .03	
				.XXX ± .01	
				FRACTIONAL	
	B 2661 ADD CE TO LABEL	3/11/10	DSW	± 1/32	
	NO REVISION	DATE	BY	ANGULAR ± 1/2°	