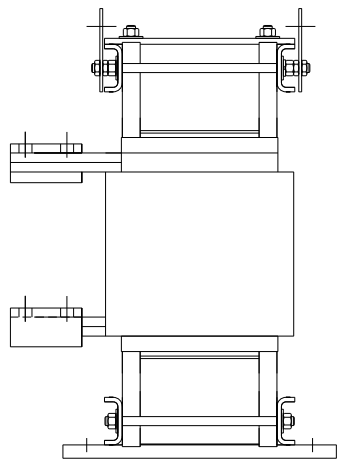
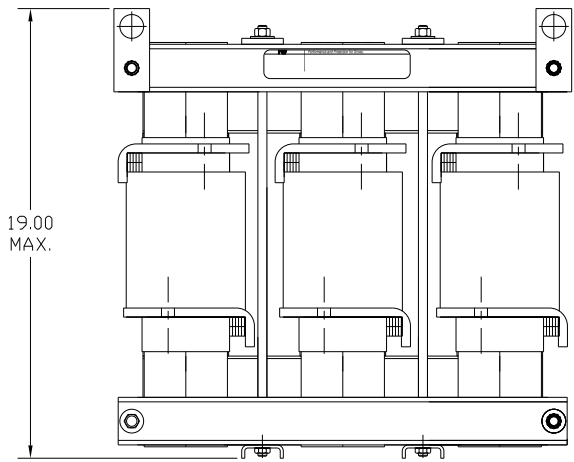


.44 X .75 SLOTS
4 PLACES.

CATALOG NO	__mH $\begin{matrix} +8\% \\ -2\% \end{matrix}$	__AMPS(A)	APPROX WT-LBS
KTR270A65HG	.102	516.58	460

<p>TRANS-COIL, INC MILWAUKEE WI WWW.transcoil.com 800-824-8282</p>	Performance and Protection for Drives.	
	<p>KTR Tuning Reactor</p> <p>CATALOG#</p> <p>3PH, 60Hz, 600V Max, $\begin{matrix} \text{---} \\ \text{---} \end{matrix}$ Amps</p> <p>40C Amb Max, 155C Rise</p>	

.53 DIA HOLE
(12 PLACES)



				TOLERANCES (EXCEPT AS NOTED)	7878 N. 86th STREET MILWAUKEE, WI 53224
				DECIMAL	
				.XX ± .03	
				.XXX ± .01	
				FRACTIONAL	KTR270A65HG TRAP REACTOR 516.58 AMPS, 480V, 900HP
				± 1/32	
A 2661 ADD CE TO LABEL	3/11/10	DSW		ANGULAR	DRN. BY DSW DATE 04/28/05 DWG. NO. 102648DG
NO REVISION	DATE	BY		± 1/2°	SCALE TO FIT APRVD. C SHT.1 OF1