

CATALOG NO	__mH $\begin{matrix} +8\% \\ -2\% \end{matrix}$	__AMPS(A)	APPROX WT-LBS
KTR25A65HG	1.107	47.83	45

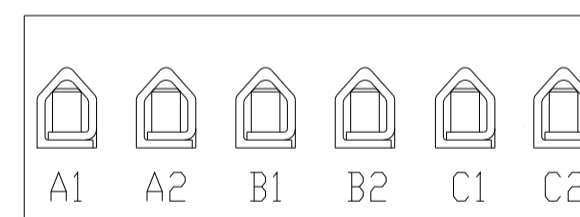
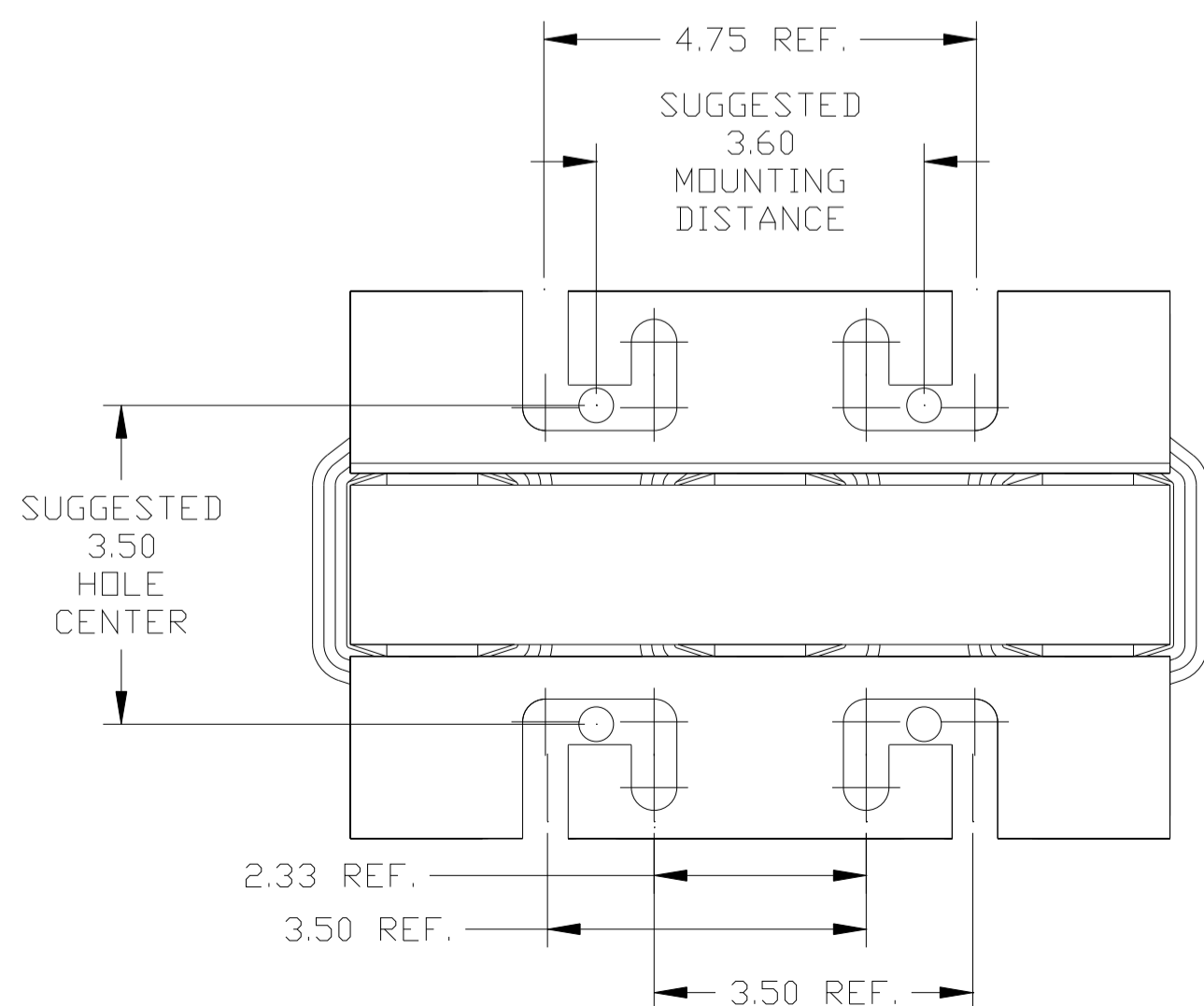
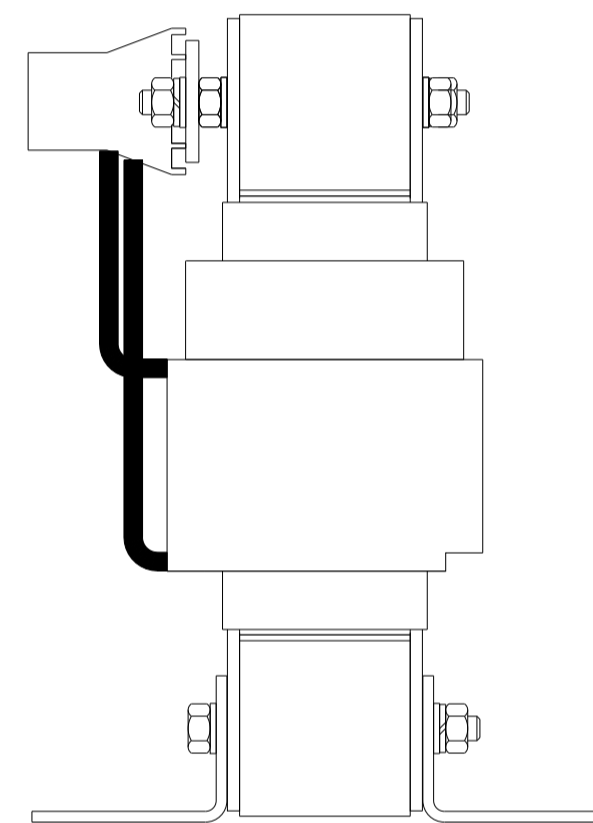
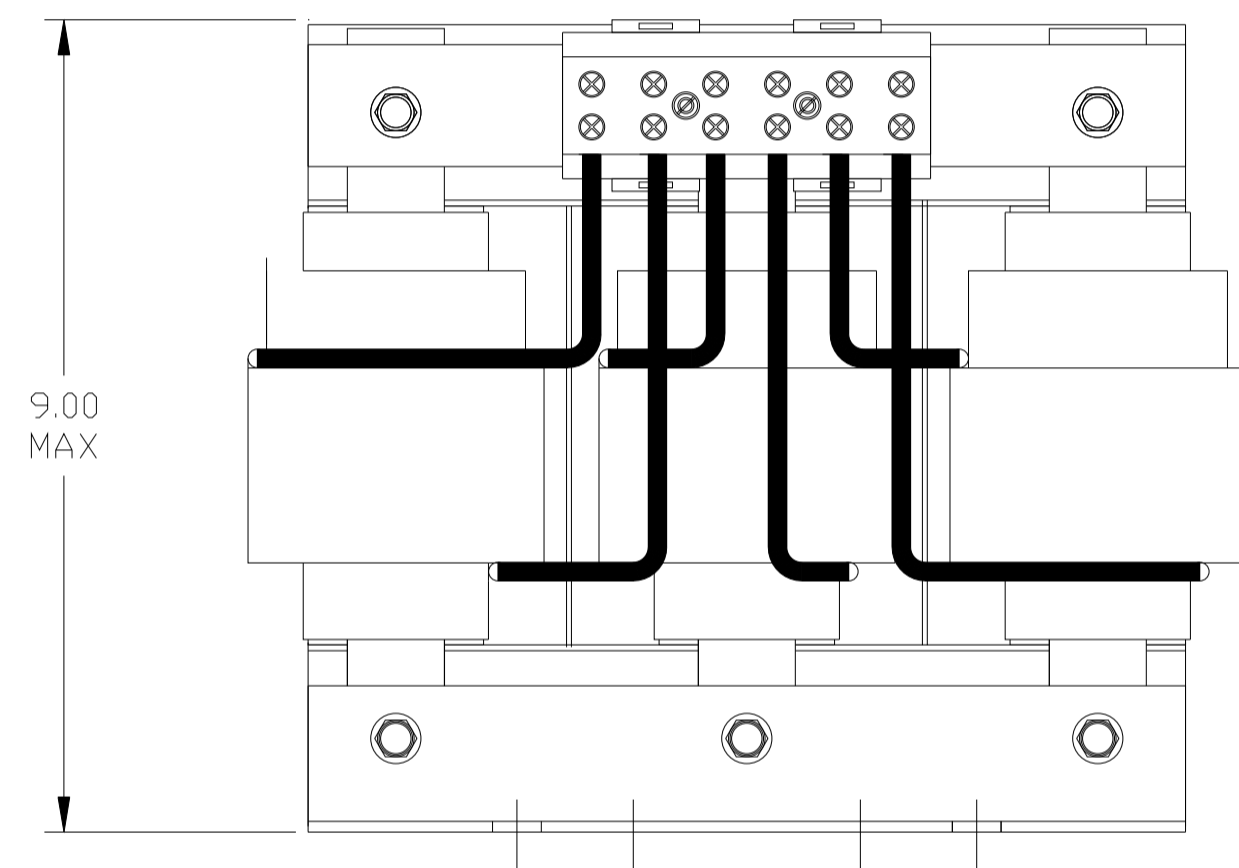
**TCI** Performance and Protection for Drives.

TRANS-COIL, INC  
MILWAUKEE WI  
WWW.transcoil.com  
800-824-8282

KTR Tuning Reactor  
CATALOG# \_\_\_\_\_  
3PH, 60Hz, 600V Max, --- Amps  
40C Amb Max, 155C Rise

**UL** **US** **SA** **CE**

DATE CODE A1 A2 B1 B2 C1 C2



NOTE: A1, A2, B1, B2, C1, C2, MARKINGS ON TERMINAL BLOCK FOR REFERENCE ONLY.

TERMINAL BLOCK	
TORQUE(LB-IN)=CUSTOMER WIRE	
35	= 1 AWG THRU 4 AWG
30	= 6 AWG THRU 14 AWG
25	= 16 AWG THRU 20 AWG
20	= 22 AWG

		TOLERANCES (EXCEPT AS NOTED)		<b>TCI</b> 7878 N. 86th STREET MILWAUKEE, WI 53224	
		DECIMAL			
		.XX ± .03		KTR25A65HG TRAP REACTOR 47.83 AMPS, 480V, 75 HP	
		.XXX ± .01			
		FRACTIONAL		DRN BY DSW DATE 02/02/05 DWG. NO. 102296DG	
		± 1/32			
B 2661 ADD CE TO LABEL		3/08/10	DSW	SCALE TO FIT	
NO REVISION		DATE	BY		
		ANGULAR ± 1/2°		APRVD. C	