

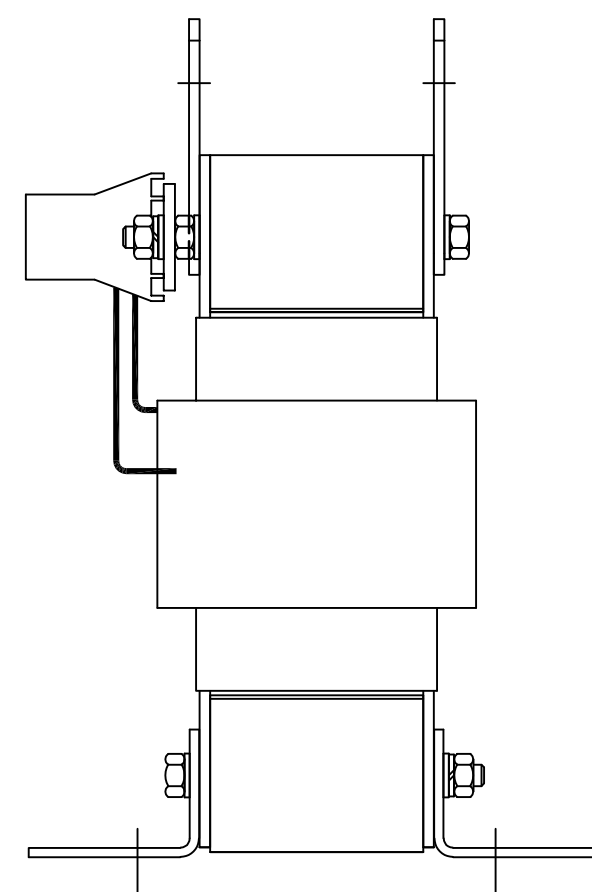
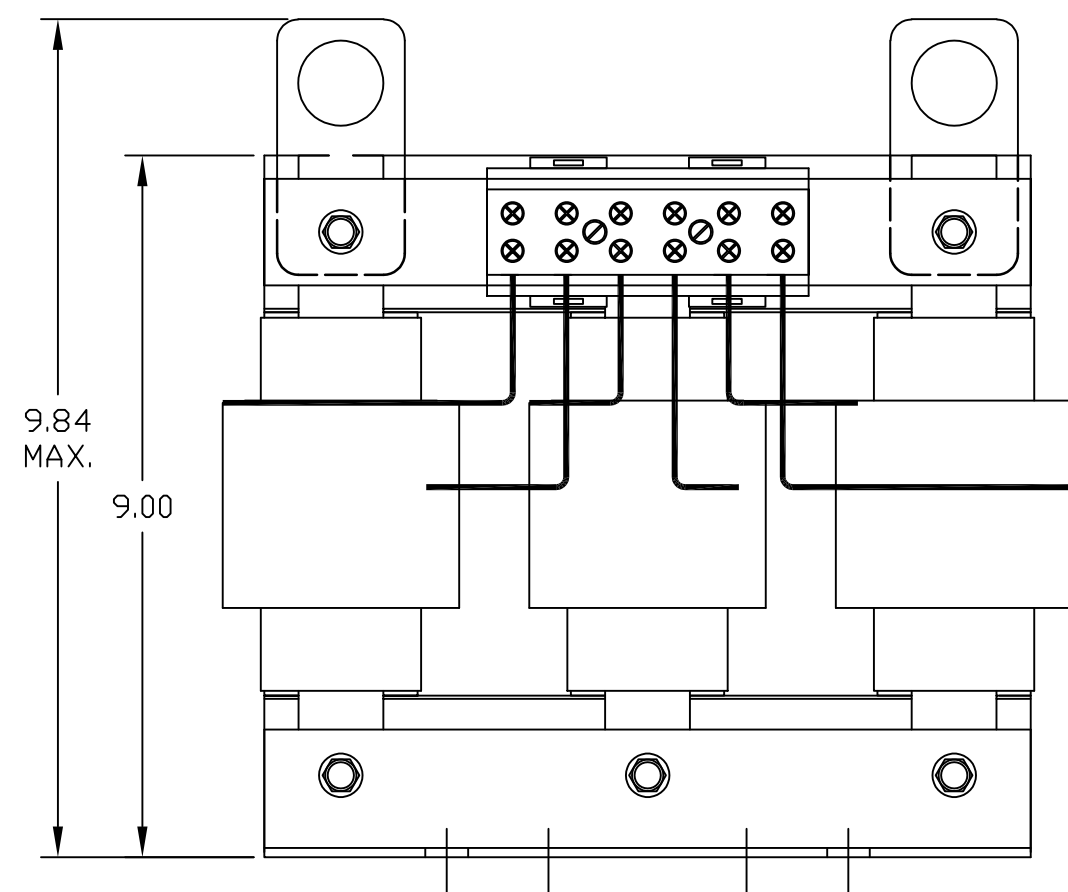
60 Hz				
CATALOG NO	VOLTS(V.)	--uH $\begin{matrix} +8\% \\ -2\% \end{matrix}$	--AMPS(A)	APPROX WT-LBS
KTR22L55HG	34.56	993	53.3	52

**TCI**  
 TRANS-COIL, INC  
 MILWAUKEE WI  
 WWW.transcoil.com  
 800-824-8282

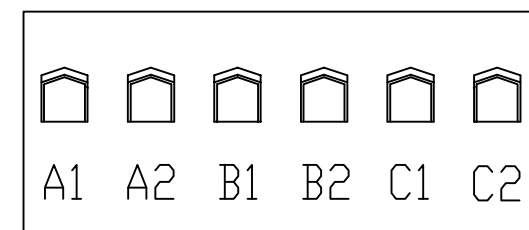
**Performance and Protection for Drives.**  
 KTR Tuning Reactor  
 CATALOG#  
 3PH, 60Hz, 600V Max, --- Amps  
 40C Amb Max, 155C Rise

**RU<sup>®</sup> SA<sup>®</sup> CE**

DATE CODE

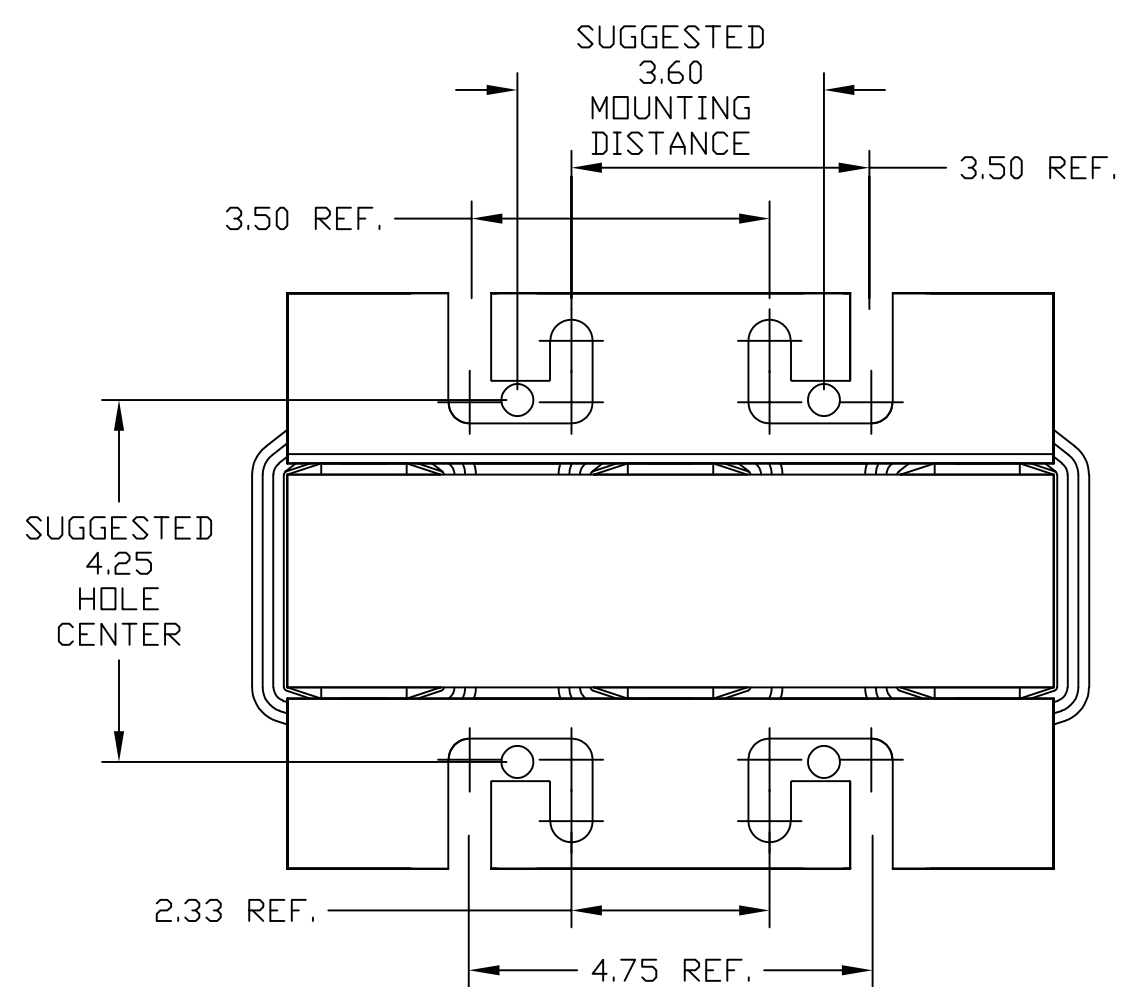


NOTE: A1, A2, B1, B2, C1, C2,  
 TERMINAL BLOCK  
 FOR REFERENCE ONLY.



TERMINAL BLOCK  
 TORQUE(LB-IN)=CUSTOMER WIRE

35 = 1 AWG THRU 4 AWG  
 30 = 6 AWG THRU 14 AWG  
 25 = 16 AWG THRU 22 AWG



STRIP-1.8      2.5 STACK

HI-POT VOLT	DIP
2650	468-2

HOLE TOL. +/- .005

THE INFORMATION AND DESIGNS CONTAINED IN THIS DRAWING ARE CONFIDENTIAL AND THE PROPRIETARY PROPERTY OF ALLIED MOTION TECHNOLOGIES INC. AND ITS SUBSIDIARIES. NEITHER THIS DESIGN NOR ANY INFORMATION CONTAINED IN THIS DRAWING MAY BE REPRODUCED OR DISCLOSED TO OTHERS WITHOUT THE EXPRESS WRITTEN CONSENT OF ALLIED MOTION TECHNOLOGIES INC. AND ITS SUBSIDIARIES.				TOLERANCES (EXCEPT AS NOTED)	W132 N10611 Grant Drive Germantown, WI 53022 © TCI, 2021
				DECIMAL	
				.XX ± .03	
				.XXX ± .010	
	B	5998, Added lift rings	8/15/22	JSG	FRACTIONAL
	A	As Built	7/3/18	JRN	± 1/32
	NO	REVISION	DATE	BY	ANGULAR
					± 1°

DRN. BY	JRN	DATE	7/03/18	DWG. NO.	104491DG
SCALE	1=1	SIZE	C	SHT. 1 OF 1	