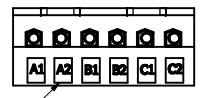
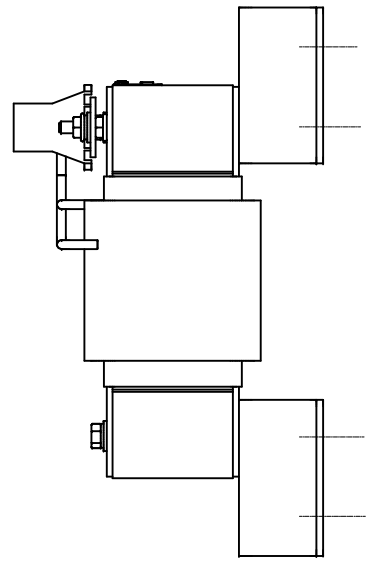
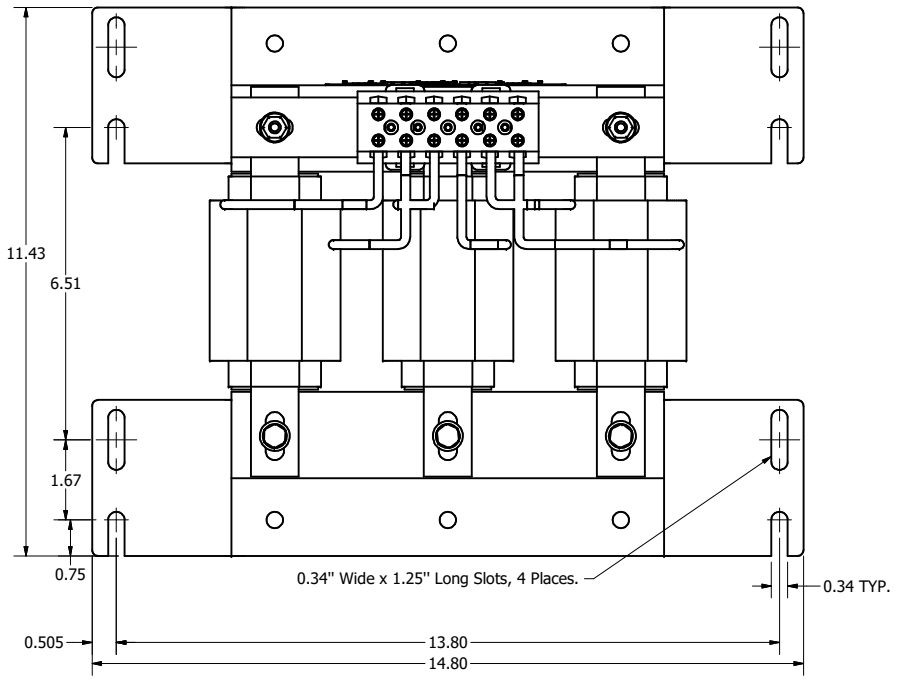
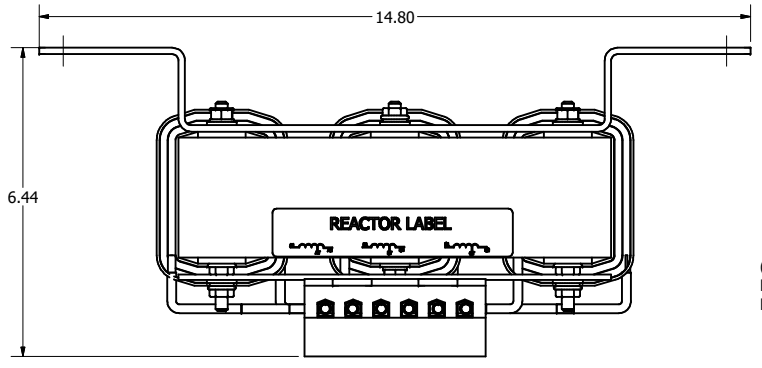
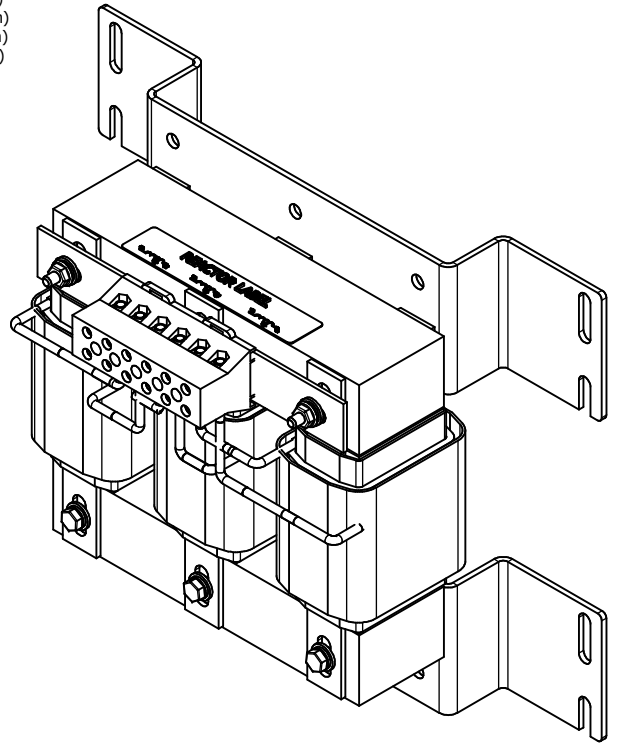


TCI Part Number	Horsepower (HP)	Amps	--uH +8%/-2%	Approx Weight (LBS)
KTR21A55HGX1	75	39.8	1590	65

Wire Range: 1- 4 AWG. Torque : 35 IN-LBS (3.95 Nm)
 6- 14 AWG. Torque : 30 IN-LBS (3.39 Nm)
 16- 20 AWG. Torque : 25 IN-LBS (2.28 Nm)
 22 AWG. Torque : 20 IN-LBS (2.26 Nm)



(Customer Connections)
 Markings On Terminal Block
 For Reference Only.



Customer Is Responsible For Installation to Meet All National And Local Electrical Codes. Material(s) Shall be RoHS Compliant

TCI, LLC CLAIMS PROPRIETARY RIGHTS IN THE MATERIAL HEREIN DISCLOSED. IT IS SUPPLIED WITHOUT PREJUDICE TO ANY PATENT RIGHTS OF TCI AND MAY NOT BE REPRODUCED OR USED TO MANUFACTURE ANYTHING SHOWN THEREIN WITHOUT WRITTEN PERMISSION FROM TCI.					TOLERANCES (EXCEPT AS NOTED)	TCI W132 N10611 Grant Drive Germantown, WI 53022 KTR21A55HGX1, Wall Mounted, 39.8A, 3 Phase, 5th Tuning Inductor	DRN BY: JRN DATE: 04/10/19 SCALE: 1/2 DES: C2 SHEET 1 OF 1
					DECIMAL		
					.XX ±.25 .XXX ±.10		
					FRACTIONAL		
	A	AS DESIGNED	04/10/19	JRN	ANGULAR ± 1/16		
	NO	REVISION	DATE	BY	± 1°		