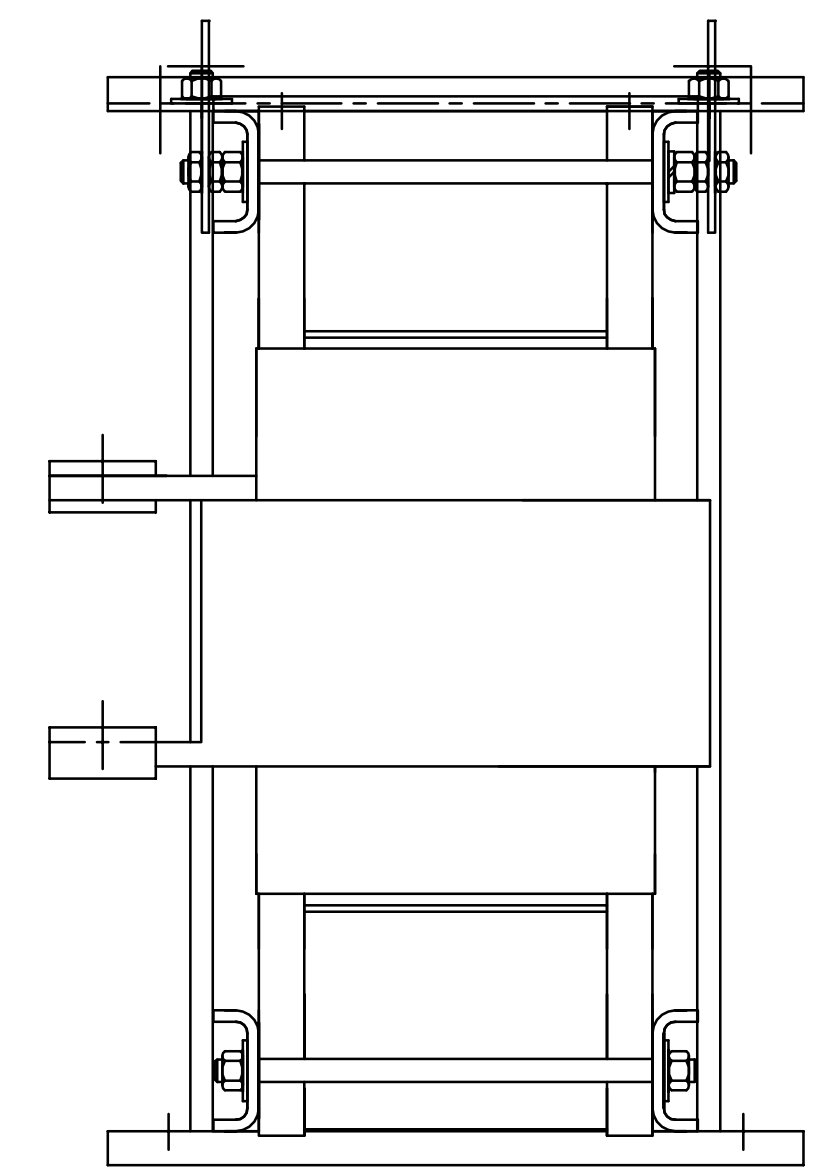
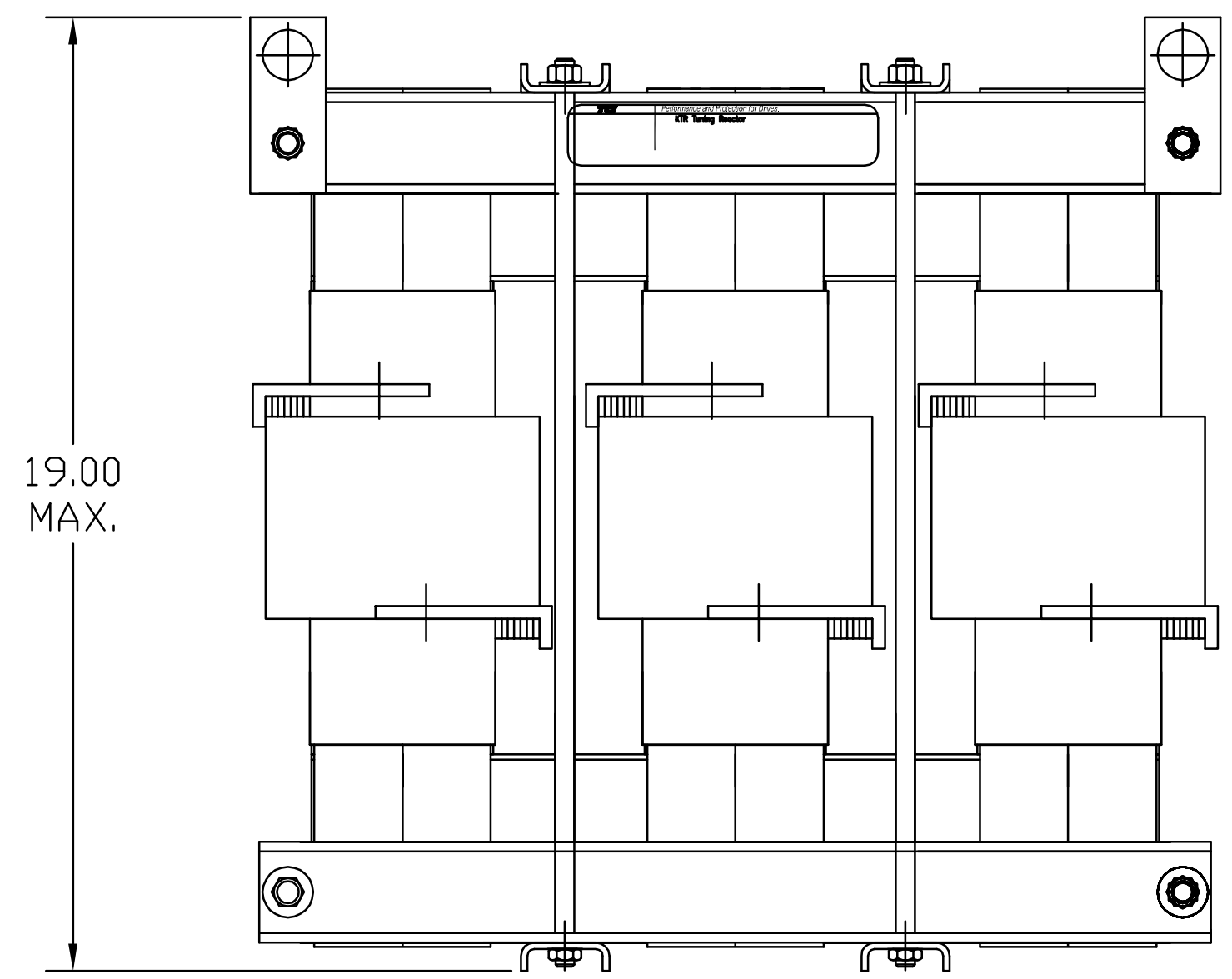


HP	CATALOG NO	--mH ^{+8%} / _{-2%}	--AMPS(A)	APPROX WT-LBS
700	KTR210A65HG	.132	401.78	425

TCI TRANS-COIL, INC MILWAUKEE WI WWW.transcoil.com 800-824-8282 <small>DATE CODE</small>	<i>Performance and Protection for Drives.</i> KTR Tuning Reactor CATALOG# _____ 3PH, 60Hz, 600V Max, --- Amps 40C Amb Max, 155C Rise		



TCI, LLC CLAIMS PROPRIETARY RIGHTS IN THE MATERIAL HEREIN DISCLOSED. IT IS SUPPLIED WITHOUT PREJUDICE TO ANY PATENT RIGHTS OF TCI AND MAY NOT BE REPRODUCED OR USED TO MANUFACTURE ANYTHING SHOWN THEREIN WITHOUT WRITTEN PERMISSION FROM TCI.				TOLERANCES (EXCEPT AS NOTED): DECIMAL	W132 N10611 Grant Drive Germantown, WI 53022	
				.XX ± .03 .XXX ± .01		KTR210A65HG, TRAP REACTOR 480 VOLTS, 401.78 AMPS
	B	2661 ADD CE TO LABEL	3/09/10	DSW	FRACTIONAL ± 1/32	
	A	2565 TOLERANCE CHG.	11/14/08	DSW	ANGULAR ± 1/2°	SCALE TO FIT SIZE C
	NO	REVISION	DATE	BY		SHT.1 OF 1