

CATALOG NO	--mH $\begin{matrix} +8\% \\ -2\% \end{matrix}$	--AMPS(A)	APPROX WT-LBS
KTR20A65HG	1.383	38.26	45

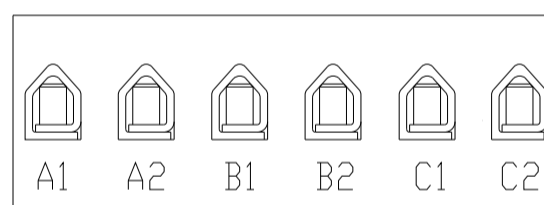
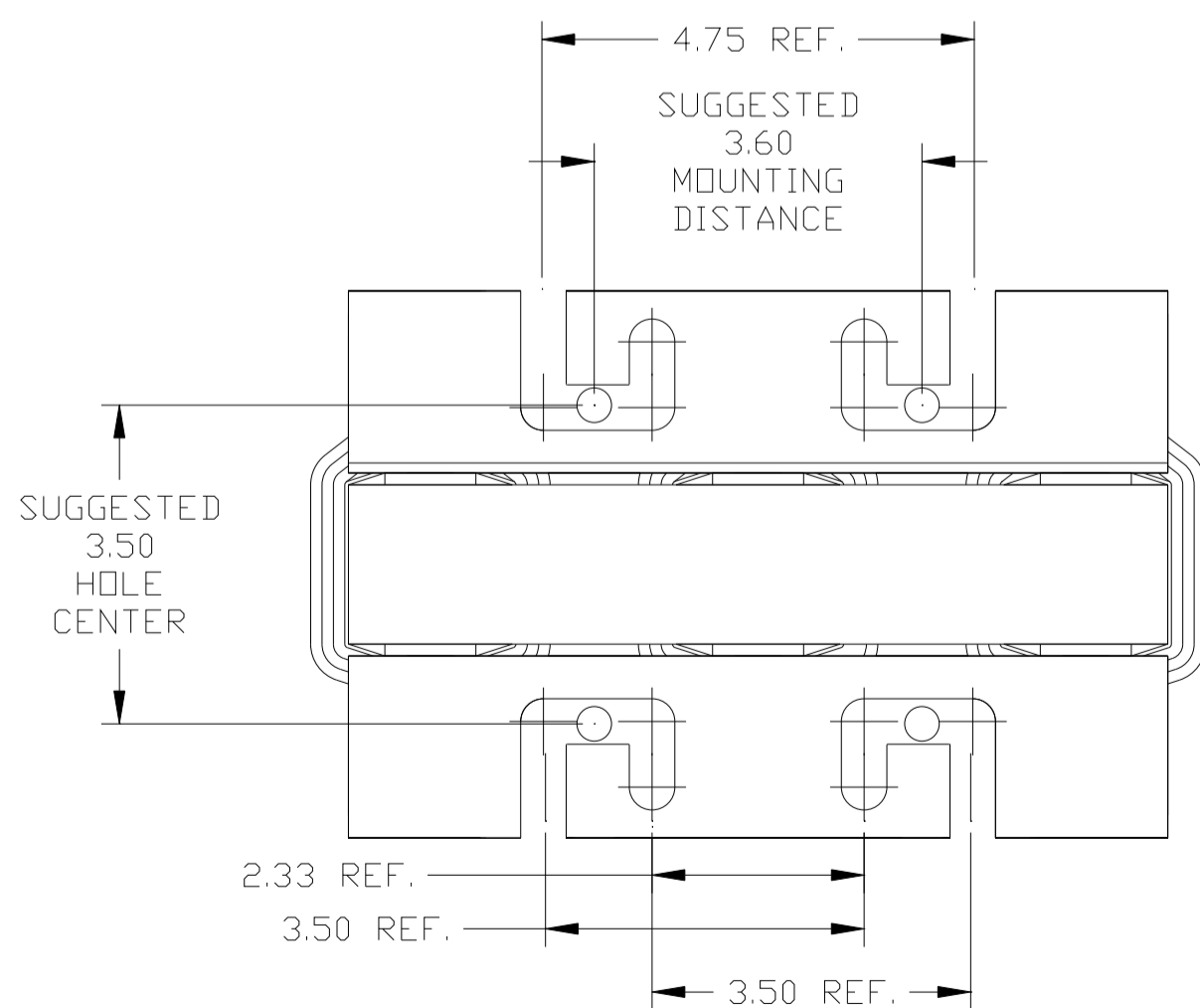
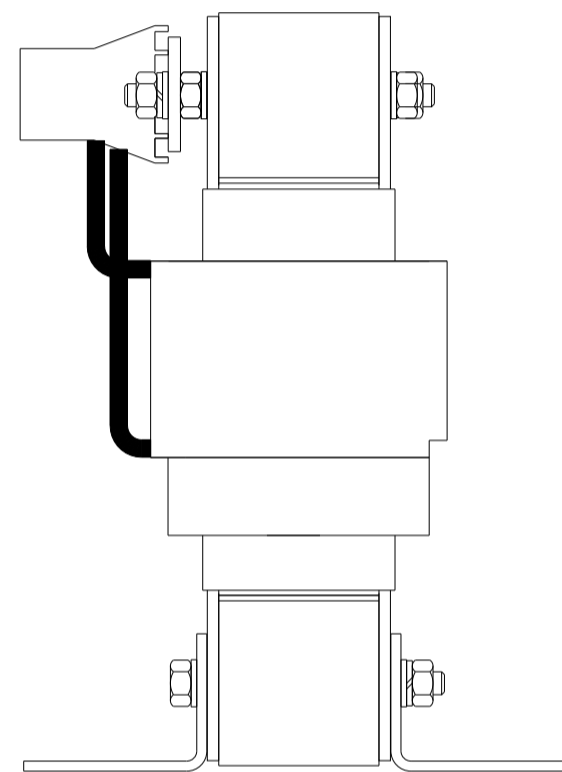
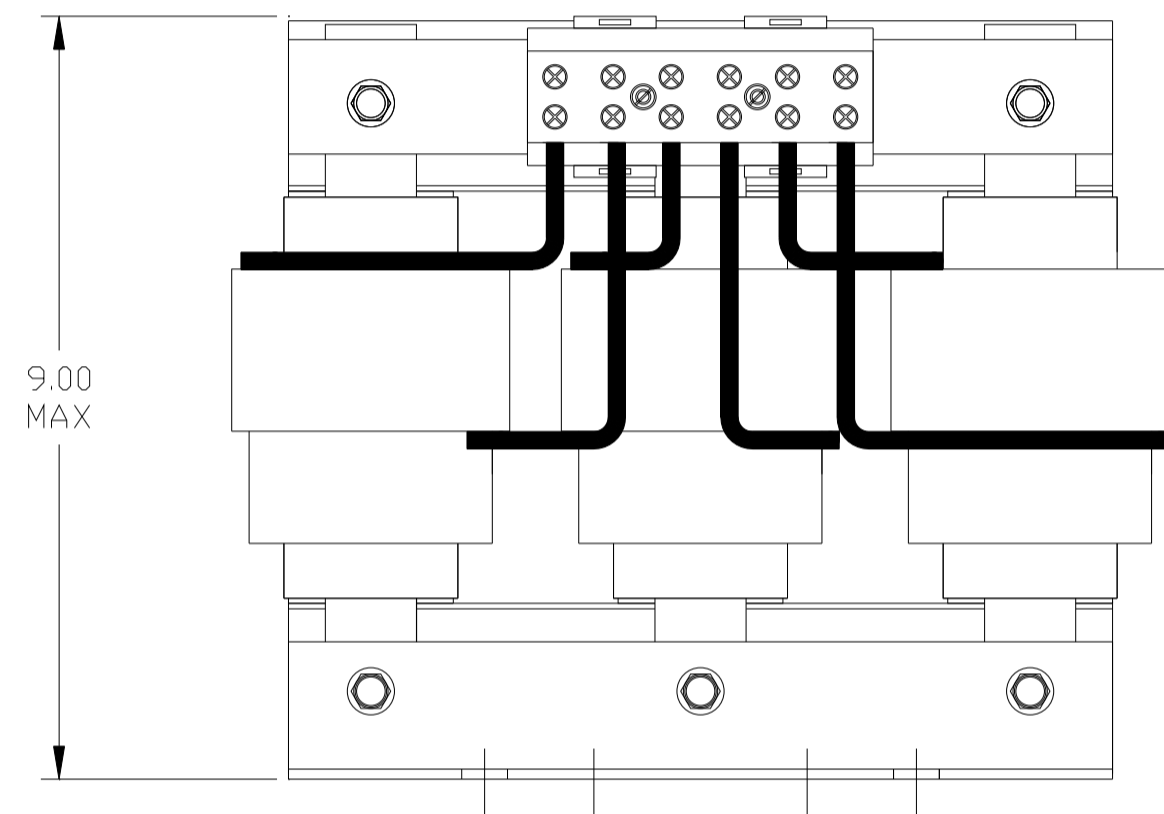
**TCI** *Performance and Protection for Drives.*

TRANS-COIL, INC  
MILWAUKEE WI  
WWW.transcoil.com  
800-824-8282

KTR Tuning Reactor  
CATALOG#  
3PH, 60Hz, 600V Max, --- Amps  
40C Amb Max, 155C Rise

**UL** **US** **SA** **CE**

DATE CODE A1 A2 B1 B2 C1 C2



NOTE: A1, A2, B1, B2, C1, C2, MARKINGS ON TERMINAL BLOCK FOR REFERENCE ONLY.

TERMINAL BLOCK	
TORQUE(LB-IN)=CUSTOMER WIRE	
35	= 1 AWG THRU 4 AWG
30	= 6 AWG THRU 14 AWG
25	= 16 AWG THRU 20 AWG
20	= 22 AWG

			TOLERANCES (EXCEPT AS NOTED)		7878 N. 86th STREET MILWAUKEE, WI 53224	
			DECIMAL			
			.XX ± .03		KTR20A65HG TRAP REACTOR 38.26 AMPS, 480V, 60 HP	
			.XXX ± .01			
			FRACTIONAL		DRN BY DSW DATE 02/02/05 DWG. NO. 102295DG SCALE TO FIT APRVD. C	
			± 1/32			
B	2661 ADD CE TO LABEL	3/08/10	DSW	ANGULAR	± 1/2°	SHT. 1 OF 1