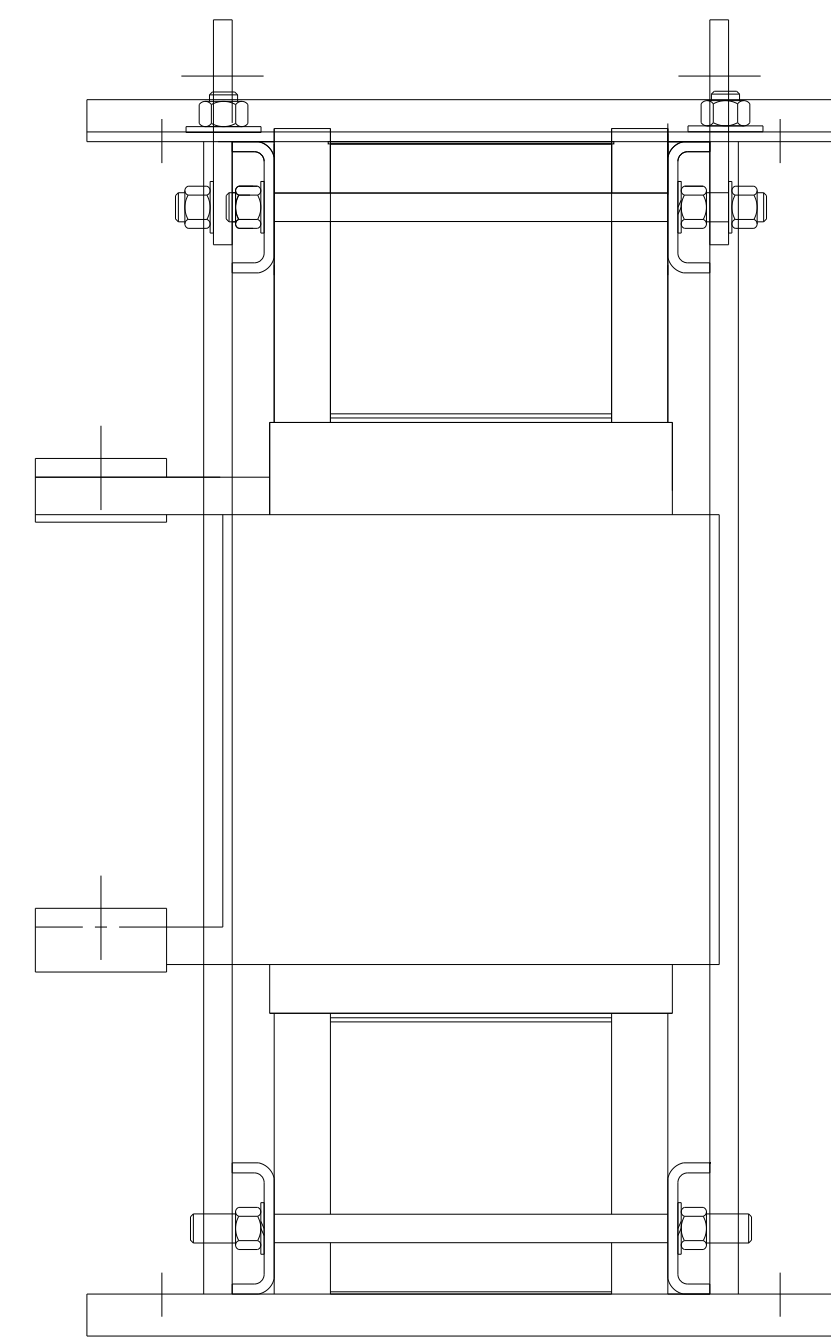
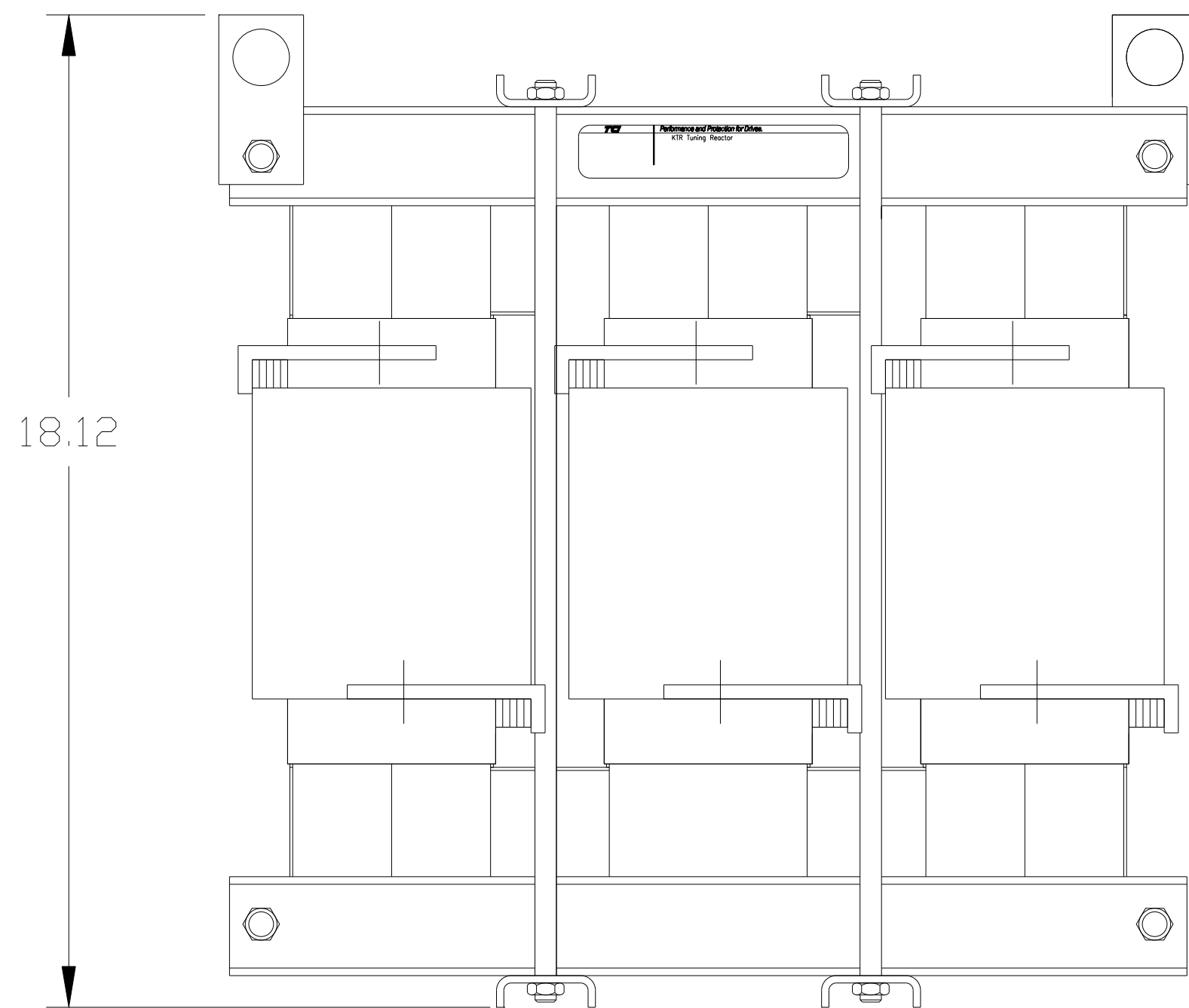
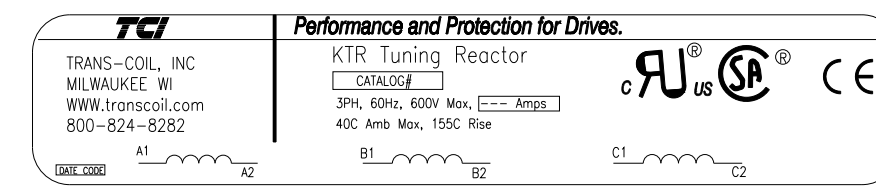


.53 DIA HOLE
6 PLACES.

HP	CATALOG NO	--mH ^{+8%} / _{-2%}	--AMPS(A)	APPROX WT-LBS
600	KTR180A65HG	.154	344.38	295



		TOLERANCES (EXCEPT AS NOTED)		7878 N. 86th STREET MILWAUKEE, WI 53224	
		DECIMAL			
		.XX ± .03		KTR180A65HG, TRAP REACTOR 480 Volts, 344.3 Amps.	
		.XXX ± .01			
		FRACTIONAL		DRN BY DSW DATE 4/27/05 DWG. NO. 102649DG SCALE TO FIT APRVD. C	
		± 1/32			
A	2661 ADD CE TO LABEL	3/09/10	DSW	SHT. 1 OF 1	
NO	REVISION	DATE	BY		
		ANGULAR			
		± 1/2°			