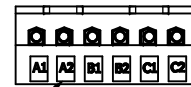
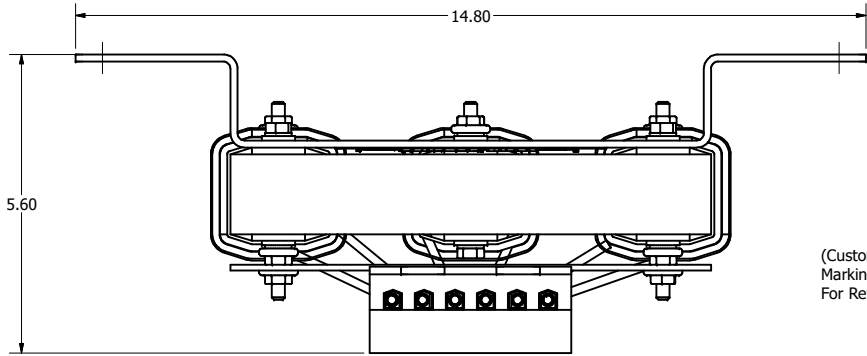
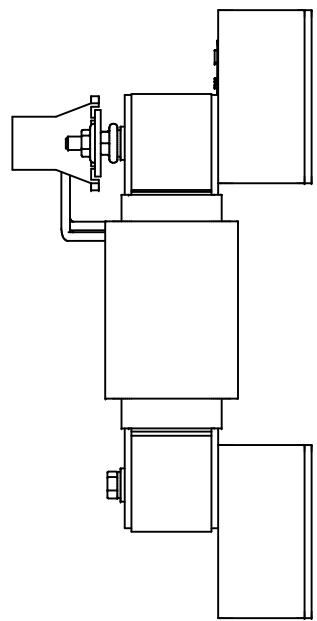
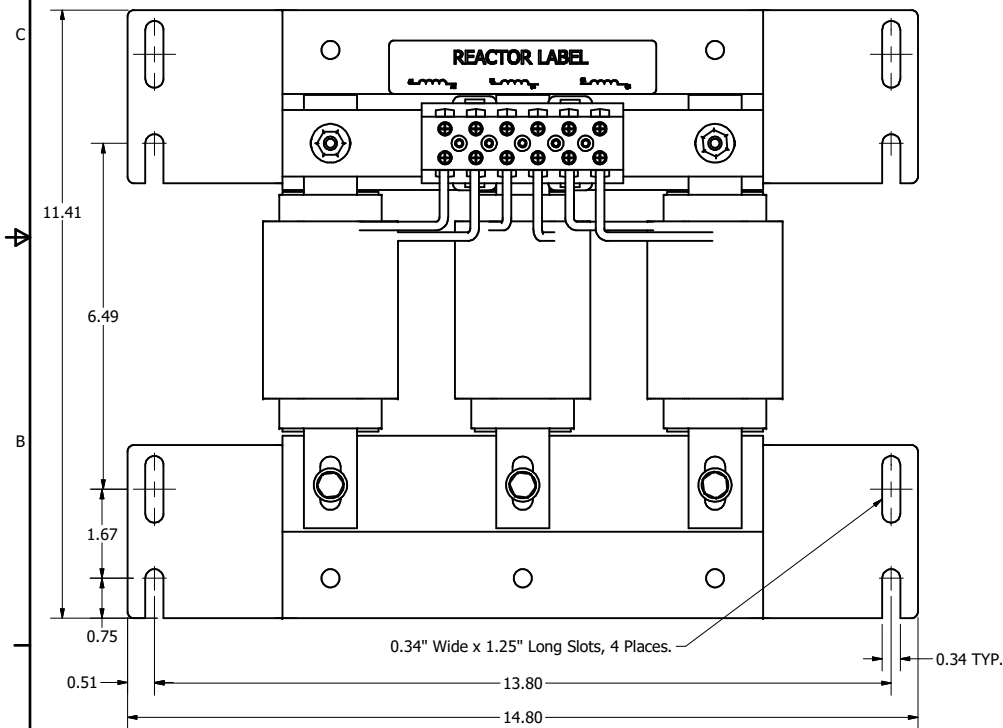
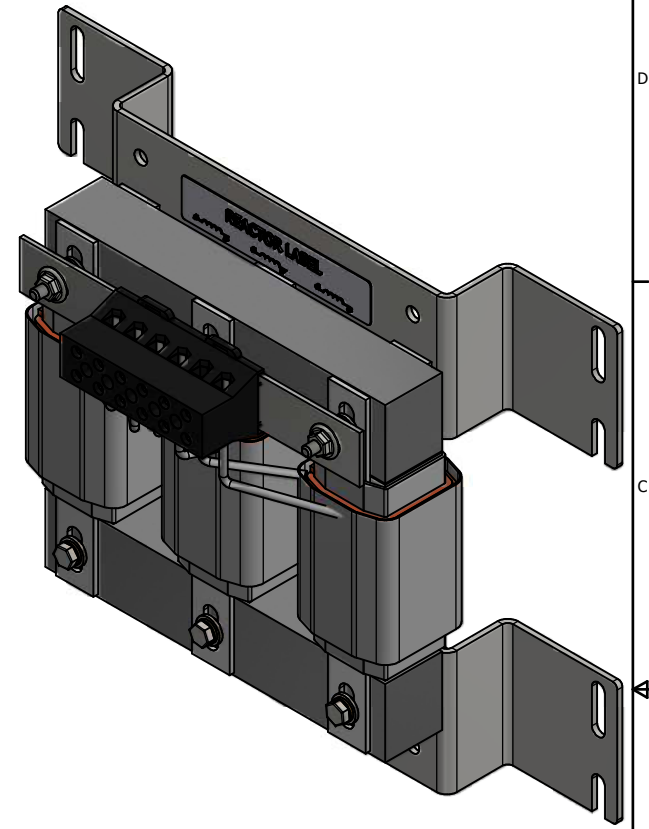


TCI Part Number	Horsepower (HP)	Amps	---uH +8%/-2%	Weight (LBS)
KTR15L55HGX2	50	33.4	1590	40



(Customer Connections)
Markings On Terminal Block
For Reference Only.

Wire Range: 1- 4 AWG. Torque : 35 IN-LBS (3.95 Nm)
6- 14 AWG. Torque : 30 IN-LBS (3.39 Nm)
16- 20 AWG. Torque : 25 IN-LBS (2.28 Nm)
22 AWG. Torque : 20 IN-LBS (2.26 Nm)



Customer Is Responsible For Installation to Meet All National And Local Electrical Codes. Material(s) Shall be RoHS Compliant

TCI, LLC CLAIMS PROPRIETARY RIGHTS IN THE MATERIAL HEREIN DISCLOSED. IT IS SUPPLIED WITHOUT PREJUDICE TO ANY PATENT RIGHTS OF TCI AND MAY NOT BE REPRODUCED OR USED TO MANUFACTURE ANYTHING SHOWN THEREIN WITHOUT WRITTEN PERMISSION FROM TCI.					TOLERANCES (EXCEPT AS NOTED)	TCI W132 N10611 Grant Drive Germantown, WI 53022 KTR15L55HGX2, 14.80" Wall Bracket 400V, 33.4A, 37kW, 50Hz, 3 Phase, Open, 5th Tuning Inductor DRN BY: DSW DATE: 8/8/19 SCALE: 1:1.8 108256DG SHEET 1 OF 1
					DECIMAL	
					.XX ±.25 .XXX ±.10	
					FRACTIONAL ANGULAR ± 1/16 ± 1°	
	A	AS DESIGNED	8/8/19	DSW		
	NO	REVISION	DATE	BY		