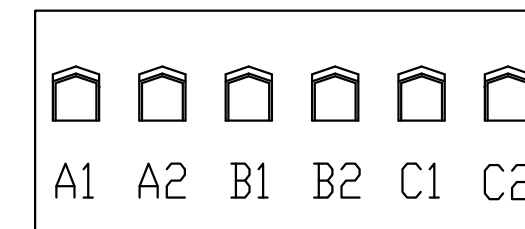
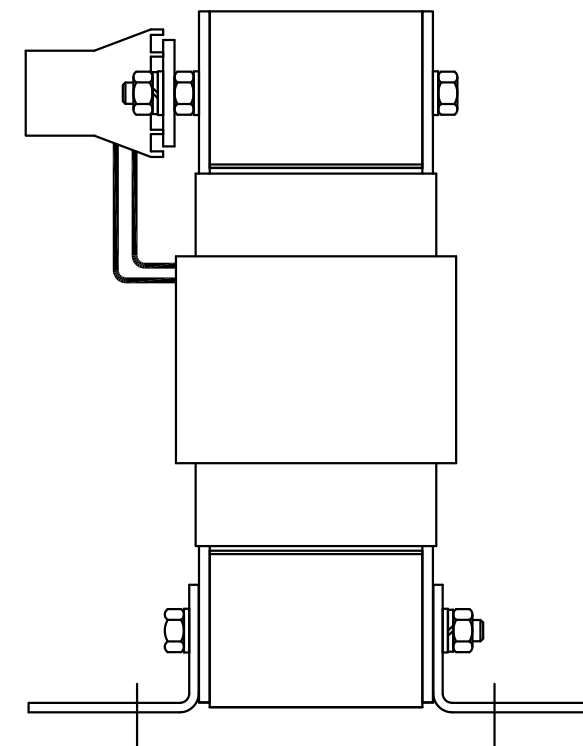
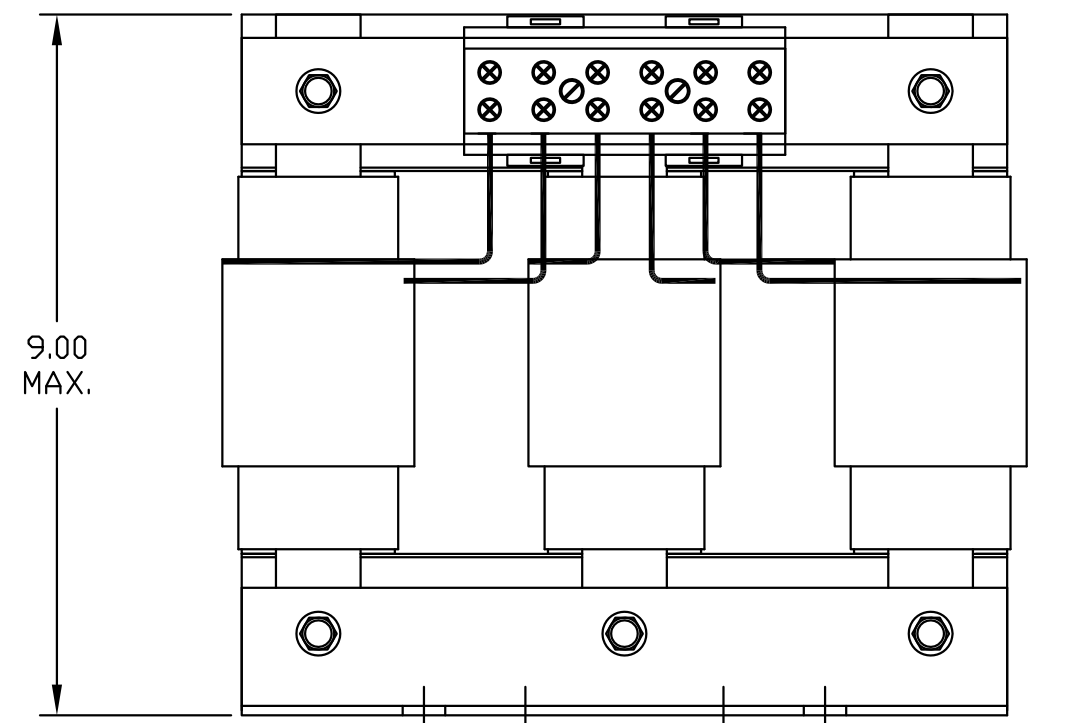


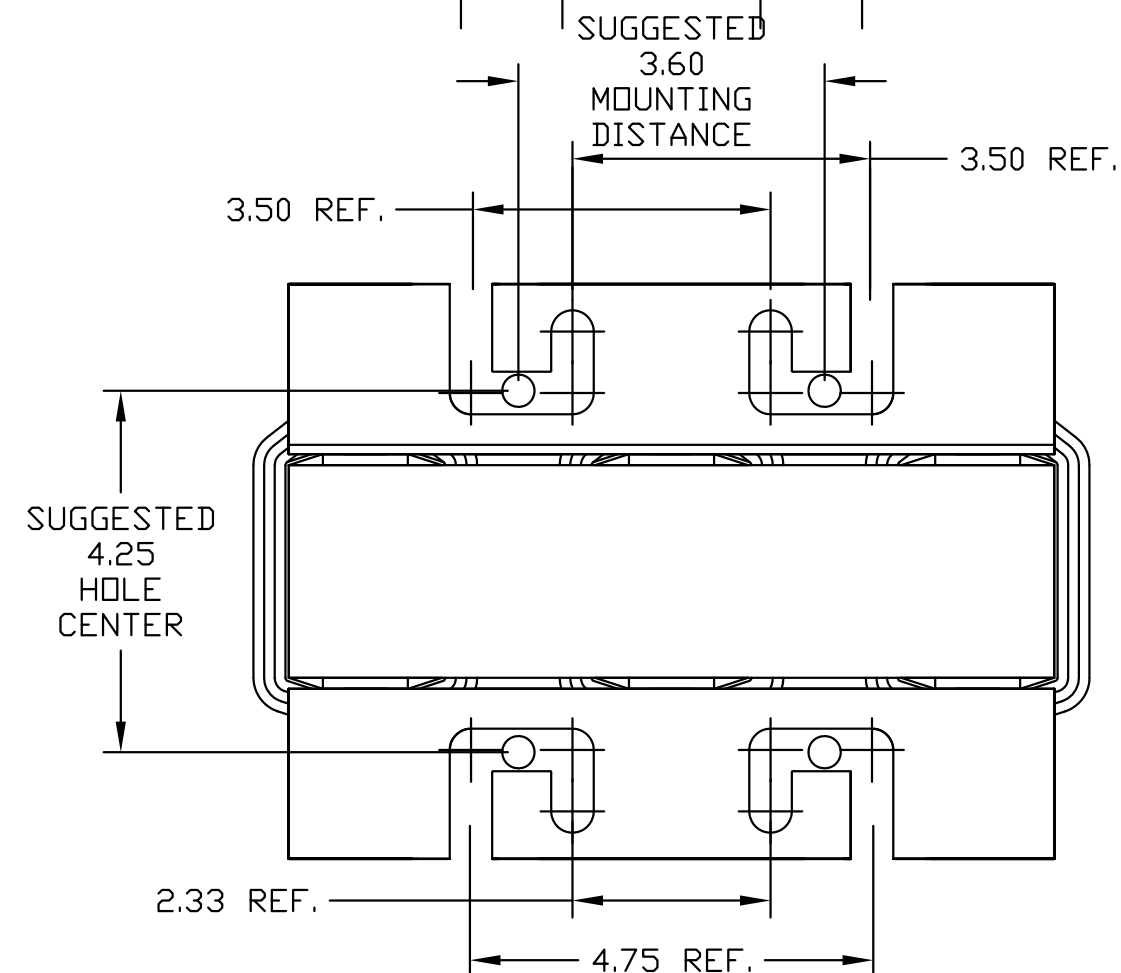
CATALOG NO	--mH $\begin{matrix} +8\% \\ -2\% \end{matrix}$	--AMPS(A)	APPROX WT-LBS
KTR15L55HG	1.59	33.3	50

	Performance and Protection for Drives.	
	TRANS-COIL, INC MILWAUKEE WI WWW.transcoil.com 800-824-8282	KTR Tuning Reactor CATALOG# _____ 3PH, 60Hz, 600V Max, --- Amps 40C Amb Max, 155C Rise

NOTE: A1, A2, B1, B2, C1, C2,
TERMINAL BLOCK
FOR REFERENCE ONLY.



TERMINAL BLOCK	
TORQUE(LB-IN)=CUSTOMER WIRE	
35	= 1 AWG THRU 4 AWG
30	= 6 AWG THRU 14 AWG
25	= 16 AWG THRU 20 AWG
20	= 22 AWG



TCI, LLC CLAIMS PROPRIETARY RIGHTS IN THE MATERIAL HEREIN DISCLOSED. IT IS SUPPLIED WITHOUT PREJUDICE TO ANY PATENT RIGHTS OF TCI AND MAY NOT BE REPRODUCED OR USED TO MANUFACTURE ANYTHING SHOWN THEREIN WITHOUT WRITTEN PERMISSION FROM TCI.

AS RELEASED	10/21/10	DSW	TOLERANCES (EXCEPT AS NOTED): DECIMAL .XX ±.03 .XXX ±.01 FRACTIONAL ± 1/32 ANGULAR ± 1/2°
NO REVISION	DATE	BY	

	W132 N10611 Grant Drive Germantown, WI 53022	
	KTR15L55HG, TRAP REACTOR 400V, 37kW.	
DRN. BY DSW	DATE 10/21/10	DWG. NO. 104489DG
SCALE TO FIT	SIZE C	SHT.1 OF 1