

|            |   |           |               |
|------------|---|-----------|---------------|
| CATALOG NO | --mH $\begin{matrix} +8\% \\ -2\% \end{matrix}$ | --AMPS(A) | APPROX WT-LBS |
| KTR15A65HG | 1.844   | 28.70     | 45            |

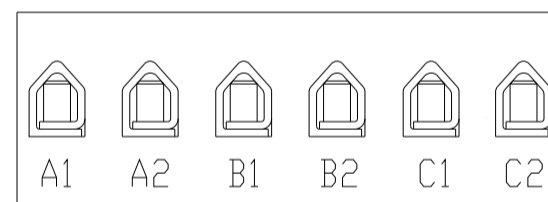
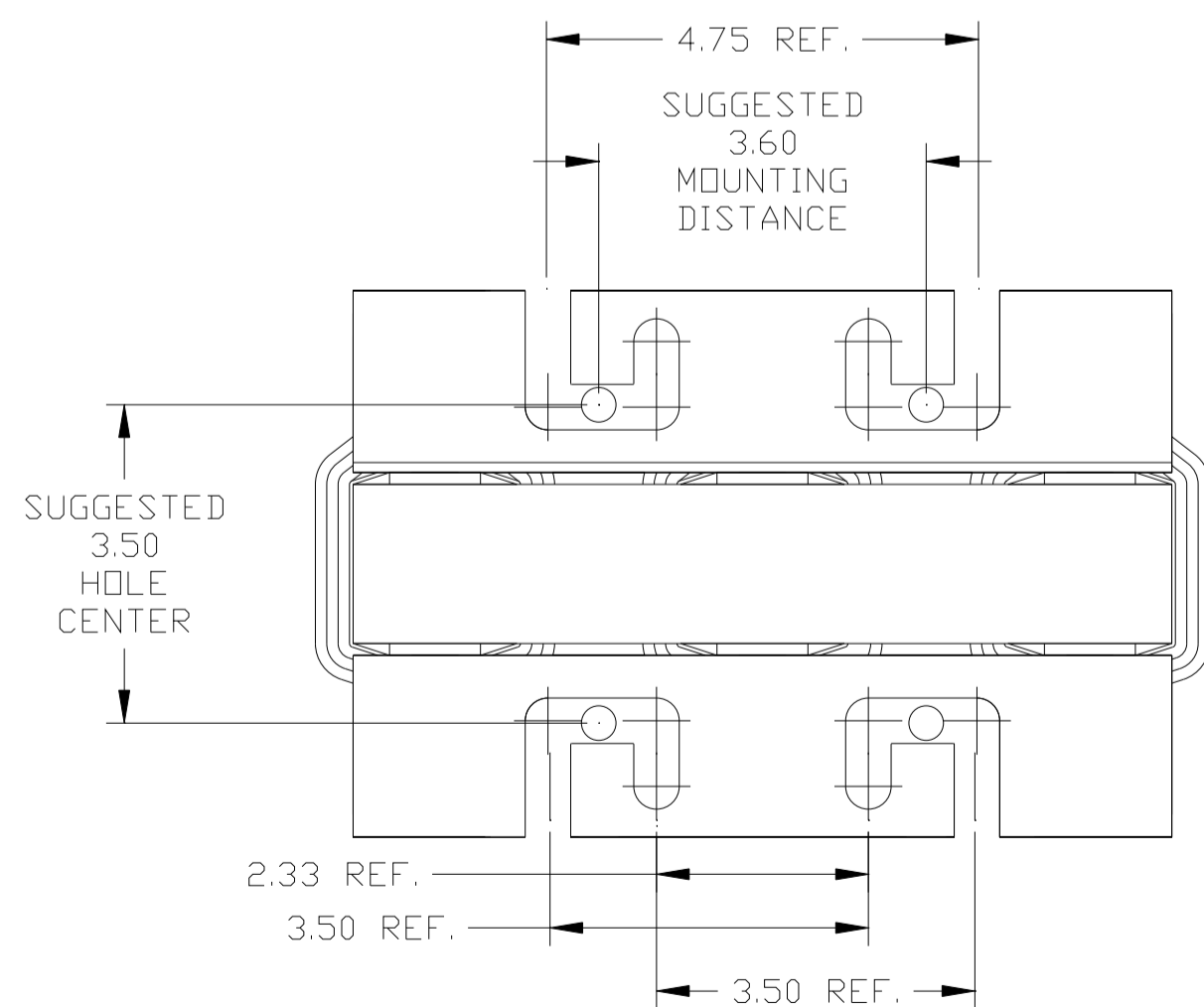
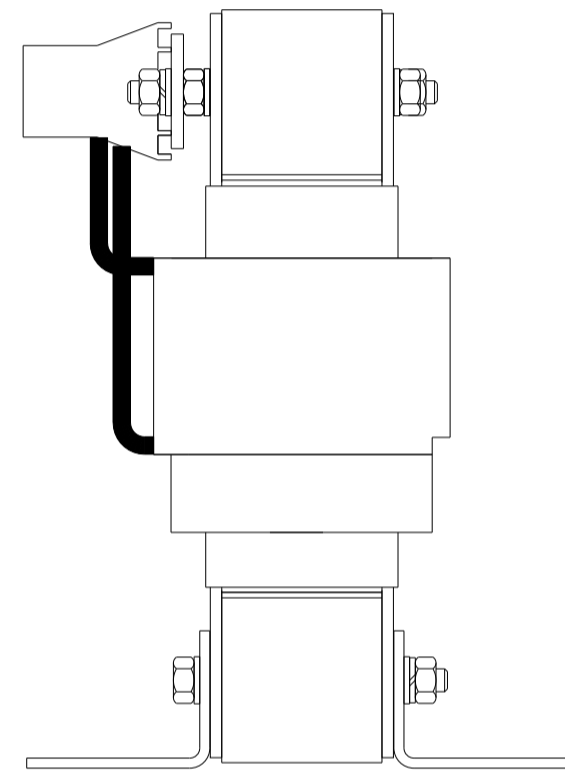
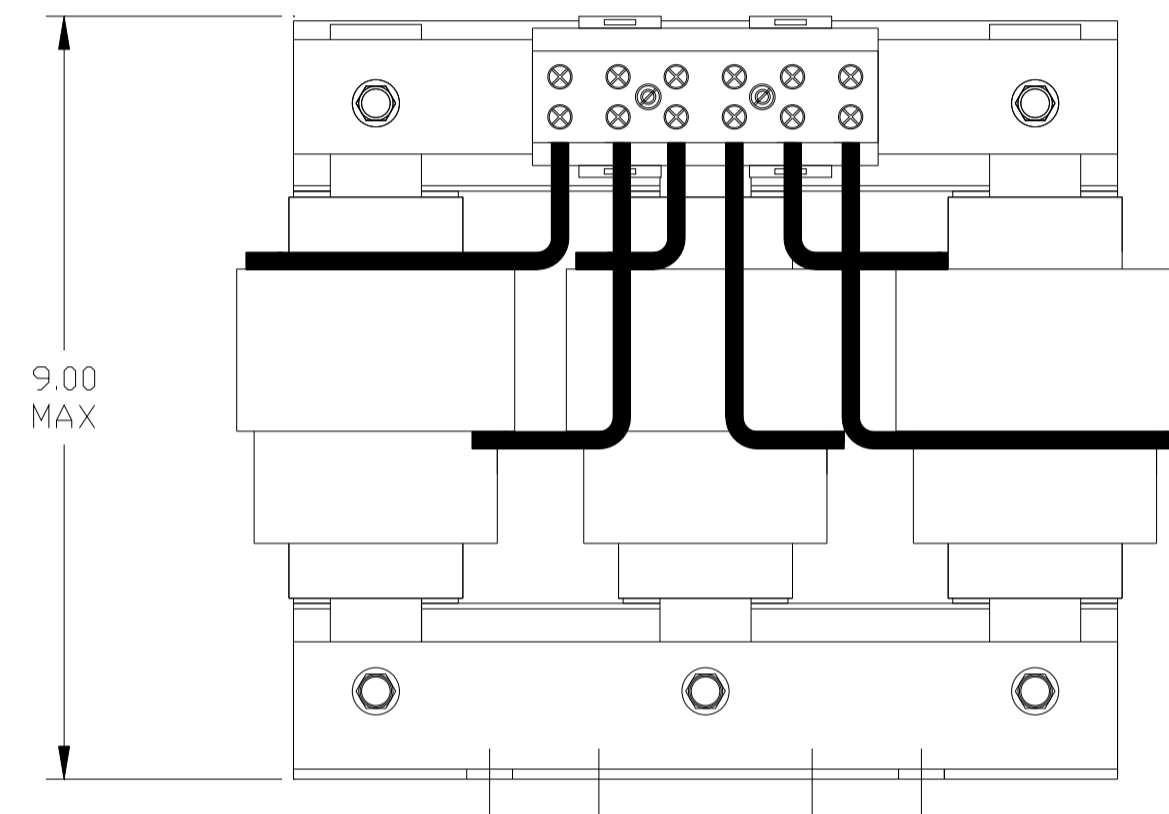
**TCI** Performance and Protection for Drives.

TRANS-COIL, INC  
MILWAUKEE WI  
WWW.transcoil.com  
800-824-8282

KTR Tuning Reactor  
CATALOG#  
3PH, 60Hz, 600V Max, --- Amps  
40C Amb Max, 155C Rise

**UL** **US** **SA** **CE**

DATE CODE A1 A2 B1 B2 C1 C2



NOTE: A1, A2, B1, B2, C1, C2, MARKINGS ON TERMINAL BLOCK FOR REFERENCE ONLY.

| TERMINAL BLOCK              |                      |
|-----------------------------|----------------------|
| TORQUE(LB-IN)=CUSTOMER WIRE |                      |
| 35                          | = 1 AWG THRU 4 AWG   |
| 30                          | = 6 AWG THRU 14 AWG  |
| 25                          | = 16 AWG THRU 20 AWG |
| 20                          | = 22 AWG             |

|                        |  |                              |     |   |  |
|------------------------|--|------------------------------|-----|---|--|
|                        |  | TOLERANCES (EXCEPT AS NOTED) |     | <b>TCI</b> 7878 N. 86th STREET<br>MILWAUKEE, WI 53224 |  |
|                        |  | DECIMAL                      |     |   |  |
|                        |  | .XX ± .03                    |     | KTR15A65HG TRAP REACTOR<br>28.70 AMPS, 480V, 40-50 HP |  |
|                        |  | .XXX ± .01                   |     |   |  |
|                        |  | FRACTIONAL                   |     | DRN BY DSW DATE 02/02/05 DWG. NO. 102294DG            |  |
|                        |  | ± 1/32                       |     |   |  |
| B 2661 ADD CE TO LABEL |  | 3/08/10                      | DSW | SCALE TO FIT  |  |
| NO REVISION            |  | DATE                         | BY  |   |  |
|                        |  | ANGULAR ± 1/2°               |     | APRVD. C  |  |